



Flat 2, Melbourne House Bacton Road, North Walsham

North Walsham

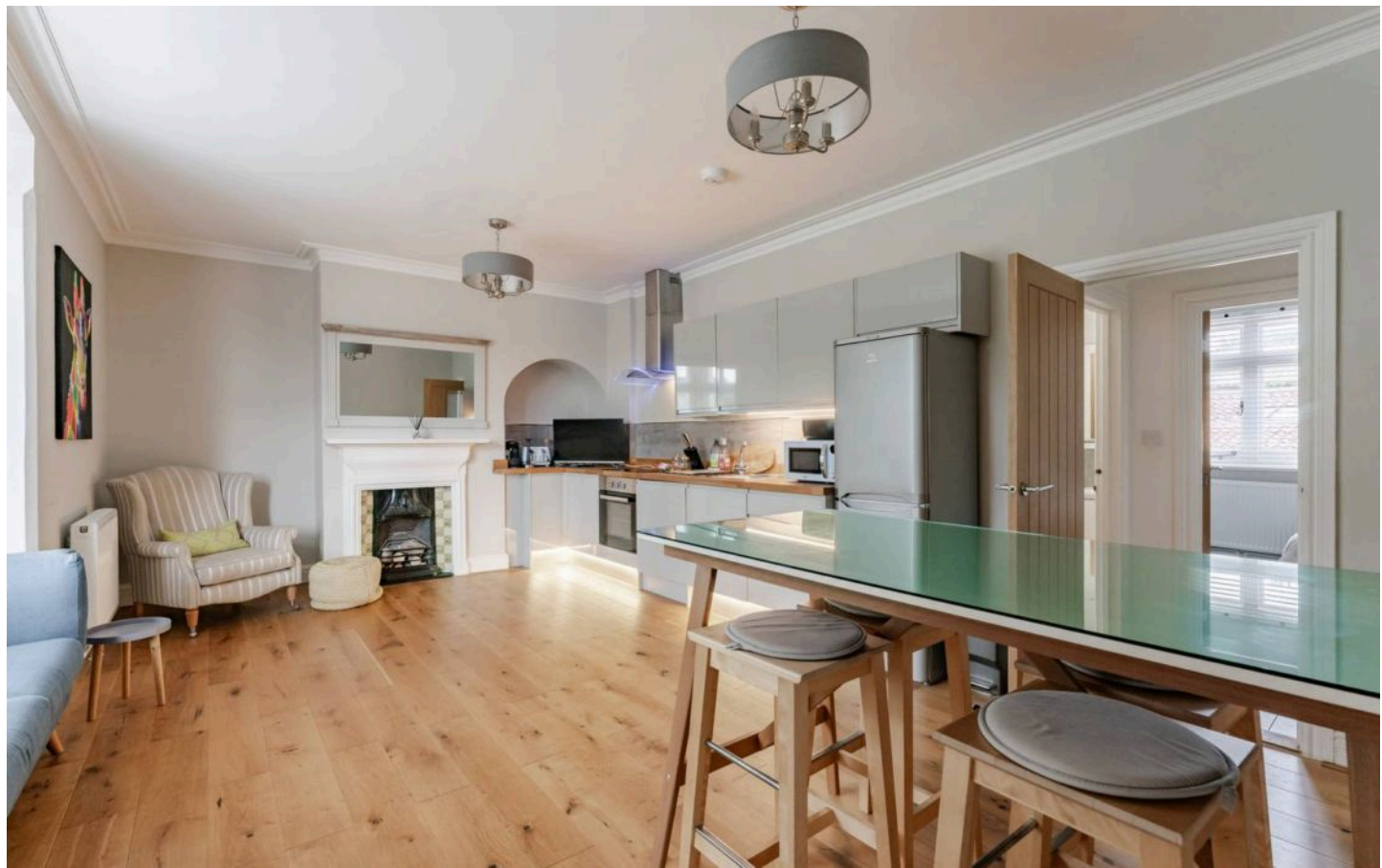


Minors & Brady

Flat 2

Melbourne House Bacton Road, North Walsham

Where period charm meets contemporary flair, this delightful North Walsham home offers a truly unique living experience. Step inside to discover an open-plan lounge and kitchen, where sleek grey gloss units and plinth lighting create a modern, inviting space, complemented by original features such as a wrought iron fireplace. Sunlight floods the living area and master bedroom through large bay windows, highlighting the warm wooden flooring and stylish interiors. The master suite benefits from its own fireplace, a dressing room, and a contemporary ensuite, while a generously sized second bedroom and modern shower room complete the accommodation. Externally, residents enjoy communal gardens and the convenience of two allocated parking spaces. With a share of the freehold, no onward chain, and furniture available by negotiation, the home is ready to move into. Perfectly positioned in a thriving market town, it offers excellent amenities, schools, transport links, and easy access to the Norfolk countryside and coast.





M&B

Flat 2

Melbourne House Bacton Road, North Walsham

The Location

The property is located in a sought-after residential area of North Walsham, a thriving market town renowned for its strong community spirit, rich heritage, and excellent amenities. The town offers a diverse range of everyday conveniences, including supermarkets, independent shops, cafés, restaurants, and a bustling weekly market, providing a real sense of local character. Leisure facilities are well catered for, with a modern leisure centre offering a gym, swimming pool, and various sports clubs, while green spaces and parks provide opportunities for outdoor activities.

Families will benefit from a choice of well-regarded primary and secondary schools, as well as nurseries and after-school clubs, making the area particularly attractive to those with children. Commuters enjoy easy access to the town's railway station, which provides direct connections to Norwich and onward links to London, while the nearby road network ensures convenient travel across Norfolk.

North Walsham is perfectly positioned for exploring the scenic Norfolk countryside, including picturesque walking and cycling routes, charming villages, and historic landmarks. Nature enthusiasts will appreciate the proximity to the Norfolk Broads, ideal for boating and wildlife spotting, while the Norfolk coastline, with its sandy beaches and quaint seaside towns, is just a short drive away.

M&B



Flat 2

Melbourne House Bacton Road, North Walsham

Melbourne House, Bacton Road, North Walsham

Step into this charming home through a welcoming entrance porch, leading into a beautifully presented open-plan lounge and kitchen. The living area retains stunning period features, including an original wrought iron fireplace, while the contemporary kitchen features sleek grey gloss units, offering a practical and stylish space for modern living. Plinth lighting in the kitchen adds an ambient glow, enhancing the overall atmosphere.

Light fills the room, highlighting the modern, contemporary interior and wooden flooring, creating an inviting and stylish environment. The living space and master bedroom both feature large bay windows, adding character and plenty of natural light.

The property includes a generously sized second bedroom, alongside a spacious master bedroom with its own original fireplace and an adjoining dressing room leading to a contemporary ensuite.

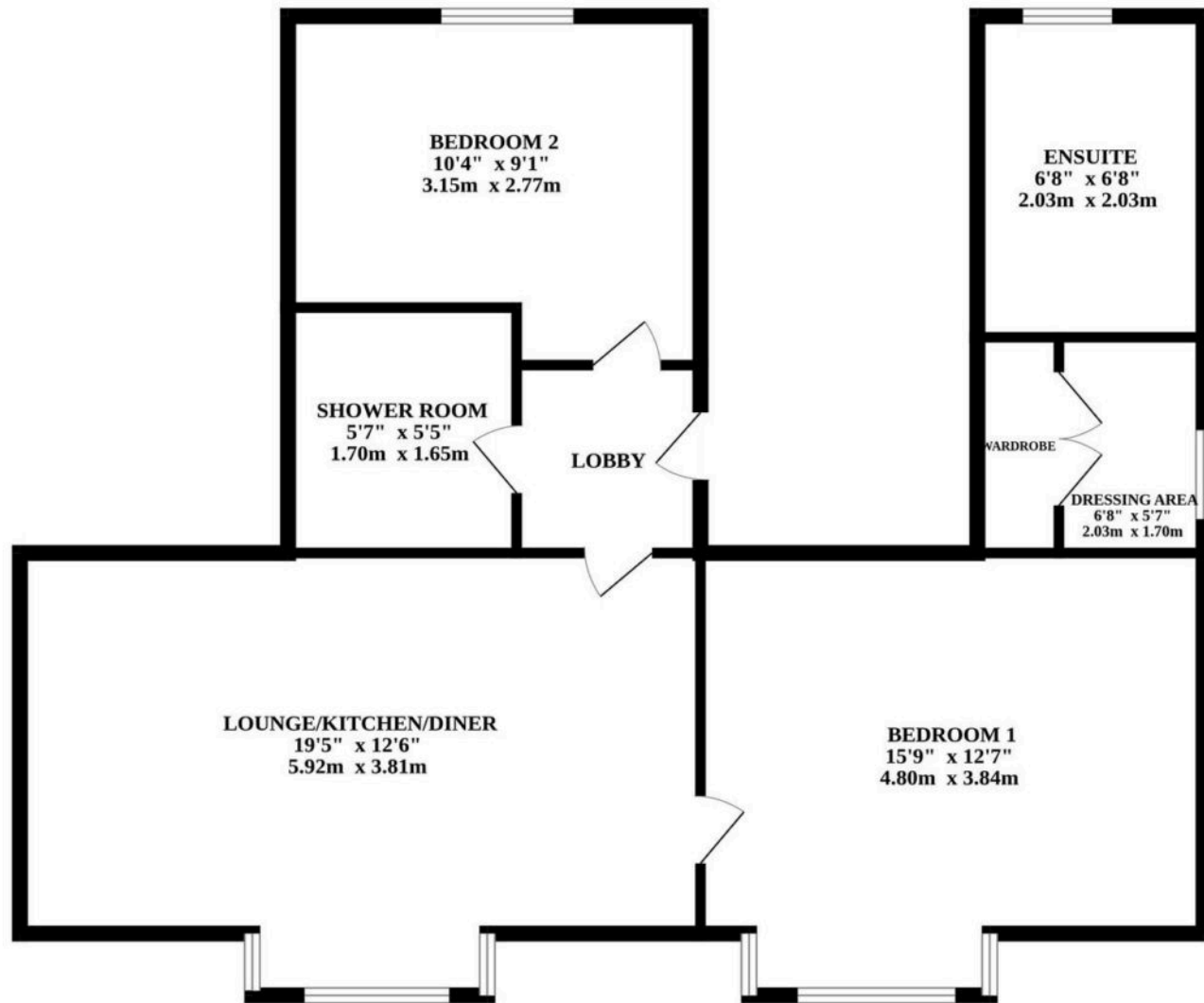
A modern shower room completes the accommodation, all finished to a high standard.

Externally, the home benefits from communal gardens and two allocated parking spaces. Offered with no onward chain, the property also includes a share of the freehold, and furniture is available by separate negotiation.

This home beautifully combines period charm with a modern, contemporary interior, offering a stylish and comfortable living environment throughout.



GROUND FLOOR



Whilst every attempt has been made to ensure the accuracy of the floorplan contained here, measurements of doors, windows, rooms and any other items are approximate and no responsibility is taken for any error, omission or mis-statement. This plan is for illustrative purposes only and should be used as such by any prospective purchaser. The services, systems and appliances shown have not been tested and no guarantee as to their operability or efficiency can be given.
Made with Metropix ©2023

Dreaming of this home? Let's make it a reality



Meet *Abi*
Branch Partner



Meet *Karol*
Property Valuer



Meet *Claire*
Aftersales Team Leader

Minors & Brady
Your home, our market



wroxham@minorsandbrady.co.uk



01603 783088



6 Church Road, Wroxham, Norwich, NR12 8UG

CAISTER-ON-SEA | DEREHAM | DISS | NORWICH | OULTON BROAD | WROXHAM



How can we support

- ✓ Residential Mortgages
- ✓ Protection & Insurance
- ✓ Buy-to-let (personal and limited company)



Matt Waters
Senior Mortgage
and Protection Advisor



Victoria Payne
Mortgage and
Protection Advisor

Scan to book your
appointment today



T: 01692 531372
E: enquiries@norfolk-mortgages.co.uk