



Glen Gowan Mount Pleasant, Reydon

In Excess of £475,000

Glen Gowan Mount Pleasant

Reydon, Southwold

This exquisite Edwardian home redefines comfortable and contemporary living, whilst containing its original period features. From the moment you step inside, you'll be immersed in its functional layout set across three floors, creating an exceptional living space for a busy family lifestyle. Sitting in the desirable village of Reydon, close to the beautiful seaside town of Southwold. In close proximity to all local amenities and natural surroundings. This residence is tailored for families seeking both tranquillity and convenience.

LOCATION

Reydon is a quiet village situated just outside the stunning seaside town of Southwold. It benefits from several amenities including schools, shops, a pub, a doctors surgery, the village hall and much more within a short walking distance. Reydon Primary School and Saint Felix School are within easy reach and provide education for ages 2-18. 1 mile from Reydon, you will find Southwold with its iconic high street, colourful beach huts and striking lighthouse. Southwold offers a range of restaurants, shops, hotels, supermarkets and more.

AGENTS NOTES

We understand that this property is freehold. Connected to mains water, electricity, gas and drainage.

Heating system - Gas boiler.

Council Tax Band: B





Glen Gowan Mount Pleasant

Reydon, Southwold

Upon arrival is a beautiful first impression to this exceptional end-terrace home, which continues to impress throughout. There is on road parking available for all family members and visitors. Whilst gated access leads you into the small front garden, with a pathway to your entrance door.

Step inside where you are instantly greeted by a welcoming entrance hall, leading you from the outside world into the sanctum of the home. Positioned at the front of the property is a pleasant sitting room is where you can showcase your most comfortable furniture and decorative items. With the presence of a open fireplace, creating a warm and cosy ambiance. The dining room is perfect for your casual gatherings with friends and family.

At the heart of the home lies a kitchen/breakfast room, well-equipped with newly fitted units and appliances, to be able to cook your favourite meals. Complemented by a sun room, for your additional seating arrangements, framing views of the rear garden.





Glen Gowan Mount Pleasant

Reydon, Southwold

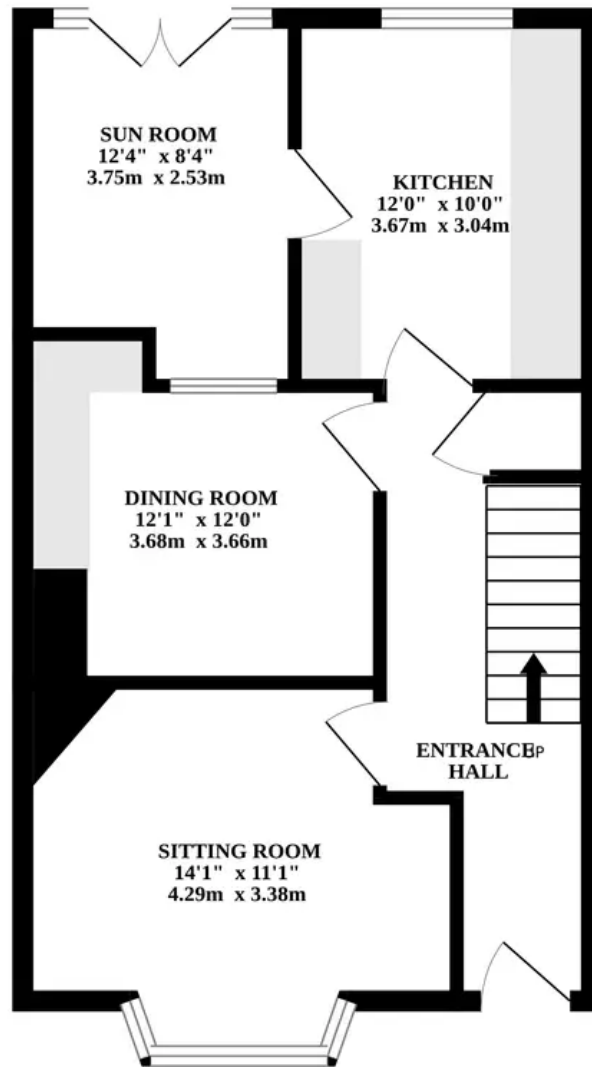
Heading upstairs you will find three bedrooms, meticulously designed to offer you relaxation and privacy. The large bathroom comprises of a four piece suite, accommodating all family members and guests. Additionally, the master bedroom is located on the second floor, completed with its own ensuite for added convenience. Benefiting from stunning distant views of Southwold Pier and the coast.

Towards the rear is a well maintained south-facing garden, primarily laid to lawn, with a patio area creating a wonderful space for your outdoor furniture. The wooden shed is ideal for storing your garden equipment. Overall this garden is fully enclosed so you can enjoy in seclusion.

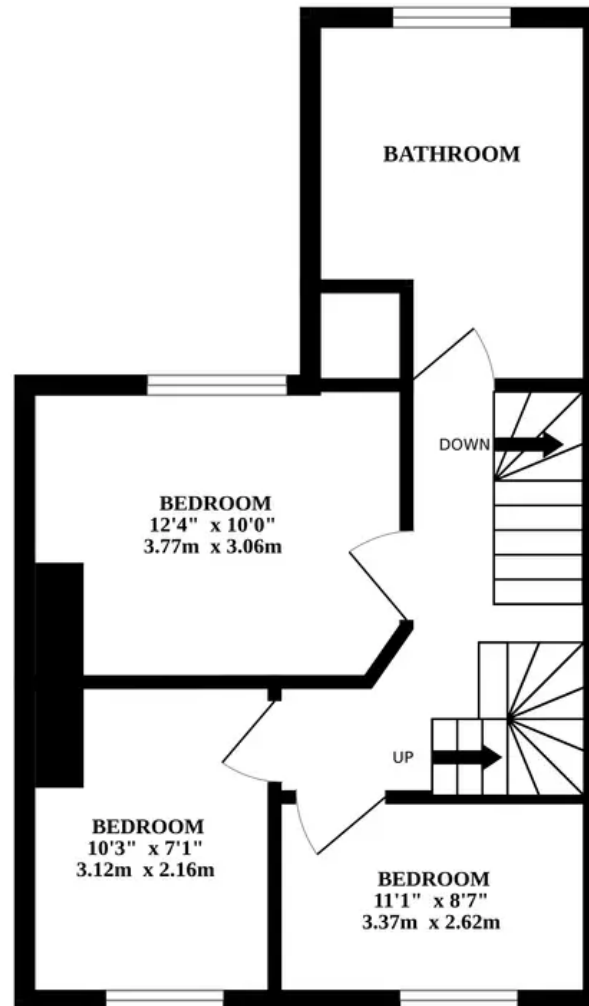
- BEAUTIFUL END-TERRACE HOME
- CLOSE PROXIMITY TO THE SEASIDE TOWN OF SOUTHWOLD
- PLEASANT SITTING ROOM & DINING ROOM
- NEWLY FITTED KITCHEN/BREAKFAST ROOM
- SUN ROOM WITH VIEWS OF THE GARDEN
- FOUR BEDROOMS ACROSS TWO FLOORS
- LARGE FOUR PIECE SUITE BATHROOM
- MASTER BEDROOM - WITH ENSUITE & VIEWS OF SOUTHWOLD PIER
- WELL MAINTAINED GARDEN & ON ROAD PARKING
- IN CLOSE PROXIMITY TO ALL LOCAL AMENITIES AND NATURAL SURROUNDINGS



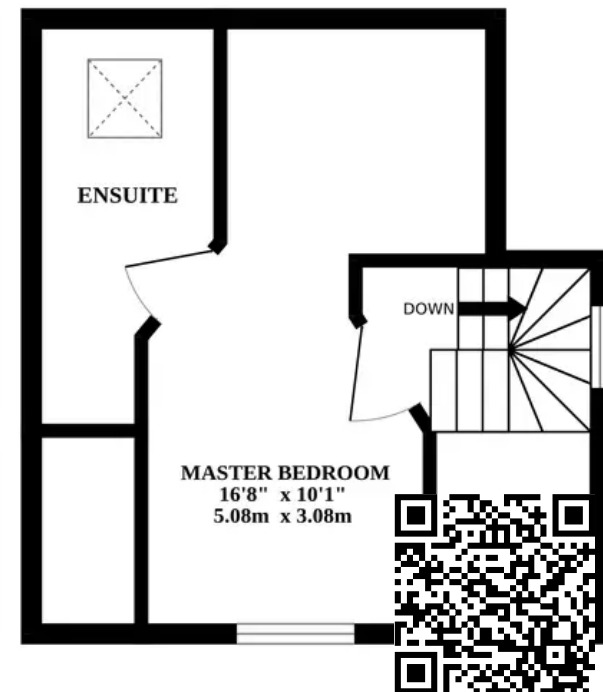
GROUND FLOOR



1ST FLOOR



2ND FLOOR



Whilst every attempt has been made to ensure the accuracy of the floorplan contained here, measurements of doors, windows, rooms and any other items are approximate and no responsibility is taken for any error, omission or mis-statement. This plan is for illustrative purposes only and should be used as such by any prospective purchaser. The services, systems and appliances shown have not been tested and no guarantee as to their operability or efficiency can be given.

Made with Metropix ©2024