



3 Admirals Garden, Hingham

Norwich



Minors & Brady



### 3 Admirals Garden

Between the privacy of four homes and the promise of family life, this residence balances poise with warmth. Where presence and grace intertwine, a home of rare distinction emerges in Admirals Garden. This commanding red brick residence occupies a discreet cul-de-sac, offering privacy. The approach, marked by brick pillars and a subtle signpost, hints at the refined character within. A deep blue front door, framed by landscaped gardens and a sweeping gravel driveway, sets the tone for understated grandeur. Inside, flowing spaces connect a sitting room with a distinguished fireplace to a dedicated dining room, while a generously proportioned kitchen combines rustic charm with modern practicality. Four serene bedrooms, including a master with a dual-basin en-suite, ensure comfort and calm throughout the upper floor. Outside, a terraced seating area, manicured lawn, and curated plantings create a private haven for relaxation and entertaining. Admirals Garden is not merely a location; it is a sanctuary of style, tranquility, and enduring family living.

- Red brick façade conveying presence and understated charm within a private cul-de-sac
- Exclusive enclave setting providing privacy and a peaceful family environment
- Gravel driveway leading to a double garage, combining convenience with a sense of space
- Entrance porch and hall offering a welcoming introduction to the home
- Characterful sitting room with a distinguished fireplace and soft, elegant tones
- Flowing reception spaces connecting living and dining areas with ease
- Spacious kitchen blending rustic warmth with modern integrated appliances, including a wine fridge
- Master suite with dual-basin en-suite, providing both comfort and practical luxury







M&B

# 3 Admirals Garden

Hingham, Norwich

## The Location

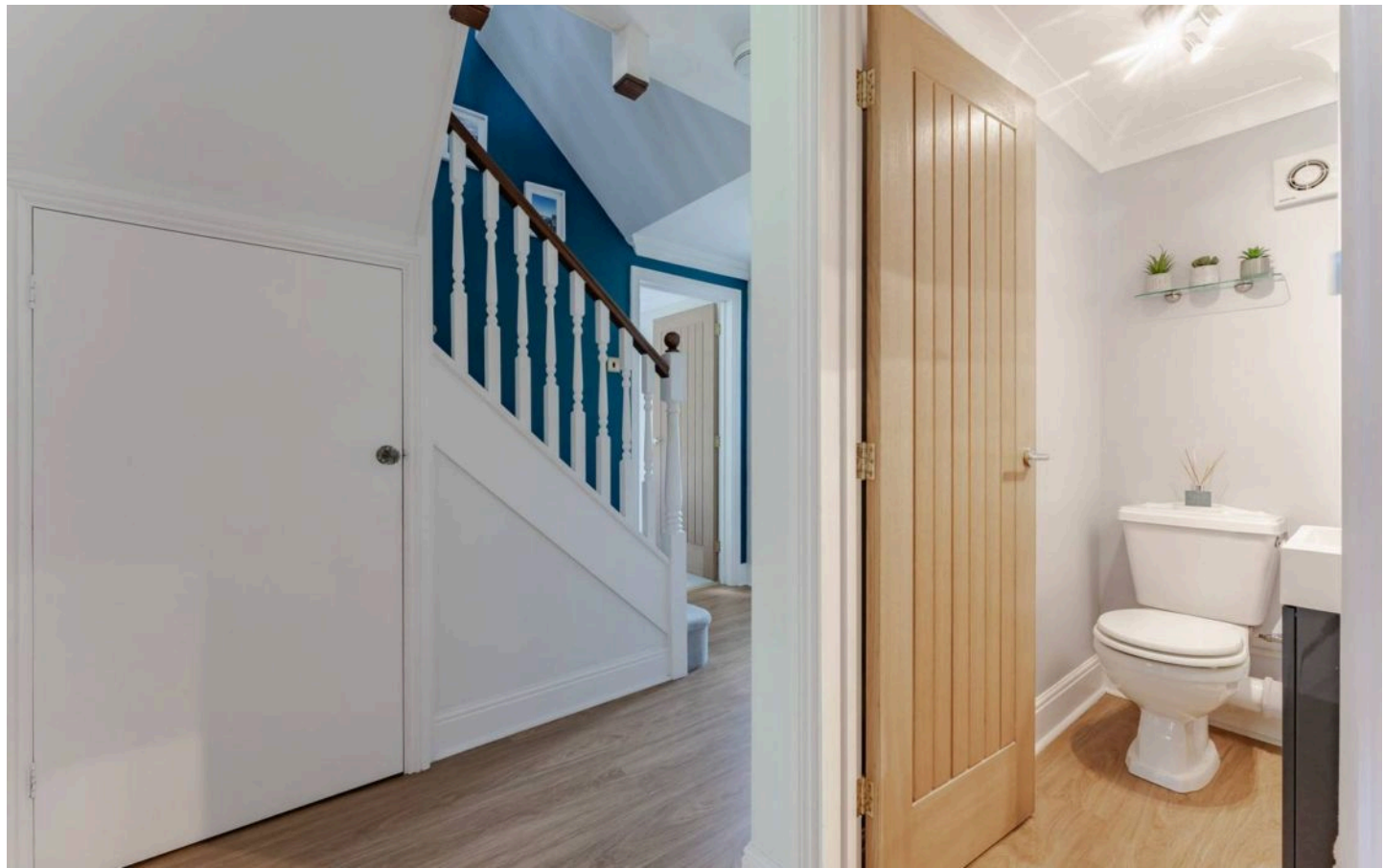
Step outside into the unique charm of one of Norfolk's most desirable market towns. Located within a designated Conservation Area, the elegant facades, together with the magnificent mediaeval church, create a setting that is as timeless as it is vibrant, each building redolent of centuries past yet very much alive today.

The heart of the town is its bustling market place, with an excellent range of local traders including a baker, butcher, chemist, art galleries, antiques, and more. Cafés invite you to pause and savour the slow pleasures of the day, or enjoy a meal in the White Hart pub. The Co-op supermarket is just down the road.

The town offers a primary school, an excellent health centre, a flourishing sports centre with tennis courts, a skate park, and football and cricket pitches. Two children's play areas, a dentist, hairdressers, and a variety of skilled tradespeople, from joiners to gardeners, complete the practical conveniences of daily life.

Life here strikes a perfect balance between the cosmopolitan and the countryside. You might spend the day dining on locally sourced cuisine or enjoying seasonal festivals celebrating the town's rich artistic heritage. Just beyond the town, the landscape softens into the gentle sweep of Norfolk's rolling countryside, with easy access to Norwich, one of England's finest cities. Connections are excellent, with a twenty-minute drive to Norwich, frequent bus services, and easy access to the A11 and rail links to Cambridge, Stansted, and London. Here, every day feels inspiring and full of possibility.

M&B





### 3 Admirals Garden

Hingham, Norwich

#### Admirals Gardens, Hingham

Some homes possess presence. Others possess personality. This commanding red brick residence in Admirals Garden has both – and more. Tucked within a small, owner-occupied cul-de-sac of just four detached homes, it offers a rare combination of privacy, elegance and timeless family living. The approach is marked by brick pillars and a subtle signpost proclaiming “Admirals Gardens,” announcing the entrance to this discreet enclave.

The home itself stands with quiet authority, its rich red brick façade framed by meticulously landscaped front gardens, while a deep blue front door, adorned with a delicate autumnal wreath, sets the tone for the charm and refinement found within.

A sweeping gravel driveway leads to a generous double garage, blending practicality with a sense of grandeur.

Step inside and the home begins to tell its story. An entrance porch provides a gentle pause from the outside world, allowing shoes and outerwear to be discreetly stowed. Beyond, the entrance hallway unfolds with a staircase ascending gracefully to the upper floor and a thoughtfully designed WC featuring modern sanitaryware and subtle varietal tiling above the sink.



M&B



## 3 Admirals Garden

Hingham, Norwich

To one side, the sitting room exudes character and comfort, anchored by a distinguished fireplace and adorned in soft pink tones that whisper sophistication. Sliding doors open onto the rear garden, while a wide opening leads effortlessly into the dedicated dining room, ensuring the flow of spaces is effortless, warm, and inviting.

The kitchen is a study in both form and function, generously proportioned and filled with storage, including a wine fridge and integrated appliances. Its rustic, countryside-inspired ambience makes it both practical and charming. The adjoining utility room provides space for laundry appliances and rear access to the garden, quietly balancing utility with convenience. Upstairs, four well-appointed bedrooms radiate calm and refinement.

The master suite is complemented by an en-suite shower room with dual his-and-hers basins, while the remaining rooms are served by a sophisticated three-piece bathroom suite, marrying contemporary design with enduring appeal.

Outside, the garden is a private haven. A terraced seating area invites al fresco entertaining, while a manicured lawn, bordered with shrubs and a curated array of potted plants, offers bursts of seasonal color. Discreet access to the double garage completes the picture of a home that is at once practical, elegant, and serene.

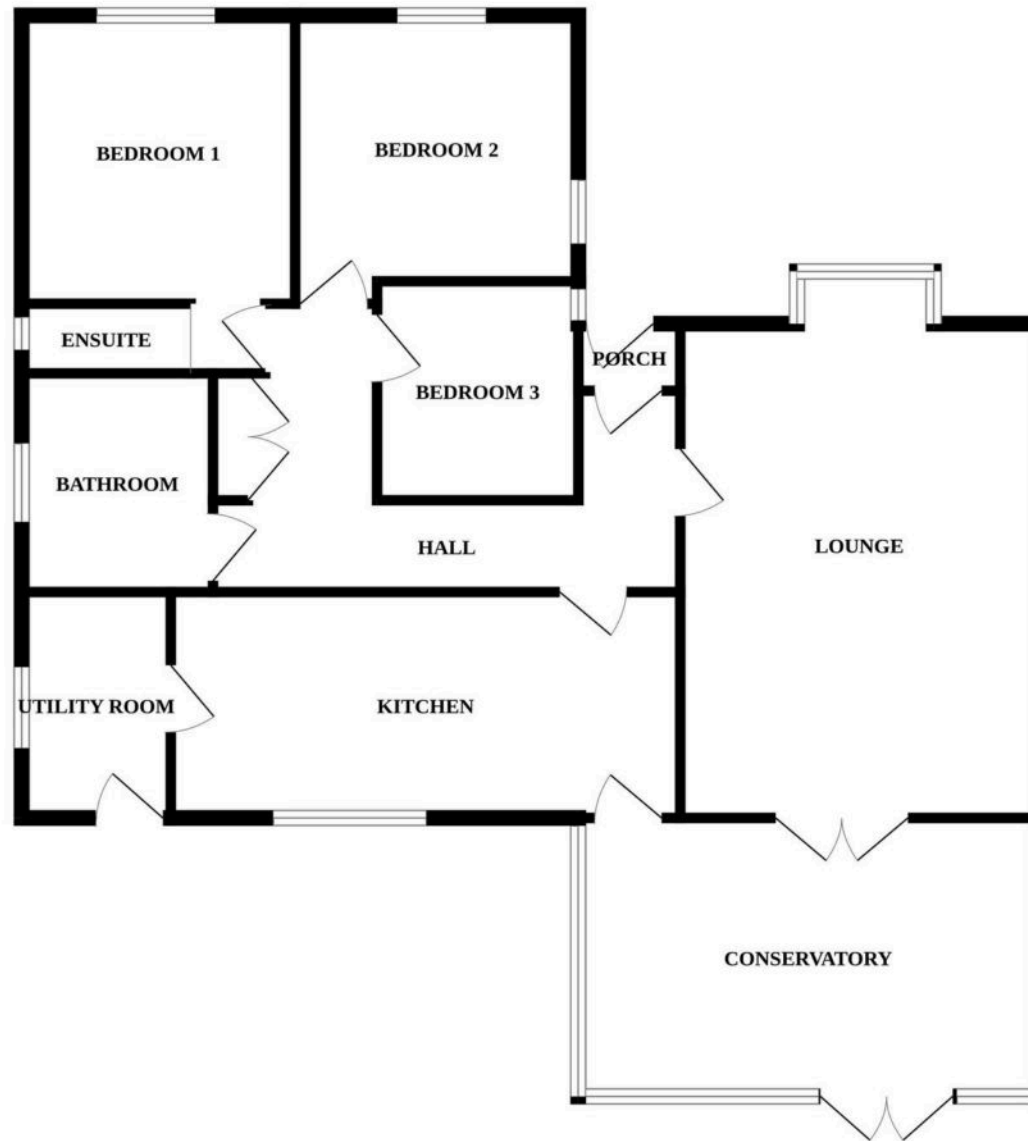
Admirals Garden is more than a location; it is a private enclave where tranquility, style, and connection converge. To own this home is not simply to purchase property – it is to become part of a setting that promises enduring comfort, refined living, and the quiet joy of a truly special place tucked away from the bustle of everyday life.



M&B



## GROUND FLOOR



Whilst every attempt has been made to ensure the accuracy of the floorplan contained here, measurements of doors, windows, rooms and any other items are approximate and no responsibility is taken for any error, omission or mis-statement. This plan is for illustrative purposes only and should be used as such by any prospective purchaser. The services, systems and appliances shown have not been tested and no guarantee as to their operability or efficiency can be given.  
Made with Metropix ©2023

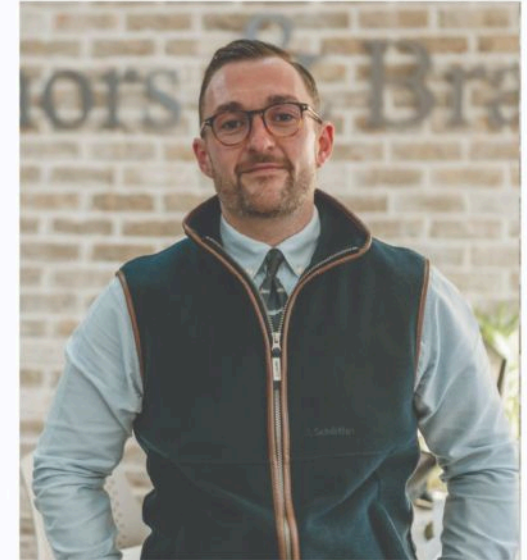
# Dreaming of this home? Let's make it a reality



Meet *Callum*  
Senior Property Consultant



Meet *Aysegul*  
Aftersales Progressor



Meet *Curtis*  
Listings Director

Minors & Brady  
*Your home, our market*



dereham@minorsandbrady.co.uk



01362 700820



9a Market Place, Dereham, NR19 2AW

CAISTER-ON-SEA | DEREHAM | DISS | NORWICH | OULTON BROAD | WROXHAM





## How can we support

- ✓ Residential Mortgages
- ✓ Protection & Insurance
- ✓ Buy-to-let (personal and limited company)



**Matt Waters**  
Senior Mortgage  
and Protection Advisor



**Victoria Payne**  
Mortgage and  
Protection Advisor

Scan to book your  
appointment today



T: 01692 531372  
E: [enquiries@norfolk-mortgages.co.uk](mailto:enquiries@norfolk-mortgages.co.uk)