



92 Kingfisher Court, Wild Duck Holiday Park, Howards Common

Great Yarmouth



Minors & Brady

92 Kingfisher Court, Wild Duck Holiday Park

Howards Common, Great Yarmouth

This attractive park home on Norfolk's Wild Duck Holiday Park offers a serene woodland setting, perfect for relaxing weekends or a holiday let. Just a short stroll from the River Waveney, it's an ideal base for scenic walks and enjoying the countryside. The property features an open-plan kitchen, dining, and living area, three bedrooms, a shower room, and a separate WC. With excellent on-site amenities—including heated pools, a bar, restaurant, entertainment venue, and outdoor activities, plus a private outdoor seating area, it provides a perfect balance of comfort, leisure, and natural beauty.

- Park home situated on the esteemed Wild Duck Holiday Park in Norfolk
- Quiet, woodland setting that is perfect for a holiday let or a holiday home for weekends away
- Moments away from the River Waveney, an ideal spot for scenic walks
- Fantastic on-site facilities including heated indoor/outdoor pools, an entertainment venue, a bar, restaurant and outdoor activities
- Open-plan kitchen/dining/living room, creating an effortless flow for relaxation and entertaining
- Kitchen is fitted with quality cabinetry, an integrated oven, a microwave and a fridge/freezer
- Three bedrooms, a shower room and a WC
- Private outdoor area for seating arrangements



M&B



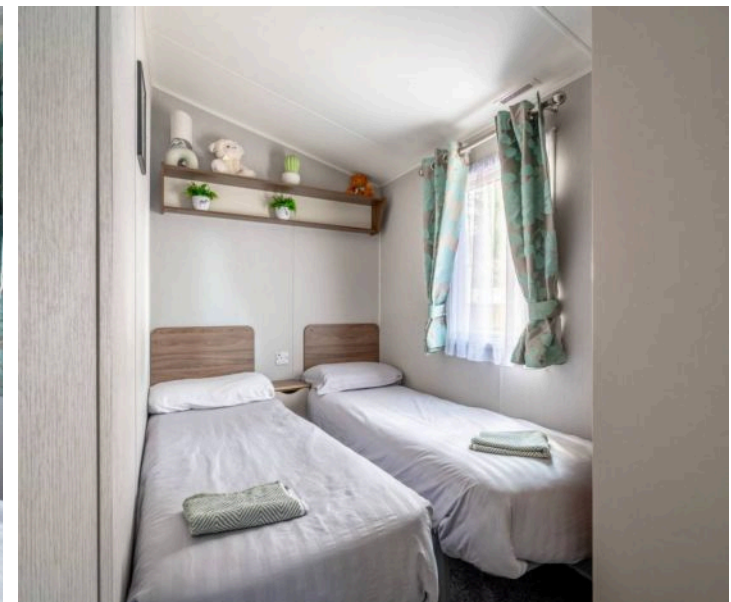
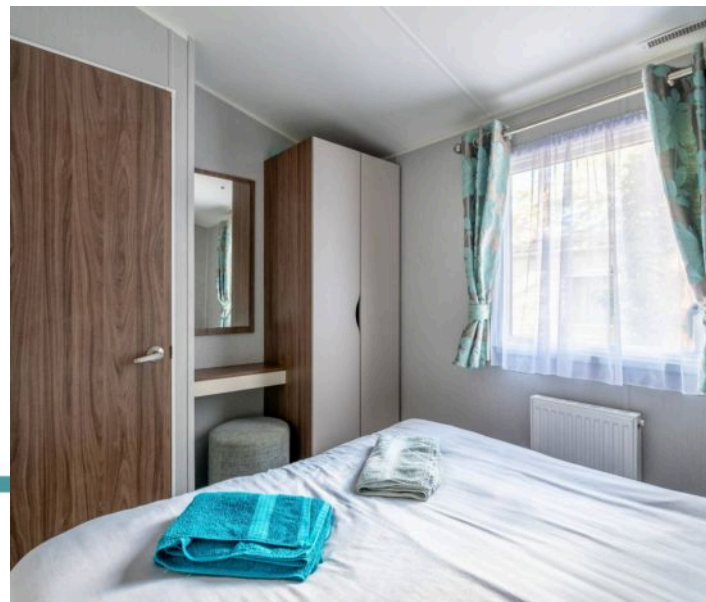
M&B

92 Kingfisher Court, Wild Duck Holiday Park

Howards Common, Great Yarmouth

Location

Wild Duck Holiday Park is situated in the peaceful village of Belton, just a few miles west of Great Yarmouth in Norfolk. Located amidst mature woodland, lakes, and meadows, the park offers a tranquil retreat while remaining within easy reach of local amenities. The park is approximately 5 miles from the sandy beaches of Great Yarmouth and around 4 miles from the quieter, family-friendly Gorleston Beach, making it convenient for both seaside excursions and leisurely coastal walks. Nearby, the village of Belton provides small local shops, pubs, and takeaways, while larger supermarkets and retail options are just a short drive away in Great Yarmouth. Local landmarks and attractions include the historic Great Yarmouth Pier, the scenic Norfolk Broads, and family-friendly destinations like BeWILDerwood. The park's location combines the serenity of woodland surroundings with convenient access to the coast, local villages, and natural attractions, offering a versatile base for both relaxation and exploration.



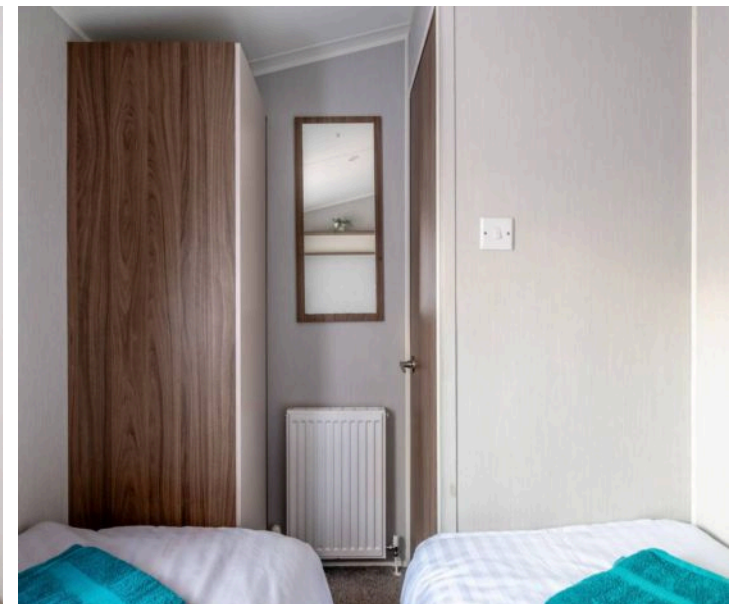
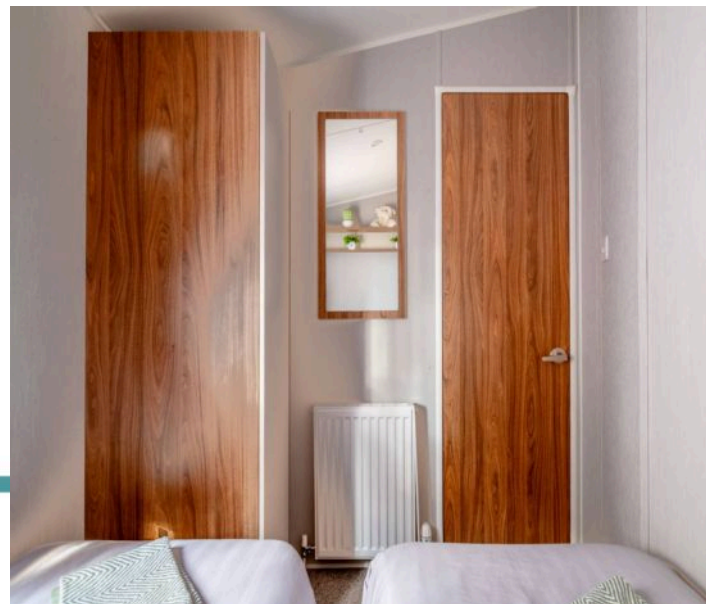
92 Kingfisher Court, Wild Duck Holiday Park

Howards Common, Great Yarmouth

Positioned within the highly regarded Wild Duck Holiday Park in Norfolk, this park home offers an inviting retreat in a quiet woodland setting. Surrounded by mature trees and the soothing sounds of nature, it's the perfect escape for weekend getaways or a lucrative holiday let. The nearby River Waveney provides picturesque walking paths, ideal for leisurely strolls and peaceful moments by the water.

Life here is designed for both relaxation and recreation. The park boasts a wealth of facilities, including heated indoor and outdoor swimming pools, an entertainment venue for lively evenings, and a welcoming bar and restaurant. Outdoor activities are plentiful, ensuring something for every age and interest, whether you're seeking adventure or simple downtime.

Inside, the home features an open-plan kitchen, dining, and living area that flows effortlessly for entertaining family and friends. The kitchen is well-appointed with quality cabinetry, an integrated oven, microwave, and fridge/freezer, making it as practical as it is stylish. Three comfortable bedrooms provide restful accommodation, complemented by a modern shower room and a separate WC for added convenience.



M&B

92 Kingfisher Court, Wild Duck Holiday Park

Howards Common, Great Yarmouth

Step outside to a private seating area, perfect for morning coffees, alfresco dining, or unwinding with a good book while soaking in the serene woodland atmosphere. Whether as a personal sanctuary or an attractive holiday rental, this park home captures the essence of a relaxed Norfolk lifestyle, blending natural beauty with exceptional on-site amenities.

Agents note

Leasehold

Ground rent - £600 p/a

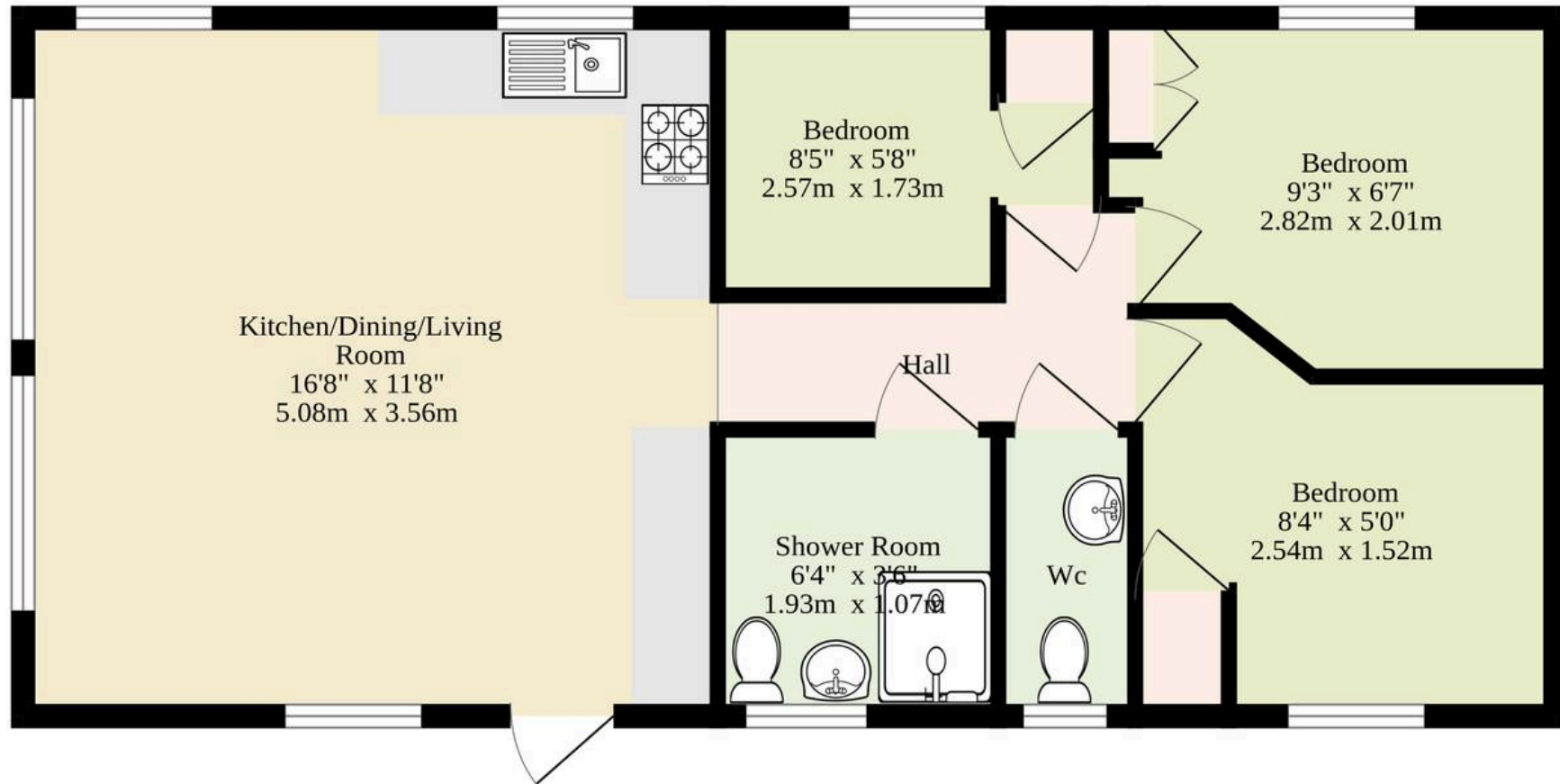
Maintenance fee - £500 p/a

Two allocated parking spaces



M&B

Ground Floor
428 sq.ft. (39.8 sq.m.) approx.



TOTAL FLOOR AREA : 428 sq.ft. (39.8 sq.m.) approx.

Whilst every attempt has been made to ensure the accuracy of the floorplan contained here, measurements of doors, windows, rooms and any other items are approximate and no responsibility is taken for any error, omission or mis-statement. This plan is for illustrative purposes only and should be used as such by any prospective purchaser. The services, systems and appliances shown have not been tested and no guarantee as to their operability or efficiency can be given.
Made with Metropix ©2025

Dreaming of this home? Let's make it a reality



Meet Sarah
Senior Property Consultant



Meet James
Property Consultant



Meet Lauren
Property Consultant

Minors & Brady
Your home, our market

 caister@minorsandbrady.co.uk

 01493 806188

 48 High Street, Caister-on-Sea, Great Yarmouth, NR30 5EH

CAISTER-ON-SEA | DEREHAM | DISS | NORWICH | OULTON BROAD | WROXHAM



How can we support

- ✓ Residential Mortgages
- ✓ Protection & Insurance
- ✓ Buy-to-let (personal and limited company)



Matt Waters
Senior Mortgage
and Protection Advisor



Victoria Payne
Mortgage and
Protection Advisor

Scan to book your
appointment today



T: 01692 531372
E: enquiries@norfolk-mortgages.co.uk