



Minors & Brady
CAISTER-ON-SEA
FOR SALE
01493 806188

THE LOKE

Jubilee House The Loke, Winterton-On-Sea

Great Yarmouth

Minors & Brady

Jubilee House The Loke

Winterton-On-Sea, Great Yarmouth

A stunning, fully refurbished Victorian cottage in the heart of Winterton On Sea, just moments from the beach, offering the perfect blend of character and modern comfort. Beautifully presented and ready to enjoy, this home has already been successfully set up as a holiday let, making it an enticing opportunity for coastal living or investment. With four generous bedrooms, versatile living spaces, and a sunny courtyard designed for al-fresco relaxation, every detail has been carefully considered to create a welcoming and stylish retreat. Step inside and discover a home that effortlessly combines charm, practicality, and the irresistible allure of seaside life.



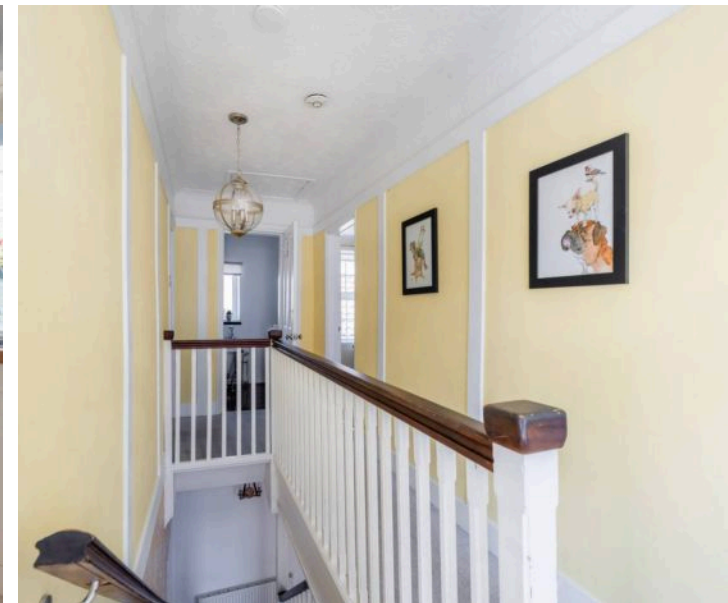


M&B

Jubilee House The Loke

Winterton-On-Sea, Great Yarmouth

- A stunning, fully refurbished Victorian cottage, moments away from the scenic coast in the village of Winterton On Sea
- Beautifully presented and ready to enjoy, with the property already successfully set up as a holiday let, ideal for investment or personal coastal living
- Inviting façade featuring symmetrical sash windows, a pitched porch, and a colourful front door, framed by a quaint pathway and established flower beds
- Four generous double bedrooms upstairs with abundant natural light from large sash windows, three with built-in storage cupboards, complemented by a modern four-piece bathroom
- Comfortable sitting room enhanced by a fireplace with an inset wood burner, providing a warm and welcoming focal point for relaxing evenings
- Cosy snug with an electric fire, offering a versatile space suitable as a home office, playroom, or additional accommodation if required
- Well-proportioned dining room at the rear of the home, perfect for intimate family meals or entertaining guests
- Fully equipped kitchen with quality cabinetry, integrated oven, space for a fridge/freezer, and a large storage cupboard
- Ground floor modern shower room comprising a three-piece suite, conveniently located for everyday living
- Courtyard garden with botanical planting, a patio area for al-fresco dining or sunbathing, and a timber storage shed for added utility



M&B

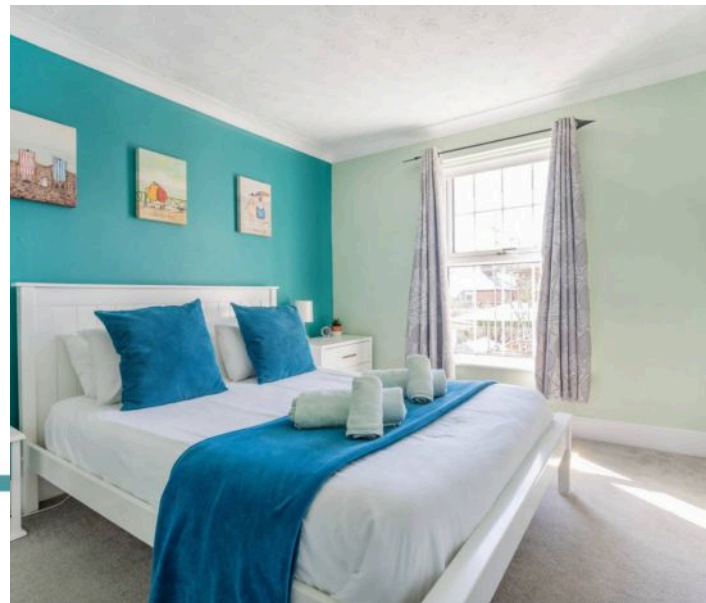
Jubilee House The Loke

Winterton-On-Sea, Great Yarmouth

Location

The Loke is situated in the picturesque coastal village of Winterton-on-Sea, a tranquil community known for its sandy beaches and natural beauty. Within walking distance, residents enjoy access to a small selection of local shops, including a convenience store, a post office, and a café that serves as a social hub for the village. Families benefit from nearby Winterton Primary School, offering education for children up to age 11, while older students travel to schools in neighbouring towns.

Healthcare needs are met by the village's medical practice, complemented by pharmacies and nearby clinics in the surrounding area. Despite its peaceful setting, Winterton-on-Sea maintains strong transport connections: the village is accessible via local bus services that link it to Great Yarmouth and other coastal towns, while the nearby road network provides convenient routes to Norwich and the wider Norfolk region. This combination of village charm, essential amenities, and easy connectivity makes The Loke an ideal location for those seeking a serene coastal lifestyle.



M&B

Jubilee House The Loke

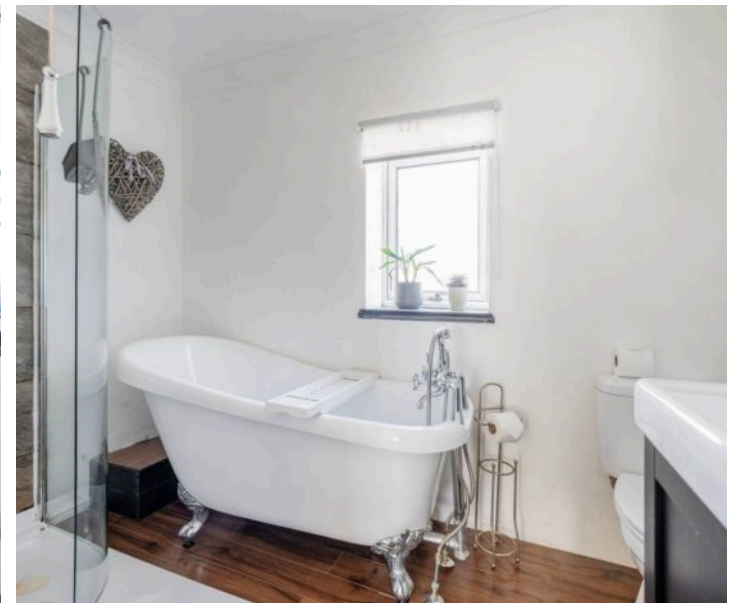
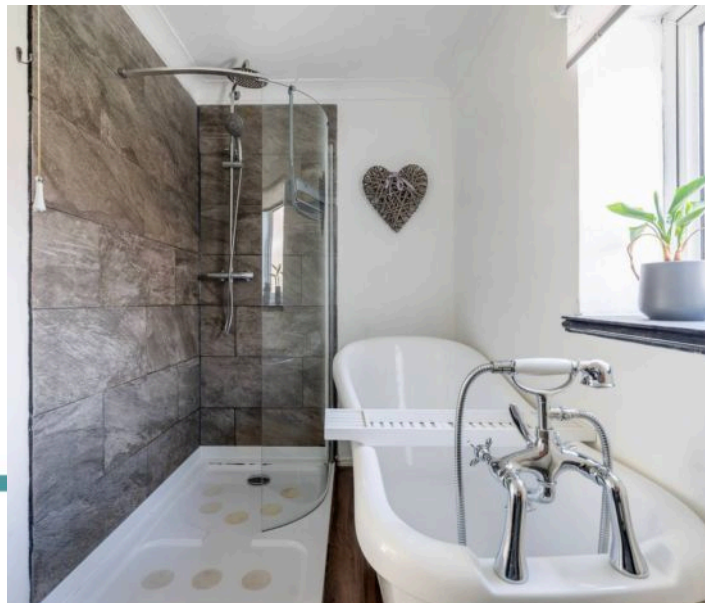
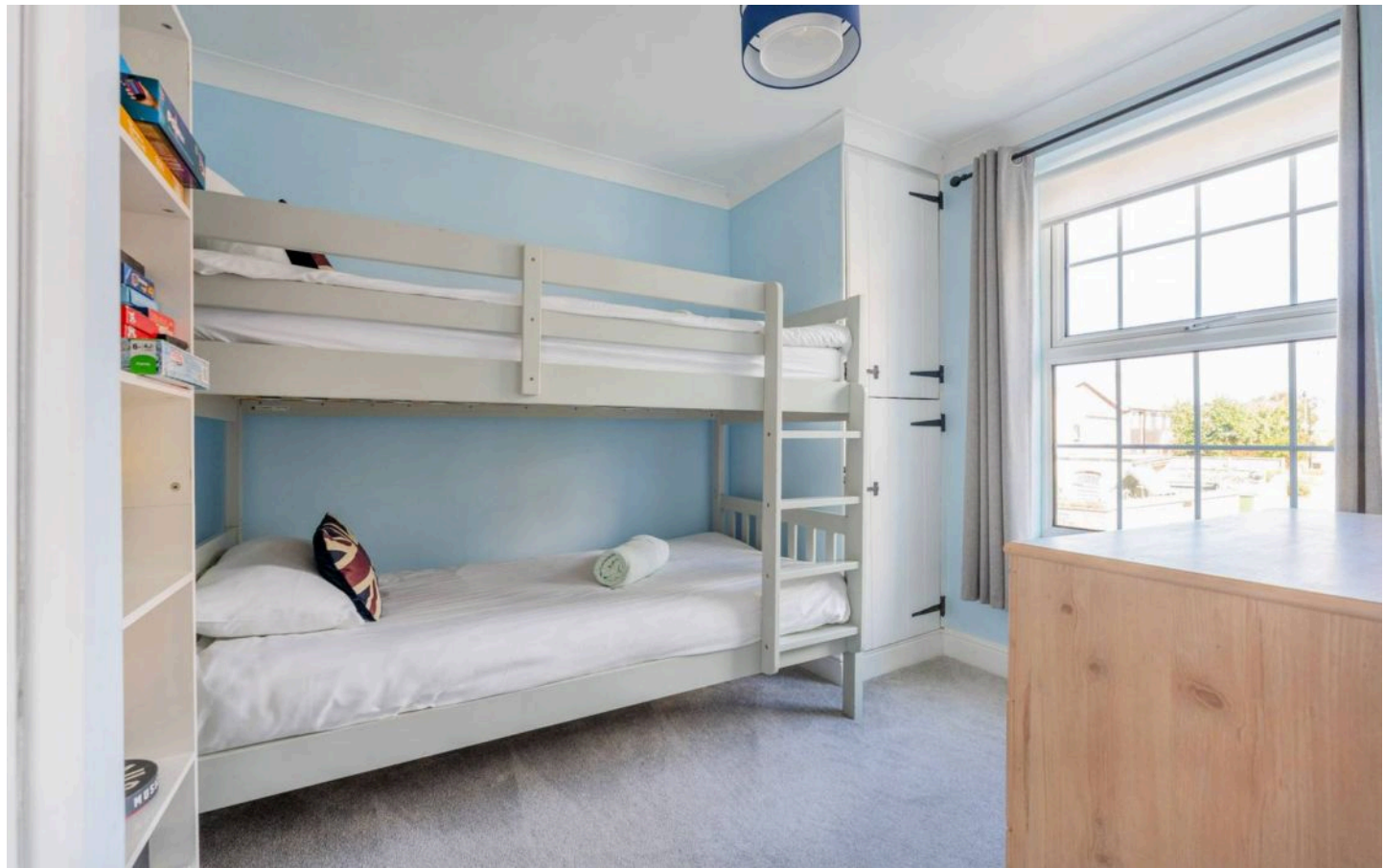
Winterton-On-Sea, Great Yarmouth

This detached Victorian cottage enjoys a prime position just moments from the scenic beach, making it an ideal coastal home or holiday retreat. Its picturesque façade immediately captivates, featuring symmetrical sash windows framing a pitched porch and a vibrant, welcoming front door. A quaint gate opens onto a pathway bordered by established flower beds, setting a delightful first impression.

Step inside to a comfortable sitting room, enhanced by a fireplace with an inset wood burner, providing a warm and inviting focal point. Internal double doors lead through to a cosy snug with an electric fire—an adaptable space perfect for a home office, playroom, or even additional accommodation if needed.

Towards the rear of the home, the dining room encourages intimate family meals and gatherings, while the kitchen is fitted with quality cabinetry, an integrated oven, space for a fridge/freezer, and a generous cupboard, combining practicality with charm. A convenient ground floor shower room completes the space, featuring a modern three-piece suite.

From the kitchen, sliding doors open onto a courtyard, adorned with botanical plants and a patio area, perfect for al-fresco dining or simply relaxing in the sunshine. A timber storage shed provides additional practical storage.



M&B

Jubilee House The Loke

Winterton-On-Sea, Great Yarmouth

Upstairs, four double bedrooms offer comfort and privacy, each benefiting from large sash windows that flood the rooms with natural light. Three of the bedrooms feature built-in storage cupboards. The family bathroom impresses with a modern four-piece suite, including a roll-top bathtub, a shower, hand basin, and a toilet, accommodating all residents in the household.

This beautiful cottage combines coastal charm with practical living, offering a versatile layout for family life or a holiday escape. From its inviting façade and cosy interiors to its sunny courtyard and proximity to Winterton On Sea beach, it provides a quintessential coastal lifestyle in a truly enviable location.

Agents note

Freehold

Fixtures and fittings available under separate negotiation

New chimney and the exterior has been recently re-painted

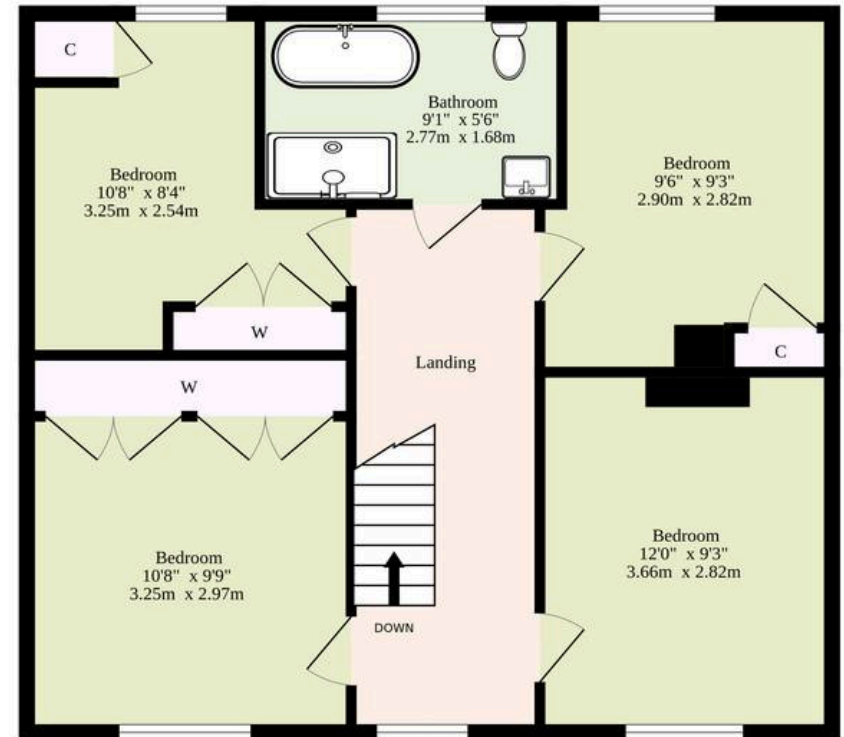


Energy Efficiency Rating		
	Current	Potential
Very energy efficient - lower running costs		
(92+) A		
(81-91) B		
(69-80) C		77
(55-68) D	60	
(39-54) E		
(21-38) F		
(1-20) G		
Not energy efficient - higher running costs		
England, Scotland & Wales		
EU Directive 2002/91/EC		

Ground Floor
571 sq.ft. (53.0 sq.m.) approx.



1st Floor
562 sq.ft. (52.2 sq.m.) approx.



TOTAL FLOOR AREA : 1133 sq.ft. (105.3 sq.m.) approx.

Whilst every attempt has been made to ensure the accuracy of the floorplan contained here, measurements of doors, windows, rooms and any other items are approximate and no responsibility is taken for any error, omission or mis-statement. This plan is for illustrative purposes only and should be used as such by any prospective purchaser. The services, systems and appliances shown have not been tested and no guarantee as to their operability or efficiency can be given.
Made with Metropix ©2025

Dreaming of this home? Let's make it a reality



Meet *Sarah*
Senior Property Consultant



Meet *James*
Property Consultant



Meet *Lauren*
Property Consultant

Minors & Brady
Your home, our market

✉ caister@minorsandbrady.co.uk

☎ 01493 806188

📍 48 High Street, Caister-on-Sea, Great Yarmouth, NR30 5EH

CAISTER-ON-SEA | DEREHAM | DISS | NORWICH | OULTON BROAD | WROXHAM



How can we support

- ✓ Residential Mortgages
- ✓ Protection & Insurance
- ✓ Buy-to-let (personal and limited company)



Matt Waters
Senior Mortgage
and Protection Advisor



Victoria Payne
Mortgage and
Protection Advisor

Scan to book your
appointment today



T: 01692 531372
E: enquiries@norfolk-mortgages.co.uk