

54 Crown Road, Great Yarmouth
Great Yarmouth



Minors & Brady

54 Crown Road

Great Yarmouth

This five-bedroom mid-terrace home in the coastal town of Great Yarmouth offers a rare combination of space, flexibility, and character. Spanning multiple levels, the property features a welcoming entrance hall, a front-facing sitting room filled with natural light, a study that could serve as a fifth bedroom, and a practical kitchen with a separate dining area. Four bedrooms with built-in storage and hand basins, a first-floor bathroom, three WCs, and a wet room provide comfort for busy family life or holiday let arrangements. Additional features include a basement ready for conversion, a double-length garage/covered yard, an enclosed front yard, and both allocated and on-street parking. Perfectly suited for family living or as an investment, this home combines thoughtful design with the relaxed charm of coastal life.



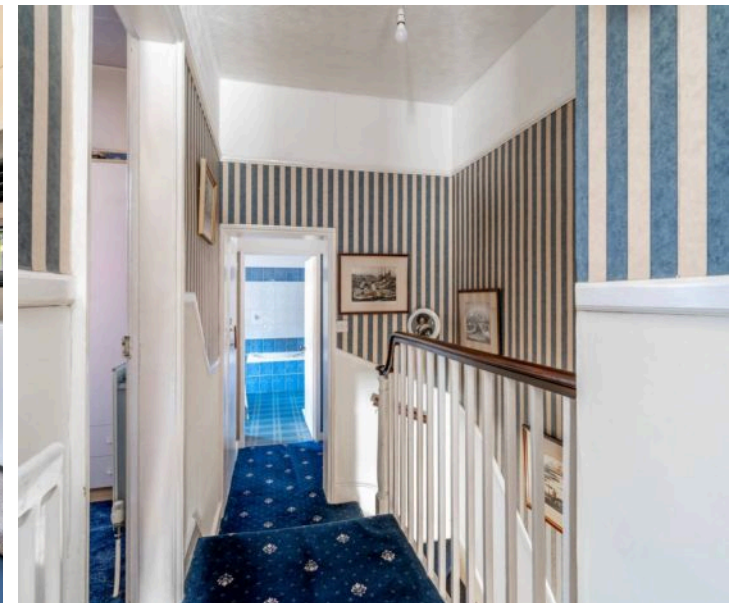


M&B

54 Crown Road

Great Yarmouth

- Five-bedroom mid-terrace residence positioned in the coastal town of Great Yarmouth
- Large family home or an incredible investment opportunity!
- A front-facing sitting room that invites relaxation and entertaining, alongside a flexible study with the potential to be a fifth bedroom
- Kitchen fitted with cabinetry, an oven and spaces for your own appliances, with a separate dining room
- A first floor bathroom, three WC's and a wet room
- Four bedrooms with hand sinks and plenty of built-in storage
- A double-length garage/covered yard and a basement level that can be converted into additional accommodation
- Front yard that is enclosed for privacy
- One allocated parking space and on-street parking available
- Close to the coast, local shops, schools, healthcare facilities and transport links



54 Crown Road

Great Yarmouth

Location

Crown Road is a well-situated residential street in the heart of Great Yarmouth, providing easy access to a variety of local amenities and services. The road is lined with a mix of traditional terraced houses and modern homes, creating a welcoming neighbourhood atmosphere. Residents benefit from a range of nearby shops, including local convenience stores, small cafes, and takeaways, with larger supermarkets such as Tesco and Sainsbury's just a short walk or drive away.

For families, Crown Road is conveniently close to several schools. St George's Primary School and Nursery lie within walking distance, while other options such as St Nicholas Priory Primary School and Great Yarmouth Primary Academy are also nearby, offering a range of educational choices for children of all ages. Healthcare needs are well catered for in the area, with local GP practices, dental clinics, and pharmacies easily accessible. For more extensive medical care, James Paget University Hospital is a short drive away, providing emergency and specialist services to the community.

Transport links from Crown Road are excellent. Great Yarmouth railway station is a short distance from the street, offering regular services to Norwich and connections beyond. Local bus services run frequently along nearby main roads, and road connections via the A47 ensure convenient travel to surrounding towns and the Norfolk coast. On-street parking is available for residents, and cycling routes in the area make commuting by bike a practical option.

M&B



54 Crown Road

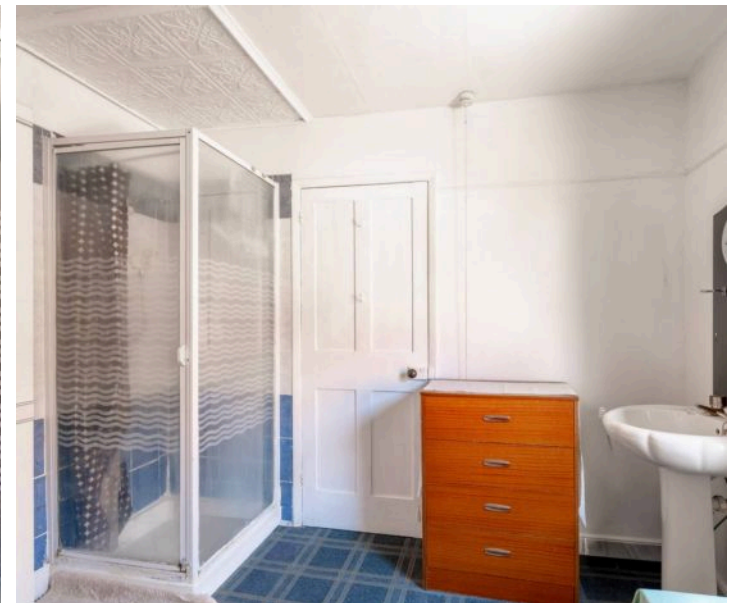
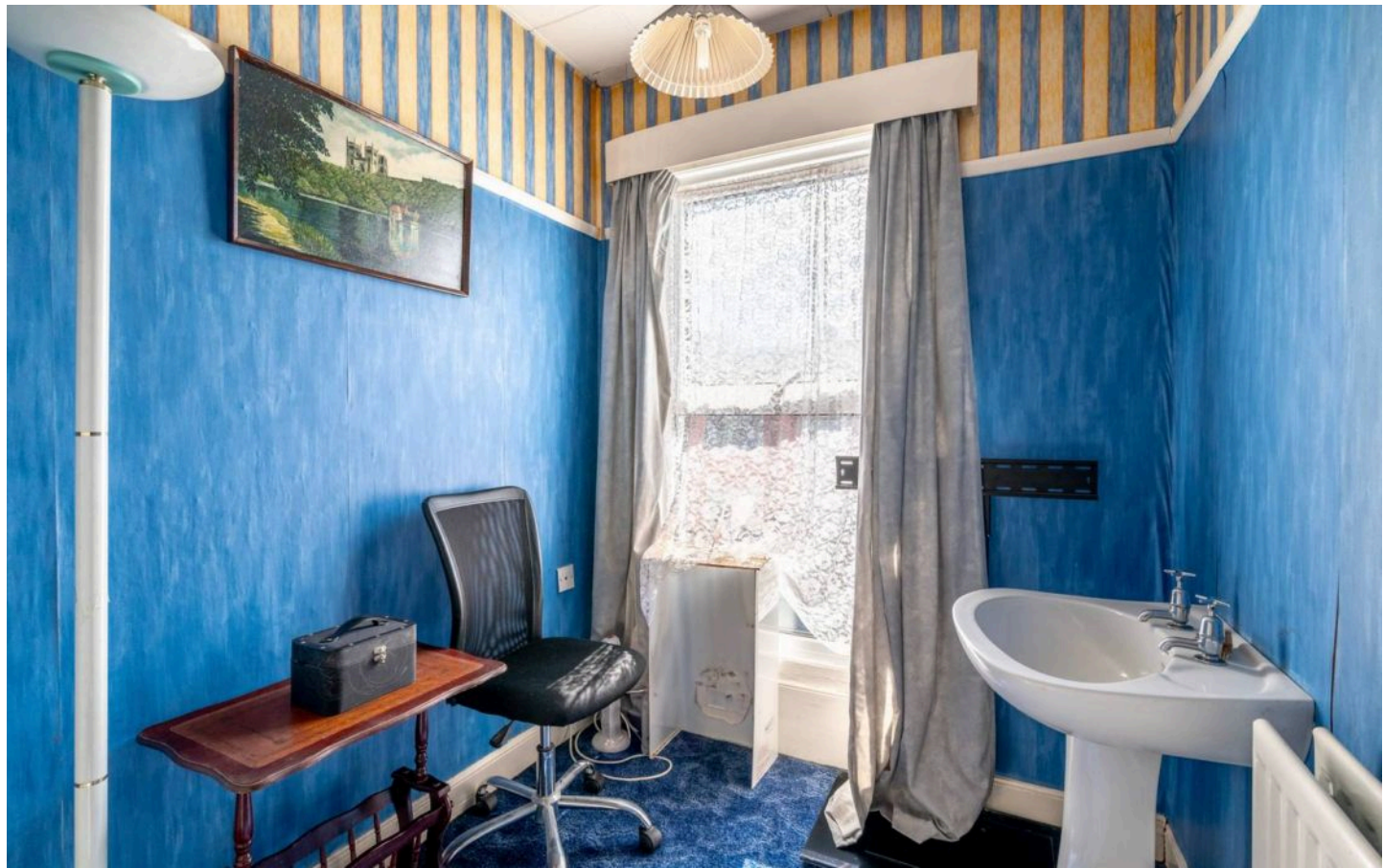
Great Yarmouth

This five-bedroom mid-terrace residence, set in the heart of the coastal town of Great Yarmouth, offers an enviable blend of space, versatility, and seaside living. Whether you're searching for a spacious family home or a rewarding investment opportunity, this property is brimming with potential.

Step inside through the welcoming entrance hall and discover a home filled with character, featuring cottage-style doors throughout and the comfort of gas central heating and double-glazed windows. At the front of the property, the sitting room provides a warm and inviting space for relaxation or entertaining, while a separate study offers flexibility, ideal for home working or easily adapted into a fifth bedroom.

The kitchen, fitted with cabinetry and an oven with space for your own appliances, serves as the heart of the home, complemented by a dedicated dining room where friends and family can gather. A practical lifestyle is supported by a first-floor bathroom, three WC's, and even a wet room, perfect for rinsing off sandy shoes after a day at the beach or washing down the dogs after a coastal walk.

With two staircases positioned at either end of the home, the layout feels spacious and adaptable. Four comfortable bedrooms, each with their own hand basin and built-in storage off the landings, ensure plenty of convenience and privacy for every member of the household.



54 Crown Road

Great Yarmouth

The property also benefits a unique basement level, offering exciting potential for conversion into additional accommodation or leisure space, as well as a double-length garage/covered yard that could cater to hobbies, storage, or parking. Outside, a private, enclosed front yard offers a sheltered place to enjoy the fresh sea air, while an allocated parking space and on-street options add practicality to everyday living.

From family life to investment potential, this property captures the very essence of Great Yarmouth living: space, charm, and the coast right on your doorstep.

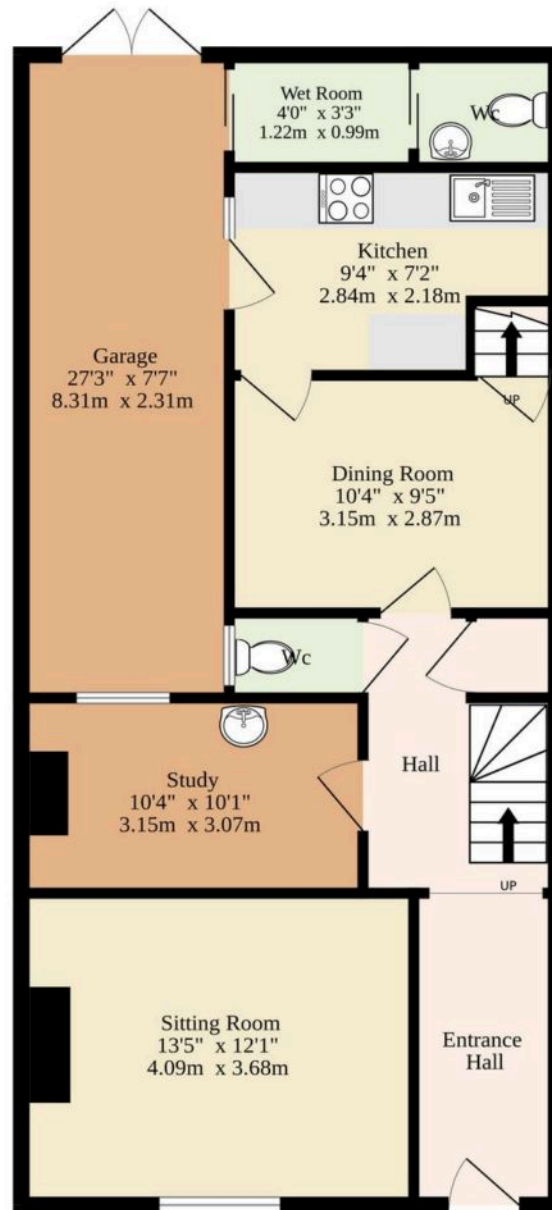
Agents note

Freehold

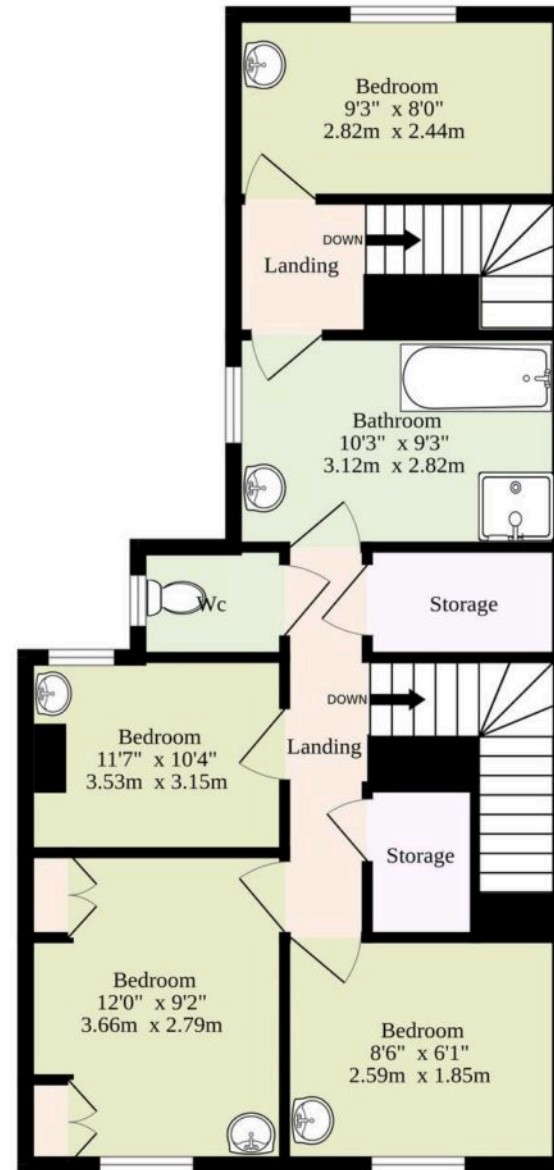


M&B

Ground Floor
769 sq.ft. (71.4 sq.m.) approx.



1st Floor
571 sq.ft. (53.0 sq.m.) approx.



TOTAL FLOOR AREA : 1340 sq.ft. (124.5 sq.m.) approx.

Whilst every attempt has been made to ensure the accuracy of the floorplan contained here, measurements of doors, windows, rooms and any other items are approximate and no responsibility is taken for any error, omission or mis-statement. This plan is for illustrative purposes only and should be used as such by any prospective purchaser. The services, systems and appliances shown have not been tested and no guarantee as to their operability or efficiency can be given.
Made with Metropix ©2025

Dreaming of this home? Let's make it a reality



Meet Sarah
Senior Property Consultant



Meet James
Property Consultant



Meet Lauren
Property Consultant

Minors & Brady
Your home, our market

 caister@minorsandbrady.co.uk

 01493 806188

 48 High Street, Caister-on-Sea, Great Yarmouth, NR30 5EH

CAISTER-ON-SEA | DEREHAM | DISS | NORWICH | OULTON BROAD | WROXHAM



How can we support

- ✓ Residential Mortgages
- ✓ Protection & Insurance
- ✓ Buy-to-let (personal and limited company)



Matt Waters
Senior Mortgage
and Protection Advisor



Victoria Payne
Mortgage and
Protection Advisor

Scan to book your
appointment today



T: 01692 531372
E: enquiries@norfolk-mortgages.co.uk