



Church Cottage The Street, Metfield

Harleston



Minors & Brady

Church Cottage The Street

Metfield, Harleston

Whispers of history linger in every corner of this enchanting Metfield cottage. Nestled on a quiet street, the warm yellow exterior and climbing foliage give it a storybook charm that is impossible to ignore. Inside, parquet flooring, exposed wooden beams, and a log-burning fireplace create a welcoming sense of character and warmth. Four reception areas—including a sitting room flowing into a dining space and conservatory—offer versatile living and entertaining spaces bathed in natural light. The cottage accommodates four spacious bedrooms, including a master with ensuite, alongside a modern three-piece bathroom. Outside, three separate gardens, a terrace, lawn, garage, workshops, and generous parking provide both practicality and beauty. Combining period elegance with modern functionality, this home is a rare sanctuary in the heart of the Suffolk countryside.



M&B



M&B

Church Cottage The Street

Metfield, Harleston

The Location

Located in the charming rural village of Metfield, this period cottage sits on a quiet, picturesque street, offering a peaceful setting surrounded by rolling countryside and a welcoming local community. Just a short stroll from the village shop and traditional amenities, the area combines convenience with the tranquil pace of village life.

The nearby villages and market towns of Harleston and Halesworth provide a wider range of shops, cafes, schools, and leisure facilities, while excellent road links ensure easy access to surrounding areas.

For those who love the outdoors, Metfield is an ideal base. The surrounding countryside is crisscrossed with scenic walking and cycling routes, leading past fields, woodlands, and historic landmarks, allowing residents to fully enjoy the natural beauty of Suffolk. The village itself is steeped in history, with picturesque cottages and the nearby church adding character and a sense of timeless charm.

Whether exploring local trails, enjoying the vibrant village community, or simply taking in the peaceful rural views, this location offers the perfect blend of country living and accessibility.



M&B

Church Cottage The Street

Metfield, Harleston

The Street, Metfield

Placed in the picturesque village of Metfield, this enchanting period home exudes character and charm at every turn.

Painted in a warm, welcoming yellow, the cottage is framed by climbing foliage and mature shrubs, with a quaint picket gate opening to a patio pathway. Just beyond, the village church peeks gently in the background, adding a touch of timeless beauty to this fairytale setting.

Step through the entrance hallway and you are immediately greeted by a reception room that radiates warmth and character. A charming brick nook houses a log burner beneath a striking wooden mantle, while exquisite parquet flooring stretches throughout, complementing the period details that make this home truly special.

The kitchen offers ample storage and space for appliances, combining practical living with classic style. An internal porch, additional storage, and an outdoor WC further enhance the functional layout of this welcoming home.

The cottage boasts four beautifully proportioned reception areas, including a sitting room with rich wooden beams, an open connection to a dining space and French doors that lead into a light-filled conservatory.



M&B

Church Cottage The Street

Metfield, Harleston

These versatile spaces offer an ideal setting for family gatherings, entertaining, or simply enjoying quiet moments bathed in natural light.

Upstairs, four generous bedrooms await, including a master with an ensuite shower room. A modern three-piece bathroom serves the remaining rooms.

All bedrooms are light, airy, and brimming with period charm, ensuring comfort and tranquility throughout.

Outside, the property features three separate, beautifully maintained gardens, a lawn, terrace area and floral displays that enhance the cottage's storybook allure. The grounds also include a garage, two workshops, and generous parking for numerous vehicles.

For those seeking space to work from home, the loft and office space offer versatile solutions for modern living, while still preserving the home's historic character.

With its idyllic setting, period features, and extensive accommodation, this Metfield cottage is a rare find, combining practical family living with the romance and charm of a bygone era. It is more than a home; it is a story waiting to be continued.

Agents Note

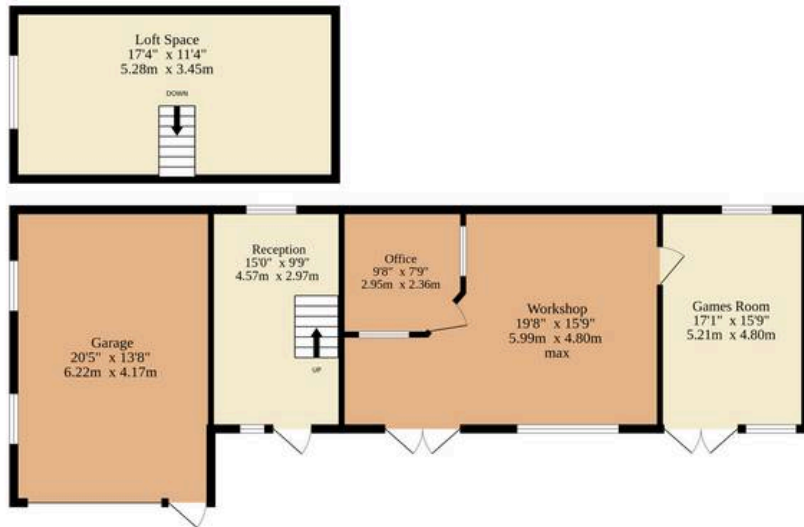
Sold Freehold

Connected to oil-fired heating/log burners, mains water, electricity and drainage.

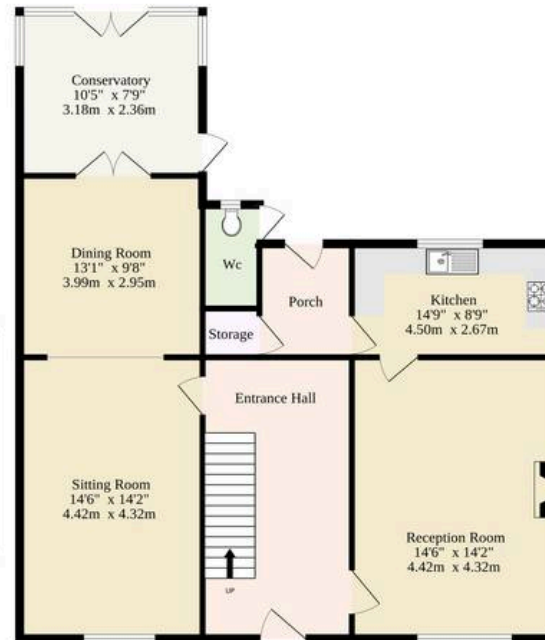


M&B

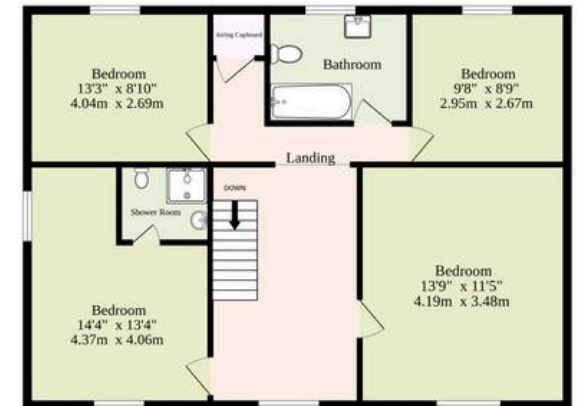
Outbuildings
1294 sq.ft. (120.2 sq.m.) approx.



Ground Floor
873 sq.ft. (81.1 sq.m.) approx.



1st Floor
704 sq.ft. (65.4 sq.m.) approx.



TOTAL FLOOR AREA : 2871 sq.ft. (266.7 sq.m.) approx.

Whilst every attempt has been made to ensure the accuracy of the floorplan contained here, measurements of doors, windows, rooms and any other items are approximate and no responsibility is taken for any error, omission or mis-statement. This plan is for illustrative purposes only and should be used as such by any prospective purchaser. The services, systems and appliances shown have not been tested and no guarantee as to their operability or efficiency can be given.

Made with Metropix ©2025

Dreaming of this home? Let's make it a reality



Meet *Nicola*
Branch Manager



Meet *Theo*
Property Consultant



Meet *Anya*
Aftersales Progressor

Minors & Brady
Your home, our market

 diss@minorsandbrady.co.uk

 01379 771444

 46-47 Mere Street, Diss, IP22 4AG

CAISTER-ON-SEA | DEREHAM | DISS | NORWICH | OULTON BROAD | WROXHAM



How can we support

- ✓ Residential Mortgages
- ✓ Protection & Insurance
- ✓ Buy-to-let (personal and limited company)



Matt Waters
Senior Mortgage
and Protection Advisor



Victoria Payne
Mortgage and
Protection Advisor

Scan to book your
appointment today



T: 01692 531372
E: enquiries@norfolk-mortgages.co.uk