



1 Churchill Road, Great Yarmouth

1 Churchill Road

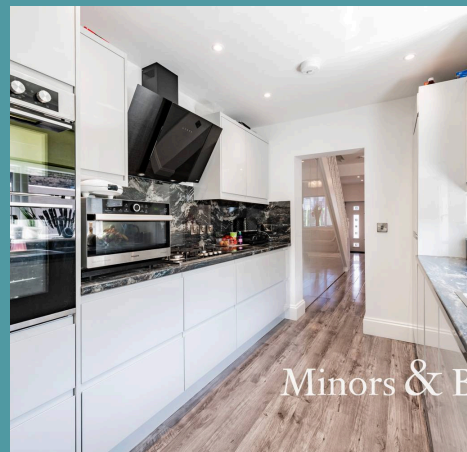
Great Yarmouth, Great Yarmouth

GUIDE PRICE: £220,000 to £230,000 Modern interior throughout. Minors and Brady are pleased to present this three bedroom end terrace in the coastal to...

Council Tax band: TBD

EPC Energy Efficiency Rating: E

EPC Environmental Impact Rating: E



Minors & B



Minors & B



Minors & B

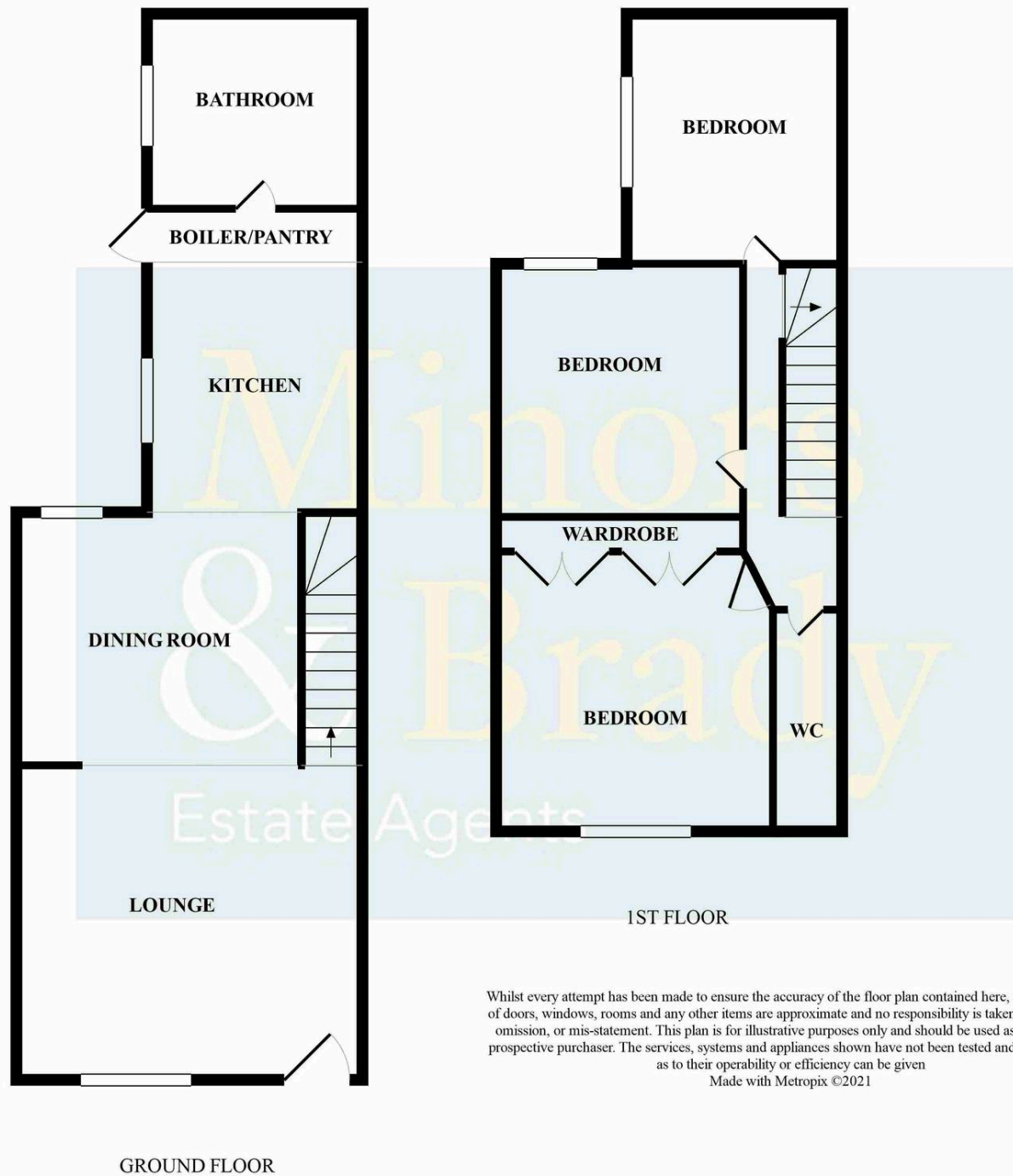


1 Churchill Road

Great Yarmouth, Great Yarmouth

GUIDE PRICE: £220,000 to £230,000 Modern interior throughout. Minors and Brady are pleased to present this three bedroom end terrace in the coastal town of Great Yarmouth. The property is finished to a high standard with luxury features throughout, high spec appliances and an open plan feel to the ground floor. This is a fantastic home for family living, close to local amenities and a short walk to the beach.





Whilst every attempt has been made to ensure the accuracy of the floor plan contained here, measurements of doors, windows, rooms and any other items are approximate and no responsibility is taken for any error, omission, or mis-statement. This plan is for illustrative purposes only and should be used as such by any prospective purchaser. The services, systems and appliances shown have not been tested and no guarantee as to their operability or efficiency can be given
Made with Metropix ©2021

