



Penfold The Green, Aldborough

In Excess of £500,000

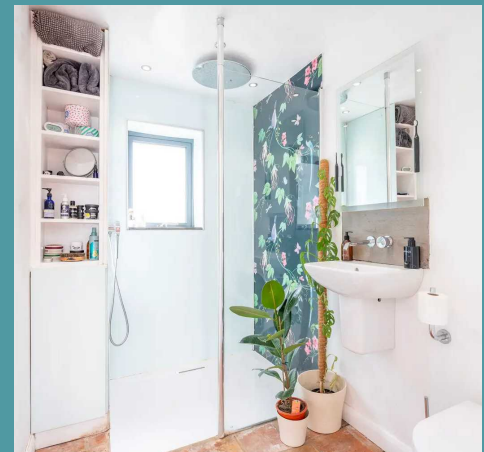
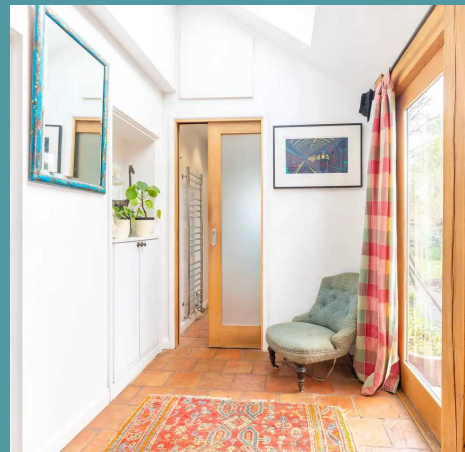
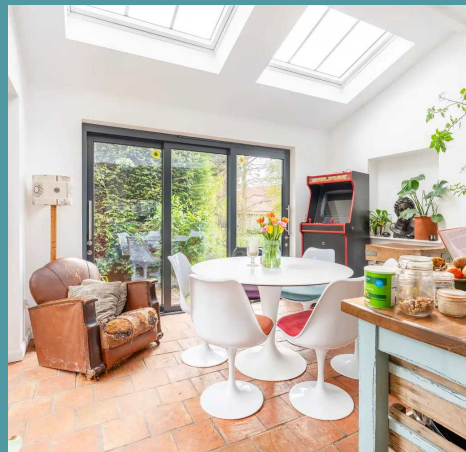
Penfold The Green

Aldborough, Norwich

This meticulously crafted property is a rare find, offering a unique opportunity to own a piece of history while enjoying the comforts of modern living. With its seamless fusion of old-world charm, contemporary elegance, and convenient location, this residence stands as a testament to quality craftsmanship and refined living. Don't miss the chance to acquire this remarkable residence.

LOCATION

Aldborough is a quaint village nestled in the heart of North Yorkshire, England, boasting a rich tapestry of history and charm. Situated just a few miles from the historic city of York, Aldborough enjoys a picturesque setting amidst gently rolling countryside, with the meandering River Ure nearby adding to its scenic allure. The village itself exudes a timeless appeal, with its cobblestone streets, well-preserved Georgian architecture, and welcoming community atmosphere. Visitors to Aldborough can explore its fascinating Roman heritage, as the village was once an important Roman settlement known as Isurium Brigantum. Today, remnants of this ancient past can still be seen in the form of impressive ruins, including a well-preserved Roman town wall and the remains of a grand Roman basilica. With its idyllic surroundings and rich historical significance, Aldborough offers a captivating glimpse into England's past while providing a tranquil retreat for modern-day travelers.





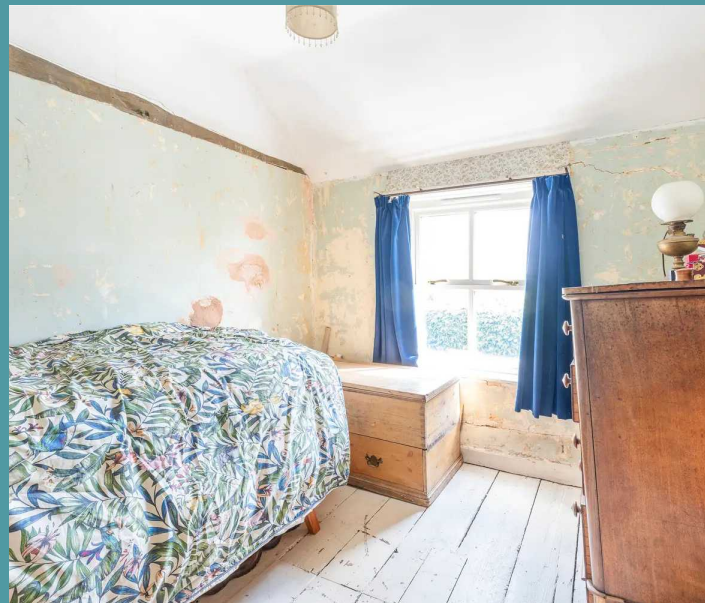
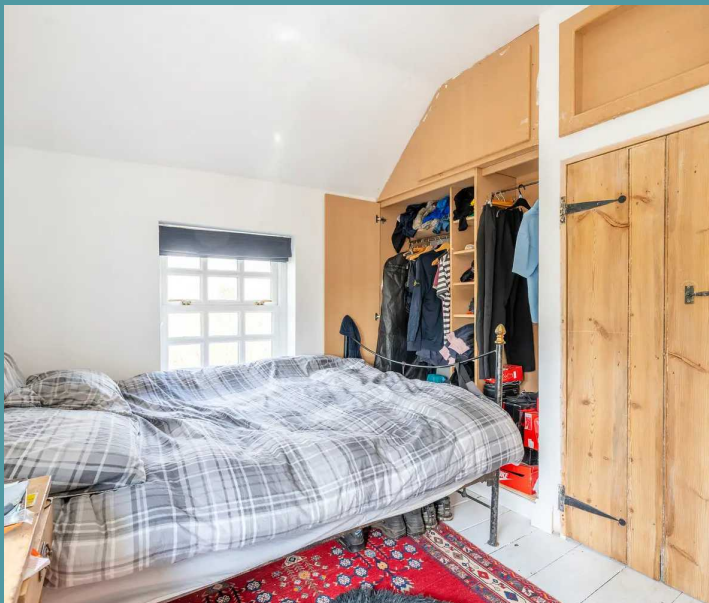
Penfold The Green

Aldborough, Norwich

Upon entering, one is immediately struck by the meticulous care and attention to detail that has gone into restoring and maintaining this home. From the loving preservation of the property's original features to its high standard presentation, every aspect exudes sophistication and warmth. A bright and welcoming entrance hall greets you, with the addition of a convenient shower room.

At the heart of the home lies an incredible open-plan kitchen/diner, ensuring effortless interaction when hosting occasions and everyday family living. Discover the joy of culinary pursuits in the traditional AGA-equipped kitchen, while the adjacent dining area beckons guests to gather and linger over meals and conversations. As you enter the sitting room, you'll immediately feel the warmth from the log burner, creating a warm and inviting ambiance. This is where you can showcase your most comfortable furniture and decorative pieces.

Ascend the staircase, where you will encounter three well-appointed bedrooms, each designed to offer you relaxation and privacy. The bathroom comprises of a three piece suite, accommodating all family members and guests.





Penfold The Green

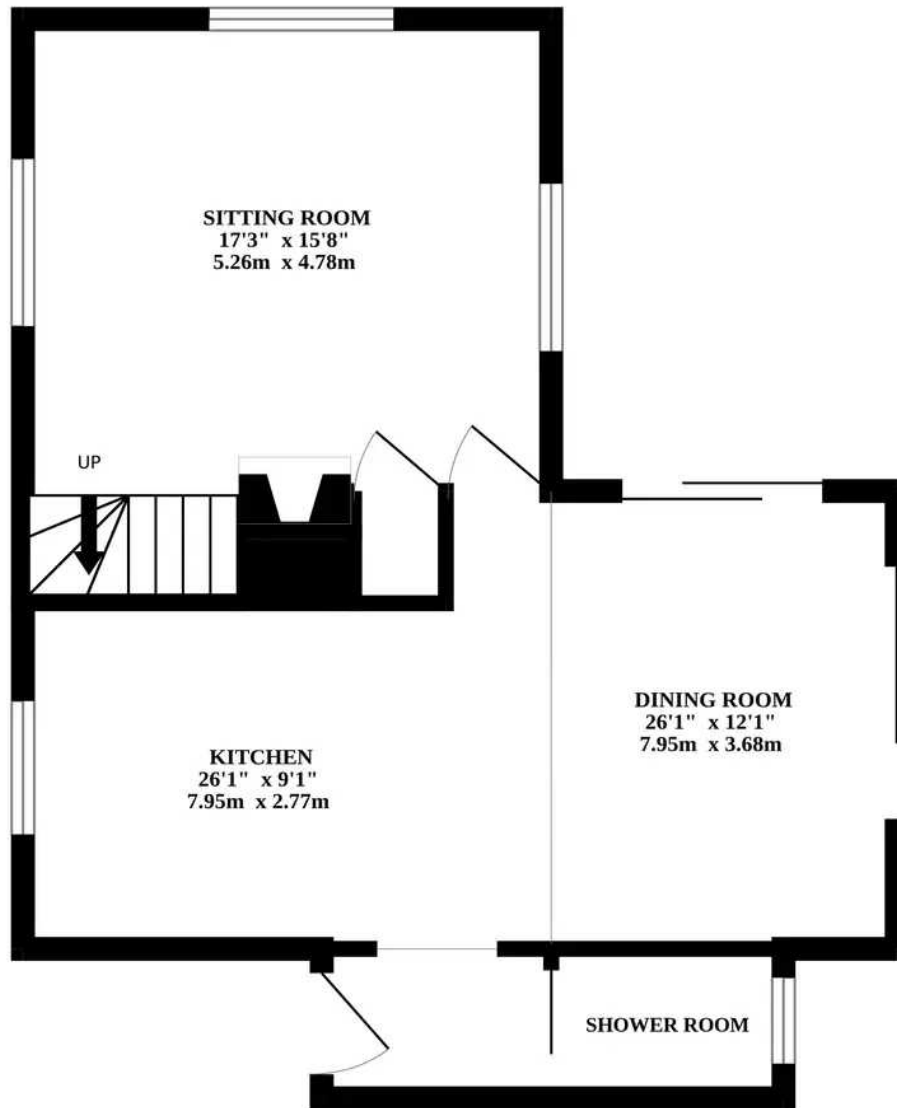
Aldborough, Norwich

Beyond the interiors, this property also features a driveway and a garage/workshop, providing ample space for parking and storage needs. The beautifully maintained garden offers a tranquil escape from the hustle and bustle of daily life, primarily laid to lawn, boarded by planted beds and hedging. Overall, it is fully enclosed so you can enjoy in seclusion.

- REMARKABLE DETACHED RESIDENCE
- OBTAINING THE PROPERTIES ORIGINAL FEATURES
- RESTORED AND MAINTAINED BY THE CURRENT OWNERS - PRESENTED TO A HIGH STANDARD
- INCREDIBLE OPEN-PLAN KITCHEN/DINER - TRADITIONAL AGA
- COMFORTABLE SITTING ROOM - LOG BURNER
- THREE BEDROOMS & A BATHROOM
- DRIVEWAY & GARAGE/WORKSHOP
- BEAUTIFULLY MAINTAINED GARDEN - FULLY ENCLOSED
- IN CLOSE PROXIMITY TO ALL LOCAL AMENITIES AND NATURAL SURROUNDINGS



GROUND FLOOR



1ST FLOOR

