



Hazel Dene Dog Lane, Horsford

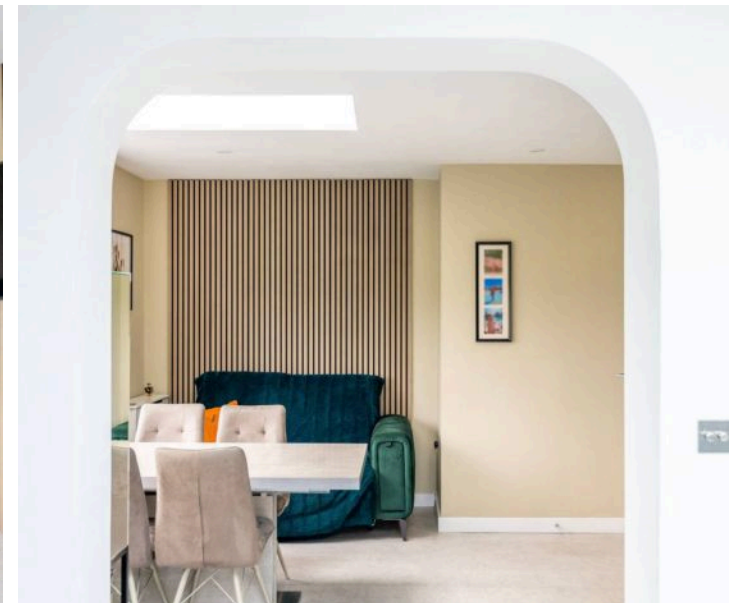
Norwich



Minors & Brady

Whispered along the leafy curve of Dog Lane, this discreet two-bedroom bungalow in the sought-after village of Horsford feels more discovered than found, a home that quietly reveals its beauty rather than announces it. Wrapped in dark varied red brick and framed by sleek, modern windows. Inside, every element has been thoughtfully curated, from the deep green-panelled hallway and tactile wooden doors to the inviting sitting room, where a log burner glows against a matching green chimney breast. The flow of the home feels natural and unforced, light filters softly through the dining area's skylight, leading the eye to a kitchen of striking design, rich cabinetry, and a large picture window framing open field views. Practicality is never forgotten, with a utility room featuring a second Belfast sink and even a dedicated dog shower for countryside living made easy. Step outside to find a generous garden that unfolds into views of nature, complemented by a log cabin complete with air conditioning and a bespoke play area that adds a joyful touch. This home is more than a residence; it's a retreat that embodies the grace of rural life, the ease of modern living, and the quiet confidence of a place truly at ease with itself.

- Tranquil Dog Lane location in Horsford, offering a discreet setting surrounded by character homes and village charm
- High-spec renovation throughout, combining craftsmanship, texture and modern comfort in every detail
- Statement exterior design with dark red varied brickwork, contemporary black-framed windows and a long private driveway for multiple vehicles
- Insulated log cabin with air conditioning and power—perfect as a bar, studio, or year-round garden office
- Cosy sitting room with soft carpeting, a log burner set into a green chimney breast, concealed storage, and a recessed log nook
- Open-plan dining and kitchen zone designed with ambient lighting, acoustic wall panelling and seamless flow between spaces



M&B



M&B

Hazel Dene Dog Lane

Horsford, Norwich

The Location

Perfectly placed in Horsford, Hazel Dene enjoys close proximity to the area's leafy forest trails—ideal for daily dog walks, Sunday strolls, or weekend bike rides beneath the canopy. For families, local parks are within easy reach, providing great spots for after-school play, while a range of nearby schooling options adds to the everyday convenience of this well-connected village setting.

A selection of local amenities makes life at Hazel Dene feel effortlessly simple. Within the village you'll find a Co-op and post office for everyday essentials, while nearby Taverham offers a Tesco store and a Lidl, and Hellesdon provides additional shops and services, ensuring everything you need is close at hand. For locals and visitors alike, the much-loved Dog pub is just around the corner, offering a warm welcome (with dogs very much included!).

Adding to the location's everyday appeal is its seamless access to the Northern Distributor Road (NDR). This handy connection makes commuting or day-tripping to nearby villages and towns refreshingly straightforward, while frequent bus routes provide easy access to Norwich, a vibrant and historic city filled with excellent shopping, cultural attractions, dining, and entertainment.

The Northern Distributor Road (NDR) also offers quick routes out towards the Norfolk Broads, perfect for boating and waterside days out—as well as the unspoilt North Norfolk coastline, renowned for its sandy beaches, wildlife, and charming coastal towns.



M&B

Hazel Dene Dog Lane

Horsford, Norwich

Dog Lane, Horsford

Set along the quietly charming Dog Lane in the desirable village of Horsford, this discreet two-bedroom bungalow offers a beautiful combination of character, craftsmanship and pure comfort. Horsford itself is a place known for its strong sense of community and easy accessibility to both countryside and city life, and this home perfectly reflects that balance, private and peaceful, yet wonderfully connected.

A long driveway welcomes you, drawing the eye toward the home's striking dark varied red brick exterior, offset by sleek, dark-framed modern windows that immediately convey quality. Recently renovated to a high specification, this property offers ample parking for multiple vehicles and an impressive sense of arrival.

Stepping inside, the entrance hallway sets the tone, rich green panelling paired with warm wooden internal doors and cool chrome fixtures creates a tactile and welcoming first impression. A cleverly designed cloakroom area sits just in the hallway, an ideal space to shed coats and boots after country walks, establishing practicality.

The sitting room invites you to pause and unwind. Soft carpet underfoot, a log burner resting against a deep green chimney breast and bespoke built-in storage make this a space of quiet relaxation. A thoughtfully designed nook for storing firewood keeps everything close at hand while adding a touch of rustic charm.



M&B

Hazel Dene Dog Lane

Horsford, Norwich

The two double bedrooms form the home's sleeping quarters, each offering generous proportions and a restful atmosphere. Between them lies a beautifully finished shower room, where crittall-inspired glazing meets contemporary tiling and refined sanitaryware, creating a sense of understated luxury.

Flowing through to the dining area, natural light dances across the space, courtesy of a well-placed window and a statement skylight overhead. Acoustic panelling softens the room and adds both texture and warmth, perfect for long, unhurried dinners.

An open connection leads to the kitchen, where design and function meet in perfect harmony. Richly toned cabinetry, a Belfast sink and recessed appliance spaces are elevated by a large window framing the garden and open field views beyond.

A sky lantern overhead floods the room with light, making this a space that feels alive and inspiring throughout the day.

Practicality continues in the utility room, which mirrors the kitchen's finish and features another Belfast sink and even a dog shower, ideal for cleaning muddy paws before rejoining the comforts of home.

Rear access from here leads out into the generous garden, an outdoor space that backs onto beautiful countryside views.



M&B

Hazel Dene Dog Lane

Horsford, Norwich

Within the grounds, a large storage shed and a fully equipped log cabin extend the home's versatility. Whether envisioned as a bar for evenings with friends or a serene home office, this space—complete with an air conditioning unit—ensures year-round comfort. A bespoke play area with soft padding adds a joyful family element, completing this exceptional home where every detail has been considered and every corner tells a story of thoughtful living.

This is more than a bungalow—it's a quietly confident home that captures the essence of modern rural life: refined, restful, and radiating a sense of belonging.

Agents Note

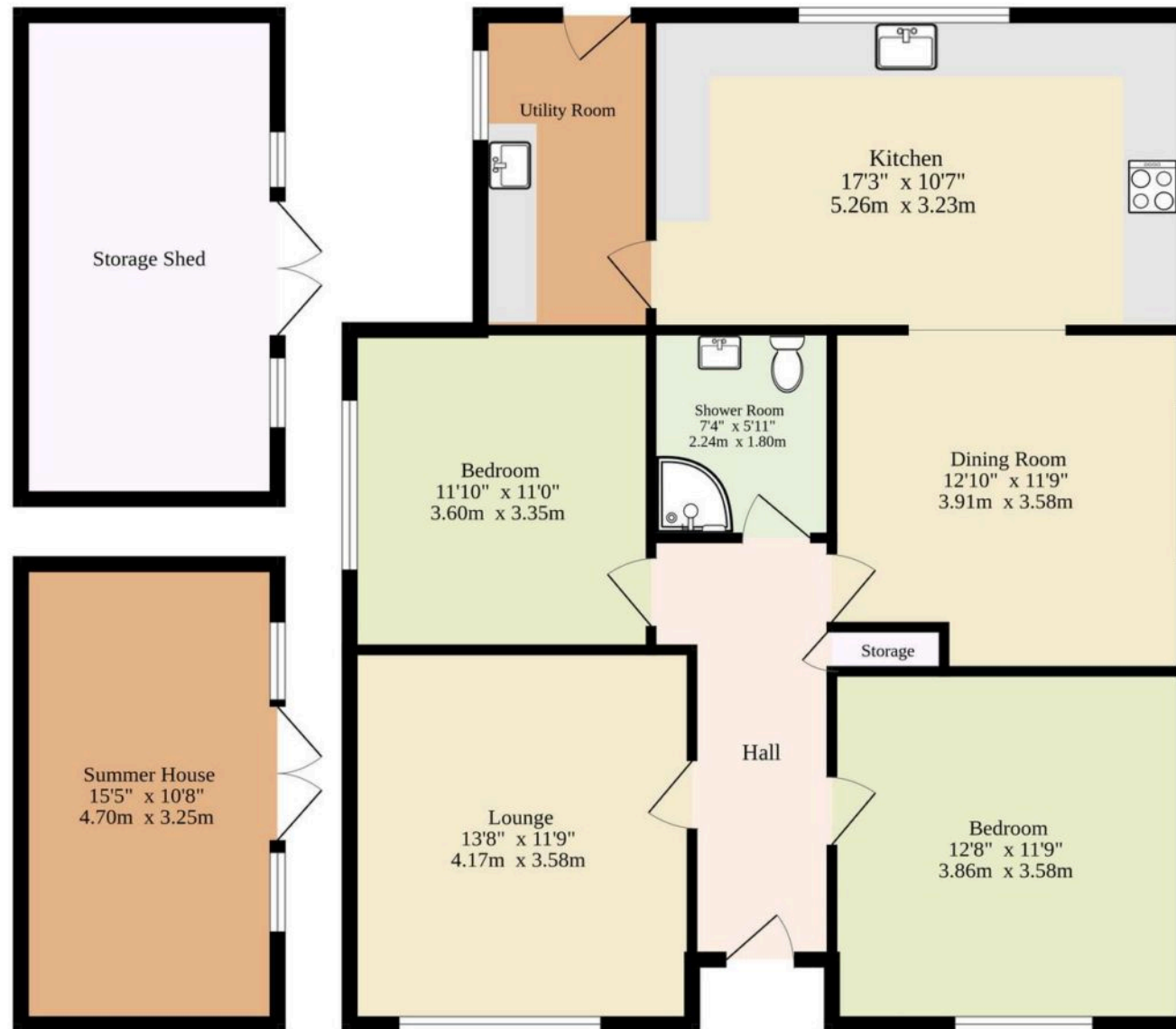
Sold Freehold

Connected to oil-fired heating, mains water, electricity and treatment plant.



M&B

Ground Floor
1268 sq.ft. (117.8 sq.m.) approx.



Sqft Include Storage Shed And Summer House

TOTAL FLOOR AREA : 1268 sq.ft. (117.8 sq.m.) approx.

Whilst every attempt has been made to ensure the accuracy of the floorplan contained here, measurements of doors, windows, rooms and any other items are approximate and no responsibility is taken for any error, omission or mis-statement. This plan is for illustrative purposes only and should be used as such by any prospective purchaser. The services, systems and appliances shown have not been tested and no guarantee as to their operability or efficiency can be given.
Made with Metropix ©2025

Dreaming of this home? Let's make it a reality



Meet *Abi*
Branch Partner



Meet *Karol*
Property Valuer



Meet *Claire*
Aftersales Team Leader

Minors & Brady
Your home, our market



wroxham@minorsandbrady.co.uk



01603 783088



6 Church Road, Wroxham, Norwich, NR12 8UG

CAISTER-ON-SEA | DEREHAM | DISS | NORWICH | OULTON BROAD | WROXHAM



How can we support

- ✓ Residential Mortgages
- ✓ Protection & Insurance
- ✓ Buy-to-let (personal and limited company)



Matt Waters
Senior Mortgage
and Protection Advisor



Victoria Payne
Mortgage and
Protection Advisor

Scan to book your
appointment today



T: 01692 531372
E: enquiries@norfolk-mortgages.co.uk