



18 Willow Avenue, Bradwell

Great Yarmouth



Minors & Brady

18 Willow Avenue

Bradwell, Great Yarmouth

Enjoy effortless single-level living in the heart of Bradwell with this charming chain-free semi-detached bungalow. Perfect for downsizers or anyone seeking a relaxed, practical home, it showcases light-filled interiors, a welcoming sitting room with a traditional fireplace, and two comfortable bedrooms. Outside, a low-maintenance garden featuring a resin patio, summerhouse, and timber shed offers the ideal space to unwind, while a paved driveway and garage provide convenient parking and storage. Combining character, comfort, and village lifestyle, this bungalow is a rare opportunity not to be missed.



M&B



M&B

18 Willow Avenue

Bradwell, Great Yarmouth

- Chain free
- Semi-detached bungalow positioned in the village of Bradwell
- Perfect choice for someone looking to downsize, or if you require a single-level layout
- Kitchen fitted with cabinetry, an integrated oven, a butler sink and under-counter areas for your appliances, ready for you to personalise
- Spacious, light-filled sitting room accentuated by a traditional fireplace, inviting relaxation and entertaining
- Two bedrooms offering comfort and privacy, complemented by a shower room
- A private, low-maintenance garden featuring a Resin patio for seating arrangements, a maintained lawn, planted beds, a timber storage shed and a summerhouse
- A paved driveway providing off-road parking for multiple vehicles and a timber garage for storage/workshop use
- Close to local shops, schools, healthcare facilities and transport links



M&B

18 Willow Avenue

Bradwell, Great Yarmouth

A porch entrance welcomes you into a bright and inviting entrance hall, setting the tone for the rest of the home. The kitchen is thoughtfully designed, featuring fitted cabinetry, an integrated oven, a classic butler sink, and under-counter spaces ready for your appliances, offering a fantastic canvas to personalise to your taste.

The spacious sitting room is filled with natural light and centred around a traditional fireplace, creating a warm and inviting space perfect for relaxing evenings or entertaining family and friends. Two well-proportioned bedrooms provide privacy and comfort, complemented by a practical shower room comprising of a three-piece suite.

Step outside to discover a private, low-maintenance garden designed for effortless enjoyment. A resin patio provides the perfect spot for seating arrangements, while the maintained lawn and planted beds add a touch of greenery. Additional features include a timber storage shed and a charming summerhouse, ideal for hobbies or for storing your garden equipment.

At the front of the residence is a paved driveway that provides off-road parking for multiple vehicles, leading down to a timber garage that is ideal for versatile storage or workshop space.

With its single-level layout, generous outdoor space, and desirable village location, this bungalow presents a rare opportunity to embrace a relaxed and fulfilling lifestyle in Bradwell.

M&B



Ground Floor
729 sq.ft. (67.7 sq.m.) approx.



Sqft Includes The Garage

TOTAL FLOOR AREA : 729 sq.ft. (67.7 sq.m.) approx.

Whilst every attempt has been made to ensure the accuracy of the floorplan contained here, measurements of doors, windows, rooms and any other items are approximate and no responsibility is taken for any error, omission or mis-statement. This plan is for illustrative purposes only and should be used as such by any prospective purchaser. The services, systems and appliances shown have not been tested and no guarantee as to their operability or efficiency can be given.
Made with Metropix ©2025

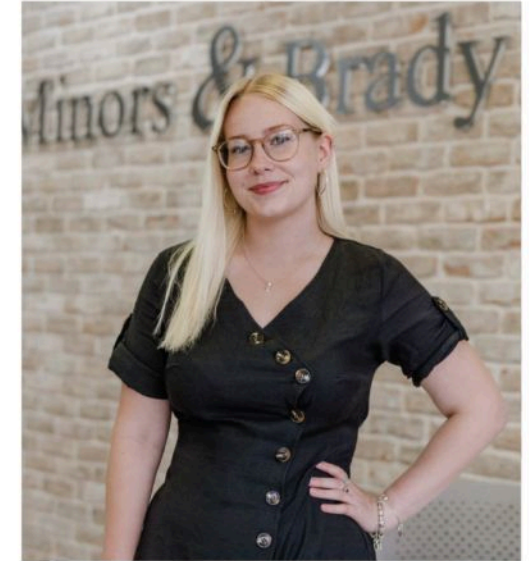
Dreaming of this home? Let's make it a reality



Meet Sarah
Senior Property Consultant



Meet James
Property Consultant



Meet Lauren
Property Consultant

Minors & Brady
Your home, our market

 caister@minorsandbrady.co.uk

 01493 806188

 48 High Street, Caister-on-Sea, Great Yarmouth, NR30 5EH

CAISTER-ON-SEA | DEREHAM | DISS | NORWICH | OULTON BROAD | WROXHAM



How can we support

- ✓ Residential Mortgages
- ✓ Protection & Insurance
- ✓ Buy-to-let (personal and limited company)



Matt Waters
Senior Mortgage
and Protection Advisor



Victoria Payne
Mortgage and
Protection Advisor

Scan to book your
appointment today



T: 01692 531372

E: enquiries@norfolk-mortgages.co.uk