



19 Stable Field Way, Hemsby

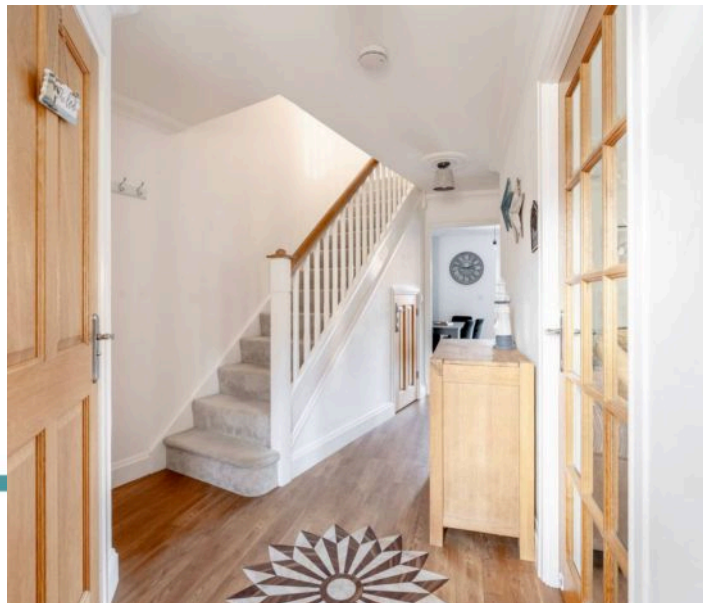
Great Yarmouth

Minors & Brady

19 Stable Field Way

Hemsby, Great Yarmouth

Set in a sought-after area of Hemsby, this beautifully presented three-bedroom mid-terraced home combines modern living with effortless style. The ground floor offers a welcoming sitting room perfect for relaxation and entertaining, alongside an open-plan kitchen/diner fitted with quality cabinetry, integrated appliances, and French doors that seamlessly connect to the low-maintenance rear garden. Upstairs, three well-proportioned bedrooms provide comfort and privacy, with the principal bedroom benefitting from an en-suite, complemented by a family bathroom. Outside, the property features easy-care front and rear gardens, gated access to the driveway, and a single garage, making it ideal for practical family living. Finished to a high standard throughout, this home truly must be seen to be fully appreciated.



M&B

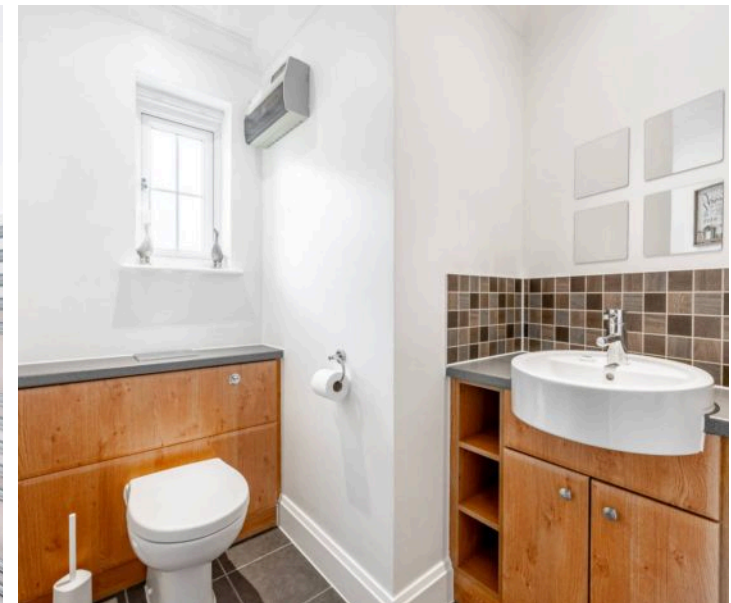
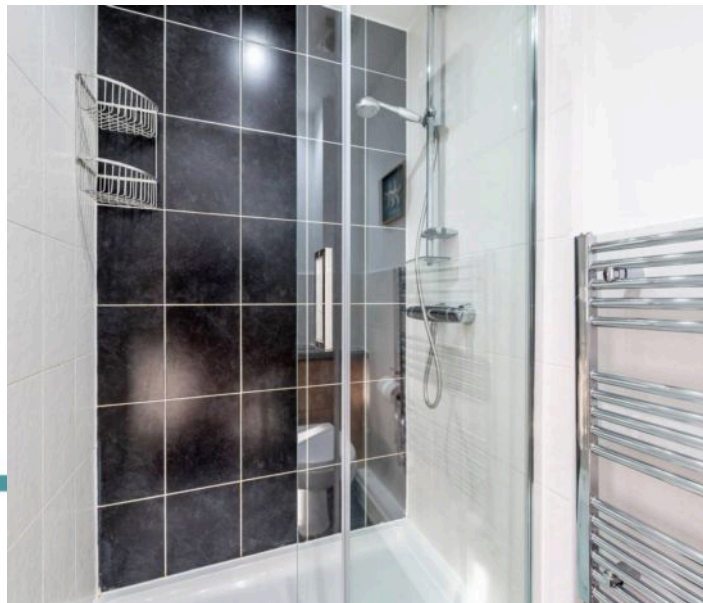
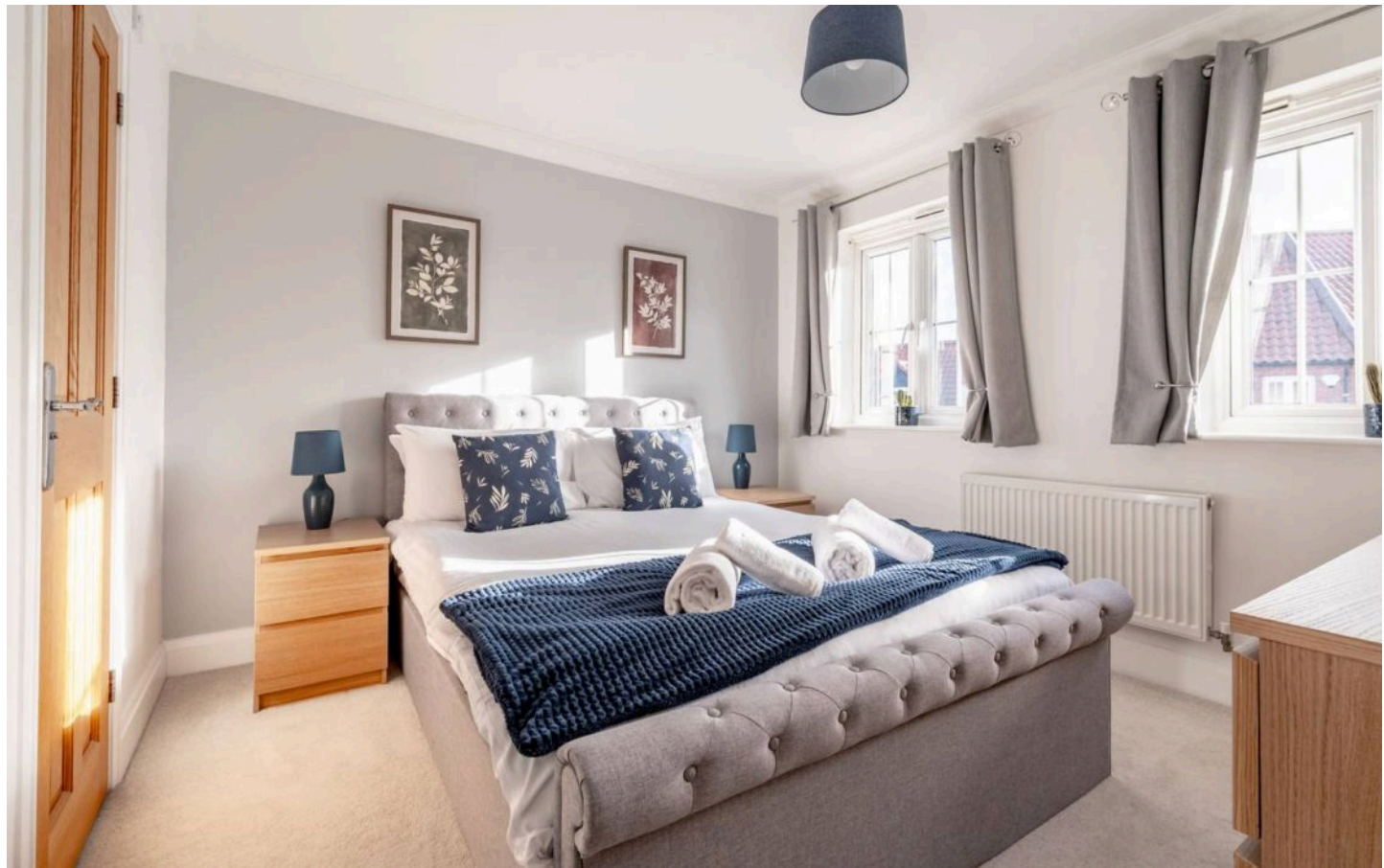


M&B

19 Stable Field Way

Hemsby, Great Yarmouth

- Three-bedroom mid-terraced home located in a highly sought-after area of Hemsby
- Family home that can easily adapt to your own preferences and style
- Spacious sitting room offering a bright and inviting space for both relaxation and entertaining family and friends
- Kitchen and dining area fitted with quality cabinetry, integrated oven, built-in fridge/freezer, and under-counter spaces for appliances
- French doors from the dining area creating a seamless flow to the rear garden, perfect for indoor-outdoor living and summer entertaining
- Principal bedroom with built-in storage and a private en-suite
- Two additional well-proportioned bedrooms offering comfort and flexibility for family, guests, or a home office
- Modern family bathroom with a stylish three-piece suite, combining practicality with a clean, contemporary finish
- Low-maintenance rear garden featuring a decked seating area and patio space with simple planting, ideal for outdoor dining or relaxing
- Gated access to driveway and single garage, offering practical parking and additional storage options



M&B

19 Stable Field Way

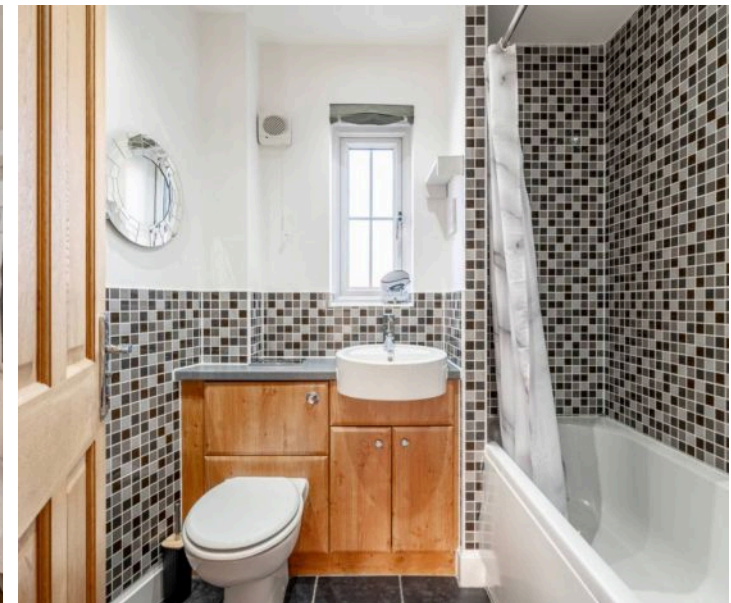
Hemsby, Great Yarmouth

Location

Stable Field Way is situated in the peaceful residential area of Hemsby, a coastal village on Norfolk's eastern seaboard. The road benefits from a quiet, community-focused setting while being only a short walk from the village's main street, where a handful of local shops, cafés, and takeaways provide everyday essentials. For families, Hemsby Primary School is within easy walking distance, while older children typically attend Flegg High Ormiston Academy, just a few miles away.

Transport connections are convenient for village life: local bus services link Hemsby with Great Yarmouth and surrounding villages, and the nearby A149 coast road provides straightforward access to Norwich, the Norfolk Broads, and other coastal towns. For those commuting by train, the closest station in Great Yarmouth is easily reachable by car or bus.

Life on Stable Field Way offers a balanced lifestyle. Residents enjoy the tranquillity of a small village environment, yet the sandy beaches and dunes of Hemsby are just a short stroll away, ideal for walks, cycling, or simply enjoying the coast. The combination of local amenities, accessible schools, and the natural charm of the Norfolk coastline makes this a location that blends everyday convenience with relaxed seaside living.



M&B

19 Stable Field Way

Hemsby, Great Yarmouth

The ground floor opens with a bright entrance hall leading to a spacious sitting room, an inviting space for relaxation and entertaining. To the rear, a contemporary kitchen/diner forms the heart of the home. The kitchen is equipped with quality cabinetry, an integrated oven, a built-in fridge/freezer and under-counter areas for your appliances. French doors sit just beyond the dining area, creating an effortless flow between the indoor and outdoor spaces and making the garden feel like a natural extension of the home. A convenient cloakroom completes the downstairs layout.

Upstairs, three well-designed bedrooms offer comfort and privacy, with the principal room enjoying its own en-suite and built-in storage. The family bathroom comprises a modern three-piece suite, bringing a calm and stylish finish to the first floor.

Outside, the rear garden is arranged for easy maintenance, featuring a decked seating area leading to further patio space bordered by simple planting. A rear gate provides direct access to the driveway and single garage. The front of the property is equally low maintenance, enhancing the home's kerb appeal.

Agents note

Freehold

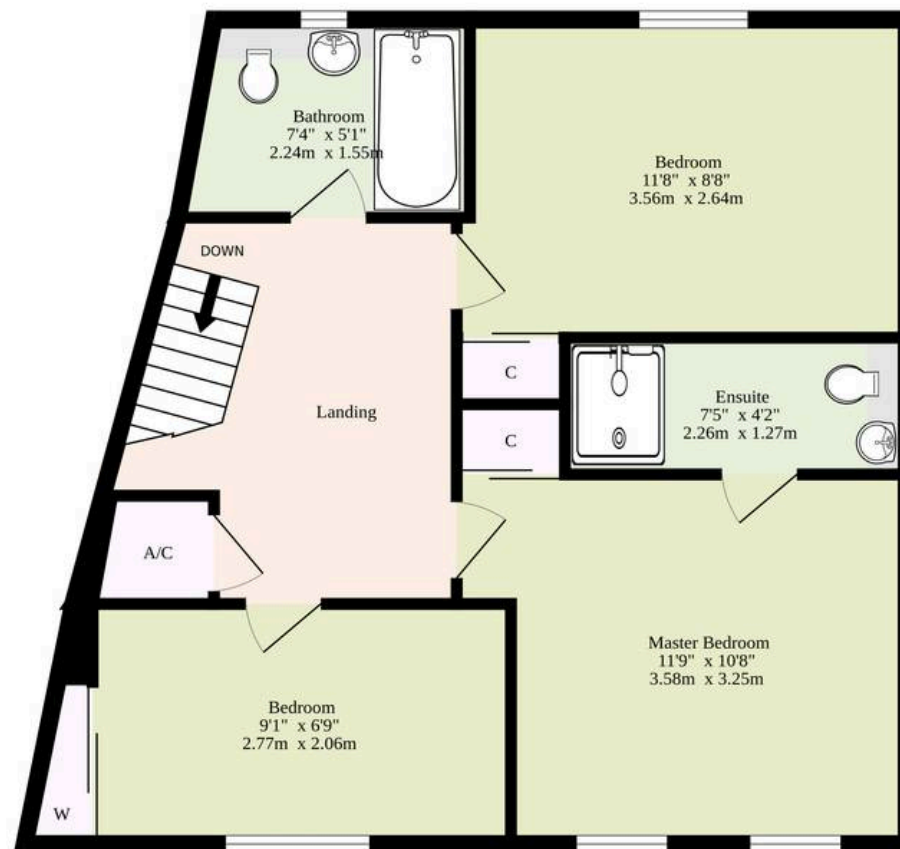


M&B

Ground Floor
433 sq.ft. (40.2 sq.m.) approx.



1st Floor
448 sq.ft. (41.6 sq.m.) approx.



TOTAL FLOOR AREA : 881 sq.ft. (81.8 sq.m.) approx.

Whilst every attempt has been made to ensure the accuracy of the floorplan contained here, measurements of doors, windows, rooms and any other items are approximate and no responsibility is taken for any error, omission or mis-statement. This plan is for illustrative purposes only and should be used as such by any prospective purchaser. The services, systems and appliances shown have not been tested and no guarantee as to their operability or efficiency can be given.
Made with Metropix ©2025

Dreaming of this home?

Let's make it a *reality*



Meet *Sarah*
Senior Property Consultant



Meet *James*
Property Consultant



Meet *Lauren*
Property Consultant

Minors & Brady

Your home, our market

 caister@minorsandbrady.co.uk

 01493 806188

 48 High Street, Caister-on-Sea, Great Yarmouth, NR30 5EH

CAISTER-ON-SEA | DEREHAM | DISS | NORWICH | OULTON BROAD | WROXHAM



How can we support

- ✓ Residential Mortgages
- ✓ Protection & Insurance
- ✓ Buy-to-let (personal and limited company)



Matt Waters
Senior Mortgage
and Protection Advisor



Victoria Payne
Mortgage and
Protection Advisor

Scan to book your
appointment today



T: 01692 531372
E: enquiries@norfolk-mortgages.co.uk