



320 Long Road, Lowestoft

Lowestoft



Guide Price £260,000  
Minors & Brady



# 320 Long Road

Lowestoft, Lowestoft

Guide price £260,000-£270,000 A home designed for modern, comfortable living awaits in this semi-detached residence set in a quiet Lowestoft location. The bay-fronted, open-plan kitchen and dining area flows seamlessly into a light-filled living room, perfect for everyday life and entertaining. Four versatile bedrooms offer space for family, a home office, or a dressing room, complemented by a ground-floor bathroom with a freestanding bath and a practical utility room. Outside, a private garden features a decked terrace, lawn, garden kitchen, and shed, creating an ideal space for relaxing, dining, or growing your own produce. With a low-maintenance front garden, gated access, on-road parking, and a double garage, this home combines style, flexibility, and practicality for comfortable living.

- Guide price £260,000-£270,000
- Semi-detached residence positioned in a quiet location, within the coastal town of Lowestoft
- Open-plan bay-fronted kitchen/dining room creating an effortless flow for everyday living and occasional gatherings
- Kitchen equipped with black cabinetry, a Rangemaster oven, a Butler sink, a dishwasher and space for a tall fridge/freezer
- Spacious living room filled with natural light, inviting relaxation and entertaining
- Functional utility room your laundry appliances and additional storage
- Ground-floor family bathroom comprising of a four-piece suite, including a freestanding bathtub, an enclosed shower, a hand wash basin and a WC
- Four bedrooms offering comfort and privacy, with the flexibility to have a home office, a dressing room or a nursery
- An extensive, private garden featuring a decked terrace/patio for seating arrangements, a laid to lawn, a







M&B



# 320 Long Road

Lowestoft, Lowestoft

Council Tax band: B

Tenure: Freehold

EPC Energy Efficiency Rating: D

EPC Environmental Impact Rating:



M&B



# 320 Long Road

Lowestoft, Lowestoft

Guide price £260,000-£270,000

A home designed for modern, comfortable living awaits in this semi-detached residence set in a quiet Lowestoft location. The bay-fronted, open-plan kitchen and dining area flows seamlessly into a light-filled living room, perfect for everyday life and entertaining. Four versatile bedrooms offer space for family, a home office, or a dressing room, complemented by a ground-floor bathroom with a freestanding bath and a practical utility room. Outside, a private garden features a decked terrace, lawn, garden kitchen, and shed, creating an ideal space for relaxing, dining, or growing your own produce. With a low-maintenance front garden, gated access, on-road parking, and a double garage, this home combines style, flexibility, and practicality for comfortable living.

## Location

Long Road is situated in a residential area of Lowestoft, a coastal town in Suffolk known for its seafront and maritime heritage. Within a short distance, residents can access everyday shopping needs at convenience stores, small independent shops, cafés, and local takeaways. Larger supermarkets and retail options are available nearby in Pakefield and Carlton Colville.

For families, schooling options are within easy reach. Pakefield Primary School and Carlton Colville Primary School are nearby for younger children, while older students can attend Pakefield High School or East Point Academy, providing a range of educational choices.

Transport links are practical for both local and regional travel. Several bus routes run through the area, connecting Long Road to Lowestoft town centre, surrounding neighborhoods, and the seafront. The nearest railway stations, Oulton Broad South and Lowestoft, offer rail services to Norwich, Ipswich, and further afield. By car, the A12 and A47 provide convenient

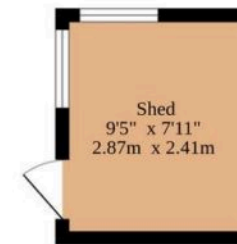
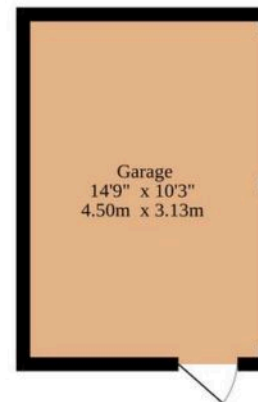
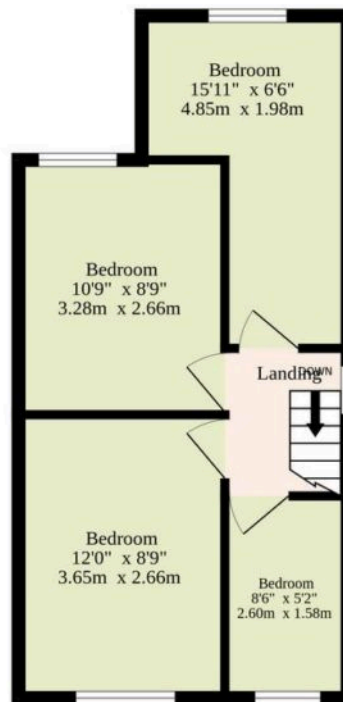
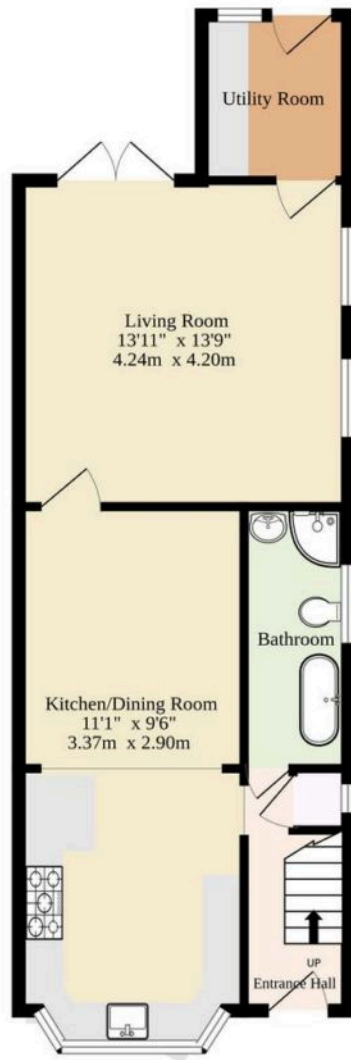




Ground Floor  
1060 sq.ft. (98.5 sq.m.) approx.

1st Floor  
391 sq.ft. (36.3 sq.m.) approx.

Outbuildings  
226 sq.ft. (21.0 sq.m.) approx.



Total Sqft Includes The Garage And Shed

TOTAL FLOOR AREA : 1677 sq.ft. (155.8 sq.m.) approx.

Whilst every attempt has been made to ensure the accuracy of the floorplan contained here, measurements of doors, windows, rooms and any other items are approximate and no responsibility is taken for any error, omission or mis-statement. This plan is for illustrative purposes only and should be used as such by any prospective purchaser. The services, systems and appliances shown have not been tested and no guarantee as to their operability or efficiency can be given.

Made with Metropix ©2025

# Dreaming of this home?

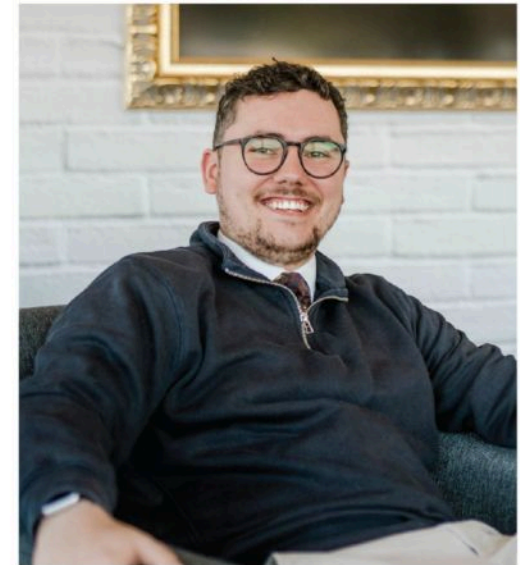
## Let's make it a *reality*



Meet *Macey*  
Branch Manager



Meet *Bradley*  
Senior Property Valuer



Meet *Ollee*  
Senior Property Consultant

# Minors & Brady

*Your home, our market*



oultonbroad@minorsandbrady.co.uk



01502 447788



Ivy Lane, Oulton Broad, NR33 8QH

CAISTER-ON-SEA | DEREHAM | DISS | LETTINGS | NORWICH | OULTON BROAD | WROXHAM



## How can we support

- ✓ Residential Mortgages
- ✓ Protection & Insurance
- ✓ Buy-to-let (personal and limited company)



**Matt Waters**  
Senior Mortgage  
and Protection Advisor



**Victoria Payne**  
Mortgage and  
Protection Advisor

Scan to book your  
appointment today



T: 01692 531372  
E: [enquiries@norfolk-mortgages.co.uk](mailto:enquiries@norfolk-mortgages.co.uk)