



4 Moat Lane, New Buckenham

Norwich



Minors & Brady

4 Moat Lane

Set within the highly regarded village of New Buckenham, this well-presented two-bedroom bungalow enjoys a tucked-away position with attractive open field views. The property offers peaceful village living while remaining conveniently placed for local amenities and countryside walks. Inside, the accommodation is thoughtfully arranged for comfortable single-storey living, ideal for a range of buyers. A bright, double-aspect open-plan living and dining room forms the heart of the home, filled with natural light and enjoying the outlook over surrounding fields. The kitchen is neatly positioned within its own nook, providing a practical yet well-connected space. Two generous double bedrooms and a modern bathroom complete the internal layout. Externally, the bungalow benefits from a private, low-maintenance garden, along with a driveway and garage, making it a complete and appealing village home.

- Situated within the highly regarded and historic village of New Buckenham, known for its strong community and attractive surroundings
- Enjoying a peaceful and private position, tucked away from passing traffic and ideal for relaxed village living
- Benefitting from attractive open field views, enhancing the sense of space and tranquillity both inside and out
- A well-presented two-bedroom bungalow offering comfortable and practical single-storey accommodation
- A generous, light-filled open-plan living and dining room with a double aspect, ideal for everyday living and entertaining
- A neatly defined kitchen area, well laid out with good storage and worktop space while remaining subtly connected to the main living space
- Two spacious double bedrooms





M&B

4 Moat Lane

New Buckenham, Norwich

The Location

New Buckenham is a traditional Norfolk village set among open countryside, with a clear sense of history and a slower pace of life. The village has a distinctive character, shaped by its old buildings, narrow streets, and long-established layout. Many of the houses reflect its past, and features like the remains of the medieval castle sit quietly within the landscape rather than as formal attractions.

Life in New Buckenham is largely shaped by its rural surroundings. Fields and farmland border the village, and the area feels calm and settled, with limited traffic once you are off the main roads. Despite this, it does not feel cut off. Nearby villages and towns are easy to reach for everyday needs, while the countryside remains a constant presence.

Banham is a short drive away and is known locally for Banham Zoo, while Attleborough offers more extensive shops, services, and a railway station for travel further afield. This balance makes New Buckenham suitable for those who prefer a quieter setting but still want practical access to surrounding areas.

M&B



4 Moat Lane

New Buckenham, Norwich

Moat Lane, New Buckenham

Tucked away in a private setting within the highly regarded village of New Buckenham, this well-presented two bedroom bungalow offers comfortable, single-storey living with the benefit of a driveway and garage.

The property enjoys a peaceful position while remaining conveniently placed for village amenities and countryside walks, making it an ideal home for those seeking a quieter village lifestyle.

The accommodation begins with a welcoming entrance hall, providing useful circulation. From here, the space opens into a generous open-plan living and dining room, a bright and airy area that benefits from a double aspect outlook. Large windows allow plenty of natural light to flow through the room while also taking advantage of pleasant field views, creating a calm and inviting main living space suitable for both everyday living and entertaining.

Leading naturally from the living area is a kitchen space neatly tucked away via a defined nook, offering separation while remaining connected to the heart of the home. The kitchen is a good size and well laid out, featuring ample storage, worktop space, an induction hob, and a modern oven, making it practical for regular use without feeling exposed to the main living area.



M&B

4 Moat Lane

New Buckenham, Norwich

The bungalow offers two well-proportioned double bedrooms, both comfortably accommodating bedroom furniture and enjoying a quiet outlook. These rooms are served by a modern three-piece bathroom, finished in a clean, contemporary style and designed with everyday comfort in mind.

Externally, the property continues to impress with an enclosed, low-maintenance garden, ideal for those who want outdoor space without extensive upkeep. The garden provides a private area to relax, while the driveway and garage offer valuable off-road parking and additional storage. The interior of the home has been recently refreshed, allowing a new owner to move straight in and enjoy the space as it stands.

Overall, this bungalow combines village charm, open countryside views, and practical living, all within a well-maintained and thoughtfully arranged home in one of Norfolk's most desirable village locations.

Agents Note

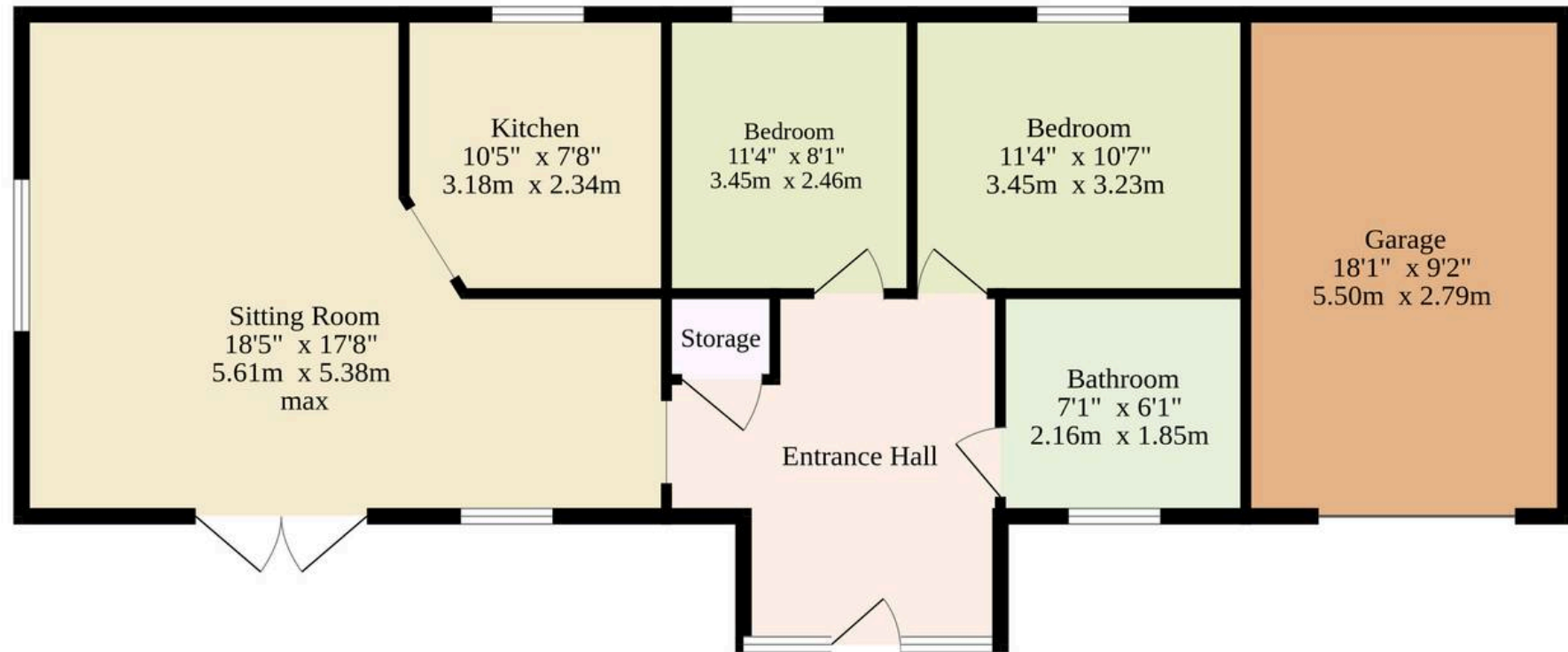
Sold Freehold

Connected to mains waterm electricity and drainage.



M&B

Ground Floor
958 sq.ft. (89.0 sq.m.) approx.



Including Garage

TOTAL FLOOR AREA : 958 sq.ft. (89.0 sq.m.) approx.

Whilst every attempt has been made to ensure the accuracy of the floorplan contained here, measurements of doors, windows, rooms and any other items are approximate and no responsibility is taken for any error, omission or mis-statement. This plan is for illustrative purposes only and should be used as such by any prospective purchaser. The services, systems and appliances shown have not been tested and no guarantee as to their operability or efficiency can be given.

Made with Metropix ©2025

Dreaming of this home? Let's make it a reality



Meet *Nicola*
Branch Manager



Meet *Theo*
Property Consultant



Meet *Anya*
Aftersales Progressor

Minors & Brady
Your home, our market

 diss@minorsandbrady.co.uk

 01379 771444

 46-47 Mere Street, Diss, IP22 4AG

CAISTER-ON-SEA | DEREHAM | DISS | NORWICH | OULTON BROAD | WROXHAM



How can we support

- ✓ Residential Mortgages
- ✓ Protection & Insurance
- ✓ Buy-to-let (personal and limited company)



Matt Waters
Senior Mortgage
and Protection Advisor



Victoria Payne
Mortgage and
Protection Advisor

Scan to book your
appointment today



T: 01692 531372
E: enquiries@norfolk-mortgages.co.uk