



Flat 38, Quintin Gurney House Keswick Hall, Keswick

Norwich



Minors & Brady

Located within the sought-after Quintin Gurney House on Keswick Hall Estate, this bright 2-bedroom flat offers a peaceful setting while remaining close to Norwich city centre. The open-plan living space features a modern, neutral kitchen and a lounge/diner filled with natural light, creating a versatile environment for everyday living and entertaining. Both double bedrooms are comfortable and practical, complemented by a contemporary shower room with sleek fittings. Residents enjoy exclusive access to estate amenities, including a swimming pool, five tennis courts, beautifully maintained grounds, and a BBQ area. Additional conveniences include secure bike storage and a screened clothes-drying area, enhancing low-maintenance living. The flat benefits from a 147-year lease and excellent transport links, with a bus route providing easy access to local shops, cafés, and Norwich's cultural highlights. Ideal for first-time buyers, downsizers, or investors, this property combines historic charm with modern comfort in a well-connected, welcoming neighbourhood.

- Situated within the prestigious Quintin Gurney House on Keswick Hall Estate, offering a peaceful setting while close to Norwich city centre
- Bright and airy lounge/diner with large windows that fill the space with natural light, ideal for everyday living and entertaining
- Modern, neutral kitchen thoughtfully designed for practicality and social cooking
- Two comfortable double bedrooms, versatile for family, guests, or a home office
- Contemporary shower room with sleek fittings, combining style and functionality
- Exclusive access to a swimming pool, five tennis courts, and beautifully maintained grounds with scenic views
- Outdoor spaces including a BBQ area and landscaped gardens, perfect for gatherings and relaxation
- 147-year lease with a bus route nearby



M&B



M&B

Flat 38

Quintin Gurney House Keswick Hall, Norwich

The Location

Positioned within the sought-after Quintin Gurney House, this home offers a peaceful setting while remaining just a short journey from Norwich city centre. The neighbourhood combines the appeal of a quiet, leafy setting, with local shops, cafés, and everyday amenities easily accessible by car or bus. It is also just a short drive from Harford Bridge, where residents can enjoy a variety of retail parks for shopping and leisure.

Families and residents enjoy excellent schooling options, nearby recreational facilities, and inviting green spaces perfect for leisurely walks or weekend relaxation.

For commuters, the area benefits from easy access to the A11 and A47, along with reliable public transport links into the city, making travel simple and efficient. Those who appreciate a balanced lifestyle will also enjoy parks, sports facilities, shopping, and Norwich's cultural highlights, including theatres, restaurants, and historic landmarks, all reachable by a short drive or bus journey.

With its mix of peaceful surroundings, connectivity, and community atmosphere, Quintin Gurney House is ideal for families, professionals, or anyone seeking a comfortable home in a well-connected, welcoming neighbourhood.



Flat 38

Quintin Gurney House Keswick Hall, Norwich

Quintin Gurney House, Keswick

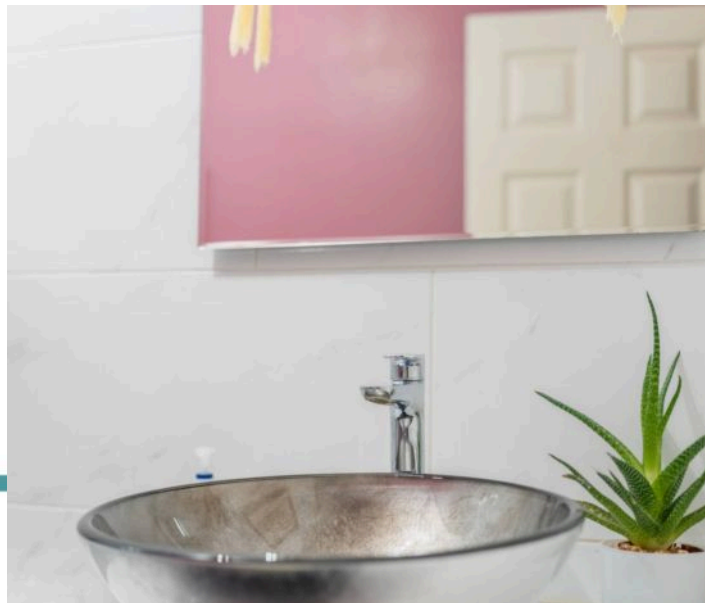
This bright and airy 2-bedroom flat offers a thoughtfully designed, open-plan living space, complete with a modern, neutral kitchen that seamlessly blends style and practicality. The layout creates a versatile environment, perfect for both everyday living and entertaining guests.

The lounge/diner is filled with natural light from generously sized windows, providing a welcoming and comfortable atmosphere. The contemporary kitchen is well-equipped and conveniently located adjacent to the living/dining area, making meal preparation and socialising effortless.

Both double bedrooms feature fitted carpets and offer comfort and practicality. The modern shower room is elegantly appointed with contemporary fittings, providing a sleek and functional space.

Residents of Keswick Hall Estate benefit from exclusive access to a wealth of amenities, including a swimming pool, five tennis courts, and beautifully maintained grounds with scenic views across surrounding fields.

Additional facilities include a BBQ area for social gatherings and secure bike storage with a screened area for drying clothes.



Flat 38

Quintin Gurney House Keswick Hall, Norwich

This property presents an excellent opportunity for first-time buyers, downsizers, or investors seeking a low-maintenance home that combines character and charm.

The flat comes with a 147-year lease and enjoys a convenient location on a bus route, ensuring easy access to local amenities and surrounding areas. Set within the prestigious Keswick Hall Estate, this apartment perfectly balances historic charm with contemporary living.

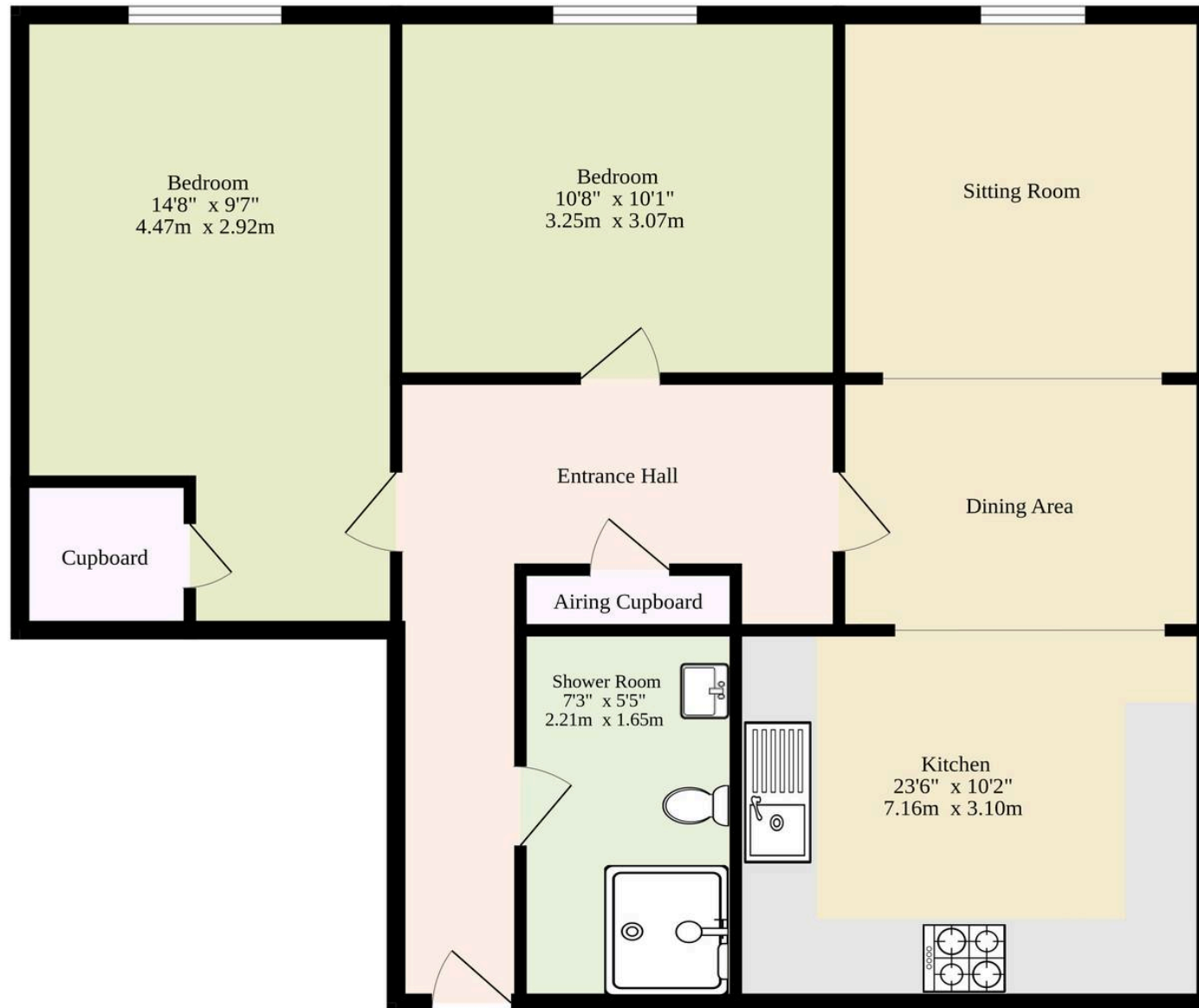
Agents Note

This property will be sold leasehold, with 147 years remaining on the lease.

Ground rent & maintenance come to a total of £200 pcm.



667 sq.ft. (62.0 sq.m.) approx.



TOTAL FLOOR AREA : 667 sq.ft. (62.0 sq.m.) approx.

Whilst every attempt has been made to ensure the accuracy of the floorplan contained here, measurements of doors, windows, rooms and any other items are approximate and no responsibility is taken for any error, omission or mis-statement. This plan is for illustrative purposes only and should be used as such by any prospective purchaser. The services, systems and appliances shown have not been tested and no guarantee as to their operability or efficiency can be given.
Made with Metropix ©2026

Dreaming of this home?

Let's make it a *reality*



Meet *Liam*
Branch Manager



Meet *Rosie*
Senior Sales Progressor




Meet *Tristan*
Senior Property Valuer

Minors & Brady

Your home, our market

 norwich@minorsandbrady.co.uk

 01603 365085

 107 Unthank Road, Norwich, NR2 2PE

CAISTER-ON-SEA | DEREHAM | DISS | NORWICH | OULTON BROAD | WROXHAM



How can we support

- ✓ Residential Mortgages
- ✓ Protection & Insurance
- ✓ Buy-to-let (personal and limited company)



Matt Waters
Senior Mortgage
and Protection Advisor



Victoria Payne
Mortgage and
Protection Advisor

Scan to book your
appointment today



T: 01692 531372
E: enquiries@norfolk-mortgages.co.uk