



Plot 32, The Fields, Bacton

Bacton



£445,000  
Minors & Brady

# Plot 32, The Fields

## Bacton

Forming part of the complete Fields development by Flagship Homes, this modern detached three-bedroom bungalow offers spacious single-level accommodation within a low-density layout of just eight homes per acre. With the majority of homes already sold, plot 32 presents a strong opportunity to secure one of the final examples of this house type. Positioned within the well-regarded village of Bacton, The Fields provides a setting that appeals to a wide range of buyers, including downsizers, families, and those seeking a quieter pace of life. The village benefits from a strong community spirit, hosting events throughout the year and offering a welcoming atmosphere, while the surrounding countryside provides open space and a sense of connection to the rural landscape.

- Modern detached three bedroom bungalow offering approximately 1000 sqft of single level accommodation
- NHBC 10 year warranty from build completion date, located within a build complete development set in the heart of the Suffolk countryside
- Fully integrated Symphony Harvard kitchen in a Platinum finish with Cinnamon premium laminate worktops and upstands
- Integrated AEG appliances including oven, hob, dishwasher, fridge freezer, and washing machine
- Spacious open plan kitchen, dining, and living room measuring over 30ft, with double doors opening directly to the garden
- Principal bedroom featuring a fitted wardrobe and ensuite shower room
- Family bathroom and ensuite fitted with Roca sanitaryware, Porcelanosa Botega Caliza wall tiling, and Amtico Pampas flooring
- Energy efficient air source heat pump system by Vaillant with underfloor heating throughout the ground floor





M&B

# Plot 32, The Fields

Bacton

Council Tax band: TBD

Tenure: Freehold



# Plot 32, The Fields

## Bacton

Forming part of the complete Fields development by Flagship Homes, this modern detached three-bedroom bungalow offers spacious single-level accommodation within a low-density layout of just eight homes per acre. With the majority of homes already sold, plot 32 presents a strong opportunity to secure one of the final examples of this house type. Positioned within the well-regarded village of Bacton, The Fields provides a setting that appeals to a wide range of buyers, including downsizers, families, and those seeking a quieter pace of life. The village benefits from a strong community spirit, hosting events throughout the year and offering a welcoming atmosphere, while the surrounding countryside provides open space and a sense of connection to the rural landscape.

## Location

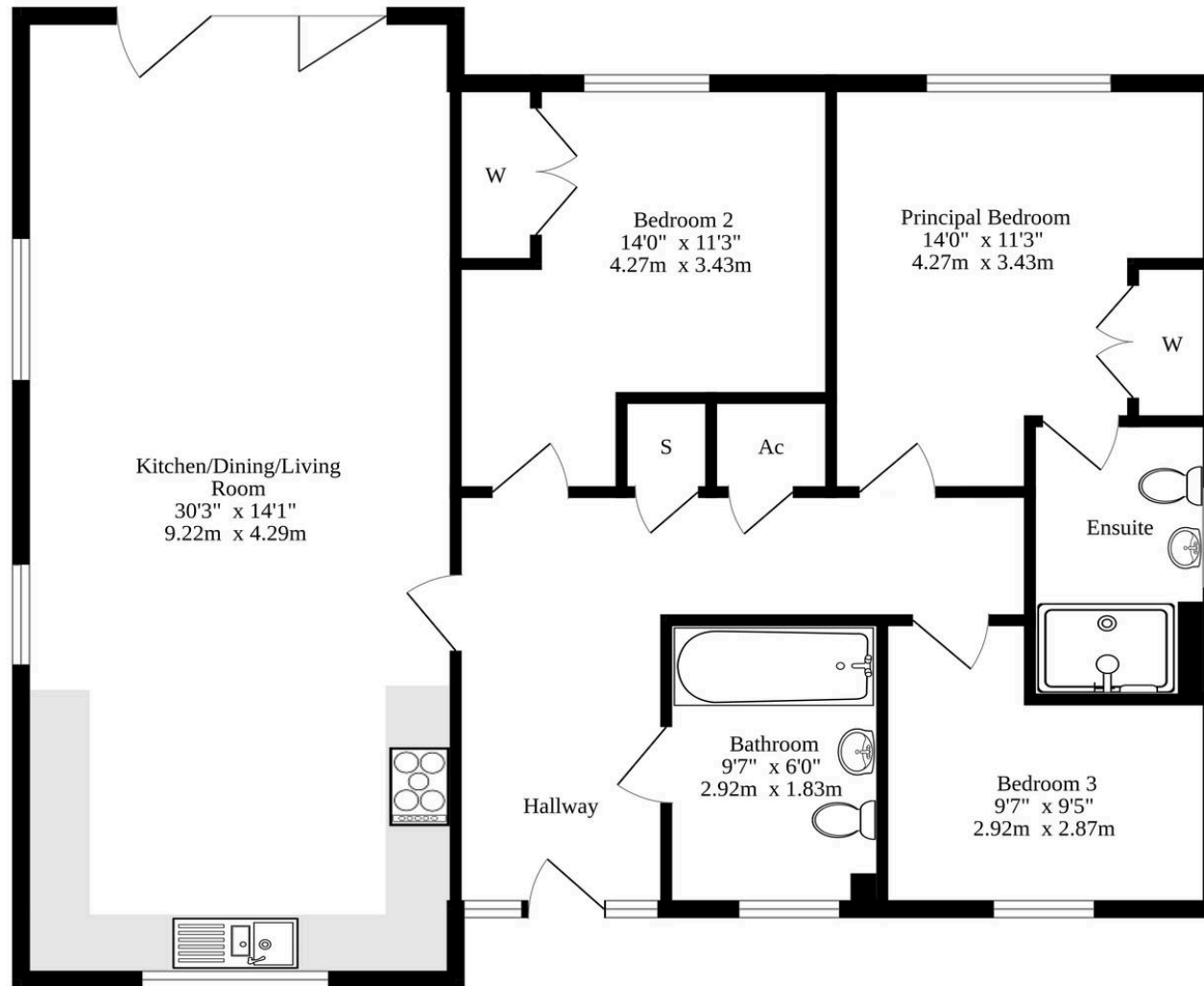
The Fields is positioned along Turkey Hall Lane within the established village of Bacton, an area recognised for its community spirit and relaxed rural setting. The village supports day-to-day living with a primary school, village hall, church, and local facilities, while regular events throughout the year create a welcoming and sociable atmosphere. Surrounded by open countryside, the area offers excellent opportunities for walking, cycling, and enjoying Suffolk's landscapes, with quiet lanes and public footpaths close by.

The nearby market town of Stowmarket provides a wider selection of supermarkets, independent shops, cafes, and leisure facilities, along with a mainline railway station offering direct services to Ipswich, Norwich, and London Liverpool Street. Road links are also convenient, with access to the A14 connecting easily to the wider region. This setting suits those looking for a village lifestyle with strong connections to surrounding towns and transport routes.

## The Fields



**Ground Floor**  
**1033 sq.ft. (96.0 sq.m.) approx.**



**TOTAL FLOOR AREA : 1033 sq.ft. (96.0 sq.m.) approx.**

Whilst every attempt has been made to ensure the accuracy of the floorplan contained here, measurements of doors, windows, rooms and any other items are approximate and no responsibility is taken for any error, omission or mis-statement. This plan is for illustrative purposes only and should be used as such by any prospective purchaser. The services, systems and appliances shown have not been tested and no guarantee as to their operability or efficiency can be given.  
Made with Metropix ©2025

# Dreaming of this home? Let's make it a reality



Meet *Nicola*  
Branch Manager




Meet *Theo*  
Property Consultant



Meet *Anya*  
Aftersales Progressor

Minors & Brady  
*Your home, our market*

 [diss@minorsandbrady.co.uk](mailto:diss@minorsandbrady.co.uk)

 01379 771444

 46-47 Mere Street, Diss, IP22 4AG

CAISTER-ON-SEA | DEREHAM | DISS | NORWICH | OULTON BROAD | WROXHAM



## How can we support

- ✓ Residential Mortgages
- ✓ Protection & Insurance
- ✓ Buy-to-let (personal and limited company)



**Matt Waters**  
Director and  
Principal



**Victoria Payne**  
Mortgage and  
Protection Advisor

Offering you quick and professional mortgage advice every step of the way.

T: 01603 210378  
E: [enquiries@norfolk-mortgages.co.uk](mailto:enquiries@norfolk-mortgages.co.uk)