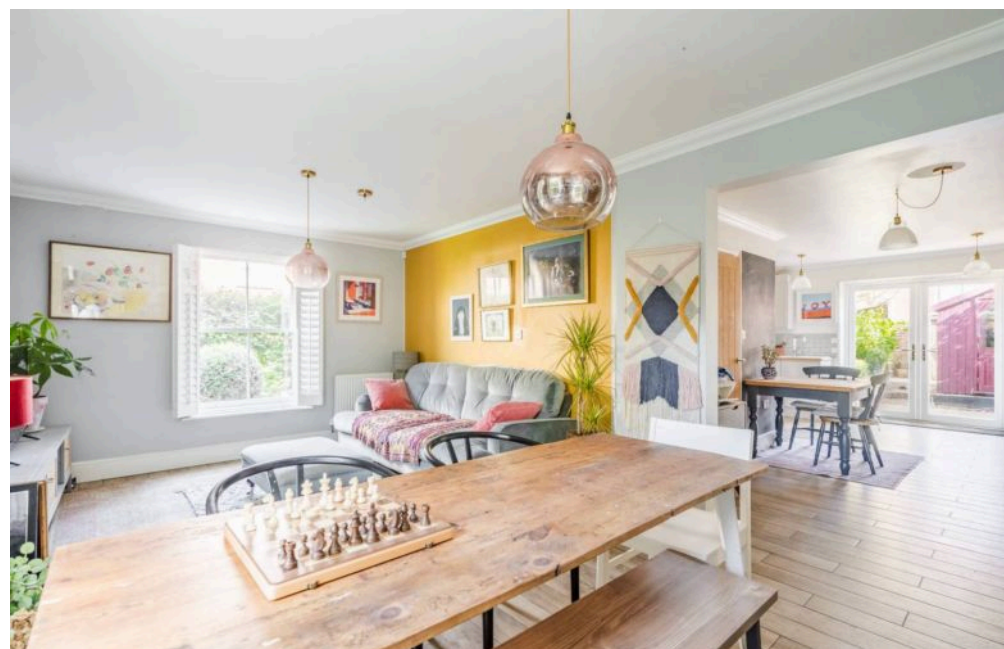


Step through the mature hedging and along the central walkway, and you're welcomed into a home that balances space, style and soul. This beautifully appointed family residence in Aylsham unfolds across three light-filled floors, offering four bedrooms, three bathrooms and generous open-plan living designed for both ease and elegance. The heart of the home flows seamlessly — with sociable spaces to gather, unwind or entertain — all set against a backdrop of warm character and thoughtful details. A courtyard garden sits peacefully to the rear, with a wooden pergola and mature planting creating a lovely spot to slow down and enjoy the outdoors. Practical touches like a utility room, garage and multiple parking options complement the relaxed feel of the home.

The Location

St Michael's Avenue presents a well-regarded and quietly confident residential setting right in the centre of Aylsham — a place where practical living meets understated charm. Perfectly aligned for both families and professionals, this desirable address offers seamless access to Norwich and neighbouring areas thanks



Step through the mature hedging and along the central walkway, and you're welcomed into a home that balances space, style and soul. This beautifully appointed family residence in Aylsham unfolds across three light-filled floors, offering four bedrooms, three bathrooms and generous open-plan living designed for both ease and elegance. The heart of the home flows seamlessly — with sociable spaces to gather, unwind or entertain — all set against a backdrop of warm character and thoughtful details. A courtyard garden sits peacefully to the rear, with a wooden pergola and mature planting creating a lovely spot to slow down and



Step through the mature hedging and along the central walkway, and you're welcomed into a home that balances space, style and soul. This beautifully appointed family residence in Aylsham unfolds across three light-filled floors, offering four bedrooms, three bathrooms and generous open-plan living designed for both ease and elegance. The heart of the home flows seamlessly — with sociable spaces to gather, unwind or entertain — all set against a backdrop of warm character and thoughtful details. A courtyard garden sits peacefully to the rear, with a wooden pergola and mature planting creating a lovely spot to slow down and enjoy the outdoors. Practical touches like a utility room, garage and multiple parking options complement the relaxed feel of the home.

The Location

St Michael's Avenue presents a well-regarded and quietly confident residential setting right in the centre of Aylsham — a place where practical living meets understated charm. Perfectly aligned for both families and professionals, this desirable address offers seamless access to Norwich and neighbouring areas thanks to regular, reliable bus services. The location also falls within the catchment of sought-after local schools, which only adds to its appeal for those prioritising education and community in equal measure.

Beyond the doorstep, Aylsham rewards residents with a wealth of character. The much-loved Bure Valley Railway lies just a stroll away, offering scenic steam train adventures through the countryside — a nostalgic yet surprisingly convenient escape. For lovers of the outdoors, Marriotts Way and Green Lanes are just minutes away and offer miles of picturesque walking and cycling routes, making them a real draw for dog owners and weekend explorers alike.

The town itself delivers a strong line-up of independent eateries and familiar names, offering something for every occasion. Whether it's a fresh croissant from Bread Source, a leisurely lunch at Biddy's Kitchen, or a classic pub meal at the historic Black Boys Hotel, the local food scene is full of variety. And for that everyday caffeine fix, there's the ease of a nearby Starbucks just around the corner.

St. Michaels Avenue, Aylsham

Commanding from first glance, this striking family home in Aylsham blends bold architectural lines with charming maturity, setting an impressive tone before you've even reached the front door. Mature hedging frames the exterior beautifully, drawing you into a central walkway that leads to a broad, welcoming entrance.

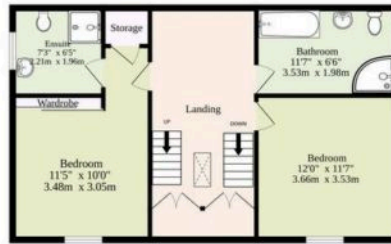
Inside, you're met with an abundance of space, thoughtful design and just the right amount of personality. The hallway opens into



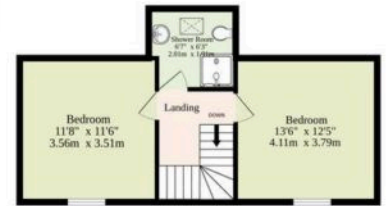
Ground Floor
770 sq.ft. (71.5 sq.m.) approx.



1st Floor
309 sq.ft. (28.7 sq.m.) approx.



2nd Floor
369 sq.ft. (34.3 sq.m.) approx.



TOTAL FLOOR AREA : 1448 sq.ft. (134.5 sq.m.) approx.

Whilst every attempt has been made to ensure the accuracy of the floorplan contained here, measurements of doors, windows, rooms and any other items are approximate and no responsibility is taken for any error, omission or mis-statement. This plan is for illustrative purposes only and should be used as such by any prospective purchaser. The services, systems and appliances shown have not been tested and no guarantee as to their operability or efficiency can be given.
Made with Metropix ©2025

You can include any text here. The text can be modified upon generating your brochure.

You can include any text here. The text can be modified upon generating your brochure.

