



Woodland View 24, Abi Kingston, Broadland Sands Holiday Park, Coast Road

Lowestoft

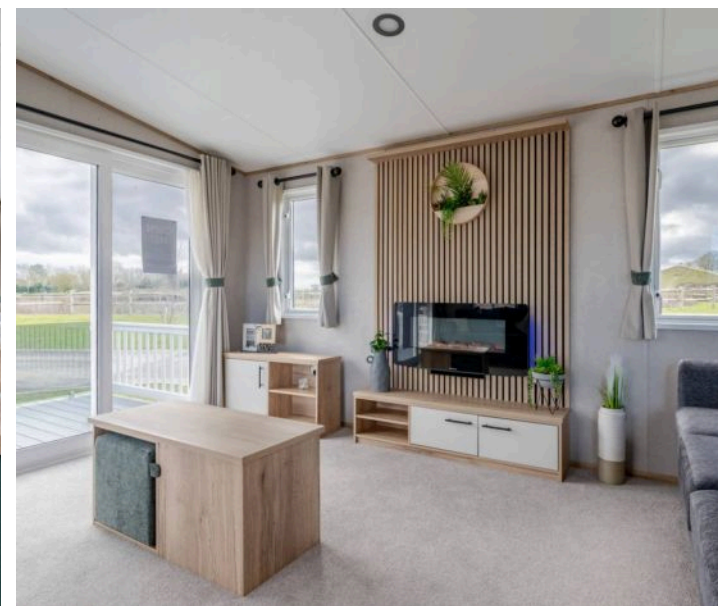


Woodland View 24, Abi Kingston, Broadland Sands Holiday Park

Coast Road, Lowestoft

Step into a brand-new luxury holiday home on Broadland Sands Holiday Park in Suffolk, just moments from the coast. Light-filled and thoughtfully designed, it features an open-plan kitchen, dining, and living area opening onto a decked terrace, alongside two comfortable bedrooms, including a principal with private en-suite. On-site facilities such as an indoor pool, restaurant, adventure golf, and mini-mart make every stay easy and enjoyable, while nearby beaches and coastal walks provide the perfect backdrop for summer days or relaxing breaks. With extra insulation and off-road parking, this home offers a stylish, convenient base for making the most of Suffolk's coast.

- Brand-new model!
- Luxury holiday home positioned on the esteemed Broadland Sands Holiday Park in Suffolk
- Fantastic range of on-site facilities including an indoor pool, restaurant, adventure golf, mini mart shop and much more!
- A stones throw away from the coast, offering a beautiful setting for walks and summer days by the sea
- Open-plan kitchen, dining and living area with sliding doors that open out to the decked terrace
- Fully-fitted kitchen with quality cabinetry, integrated appliances and furnishings
- Two bedrooms, one principal with built-in storage and a private en-suite, and another with twin beds for children or guests
- Shower room comprising of a modern three-piece suite
- Off-road parking
- Extra insulation



M&B



M&B

Woodland View 24, Abi Kingston, Broadland Sands Holiday Park

Coast Road, Lowestoft

Broadland Sands Holiday Park

Escape to the Broadland Sands holiday park for an unforgettable summer vacation! With a wealth of fantastic facilities, ensuring a delightful experience for all guests. Dive into excitement at the indoor pool with its thrilling 45-meter flume and paddling pool for little ones. Embark on a roarsome adventure with the dinosaur-themed golf course, promising laughter and friendly competition. Be captivated by the family entertainment venue, offering a medley of shows and activities. Unwind at the sports bar and lounge, savouring the relaxed atmosphere and catching up on live sports. Indulge your taste buds at the restaurant or grab a quick bite from the takeaway facilities. Broadland Sands holiday park is the ultimate summer destination, catering to all ages with its diverse array of amenities and ensuring cherished memories for years to come.

Agents Notes

Leasehold, with 29 years left on the lease.

Ground rent: £6,975 p/a.

Management company: Park Holidays

Size: 40 x 14

Built in 2025

Combi boiler.



M&B

Woodland View 24, Abi Kingston, Broadland Sands Holiday Park

Coast Road, Lowestoft

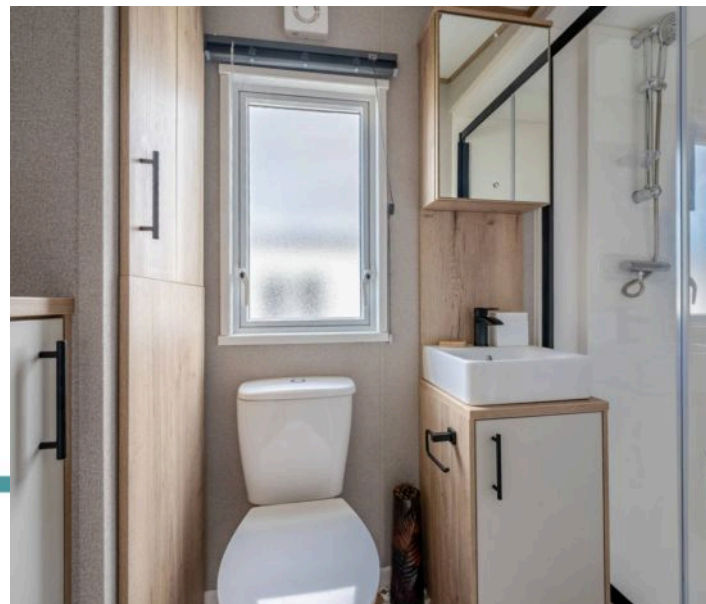
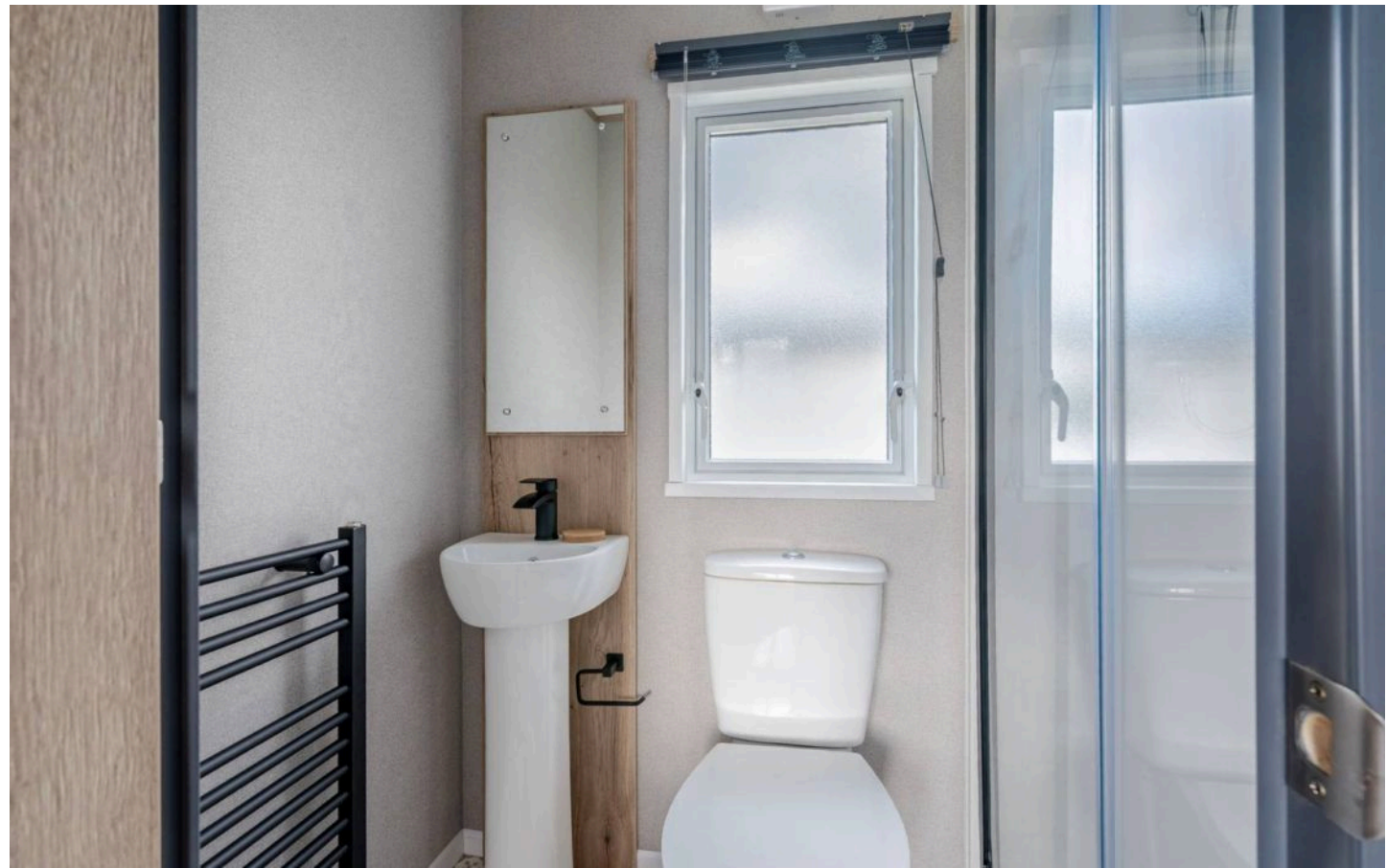
This brand-new luxury holiday home is located on the sought-after Broadland Sands Holiday Park in Suffolk, just a short walk from the beautiful coastline. It's an ideal setting for coastal walks, summer days by the sea, and quality time with family or friends.

The home features extra insulation and an open-plan kitchen, dining, and living area with sliding doors that open onto a decked terrace, perfect for relaxing or entertaining. The fully-fitted kitchen includes high-quality cabinetry, integrated appliances, and stylish furnishings.

There are two bedrooms, including a principal bedroom with built-in storage and a private en-suite, and a second bedroom with twin beds, suitable for children or guests. A modern shower room with a three-piece suite completes the layout.

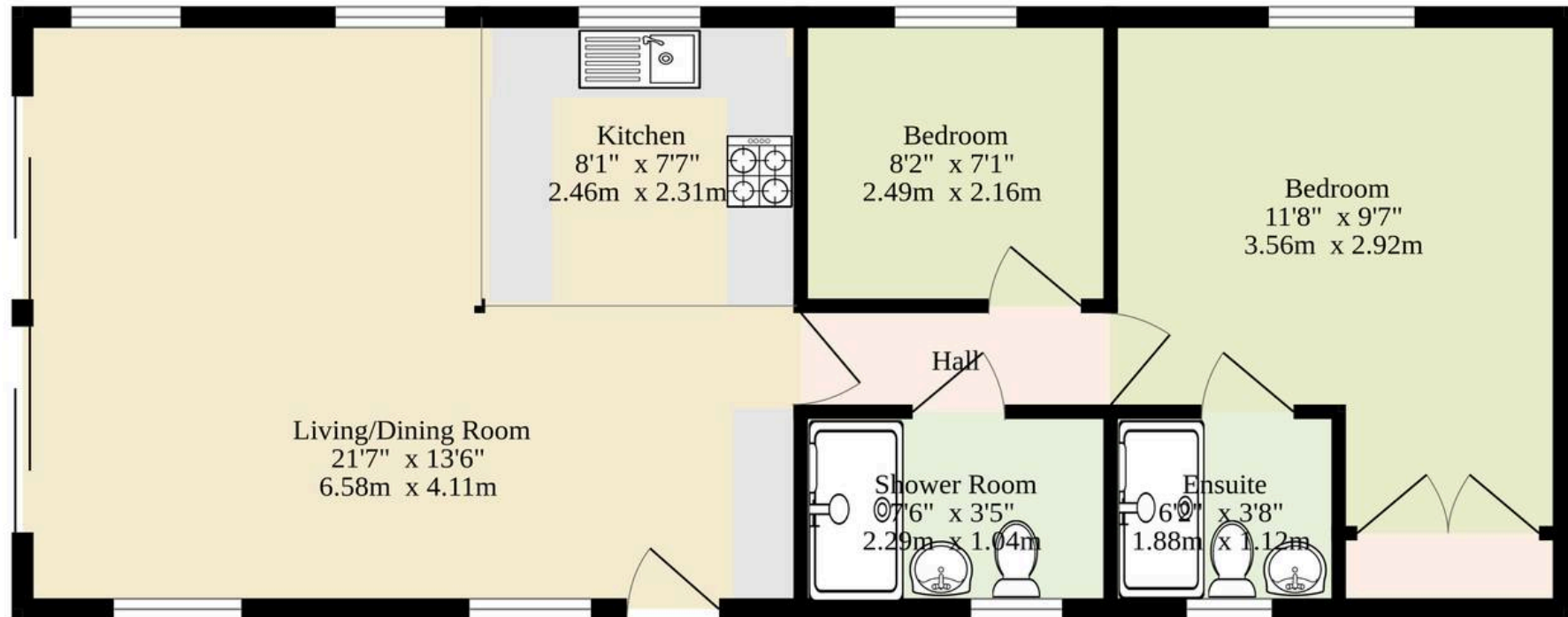
On-site amenities include an indoor pool, restaurant, adventure golf, mini-mart, and more, providing plenty of options for leisure and entertainment. Off-road parking adds convenience for visitors.

This home provides a comfortable, stylish base for enjoying everything the Suffolk coast has to offer.



M&B

Ground Floor 580 sq.ft. (53.9 sq.m.) approx.



TOTAL FLOOR AREA : 580 sq.ft. (53.9 sq.m.) approx.

Whilst every attempt has been made to ensure the accuracy of the floorplan contained here, measurements of doors, windows, rooms and any other items are approximate and no responsibility is taken for any error, omission or mis-statement. This plan is for illustrative purposes only and should be used as such by any prospective purchaser. The services, systems and appliances shown have not been tested and no guarantee as to their operability or efficiency can be given.

Made with Metropix ©2026

Dreaming of this home? Let's make it a *reality*



Meet *Macey*
Branch Manager



Meet *Bradley*
Senior Property Valuer



Meet *Ollee*
Senior Property Consultant

Minors & Brady
Your home, our market

 oultonbroad@minorsandbrady.co.uk

 01502 447788

 Ivy Lane, Oulton Broad, NR33 8QH

CAISTER-ON-SEA | DEREHAM | DISS | LETTINGS | NORWICH | OULTON BROAD | WROXHAM



How can we support

- ✓ Residential Mortgages
- ✓ Protection & Insurance
- ✓ Buy-to-let (personal and limited company)



Matt Waters
Senior Mortgage
and Protection Advisor



Victoria Payne
Mortgage and
Protection Advisor

Scan to book your
appointment today



T: 01692 531372

E: enquiries@norfolk-mortgages.co.uk