



Woodland View 3, Willerby Cadence, Coast Road, Corton

Corton



Minors & Brady

# Woodland View 3, Willerby Cadence, Coast Road

## Corton

Just a short stroll from the Suffolk coast, this luxury holiday home on Broadland Sands Holiday Park offers the perfect setting for seaside escapes and summer relaxation. Featuring a bright open-plan kitchen, dining, and living area that flows onto a wrap-around decked terrace, it's designed for effortless indoor-outdoor living. The home includes two bedrooms, with a principal suite complete with walk-in wardrobe and en-suite, a family bathroom, and practical off-road parking. With stylish interiors, outdoor entertaining space, and a prime coastal location, it provides an ideal retreat for families and friends seeking memorable holidays by the sea.

- Luxury holiday home positioned on the esteemed Broadland Sands Holiday Park in Suffolk
- Immaculate condition
- A stones throw away from the coast, offering a beautiful setting for walks and summer days by the sea
- Fully-fitted kitchen with quality cabinetry, integrated appliances and furnishings
- Two bedrooms, one principal with a walk-in wardrobe and a private en-suite, and another with twin beds for children or guests
- Family bathroom comprising of a quality three-piece suite
- Wrap-around decked terrace with furniture included, perfect for summer months
- Off-road parking
- Fantastic range of on-site facilities including an indoor pool, restaurant, adventure golf, mini mart shop and much more!



M&B



M&B

# Woodland View 3, Willerby Cadence, Coast Road

Corton

## Broadland Sands Holiday Park

Escape to the Broadland Sands holiday park for an unforgettable summer vacation! With a wealth of fantastic facilities, ensuring a delightful experience for all guests. Dive into excitement at the indoor pool with its thrilling 45-meter flume and paddling pool for little ones. Embark on a roarsome adventure with the dinosaur-themed golf course, promising laughter and friendly competition. Be captivated by the family entertainment venue, offering a medley of shows and activities. Unwind at the sports bar and lounge, savouring the relaxed atmosphere and catching up on live sports. Indulge your taste buds at the restaurant or grab a quick bite from the takeaway facilities. Broadland Sands holiday park is the ultimate summer destination, catering to all ages with its diverse array of amenities and ensuring cherished memories for years to come.

## Agents Notes

Leasehold, with 37 years left on the lease.

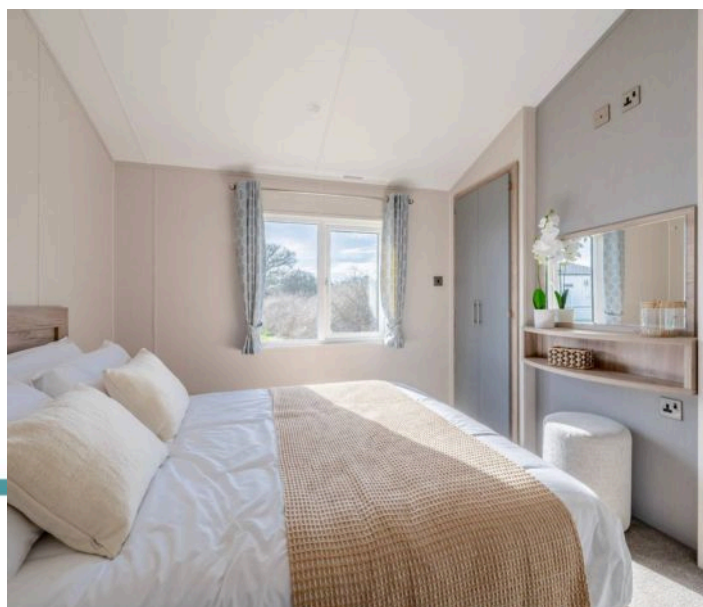
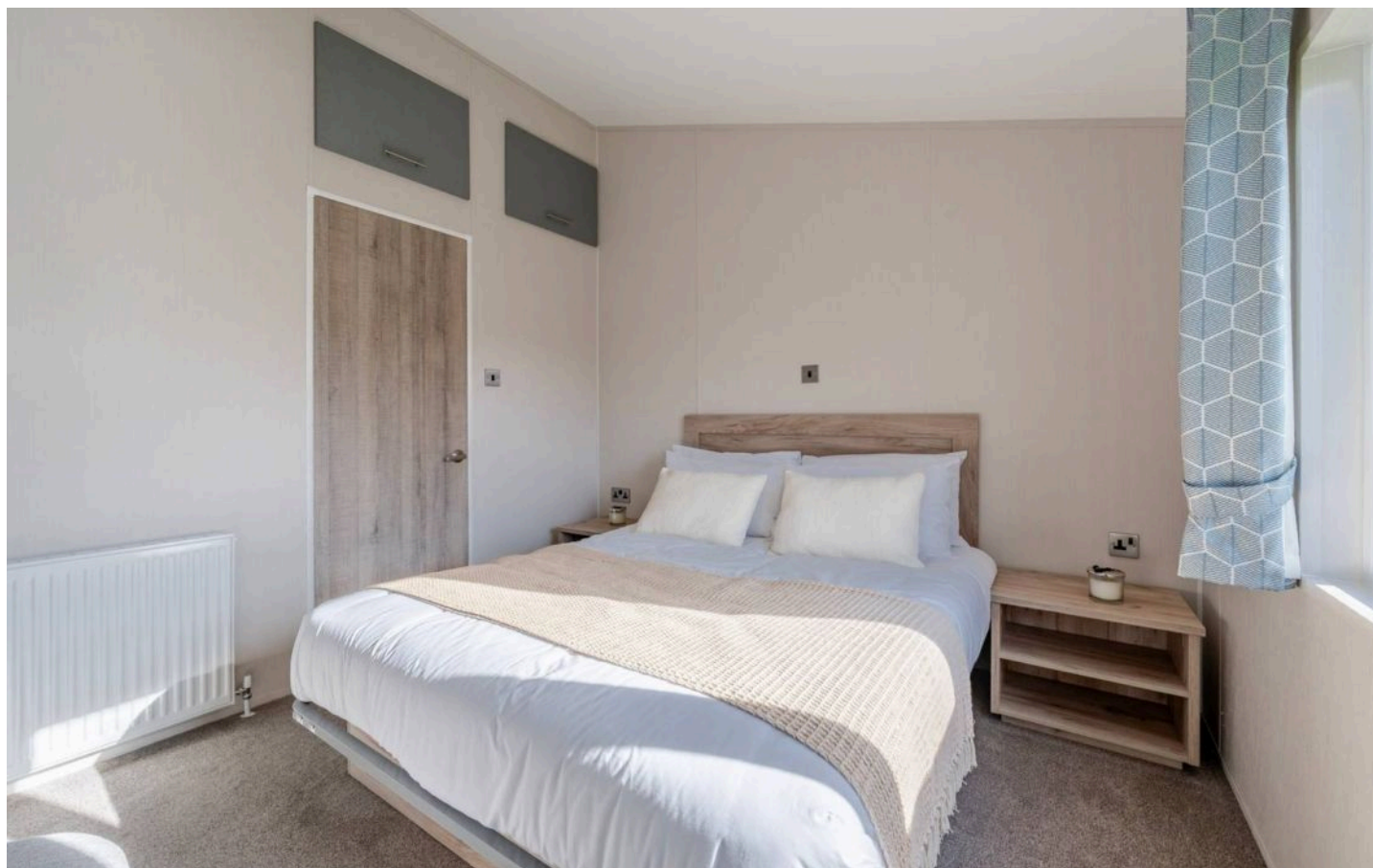
Ground rent: £7,995 p/a.

Management company: Park Holidays

Size: 40 x 20

Built in 2023

Combi boiler.



M&B

# Woodland View 3, Willerby Cadence, Coast Road

Corton

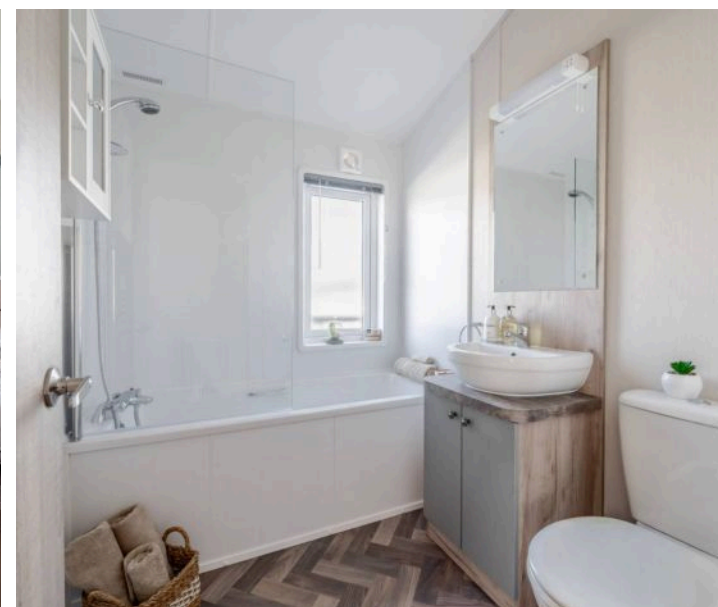
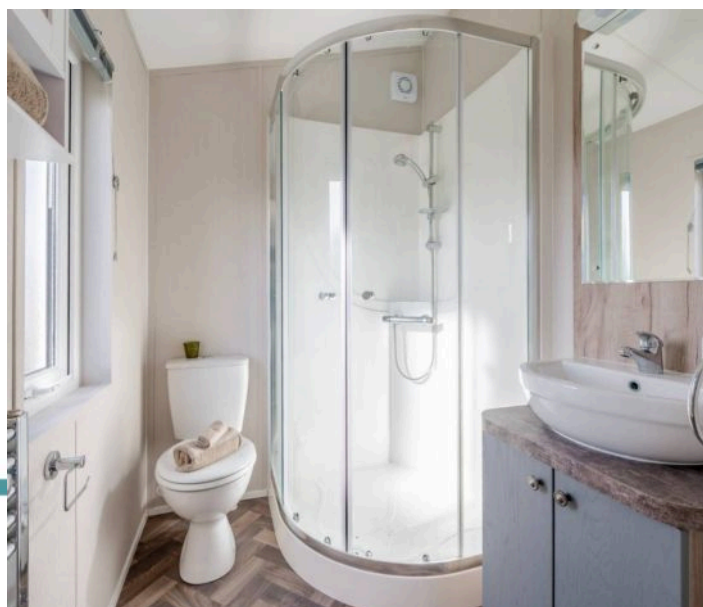
This luxury holiday home is set within the esteemed Broadland Sands Holiday Park, just a stone's throw from the Suffolk coastline. The location offers the perfect backdrop for coastal walks, summer days by the sea, and relaxed family holidays.

Inside, the open-plan kitchen, dining, and living area features sliding doors that lead directly onto the wrap-around decked terrace. The fully-fitted kitchen includes quality cabinetry, integrated appliances, and stylish furnishings, creating a modern and welcoming space for cooking, dining, and relaxing.

The property offers two bedrooms. The principal bedroom includes a walk-in wardrobe and a private en-suite, while the second bedroom, with twin beds, is ideal for children or guests. A family bathroom with a contemporary three-piece suite completes the interior.

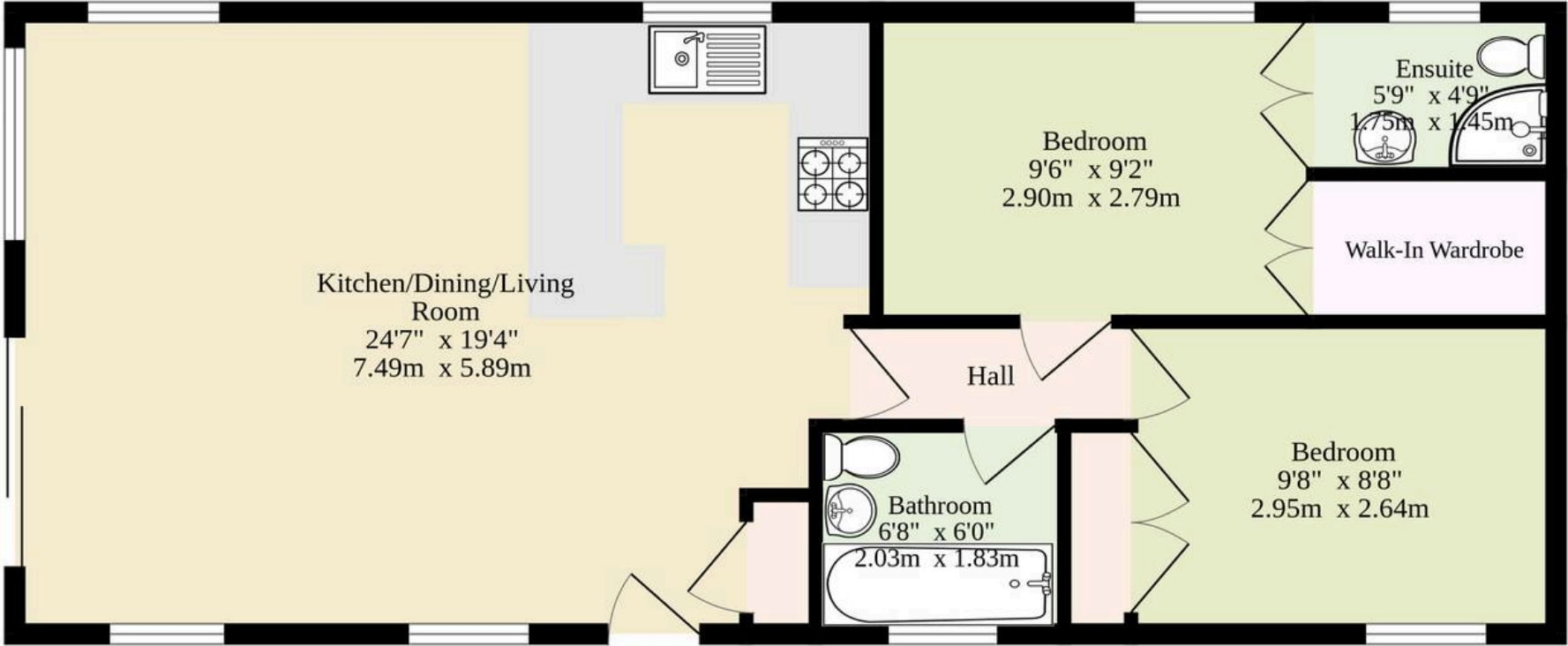
Outside, the wrap-around decked terrace comes with furniture and provides an inviting space to enjoy the summer months. Off-road parking adds practicality and convenience.

With its coastal location, modern interiors, and outdoor living space, this holiday home offers a superb setting for memorable stays in Suffolk.



M&B

**Ground Floor**  
**774 sq.ft. (71.9 sq.m.) approx.**



**TOTAL FLOOR AREA : 774 sq.ft. (71.9 sq.m.) approx.**

Whilst every attempt has been made to ensure the accuracy of the floorplan contained here, measurements of doors, windows, rooms and any other items are approximate and no responsibility is taken for any error, omission or mis-statement. This plan is for illustrative purposes only and should be used as such by any prospective purchaser. The services, systems and appliances shown have not been tested and no guarantee as to their operability or efficiency can be given.

Made with Metropix ©2026

# Dreaming of this home? Let's make it a *reality*



Meet *Macey*  
Branch Manager



Meet *Bradley*  
Senior Property Valuer



Meet *Ollee*  
Senior Property Consultant

Minors & Brady  
*Your home, our market*

 [oultonbroad@minorsandbrady.co.uk](mailto:oultonbroad@minorsandbrady.co.uk)

 01502 447788

 Ivy Lane, Oulton Broad, NR33 8QH

CAISTER-ON-SEA | DEREHAM | DISS | LETTINGS | NORWICH | OULTON BROAD | WROXHAM



## How can we support

- ✓ Residential Mortgages
- ✓ Protection & Insurance
- ✓ Buy-to-let (personal and limited company)



**Matt Waters**  
Senior Mortgage  
and Protection Advisor



**Victoria Payne**  
Mortgage and  
Protection Advisor

Scan to book your  
appointment today



T: 01692 531372

E: [enquiries@norfolk-mortgages.co.uk](mailto:enquiries@norfolk-mortgages.co.uk)