



46 Newton Street, Newton St. Faith
Norwich

Minors & Brady



£155,000
Minors & Brady

46 Newton Street

Newton St. Faith, Norwich

This stylish maisonette offers a private entrance and a modern feel. The spacious living room features plush carpeting and a rich blue theme, while the neutral kitchen offers dining space. Both bedrooms are designed for comfort with fitted carpeting and stylish paneling. The newly fitted bathroom boasts contemporary fixtures and mosaic flooring. Off-road parking and a private garden with scenic field views complete this desirable property.

- Private entrance to your first floor apartment
- Neutral toned kitchen with sufficient fitted units
- Newly fitted bathroom with contrasting matching mosaic flooring and modern fixtures
- Two double bedrooms each designed with stylish paneling
- Private garden with scenic field views
- Off road parking via a driveway to the front
- Newly renovated maisonette in Newton St Faith
- Currently rented for £900pcm
- Ideal first home



M&B



Minors & Brady

M&B

46 Newton Street

Newton St. Faith, Norwich

Council Tax band: A

Tenure: Leasehold

EPC Energy Efficiency Rating: C

EPC Environmental Impact Rating:



M&B

46 Newton Street

Newton St. Faith, Norwich

This stylish maisonette offers a private entrance and a modern feel. The spacious living room features plush carpeting and a rich blue theme, while the neutral kitchen offers dining space. Both bedrooms are designed for comfort with fitted carpeting and stylish paneling. The newly fitted bathroom boasts contemporary fixtures and mosaic flooring. Off-road parking and a private garden with scenic field views complete this desirable property.

The Location

Nestled in the charming village of Newton St Faith, Newton Street offers a picturesque setting and the village of Horsford is just a stone's throw away that offers plentiful amenities. Residents can enjoy the convenience of a nearby local shop and chip shop, perfect for everyday essentials and delicious takeaways.

For those who love outdoor adventures, the nearby forest provides scenic walks and opportunities to explore nature. Alongside local parks and schooling options available for those with children. With easy access onto the NDR, residents can effortlessly reach neighbouring villages and towns, enhancing the accessibility and appeal of this attractive location.

Newton Street, Newton St. Faith

Upon entering the property, your private entrance is laid with mosaic-style flooring, leading up the stairs to your living quarters.

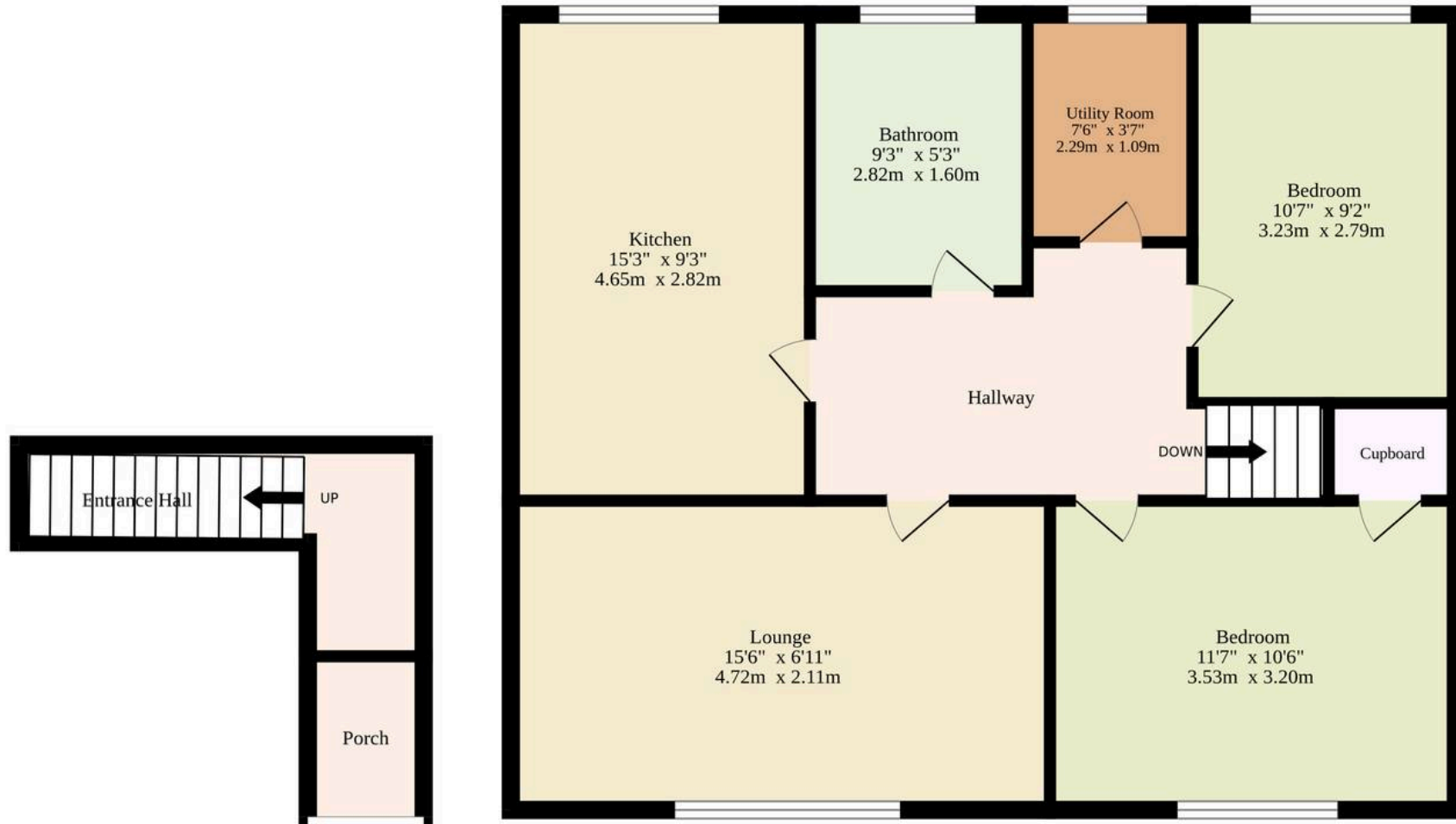
The sizeable living room boasts a rich blue theme, plush carpeting, and generous proportions to arrange your furniture to your liking.

The neutral-toned kitchen features sufficient fitted units and a small dining area, perfect for enjoying meals with loved ones.



Ground Floor

1st Floor
679 sq.ft. (63.1 sq.m.) approx.



TOTAL FLOOR AREA : 679sq.ft. (63.1 sq.m.) approx.

Whilst every attempt has been made to ensure the accuracy of the floorplan contained here, measurements of doors, windows, rooms and any other items are approximate and no responsibility is taken for any error, omission or mis-statement. This plan is for illustrative purposes only and should be used as such by any prospective purchaser. The services, systems and appliances shown have not been tested and no guarantee as to their operability or efficiency can be given.
Made with Metropix ©2025

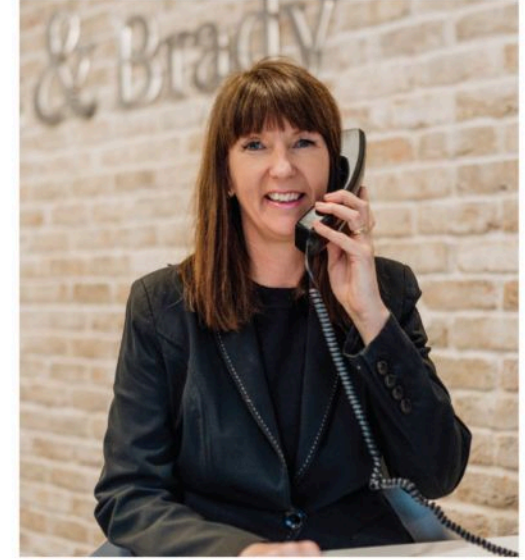
Dreaming of this home? Let's make it a *reality*



Meet *Abi*
Branch Partner



Meet *Karol*
Property Valuer



Meet *Claire*
Aftersales Team Leader

Minors & Brady
Your home, our market



wroxham@minorsandbrady.co.uk



01603 783088



6 Church Road, Wroxham, Norwich, NR12 8UG

CAISTER-ON-SEA | DEREHAM | DISS | NORWICH | OULTON BROAD | WROXHAM



How can we support

- ✓ Residential Mortgages
- ✓ Protection & Insurance
- ✓ Buy-to-let (personal and limited company)



Matt Waters
Senior Mortgage
and Protection Advisor



Victoria Payne
Mortgage and
Protection Advisor

Scan to book your
appointment today



T: 01692 531372

E: enquiries@norfolk-mortgages.co.uk