



6 Adrian Court Alexandra Road, Lowestoft

Lowestoft



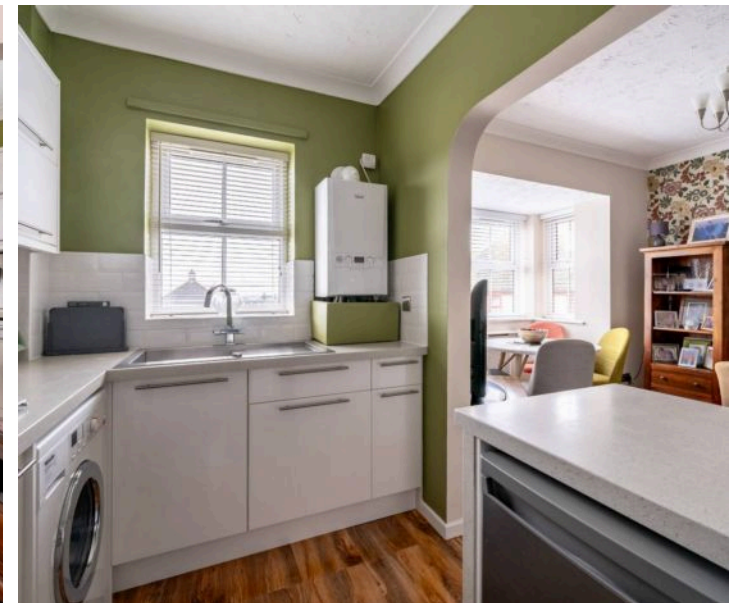
Minors & Brady

6 Adrian Court Alexandra Road

Lowestoft

Set along Alexandra Road in the coastal town of Lowestoft, this well-presented top-floor flat combines light-filled living with everyday convenience just moments from the town centre and the scenic east coast. Offering a spacious bay-fronted living/dining room that flows into a fitted kitchen, two versatile bedrooms and a classic three-piece bathroom, the property is designed to adapt to a range of lifestyles. With generous storage, well-maintained communal grounds, an allocated parking space and visitor parking, it provides a practical and comfortable base close to shops, schools and transport links.

- Top-floor flat located down Alexandra Road in the coastal town of Lowestoft, moments away from the town centre
- Well-presented interior that can easily adapt to your own preferences and style
- Spacious living/dining room with a bay-window that fills the space in natural light, effortlessly flowing into the kitchen
- Kitchen is fitted with cabinetry, an integrated oven with an induction hob, a sink/drain unit and under-counter areas for your own appliances
- Two bedrooms offering comfort and privacy, with the flexibility to have a home office, dressing room or a snug
- Bathroom comprising of a classic three-piece suite
- Well-maintained communal grounds that surround the building
- One allocated parking space, plus visitor parking
- Close to a wide range of essential amenities, including shops, schools, transport links and the scenic east coast





M&B

6 Adrian Court Alexandra Road

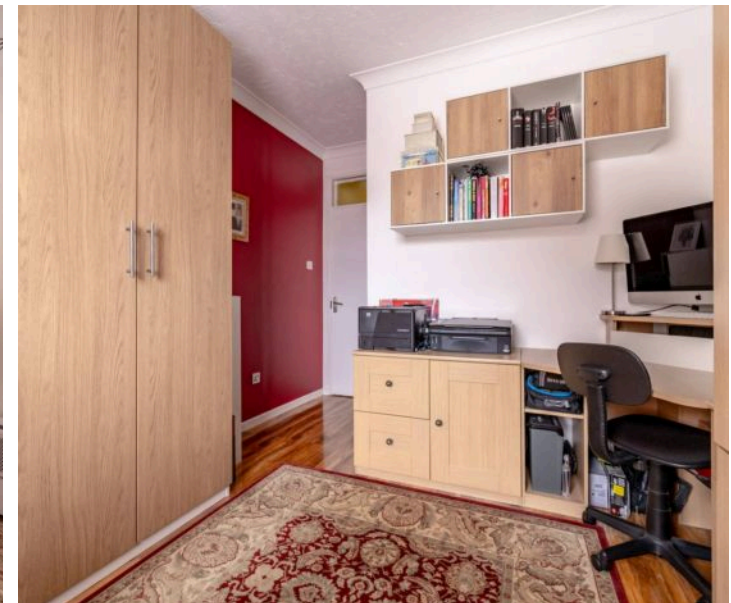
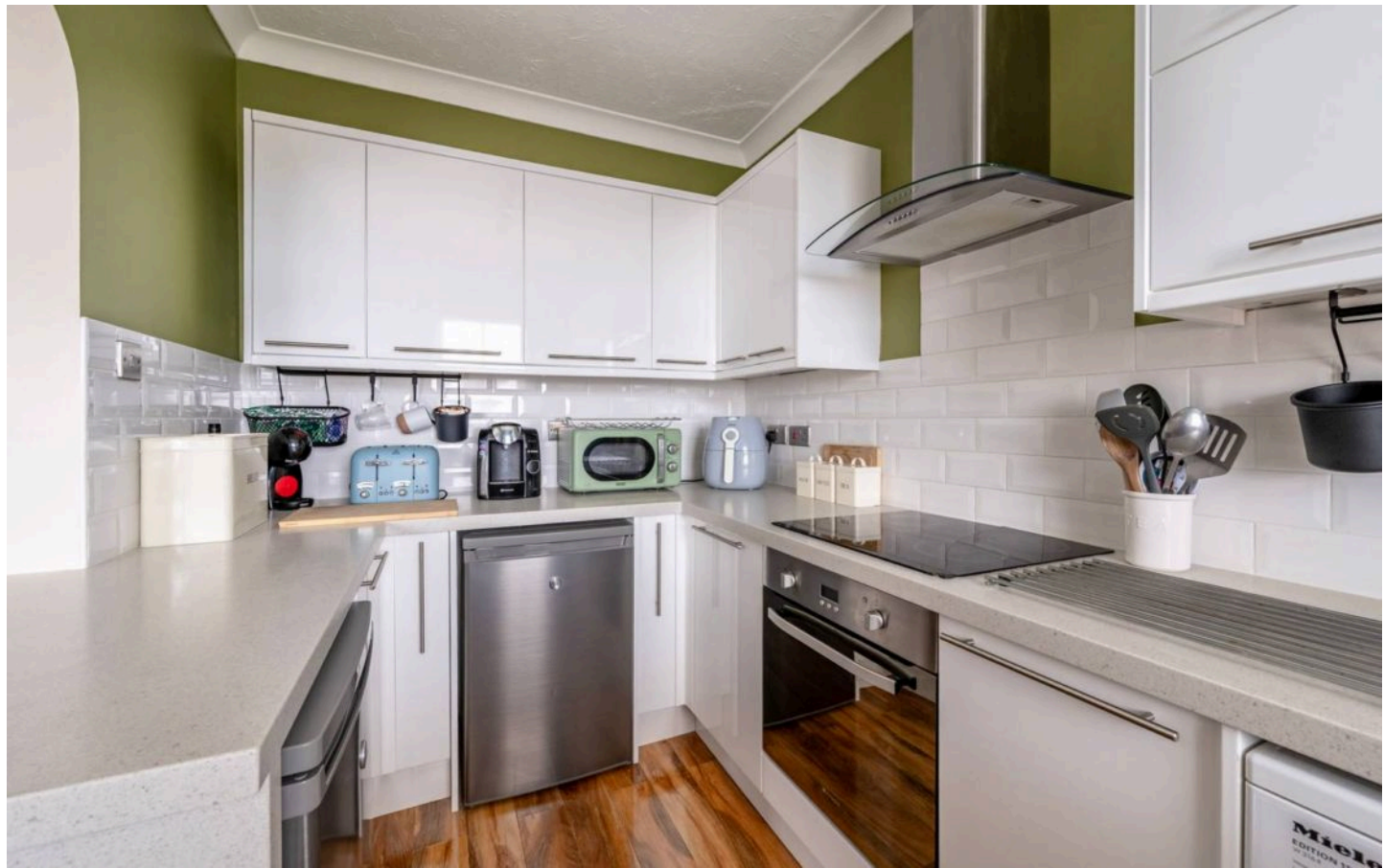
Lowestoft

Location

Adrian Court is situated on Alexandra Road, in a convenient northern area of Lowestoft. The town centre is within easy walking distance, offering a variety of high street shops, independent stores, cafés, and essential services. Alexandra Road Surgery is just a short stroll away, providing accessible GP services and a community pharmacy for everyday healthcare needs.

Local amenities are plentiful, with small supermarkets, convenience stores, and local businesses lining the surrounding streets, making day-to-day errands straightforward. Families benefit from a selection of nearby schools: primary options such as St Margaret's Primary and Roman Hill Primary are a short drive or walk away, while secondary schools including Ormiston Denes Academy are easily accessible.

Transport connections are strong. Bus stops along Alexandra Road link to routes across Lowestoft and the surrounding Suffolk area, while Lowestoft railway station is a short journey south, offering direct services to Ipswich, Norwich, and beyond. The area balances easy access to everyday conveniences with the relaxed atmosphere of a coastal town, providing residents with both practicality and the opportunity to enjoy the lifestyle that Lowestoft offers.



M&B

6 Adrian Court Alexandra Road

Lowestoft, Lowestoft

Set within well-maintained communal grounds, the building provides a pleasant approach and a sense of privacy. An allocated parking space, along with visitor parking, ensures practicality for both residents and guests.

Inside, the flat is well-presented and thoughtfully arranged, offering interiors that can easily adapt to your own preferences and style. A welcoming entrance hall greets you on arrival, complete with a generous storage cupboard ideal for coats, shoes and everyday belongings.

The spacious living and dining room forms the heart of the home. A bay window draws in natural light, creating a bright and comfortable setting for relaxing evenings or hosting friends. The layout flows effortlessly into the kitchen, allowing for easy day-to-day living and sociable gatherings. The kitchen itself is fitted with cabinetry, an integrated oven with induction hob, a sink and drainer unit, and under-counter space for your own appliances, offering both functionality and scope to personalise.



M&B

6 Adrian Court Alexandra Road

Lowestoft, Lowestoft

Two bedrooms provide comfort and privacy. Whether used as restful sleeping spaces, a dedicated home office, dressing room or snug, the flexibility of these rooms makes the property well suited to a variety of lifestyles. The bathroom is fitted with a classic three-piece suite, completing the accommodation.

Combining light-filled living space, practical features and a highly convenient coastal location, this top-floor apartment presents an excellent opportunity to enjoy Lowestoft's amenities and shoreline while having a home that can evolve with your needs.

Agents Notes

Leasehold, with a share of the freehold.

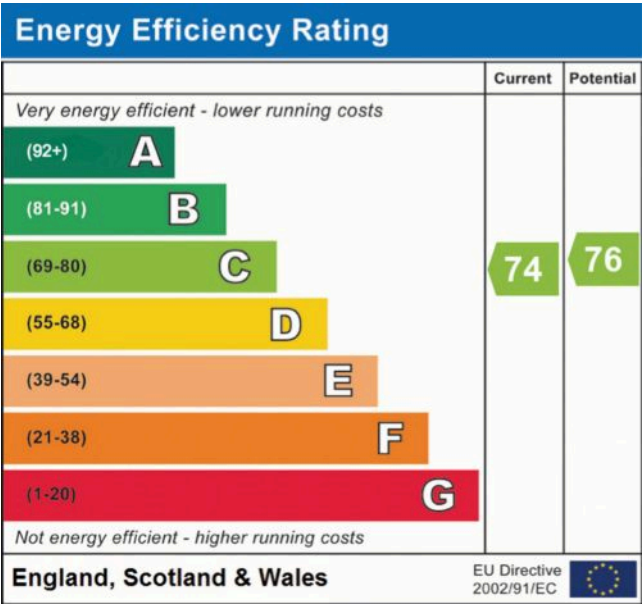
Annual fees are £700, due by the 31st January each year.

Management company: Adrian Court Management Co Ltd.

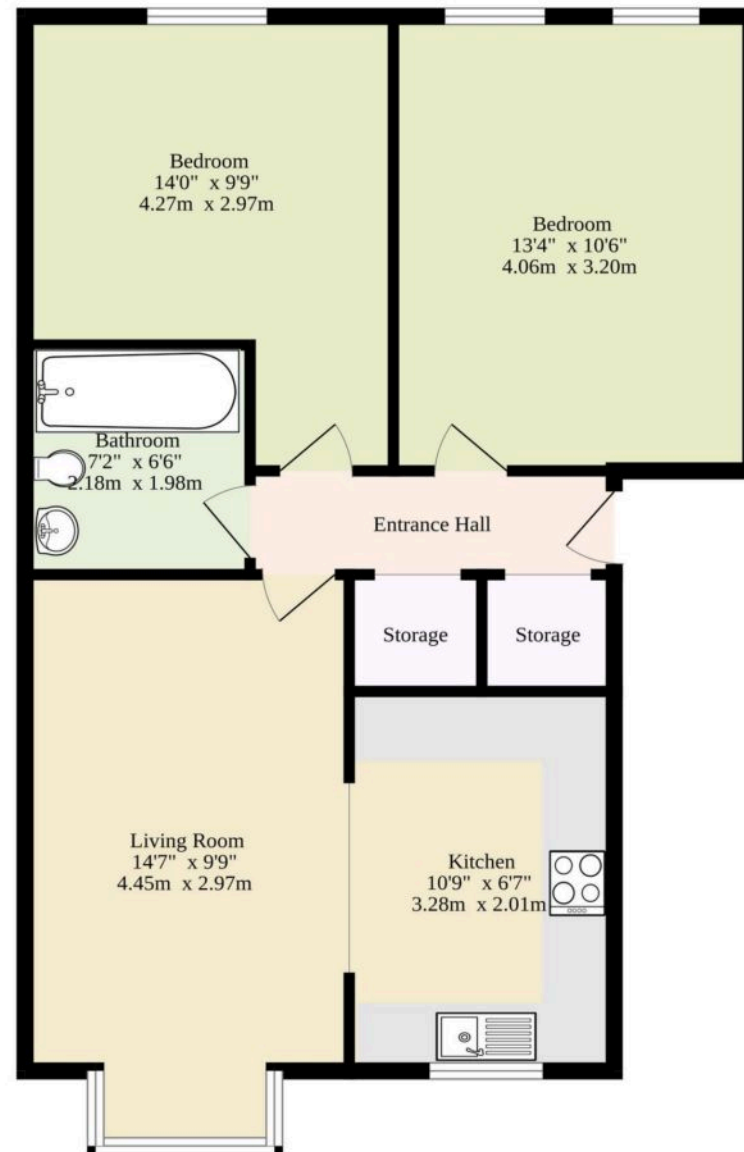
Connected to all mains services.

Shared access to communal areas.

This property is subject to a restrictive covenant prohibiting subletting and the keeping of pets.



Top Floor
610 sq.ft. (56.7 sq.m.) approx.



TOTAL FLOOR AREA : 610 sq.ft. (56.7 sq.m.) approx.

Whilst every attempt has been made to ensure the accuracy of the floorplan contained here, measurements of doors, windows, rooms and any other items are approximate and no responsibility is taken for any error, omission or mis-statement. This plan is for illustrative purposes only and should be used as such by any prospective purchaser. The services, systems and appliances shown have not been tested and no guarantee as to their operability or efficiency can be given.
Made with Metropix 62026

Dreaming of this home?

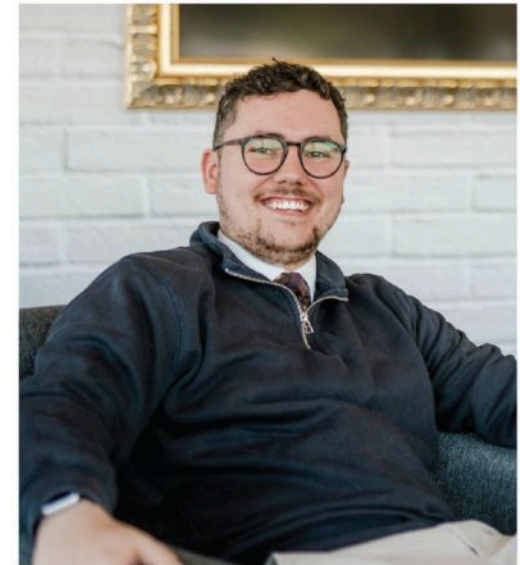
Let's make it a *reality*



Meet *Macey*
Branch Manager



Meet *Bradley*
Senior Property Valuer



Meet *Ollee*
Senior Property Consultant

Minors & Brady

Your home, our market



oultonbroad@minorsandbrady.co.uk



01502 447788



Ivy Lane, Oulton Broad, NR33 8QH

CAISTER-ON-SEA | DEREHAM | DISS | LETTINGS | NORWICH | OULTON BROAD | WROXHAM



How can we support

- ✓ Residential Mortgages
- ✓ Protection & Insurance
- ✓ Buy-to-let (personal and limited company)



Matt Waters
Senior Mortgage
and Protection Advisor



Victoria Payne
Mortgage and
Protection Advisor

Scan to book your
appointment today



T: 01692 531372

E: enquiries@norfolk-mortgages.co.uk