



18 Copenhagen Way, Norwich

Norwich



Minors & Brady

18 Copenhagen Way

This six-bedroom end townhouse offers versatile living across three spacious floors, ideal for large families or investors. Situated just north of Norwich city centre, it combines style, practicality, and easy access to local amenities. The ground floor impresses with a flexible study, modern cloakroom, and a bright lounge set in a transformed conservatory. At the heart of the home, the open-plan kitchen and dining area provides a perfect space for family meals or entertaining guests. Upstairs, recently updated bathrooms and adaptable bedrooms enhance comfort and modern living. The property also boasts a private rear garden, garage, and generous off-road parking for multiple vehicles. Thoughtfully designed and well maintained, this home balances contemporary style with practical functionality from day one.

- Six-bedroom end townhouse with flexible layout
- Spacious three-floor living with adaptable room usage
- Open-plan kitchen and dining area with space for appliances
- Bright lounge created from a converted conservatory
- Recently renovated modern bathrooms on all floors
- Ground-floor study currently used as an extra bedroom
- Master bedroom with ensuite bathroom on the second floor
- Private, fully enclosed rear garden with lawn and paved area
- Garage plus excellent off-road parking for multiple vehicles
- Convenient location just north of Norwich city centre, close to amenities and transport links





M&B

18 Copenhagen Way

The Location

Copenhagen Way is situated in a popular residential area to the north of Norwich city centre, offering a well-balanced mix of convenience and access to green space. The location benefits from its proximity to Aylsham Road, one of the main routes into the city, where residents will find a practical selection of everyday amenities.

These include independent shops, small supermarkets, cafés, and takeaways, as well as regular bus services providing straightforward links into the city centre and surrounding areas.

For those who value outdoor space, both Wensum Park and Waterloo Park are within comfortable walking distance. Wensum Park follows the River Wensum and offers open lawns, sports facilities, and riverside paths, while Waterloo Park is known for its well-kept gardens, bandstand, and recreational areas. These spaces provide accessible options for walking, exercise, and relaxation without needing to travel far.

There are several schools in the wider area, along with GP surgeries and other healthcare services, contributing to the practicality of the location for day-to-day living. Road connections from this part of Norwich also allow relatively easy access out towards the ring road and beyond, which may be useful for commuters.

Overall, Copenhagen Way offers a location that combines everyday convenience with nearby green space, making it suitable for a range of lifestyles, particularly those looking for a quieter setting while remaining within easy reach of the city.



18 Copenhagen Way

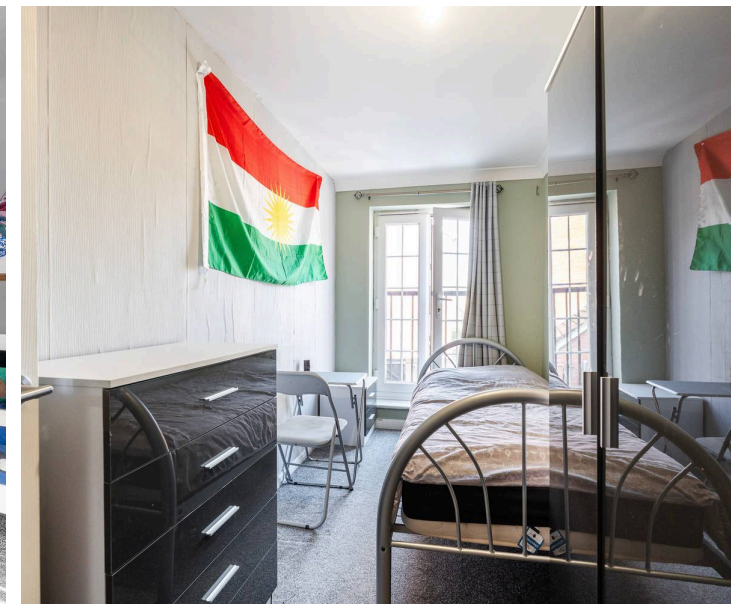
Copenhagen Way, Norwich

This beautifully presented six-bedroom end townhouse offers flexible and spacious living, making it perfect for larger families or as an investment opportunity. Located in a highly sought-after area just north of Norwich city centre, the property combines practicality, comfort, and style, all within easy reach of local amenities and transport links. With six bedrooms, easily adaptable to four depending on how you use the rooms, this home provides incredible versatility for modern living.

The ground floor features a welcoming entrance hall leading to a cloakroom and a versatile study, currently used as a bedroom. The conservatory has been transformed into a bright and airy lounge, perfect for relaxing or entertaining. The open-plan kitchen and dining area forms the heart of the home, complete with fitted units, space for appliances, and space for family gatherings.

The layout offers flexibility to suit your lifestyle, whether that's casual family meals or hosting friends.

On the first floor, you'll find additional double bedrooms, including one currently used as a sitting room, and a beautifully finished new bathroom, adding a modern touch to the living spaces. The second floor hosts the master bedroom with its ensuite, another double bedroom, and a further newly fitted family bathroom.



18 Copenhagen Way

All bathrooms in the house have been recently updated to a high standard, providing a fresh and contemporary feel throughout.

Externally, the property offers excellent off-road parking for multiple vehicles alongside a garage. The private rear garden is fully enclosed, mainly laid to lawn with a paved area, creating a secure and enjoyable outdoor space.

The combination of parking, garage, and garden makes this home highly practical as well as attractive.

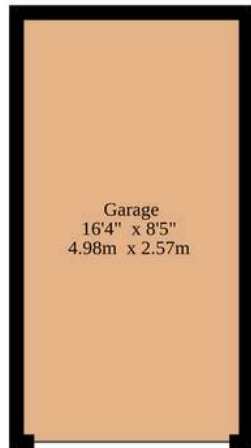
Well maintained and thoughtfully designed, this six-bedroom townhouse provides flexibility, comfort, and space across three floors. With versatile living arrangements, all new bathrooms, lots of parking, a garage, and a private garden, it's a property ready to accommodate your family's needs from day one.

Agents Note

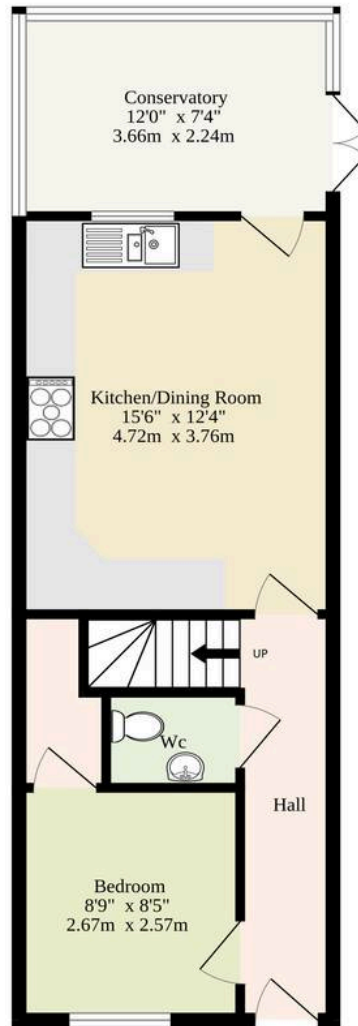
This property will be sold freehold and connected to mains water, electricity, gas and drainage.



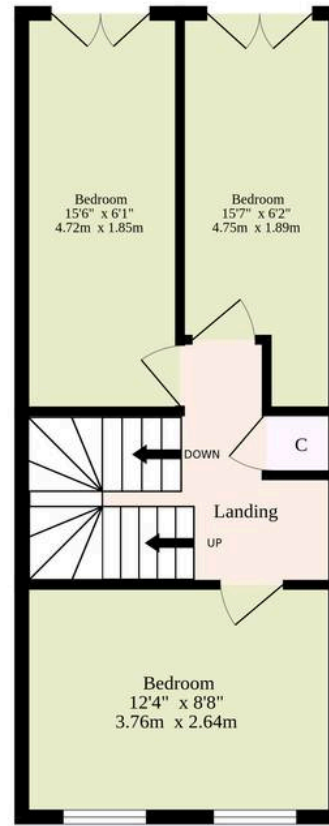
Basement
139 sq.ft. (12.9 sq.m.) approx.



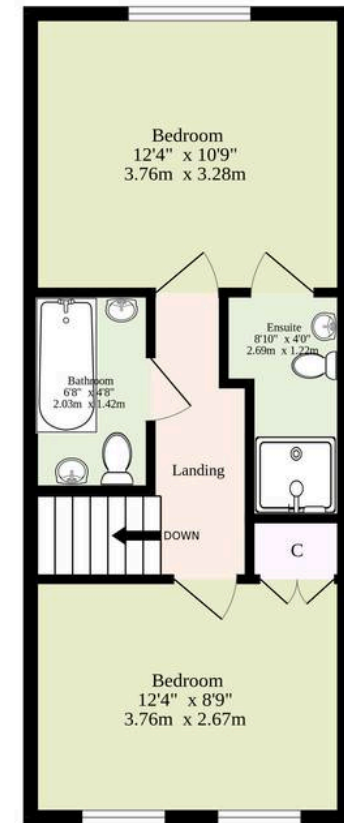
Ground Floor
452 sq.ft. (42.0 sq.m.) approx.



1st Floor
382 sq.ft. (35.5 sq.m.) approx.



2nd Floor
336 sq.ft. (31.2 sq.m.) approx.



TOTAL FLOOR AREA : 1309 sq.ft. (121.6 sq.m.) approx.

Whilst every attempt has been made to ensure the accuracy of the floorplan contained here, measurements of doors, windows, rooms and any other items are approximate and no responsibility is taken for any error, omission or mis-statement. This plan is for illustrative purposes only and should be used as such by any prospective purchaser. The services, systems and appliances shown have not been tested and no guarantee as to their operability or efficiency can be given.

Made with Metropix ©2026

Dreaming of this home? Let's make it a *reality*.



Meet *Liam*
Branch Manager




Meet *Rosie*
Senior Sales Progressor



Meet *Tristan*
Senior Property Lister

Minors & Brady
Your home, our market

 norwich@minorsandbrady.co.uk

 01603 365085

 107 Unthank Road, Norwich, NR2 2PE

CAISTER-ON-SEA | DEREHAM | DISS | NORWICH | OULTON BROAD | WROXHAM



How can we support

- ✓ Residential Mortgages
- ✓ Protection & Insurance
- ✓ Buy-to-let (personal and limited company)



Matt Waters
Senior Mortgage
and Protection Advisor



Victoria Payne
Mortgage and
Protection Advisor

Scan to book your
appointment today



T: 01692 531372

E: enquiries@norfolk-mortgages.co.uk