



7 Lord Nelson Drive, Norwich

£350,000 Freehold

Introducing this exceptional three-storey, four-bedroom terraced house, a superb family home that combines style, comfort, and functionality. With spacious interiors, an enclosed garden, and allocated parking, it offers the perfect setting for modern living. Conveniently located near local amenities, schools, and transport links, this property is ideal for family life. Contact us today to arrange a viewing.

Location

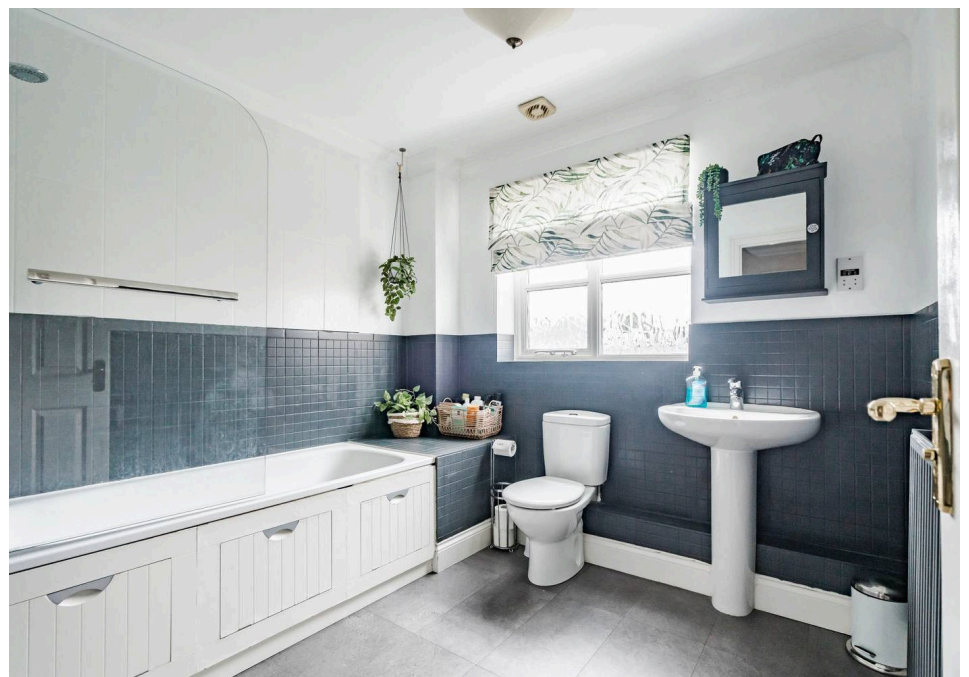
Lord Nelson Drive, situated in Norwich, benefits from a well-connected and residential location. This area provides easy access to local amenities including shops, schools, and parks, making it convenient for families and professionals alike. The road is well-served by public transport, with regular bus routes linking to Norwich city centre and surrounding areas. Additionally, it is close to major roadways, providing straightforward connections for commuting. Nearby green spaces, such as the picturesque Eaton Park, offer recreational opportunities. The location is known for its diverse community and proximity to key facilities, including the Norfolk and Norwich University Hospital and the University of East Anglia.



Agents Note

We understand that the property is being sold as a freehold. Connected to all mains such as water, electricity, drainage and gas.

Tax Council Band - D



Lord Nelson Drive, Norwich

Upon entering the property, you are greeted by an inviting entrance hall that leads to a ground-floor WC and a useful cupboard for storage. The focal point of the ground floor is the open-plan kitchen and dining area, boasting fully integrated appliances, sleek white built-in cupboards, and ample countertop and storage space. The laminated wooden floors elegantly divide the kitchen and dining area, creating a practical and stylish living space. The dining area offers direct access to the rear garden, perfect for indoor-outdoor living.

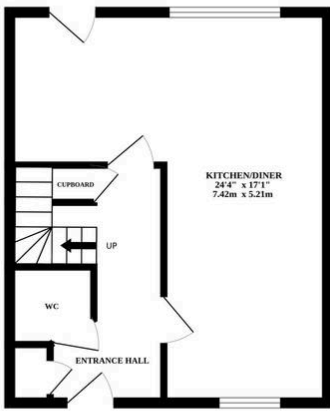
Moving up to the first floor, you will find a spacious lounge with a fireplace and large windows flooding the room with natural light. Additionally, there is a versatile space that can be utilised as a fourth bedroom or a home office. The first floor also hosts a spacious bathroom featuring a bathtub equipped with a shower head and a half-glass panel, finished with stylish black backsplash tiles.

Ascending to the second floor, you will discover the remaining three bedrooms. Each bedroom offers comfort and privacy, making it ideal for families of all sizes. The master bedroom features built-in wardrobes and an en-suite bathroom. The en suite bathroom boasts a step-in shower for added convenience and practicality.

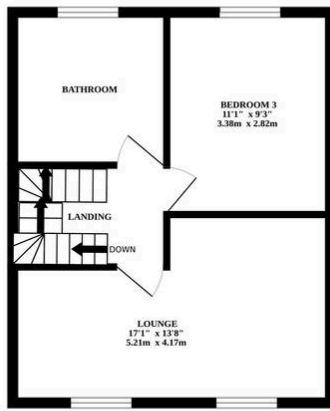
Outside, the property features a rear enclosed garden primarily laid to lawn, with a wooden deck area perfect for placing patio furniture and enjoying outdoor activities. Additionally, the property includes a garage and one allocated parking space, ensuring convenience and security for residents.



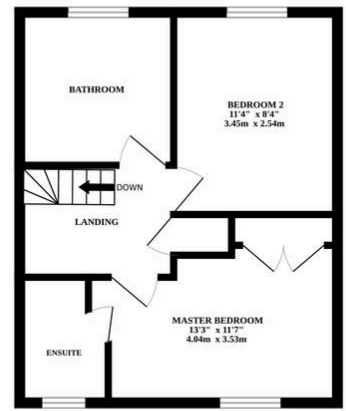
GROUND FLOOR



1ST FLOOR



2ND FLOOR



Whilst every attempt has been made to ensure the accuracy of the floorplan contained here, measurements of doors, windows, rooms and any other items are approximate and no responsibility is taken for any error, omission or mis-statement. This plan is for illustrative purposes only and should be used as such by any prospective purchaser. The services, systems and appliances shown have not been tested and no guarantee as to their operability or efficiency can be given.
Made with Metropix ©2024