



56 Bethel Street, Norwich

Norwich



Guide Price **£120,000**
Minors & Brady

56 Bethel Street

Norwich

Guide Price: £120,000-£130,000. This well-positioned commercial premises on Bethel Street is currently operating as a spacious bookshop and library-style space, housing thousands of books.

- Guide Price: £120,000-£130,000
- Prime location on Bethel Street, with excellent footfall and strong local occupancy
- Currently functioning as a bookshop/library, housing thousands of books
- Four well-proportioned rooms offering flexible space for multiple uses
- Secure freehold – full legal ownership for peace of mind
- Includes a WC facility
- Potential for conversion into a residential flat or Airbnb (subject to planning permissions)
- Characterful interior with existing shelving and library-style features
- Ideal for retail, office, studio, gallery, or mixed-use purposes
- Strong investment potential due to location, versatility, and occupancy in the area





M&B

56 Bethel Street

Norwich

Council Tax band: A

Tenure: Freehold



56 Bethel Street

Norwich

Guide Price: £120,000-£130,000. This well-positioned commercial premises on Bethel Street is currently operating as a spacious bookshop and library-style space, housing thousands of books. The freehold property features four versatile rooms and a WC, offering flexibility for a variety of commercial or mixed-use purposes. Its characterful interior and library-style fit-out create a welcoming and adaptable environment suitable for retail, office, gallery, or studio use. The location benefits from strong footfall, high occupancy, and proximity to key amenities, transport links, and the city centre. The property also presents exciting potential for conversion into a residential flat or Airbnb, subject to permissions. This rare opportunity combines immediate usability with excellent long-term investment and alternative use potential.

The Location

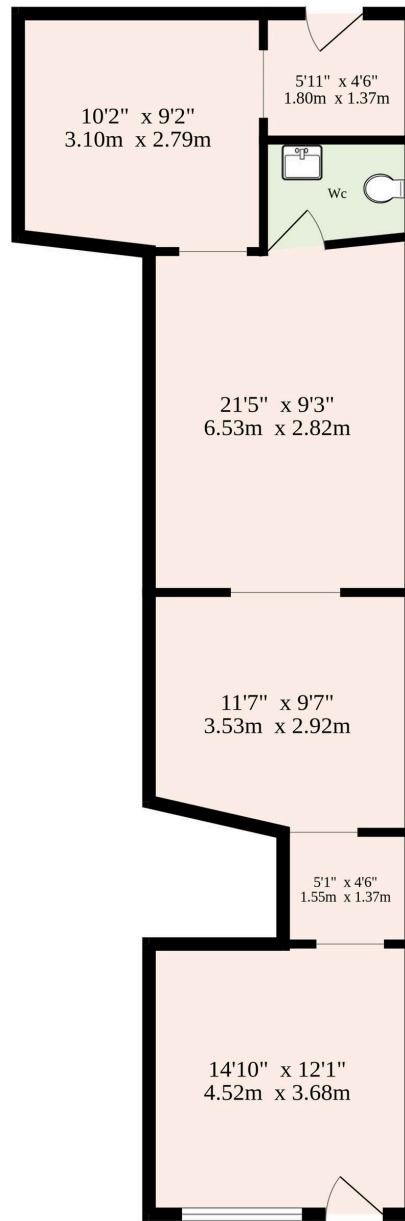
Perfectly positioned in the heart of Norwich's vibrant city centre. Nestled just moments from the serene Chapel Field Gardens, this delightful home is a short stroll from Chantry Place, Norwich's premier shopping destination, and a stone's throw from the ever-popular Waffle House, perfect for a sweet weekend treat or brunch with friends. Wander through the historic Norwich Market, explore boutique shops, or sample the array of dining options nearby, from cosy cafés to stylish restaurants and buzzing bars.

Just two streets away lies the lively St Benedicts Street. Here you'll find Huggle, a local favourite for delicious Eastern Mediterranean cuisine, along with a tempting mix of other fantastic restaurants, quirky bars, and vibrant eateries, making it a must-visit for food-lovers and social butterflies alike.

Everything you need is right on your doorstep, yet the home's peaceful, tucked-away setting makes it feel like your own secret escape. Excellent transport links add to the appeal, with



Ground Floor
650 sq.ft. (60.4 sq.m.) approx.



TOTAL FLOOR AREA : 650 sq.ft. (60.4 sq.m.) approx.

Whilst every attempt has been made to ensure the accuracy of the floorplan contained here, measurements of doors, windows, rooms and any other items are approximate and no responsibility is taken for any error, omission or mis-statement. This plan is for illustrative purposes only and should be used as such by any prospective purchaser. The services, systems and appliances shown have not been tested and no guarantee as to their operability or efficiency can be given.
Made with Metropix ©2026

Dreaming of this home? Let's make it a *reality*.



Meet *Liam*
Branch Manager



Meet *Nagilla*
Aftersales Team Leader



Meet *Tristan*
Senior Property Lister

Minors & Brady
Your home, our market

 norwich@minorsandbrady.co.uk

 01603 365085

 107 Unthank Road, Norwich, NR2 2PE

CAISTER-ON-SEA | DEREHAM | DISS | NORWICH | OULTON BROAD | WROXHAM



How can we support

- ✓ Residential Mortgages
- ✓ Protection & Insurance
- ✓ Buy-to-let (personal and limited company)



Matt Waters
Director and
Principal



Victoria Payne
Mortgage and
Protection Advisor

Offering you quick and professional mortgage advice every step of the way.

T: 01603 210378
E: enquiries@norfolk-mortgages.co.uk