



151 Sunbeach Holiday Park, California Road, Great Yarmouth

Great Yarmouth



Minors & Brady

151 Sunbeach Holiday Park, California Road

Great Yarmouth

Start your day with bright, sun-filled mornings at Sunbeach Holiday Park, enjoying fresh sea air and the relaxed pace of the Norfolk coast. This holiday chalet offers a comfortable living space where you can unwind in the light-filled lounge, cook easily in the well-equipped kitchen, and rest in one of the two cosy bedrooms. The modern bathroom, on-site parking, and well-maintained communal grounds make every day simple and stress-free. With a swimming pool, regular entertainment, a restaurant, and the Dutchy Bar, there's plenty to enjoy with family and friends while making the most of coastal living.

Agents Notes

We understand that this property is leasehold, with 33 years left on the lease.

Ground rent: £1875.39 p/a.

Maintenance fee is included in the ground rent.

Renewal for charges: December 2026.

Connected to mains water, electricity and drainage.

Electric heaters.

The site closes the last day in November and reopens 1st March each year.



M&B

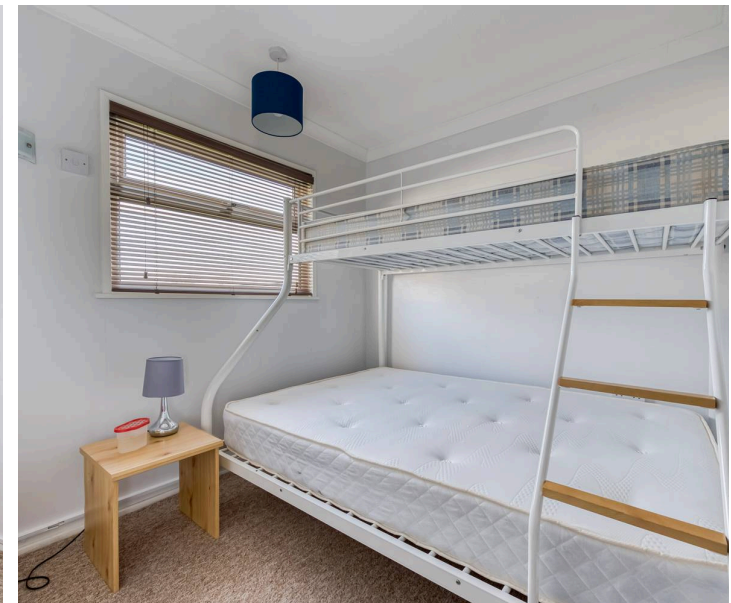
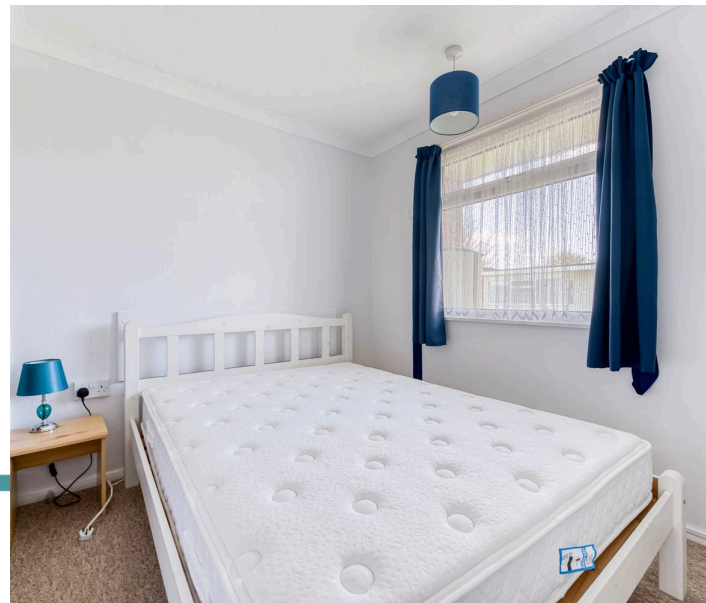
151 Sunbeach Holiday Park, California Road

Great Yarmouth

Location

California Road is a residential street located in the coastal area of California, Norfolk, ideally situated between the seaside villages of Scratby, Ormesby, and Caister-on-Sea, with Great Yarmouth just a short drive away. The area enjoys a peaceful coastal atmosphere, with sandy beaches and promenades within easy reach, making it popular with families and retirees. Local amenities are conveniently accessible: small convenience stores and cafés line nearby streets, while larger supermarkets and shopping facilities are available in Great Yarmouth. Families are served by a range of schools, including local primary schools in Scratby and Ormesby, and secondary education options in Caister-on-Sea.

Healthcare needs are met by nearby GP practices and medical centres, with James Paget University Hospital in Gorleston providing more extensive services. The location benefits from excellent transport links: regular bus services connect residents to Great Yarmouth, Lowestoft, and Norwich, while the A149 road provides easy car access along the coast.



M&B

151 Sunbeach Holiday Park, California Road

Great Yarmouth

Located within the friendly and welcoming Sunbeach Holiday Park, this holiday chalet provides a relaxed coastal lifestyle. The living room is bright and full of natural light, creating an inviting space to unwind, spend time with family, or entertain guests.

The kitchen features wall and base cabinets, a freestanding oven, and space for a fridge, making meal preparation easy and enjoyable.

Two comfortable bedrooms offer restful accommodation for families or friends, while the modern bathroom with a three-piece suite adds contemporary convenience.

Outside, the well-maintained communal grounds provide space to enjoy the outdoors, from leisurely walks to moments of fresh air in a safe and welcoming environment. On-site parking allows easy access to your holiday home.

On the park, you'll find a swimming pool, regular entertainment, a restaurant, and the Dutchy Bar, providing a full range of social and leisure activities. With comfort, convenience, and a friendly community on your doorstep, this chalet makes it simple to enjoy everything the Norfolk coast has to offer.



M&B

Ground Floor
350 sq.ft. (32.5 sq.m.) approx.



TOTAL FLOOR AREA : 350 sq.ft. (32.5 sq.m.) approx.

Whilst every attempt has been made to ensure the accuracy of the floorplan contained here, measurements of doors, windows, rooms and any other items are approximate and no responsibility is taken for any error, omission or mis-statement. This plan is for illustrative purposes only and should be used as such by any prospective purchaser. The services, systems and appliances shown have not been tested and no guarantee as to their operability or efficiency can be given.
Made with Metropix ©2026

Dreaming of this home? Let's make it a *reality*



Meet *Sarah*
Senior Property Consultant



Meet *James*
Property Consultant



Meet *Lauren*
Property Consultant

Minors & Brady
Your home, our market

 caister@minorsandbrady.co.uk

 01493 806188

 48 High Street, Caister-on-Sea, Great Yarmouth, NR30 5EH

CAISTER-ON-SEA | DEREHAM | DISS | NORWICH | OULTON BROAD | WROXHAM



How can we support

- ✓ Residential Mortgages
- ✓ Protection & Insurance
- ✓ Buy-to-let (personal and limited company)



Matt Waters
Director and
Principal



Victoria Payne
Mortgage and
Protection Advisor

Offering you quick and professional mortgage advice every step of the way.

T: 01603 210378
E: enquiries@norfolk-mortgages.co.uk