



16 Somerleyton Road, Oulton

Lowestoft



Minors & Brady

16 Somerleyton Road

Oulton, Lowestoft

A place where everyday living feels easy and wonderfully uncomplicated, this detached Oulton bungalow combines bright interiors with a generous plot and a welcoming sense of space. Thoughtfully presented and ready to enjoy, it features a 17ft bay-fronted living room with a wood burner, an open-plan kitchen/dining room with modern finishes, three comfortable bedrooms and a contemporary shower room. The well-kept rear garden offers room for outdoor dining, gardening and hobbies, complemented by a neat front garden, driveway parking and a garage. A turn-key coastal home in a sought-after setting, offering comfort, convenience and plenty of lifestyle appeal.

Agents Notes

Freehold

Connected to mains water, electricity, gas and drainage.





M&B

16 Somerleyton Road

Oulton, Lowestoft

- Offered chain free
- Detached bungalow positioned on a lovely-sized plot within the desirable area of Oulton, within the coastal town of Lowestoft
- Turn-key interior that is bright and airy, ready to adapt to your own preferences and style
- Spacious 17ft living room accentuated by a wood burner and a large front-facing bay window
- Open-plan kitchen/dining room equipped with modern cabinetry, an integrated oven, a sink below a window that overlooks the garden and areas for your own appliances
- Three bedrooms offering comfort and privacy, one of which is a principal with built-in storage
- Stylish shower room comprising of a contemporary three-piece suite, along with vanity storage
- A private, well-maintained garden featuring a patio for seating, a laid to lawn, established planting, a timber storage shed/workshop and a greenhouse
- Kerb appeal with a beautifully maintained front garden, a paved driveway providing off-road parking and a garage for storage use
- Easy access to shops, schools, parks and transport links



M&B

16 Somerleyton Road

Oulton, Lowestoft

Oulton, Lowestoft

Somerleyton Road is situated in the residential area of Oulton, on the northern edge of Lowestoft, offering a quiet suburban environment while remaining well-connected to local amenities. Grocery shopping is easily accessible with ALDI on Millennium Way and a Tesco superstore just a short drive away, while North Quay Retail Park nearby offers a wider range of stores, including homeware, electronics, and fashion outlets, alongside additional supermarkets and retail conveniences.

For families, the area has good educational options. Woods Loke Primary School is within walking distance, catering to younger children, and Benjamin Britten Academy of Music and Mathematics serves secondary students. Other nearby schools include The Limes Primary Academy and Ormiston Denes Academy, all reachable within a short drive or bus journey.

Transport links around Somerleyton Road are practical. Local buses run along Oulton Road, connecting residents to Lowestoft town centre, the seafront, and surrounding villages. Oulton Broad North and Oulton Broad South railway stations are a few minutes' drive away, offering services toward Norwich, Ipswich, and beyond. The nearby A146 and A1117 provide convenient routes for drivers heading to wider regional destinations.



16 Somerleyton Road

Oulton, Lowestoft

A porch opens into a light entrance hall, ideal for coats, shoes and everyday essentials. The hallway flows through to the main living spaces, where mosaic parquet flooring adds character and continuity.

The 17ft living room is a standout feature, enhanced by a large front-facing bay window that fills the room with natural light, and a wood burner that creates a warm focal point.

To the rear, the open-plan kitchen/dining room offers an inviting space for everyday living and entertaining. Modern cabinetry, an integrated oven and a sink positioned beneath a garden-view window make the kitchen both practical and pleasant, while herringbone flooring adds a contemporary finish. There is ample space for your own appliances and a dining area.

The property provides three well-proportioned bedrooms, each offering comfort and privacy. The principal bedroom benefits from built-in storage. A stylish shower room completes the accommodation, fitted with a contemporary three-piece suite and useful vanity storage.

The rear garden is a private and well-maintained haven, featuring a patio for seating, a lawned area, established planting and both a timber storage shed/workshop and a greenhouse, ideal for gardening enthusiasts.

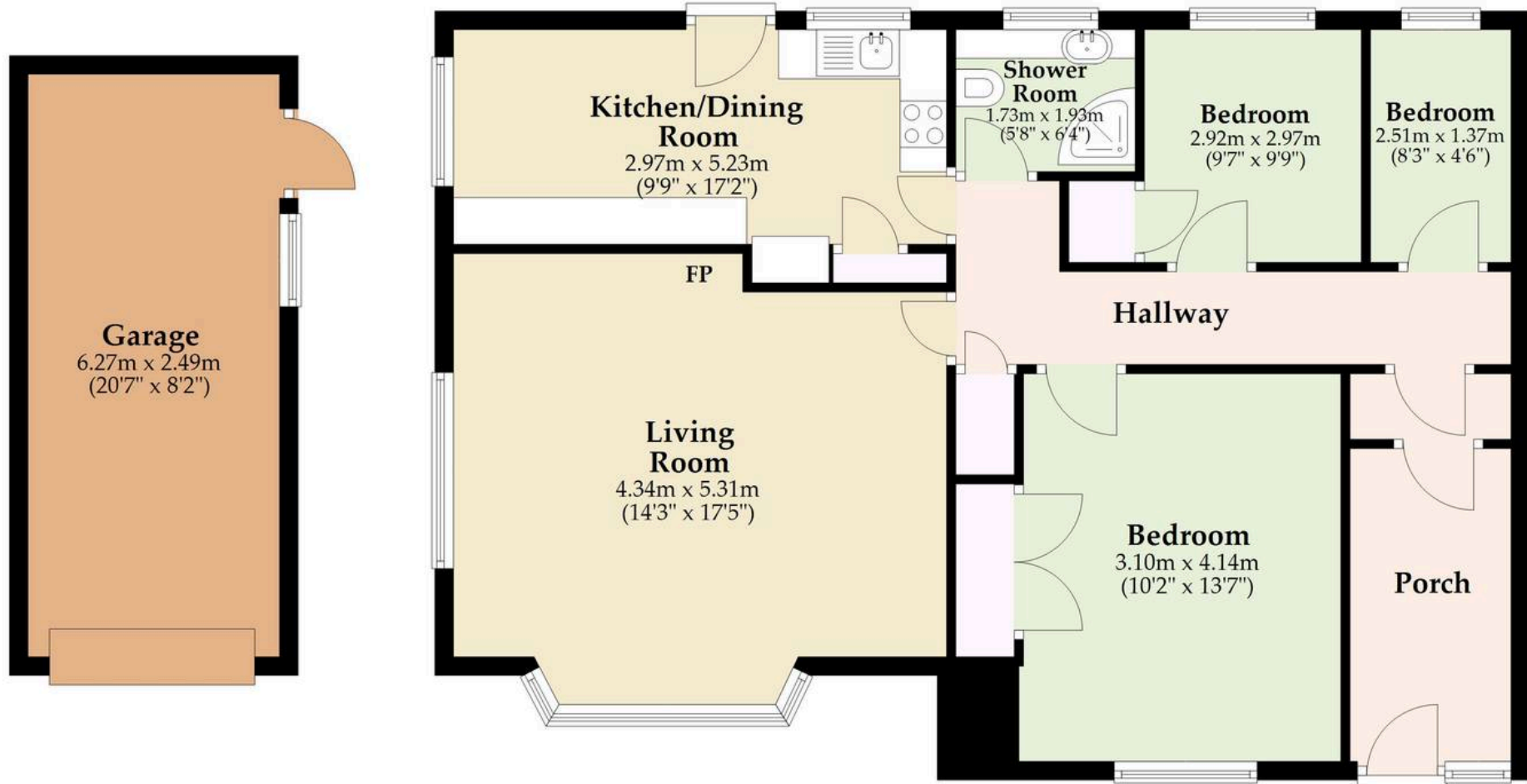
To the front, the property enjoys strong kerb appeal with a beautifully kept garden and a paved driveway providing off-road parking, leading to a garage suitable for storage.



M&B

Ground Floor

Approx. 101.6 sq. metres (1093.2 sq. feet)



Total area: approx. 101.6 sq. metres (1093.2 sq. feet)

Sqft excludes hall, landing and garage.

Whilst every attempt has been made to ensure the accuracy of the floorplan contained here, measurements of doors, windows, rooms and any other items are approximate and no responsibility is taken for any error, omission or mis-statement. This plan is for illustrative purposes only and should be used as such by any prospective purchaser. The services, systems and appliances shown have not been tested and no guarantee as to their operability or efficiency can be given.

Plan produced using PlanUp.

Dreaming of this home? Let's make it a *reality*.



Meet *Macey*
Branch Manager



Meet *Bradley*
Senior Property Lister



Meet *Ollee*
Senior Property Consultant

Minors & Brady
Your home, our market

 oultonbroad@minorsandbrady.co.uk

 01502 447788

 Ivy Lane, Oulton Broad, NR33 8QH

CAISTER-ON-SEA | DEREHAM | DISS | LETTINGS | NORWICH | OULTON BROAD | WROXHAM



How can we support

- ✓ Residential Mortgages
- ✓ Protection & Insurance
- ✓ Buy-to-let (personal and limited company)



Matt Waters
Director and
Principal



Victoria Payne
Mortgage and
Protection Advisor

Offering you quick and professional mortgage advice every step of the way.

T: 01603 210378
E: enquiries@norfolk-mortgages.co.uk