



## 4 Jubilee Court, Foxley

£380,000 Freehold

This attractive chain-free home offers a wonderful sense of space and light from the moment you step inside, with a welcoming layout perfectly suited to relaxed family living. The heart of the property is the stylish open-plan kitchen and dining area, designed for both everyday life and entertaining, with French doors opening onto the garden to create a seamless indoor-outdoor feel. Flexible living is a key feature, with additional ground floor space that can easily adapt to your needs, whether as a bedroom, study, or snug. Upstairs, the home continues to impress with well-proportioned rooms, including a comfortable principal bedroom. Outside, the property truly shines, with a private rear garden enjoying leafy woodland views, offering a calm and scenic backdrop throughout the seasons. Tucked away in a quiet rural setting, this home combines modern comfort with a sense of tranquillity, making it an ideal escape from the pace of everyday life.

Council Tax band: D

Tenure: Freehold

This attractive chain-free home offers a wonderful sense of space and light from the moment you step inside, with a welcoming layout perfectly suited to relaxed family living. The heart of the property is the stylish open-plan kitchen and dining area, designed for both everyday life and entertaining, with French doors opening onto the garden to create a seamless indoor-outdoor feel. Flexible living is a key feature, with additional ground floor space that can easily adapt to your needs, whether as a bedroom, study, or snug. Upstairs, the home continues to impress with well-proportioned rooms, including a comfortable principal bedroom. Outside, the property truly shines, with a private rear garden enjoying leafy woodland views, offering a calm and scenic backdrop throughout the seasons. Tucked away in a quiet rural setting, this home combines modern comfort with a sense of tranquillity, making it an ideal escape from the pace of everyday life.

### Location

Foxley is a rural village situated in central Norfolk, approximately 6 miles



This attractive chain-free home offers a wonderful sense of space and light from the moment you step inside, with a welcoming layout perfectly suited to relaxed family living. The heart of the property is the stylish open-plan kitchen and dining area, designed for both everyday life and entertaining, with French doors opening onto the garden to create a seamless indoor-outdoor feel. Flexible living is a key feature, with additional ground floor space that can easily adapt to your needs, whether as a bedroom, study, or snug. Upstairs, the home continues to impress with well



This attractive chain-free home offers a wonderful sense of space and light from the moment you step inside, with a welcoming layout perfectly suited to relaxed family living. The heart of the property is the stylish open-plan kitchen and dining area, designed for both everyday life and entertaining, with French doors opening onto the garden to create a seamless indoor-outdoor feel. Flexible living is a key feature, with additional ground floor space that can easily adapt to your needs, whether as a bedroom, study, or snug. Upstairs, the home continues to impress with well-proportioned rooms, including a comfortable principal bedroom. Outside, the property truly shines, with a private rear garden enjoying leafy woodland views, offering a calm and scenic backdrop throughout the seasons. Tucked away in a quiet rural setting, this home combines modern comfort with a sense of tranquillity, making it an ideal escape from the pace of everyday life.

### Location

Foxley is a rural village situated in central Norfolk, approximately 6 miles north-east of Dereham and around 15 miles north-west of the city of Norwich. Located along the A1067, a key route between Fakenham and Norwich, the village offers a peaceful countryside setting while remaining within convenient reach of larger towns and amenities.

Although Foxley itself is small and has limited local services, nearby villages such as Bawdeswell and Foulsham—both within a couple of miles—offer essential amenities including a convenience store, post office, and primary schools. Secondary education is accessible in the nearby market town of Reepham, home to the well-regarded Reepham High School and College.

Healthcare needs are served by local GP surgeries in Swanton Morley and North Elmham, with more comprehensive medical services available at Dereham Hospital or the Norfolk and Norwich University Hospital.

Transport links are reasonable for a rural area; regular bus services along the A1067 connect residents to both Dereham and Norwich, where wider shopping, healthcare, and employment options are available. While Foxley lacks a train station, rail access is possible via Wymondham or Norwich, both offering connections to the national rail network. The area is also well-known for Foxley Wood, a large nature reserve just outside the village, providing excellent walking routes and seasonal wildlife attractions.

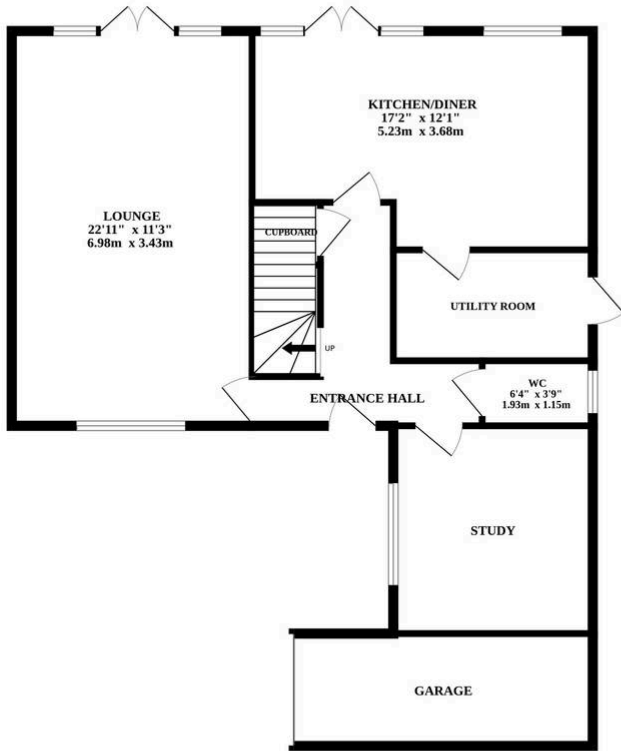
### Jubilee Court



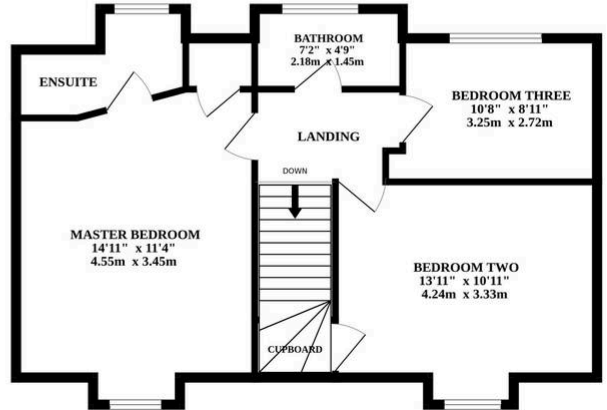
pump.

Council tax band - D

GROUND FLOOR



1ST FLOOR



Whilst every attempt has been made to ensure the accuracy of the floorplan contained here, measurements of doors, windows, rooms and any other items are approximate and no responsibility is taken for any error, omission or mis-statement. This plan is for illustrative purposes only and should be used as such by any prospective purchaser. The services, systems and appliances shown have not been tested and no guarantee as to their operability or efficiency can be given.  
Made with Metropix ©2024

You can include any text here. The text can be modified upon generating your brochure.

You can include any text here. The text can be modified upon generating your brochure.

