



10 Webdell Court, Norwich

Norwich



£130,000
Minors & Brady

10 Webdell Court

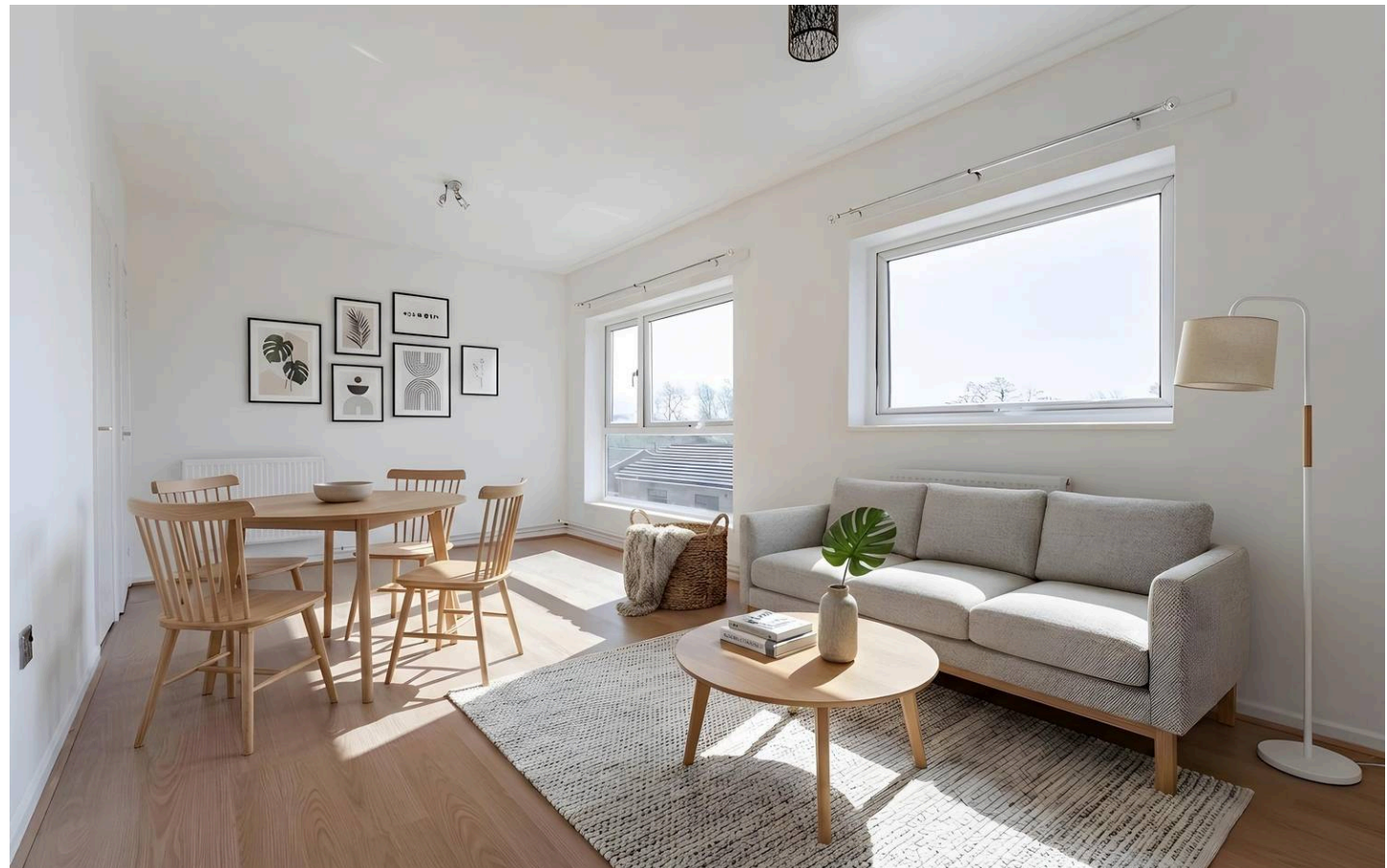
Set within Old Lakenham, this property enjoys a convenient yet residential setting, with a good balance of local amenities, transport links and access to Norwich city centre. Inside, the home offers a bright and practical layout with a welcoming feel throughout. The entrance hall provides access to the main rooms along with useful storage. The kitchen is fitted with a range of units and space for everyday appliances, designed for functional use. A spacious living room benefits from large windows, creating a light and comfortable area for relaxation or entertaining. There are two well-sized double bedrooms, both offering good space for furniture and storage, along with a modern bathroom fitted with a bath and overhead shower. Overall, the property combines comfortable living space with a well-connected and convenient location.

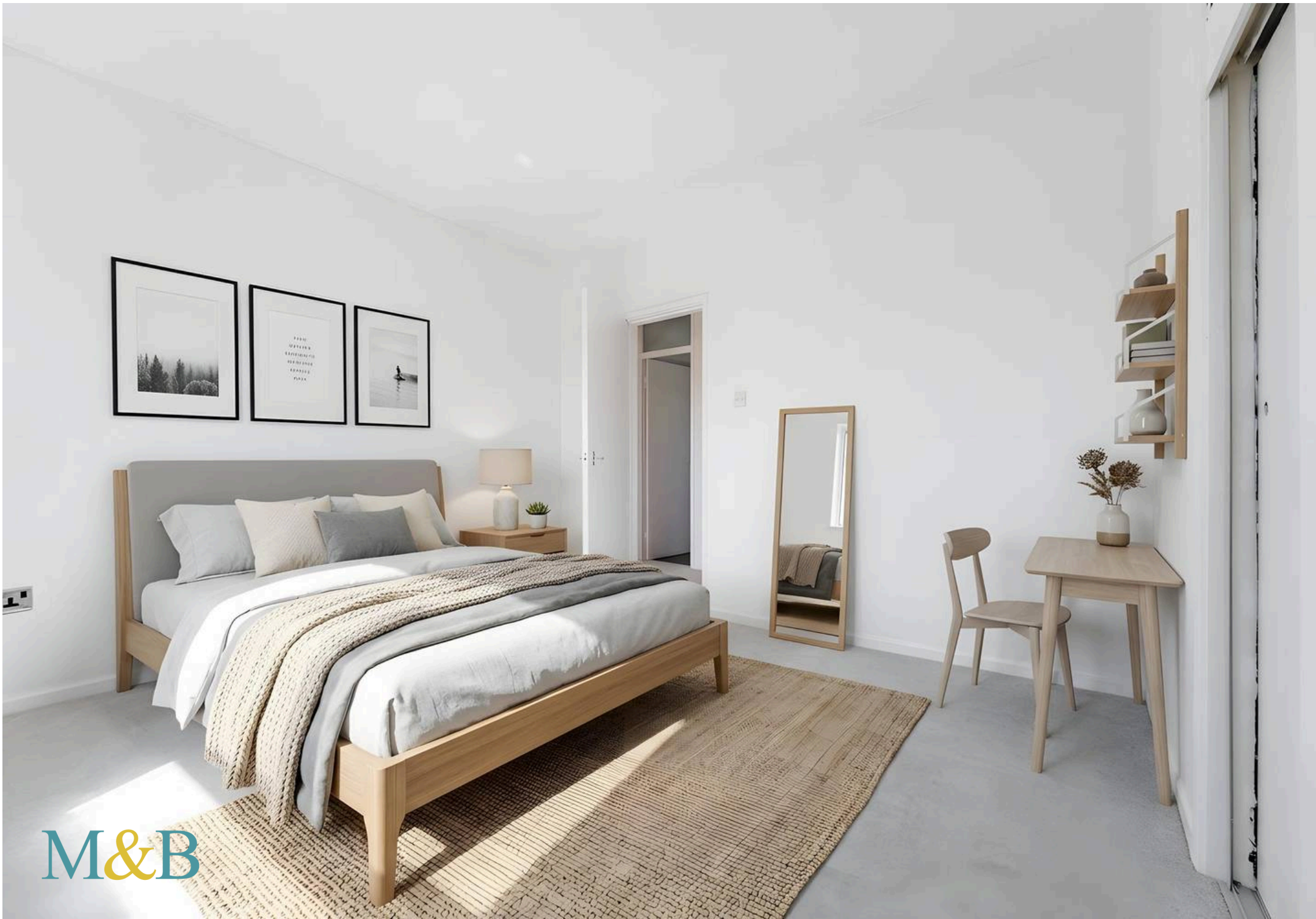
Lease: 125 years from 17th May 2004.

Ground Rent: £10 paid annually.

Service charge: £390 paid annually.

Some images used in this listing have been digitally staged to illustrate potential furnishing and layout options. We recommend arranging a viewing to assess the space and features in person.





M&B

Webdell Court, Norwich

This well-presented property offers spacious and comfortable accommodation throughout, finished in neutral tones to suit a variety of tastes. It is ideal for those seeking a practical layout with good natural light and a welcoming feel.

The entrance leads into a hallway providing access to the main living areas and useful storage space. The kitchen is fitted with a range of wall and base units and offers space for everyday appliances, along with work surfaces suitable for food preparation.

The living room is a bright and generously sized space, featuring large windows that allow plenty of natural light. It provides a comfortable setting for both relaxing and entertaining.

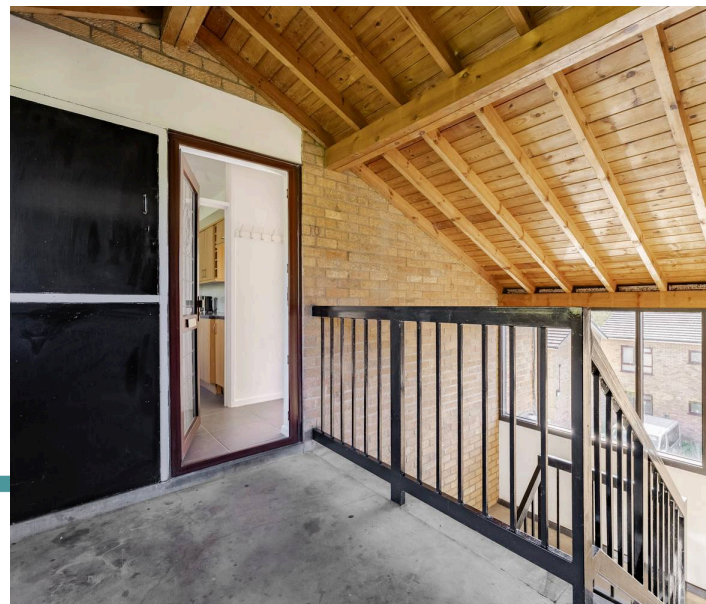
The property includes a bathroom fitted with a modern-style suite, incorporating a bath with shower over, along with a wash basin and WC. There are two well-proportioned double bedrooms, each offering ample space for furnishings and storage, with a calm and neutral décor throughout.

Overall, the property benefits from a practical layout, good room sizes, and a bright, airy feel, making it a suitable home for a range of occupants.

Agents Note

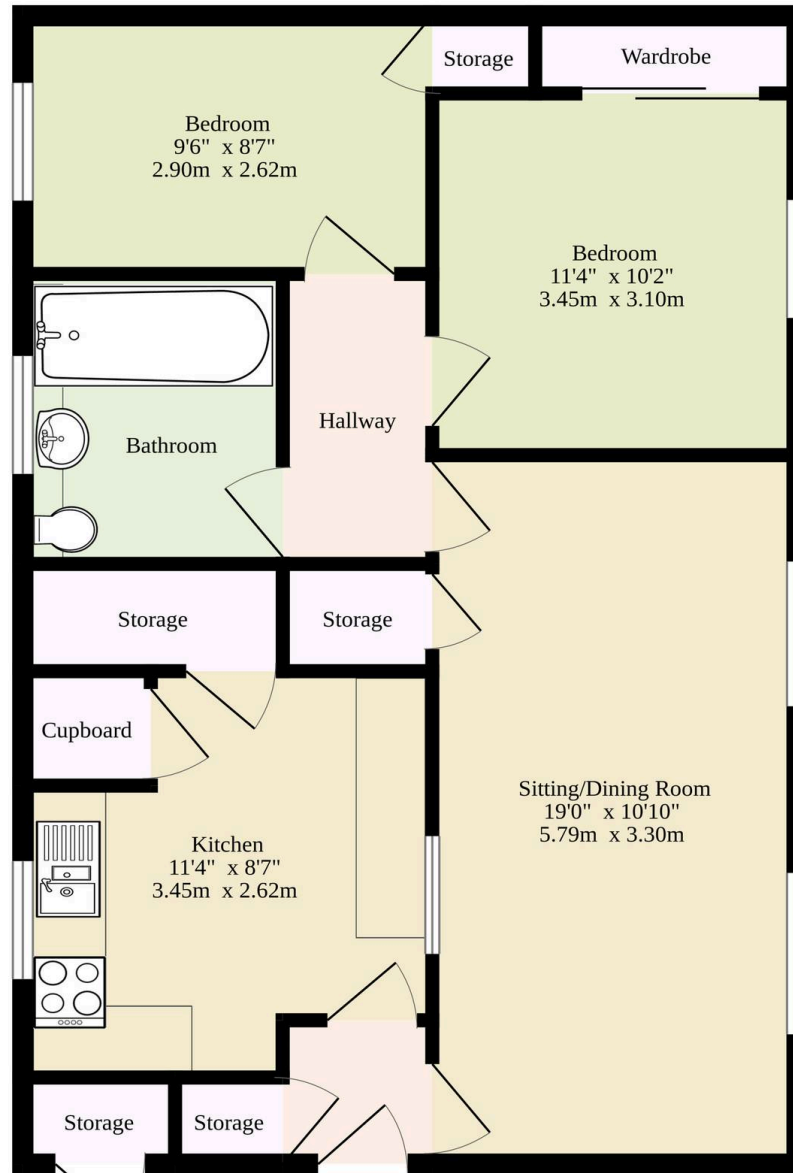
The vendor has stated that the property includes one allocated parking space; however, this has not been verified by us and is not shown on the title plan or register. All purchasers should carry out their own due diligence.

This property will be sold leasehold & connected to mains water, electricity, gas and drainage.



M&B

579 sq.ft. (53.8 sq.m.) approx.



TOTAL FLOOR AREA : 579 sq.ft. (53.8 sq.m.) approx.

Whilst every attempt has been made to ensure the accuracy of the floorplan contained here, measurements of doors, windows, rooms and any other items are approximate and no responsibility is taken for any error, omission or mis-statement. This plan is for illustrative purposes only and should be used as such by any prospective purchaser. The services, systems and appliances shown have not been tested and no guarantee as to their operability or efficiency can be given.
Made with Metropix ©2026

Dreaming of this home? Let's make it a *reality*.



Meet *Liam*
Branch Manager



Meet *Nagilla*
Aftersales Team Leader



Meet *Tristan*
Senior Property Lister

Minors & Brady
Your home, our market

 norwich@minorsandbrady.co.uk

 01603 365085

 107 Unthank Road, Norwich, NR2 2PE

CAISTER-ON-SEA | DEREHAM | DISS | NORWICH | OULTON BROAD | WROXHAM



How can we support

- ✓ Residential Mortgages
- ✓ Protection & Insurance
- ✓ Buy-to-let (personal and limited company)



Matt Waters
Director and
Principal



Victoria Payne
Mortgage and
Protection Advisor

Offering you quick and professional mortgage advice every step of the way.

T: 01603 210378
E: enquiries@norfolk-mortgages.co.uk