



13 Apollo Crescent, Norwich

Norwich

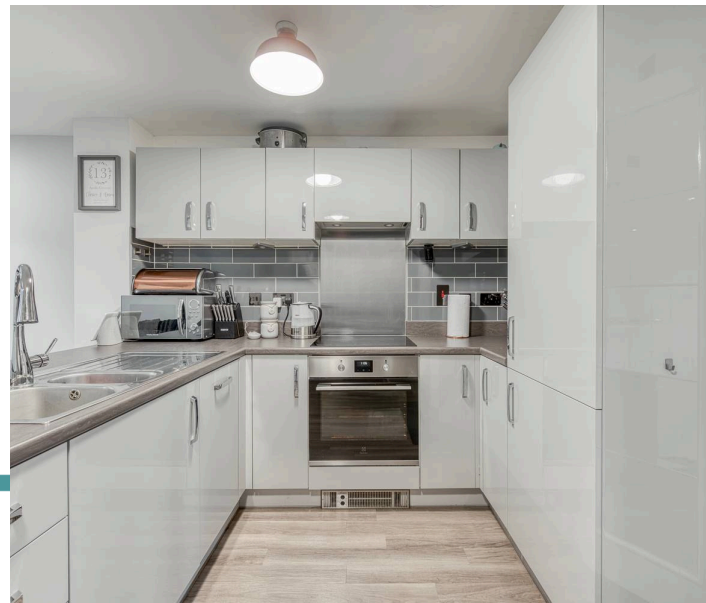


Minors & Brady

13 Apollo Crescent

This modern end-terrace home on the Hampden View estate in New Costessey presents an appealing option for those seeking a ready-to-move-into property. The layout is designed with practicality in mind, offering a smooth flow between living spaces and a bright, sociable ground floor arrangement. Natural light enhances the main living area, which connects directly to the outdoor space for easy indoor-outdoor living. On the upper level, the property provides two well-proportioned bedrooms that are finished to a high standard. The main bedroom includes its own private bathroom facilities, adding extra comfort and privacy. Externally, the home benefits from a secure garden and convenient off-road parking suitable for multiple vehicles. Overall, it delivers a low-maintenance and contemporary lifestyle in a sought-after residential setting.

- Modern two-bedroom end-terrace home in a popular residential estate
- Ideal opportunity for first-time buyers seeking a move-in ready property
- Welcoming entrance hall with useful built-in storage space
- Bright open-plan lounge and kitchen with excellent natural light
- French doors providing direct access to the rear garden
- Contemporary fitted kitchen with integrated appliances and storage units
- Two well-proportioned bedrooms
- Main bedroom benefits from a private en-suite shower room
- Family bathroom includes both bath and separate shower facilities
- Enclosed rear garden plus driveway parking for two vehicles





M&B

13 Apollo Crescent

The Location

Located in the highly sought-after area of Costessey on Apollo Crescent, Norwich, this home offers the perfect balance between city living and easy access to surrounding countryside. Just a short drive from Norwich city centre, residents benefit from a wide range of nearby amenities including well-regarded schools, green spaces, and convenient shopping facilities, making it ideal for both families and professionals.

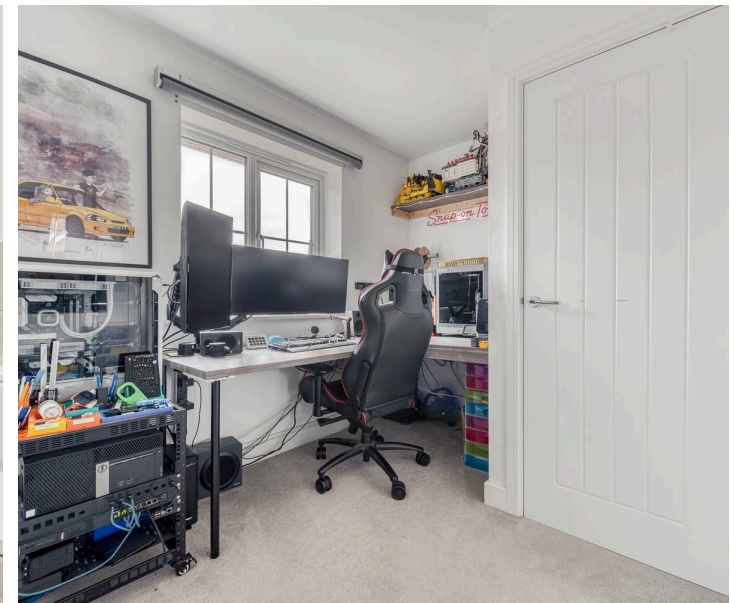
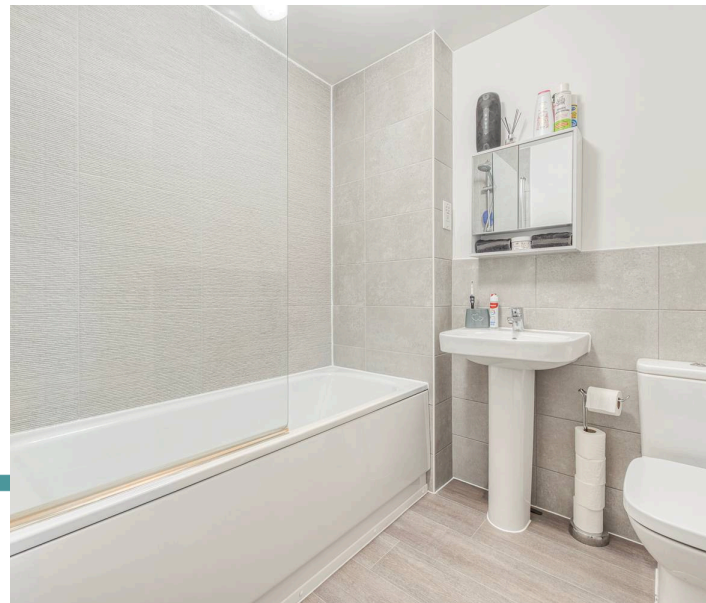
Families will particularly appreciate the abundance of nearby parks and open green spaces within Costessey and the wider Norwich area, perfect for weekend walks, outdoor activities, and relaxation.

The property is also exceptionally well connected for commuters. Excellent public transport links are available via local bus routes, providing direct access into key destinations including the Norfolk and Norwich University Hospital, the University of East Anglia, and Norwich city centre itself. For added convenience, residents can also take advantage of the nearby Norwich Park and Ride service, offering easy and stress-free travel into the city.

Everyday essentials are close at hand, with excellent road connectivity including quick access to the A47, making travel across Norfolk and beyond straightforward. Nearby retail and leisure options include the popular Longwater Retail Park, which is home to a variety of shops and eateries.

Further local investment and development continue to enhance the area, with the nearby Norfolk Food Hall offering fresh local produce and food experiences, and new retail additions such as a forthcoming TK Maxx store opening near Next further boosting convenience and choice for residents.

Overall, this is a well-connected and fast-developing location that combines lifestyle, accessibility, and strong local amenities in one attractive package.



13 Apollo Crescent

Apollo Crescent, Norwich

This modern two-bedroom end terrace house offers a fantastic opportunity, especially for first-time buyers seeking a stylish and practical home in a popular location. Set on the well-regarded Hampden View estate in New Costessey, the property combines contemporary living with convenient features designed to suit everyday needs.

Step inside to a welcoming entrance hall that leads seamlessly to all rooms and includes useful storage space. The heart of the home is the open-plan lounge and kitchen, where natural light floods through French doors opening onto the rear garden.

The kitchen is thoughtfully fitted with a range of units and modern appliances, creating an ideal space for cooking and socialising.

Upstairs, you'll find two comfortable bedrooms, each offering ample room and finished with practical touches such as fitted wardrobes and quality window shutters. The main bedroom benefits from a private en-suite, adding a touch of luxury, while the family bathroom features both a bath and shower, providing convenience for all.

Outside, the enclosed rear garden provides a peaceful and secure space for relaxation or entertaining. To the side, the driveway offers parking for two cars, a valuable addition for busy households or visitors.

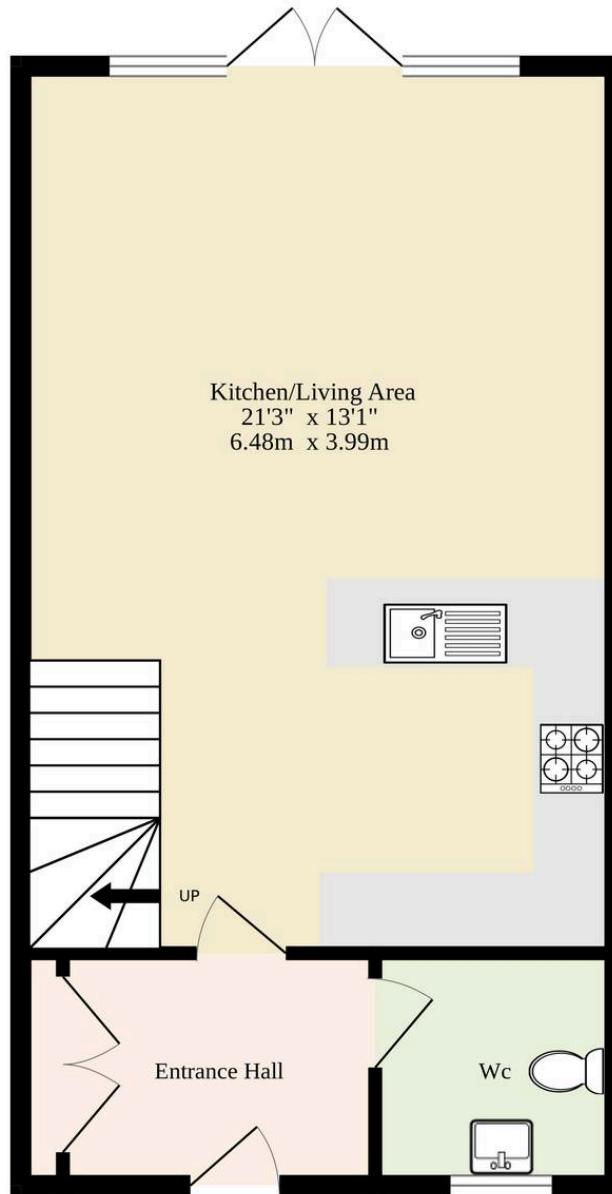
This home is perfectly suited for those looking to step onto the property ladder with a move-in ready, modern home in a thriving community.

Agents Note

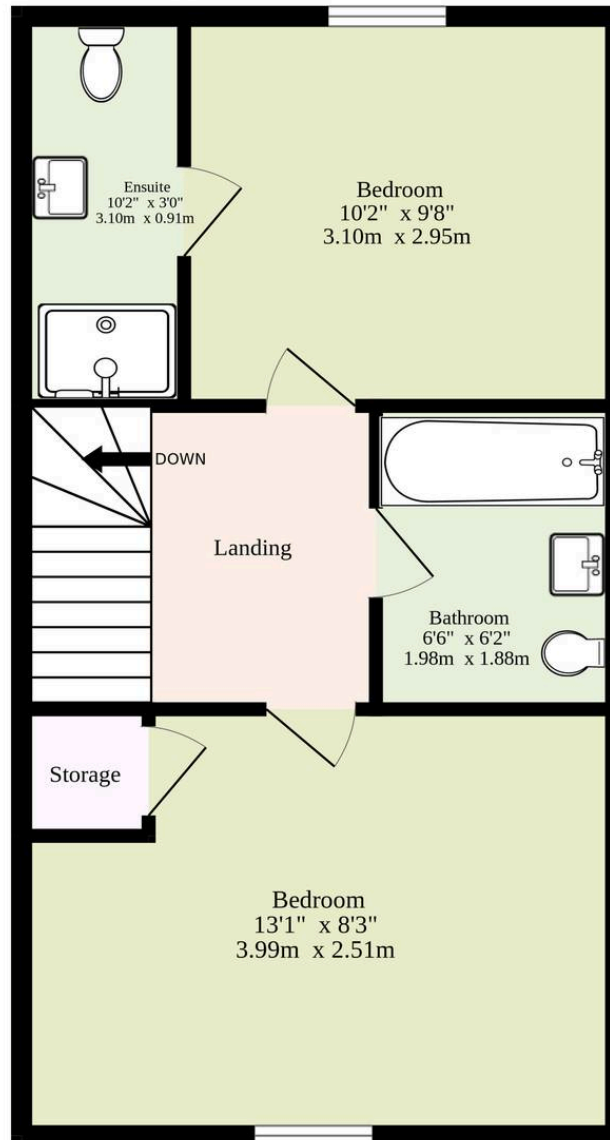
This property will be sold freehold and connected to mains water, electricity, gas and drainage.



Ground Floor
320 sq.ft. (29.7 sq.m.) approx.



1st Floor
323 sq.ft. (30.0 sq.m.) approx.



TOTAL FLOOR AREA : 643 sq.ft. (59.7 sq.m.) approx.

Whilst every attempt has been made to ensure the accuracy of the floorplan contained here, measurements of doors, windows, rooms and any other items are approximate and no responsibility is taken for any error, omission or mis-statement. This plan is for illustrative purposes only and should be used as such by any prospective purchaser. The services, systems and appliances shown have not been tested and no guarantee as to their operability or efficiency can be given.
Made with Metropix ©2026

Dreaming of this home? Let's make it a *reality*.



Meet *Liam*
Branch Manager



Meet *Nagilla*
Aftersales Team Leader



Meet *Tristan*
Senior Property Lister

Minors & Brady
Your home, our market

 norwich@minorsandbrady.co.uk

 01603 365085

 107 Unthank Road, Norwich, NR2 2PE

CAISTER-ON-SEA | DEREHAM | DISS | NORWICH | OULTON BROAD | WROXHAM



How can we support

- ✓ Residential Mortgages
- ✓ Protection & Insurance
- ✓ Buy-to-let (personal and limited company)



Matt Waters
Director and
Principal



Victoria Payne
Mortgage and
Protection Advisor

Offering you quick and professional mortgage advice every step of the way.

T: 01603 210378
E: enquiries@norfolk-mortgages.co.uk