



38 Bury Street, Norwich

Norwich

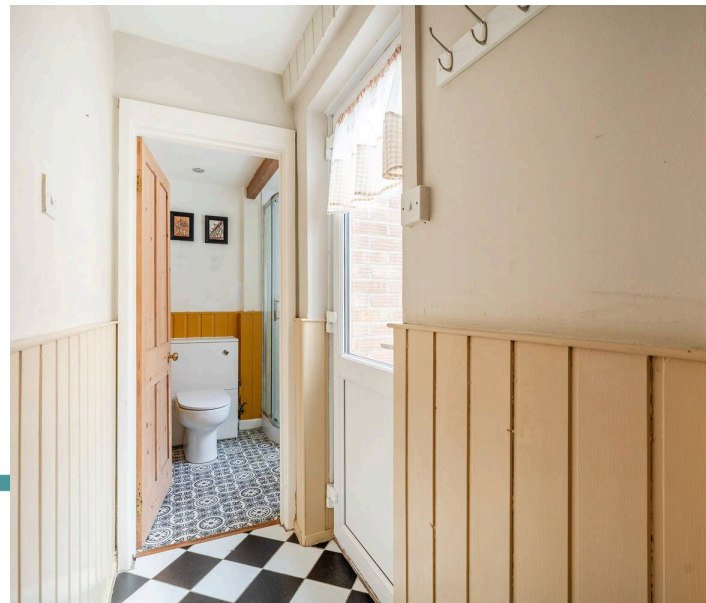


Minors & Brady

## 38 Bury Street

Tucked away in the heart of Norwich's sought-after Golden Triangle, this beautifully presented Victorian mid-terrace delivers character, style and city-edge living in equal measure. Brimming with original features, the double reception rooms set the tone with decorative fireplaces and a warm, welcoming feel throughout. The stylishly updated kitchen pairs bold checkerboard flooring with sleek cabinetry and brass accents, effortlessly blending classic charm with modern flair. Upstairs, two generous double bedrooms are complemented by smart shower rooms, including a contemporary en-suite to the rear bedroom for added luxury. Outside, a private, low-maintenance courtyard garden offers the perfect spot to unwind away from the bustle. With cafes, shops, transport links and the city centre all within easy reach, this is Golden Triangle living at its best. A characterful home with serious lifestyle appeal—early viewing is a must.

- Sought-after Golden Triangle location just moments from the city centre
- Attractive Victorian mid-terrace rich in period charm
- Two light-filled reception rooms with fireplaces and carpeting
- Stylishly modernised kitchen with bold checkerboard tiling and brass details
- Handy downstairs shower room for everyday convenience
- Two spacious double bedrooms with built-in storage
- Contemporary en-suite shower room to the rear bedroom
- Private, low-maintenance enclosed rear courtyard garden
- Walking distance to cafes, shops, restaurants and transport links
- Ideal for first-time buyers or investors seeking character and lifestyle appeal





M&B

## 38 Bury Street

### The Location

Placed in the heart of Norwich's popular Golden Triangle, this home enjoys one of the most desirable positions in the city. Just a short walk from the city centre, it offers easy access to a wide range of amenities while maintaining a relaxed residential feel.

The area is well known for its mix of independent cafes, local shops, and cosy pubs. Nearby favourites include the Georgian Townhouse, perfect for meeting friends or enjoying a quiet meal, and the beautifully maintained Plantation Gardens, ideal for an afternoon walk.

You'll also find excellent local spots like Blue Joanna, known for its vibrant cocktails and live music, and the William & Florence, a stylish gastropub popular with locals. Everything you need for day-to-day living is close by, including supermarkets, schools, and regular public transport.

Excellent bus links make commuting straightforward, with routes running directly to the city centre, train station, and surrounding areas. The nearby bus station also offers services to Cambridge, London, and other major destinations, giving you flexibility whether you're travelling for work or leisure.

This location combines convenience, character, and a strong sense of community, ideal for anyone looking to enjoy the best of city living with everything close to hand, including an easy and pleasant walk into Norwich city centre.



M&B

## 38 Bury Street

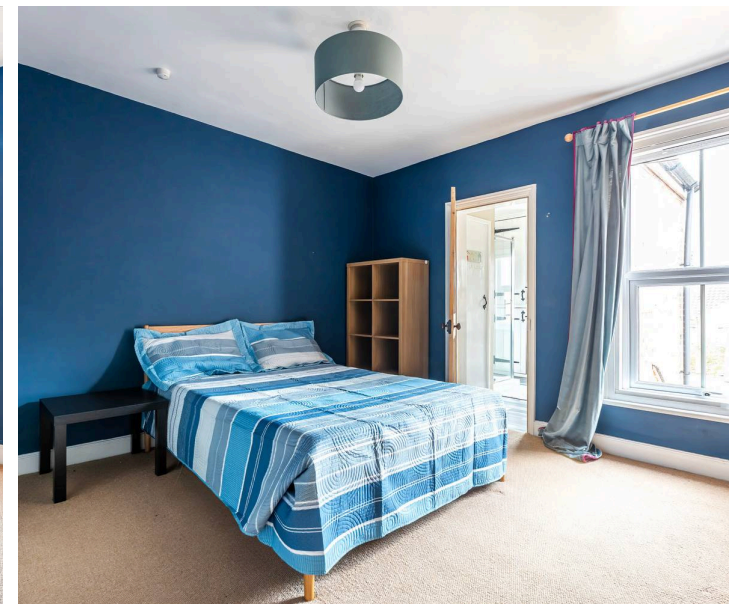
### Bury Street, Norwich

Set in the heart of Norwich's ever-popular Golden Triangle, this charming Victorian mid-terrace home offers a wonderful blend of period character and modern comfort. Perfectly suited to first-time buyers or investors, the property enjoys a prime position just outside the city centre while remaining within easy walking distance of shops, cafes, restaurants and excellent transport links.

On the ground floor, the home benefits from two well-proportioned reception rooms, both filled with natural light and rich in character. Each room features a decorative fireplace and picture rails, creating warm and inviting living spaces ideal for relaxing or entertaining.

To the rear of the property, the kitchen has been thoughtfully modernised and pairs a striking checkerboard tiled floor with neutral cabinetry and work surfaces to create a stylish yet timeless finish. Brushed brass fixtures add a subtle touch of elegance, while a tiled splashback complements the contemporary design. The kitchen also offers excellent storage, generous worktop space and room for appliances, making it a highly practical space for everyday cooking.

Leading on from the kitchen is a downstairs shower room, providing added convenience and flexibility.



M&B

## 38 Bury Street

Upstairs, the property offers two generous double bedrooms, both attractively presented and benefiting from built-in storage. The rear bedroom enjoys the added luxury of a modern en-suite shower room, while the layout as a whole makes excellent use of the available space.

Outside, the enclosed rear garden has been designed to be low maintenance and private, with paved areas and space for outdoor seating or potted planting. Fully enclosed by brick walls, it provides a quiet retreat from city life and includes space for a shed.

Located moments from the vibrant amenities of the Golden Triangle and within easy reach of Norwich city centre, Riverside, the train station and major road links, this characterful home combines location, convenience and charm. Early viewing is strongly recommended to fully appreciate what this lovely property has to offer.

### Agents Note

This property will be sold freehold and connected to mains water, electricity, gas and drainage.



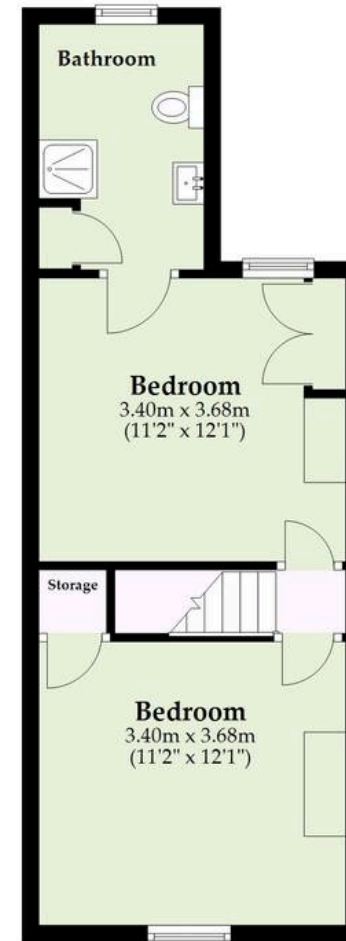
## Ground Floor

Approx. 39.5 sq. metres (425.0 sq. feet)



## First Floor

Approx. 34.7 sq. metres (373.7 sq. feet)



Total area: approx. 74.2 sq. metres (798.7 sq. feet)

Whilst every attempt has been made to ensure the accuracy of the floorplan contained here, measurements of doors, windows, rooms and any other items are approximate and no responsibility is taken for any error, omission or mis-statement. This plan is for illustrative purposes only and should be used as such by any prospective purchaser. The services, systems and appliances shown have not been tested and no guarantee as to their operability or efficiency can be given.

Plan produced using PlanUp.

# Dreaming of this home? Let's make it a *reality*.



Meet *Liam*  
Branch Manager



Meet *Nagilla*  
Aftersales Team Leader



Meet *Tristan*  
Senior Property Lister

Minors & Brady  
*Your home, our market*

 [norwich@minorsandbrady.co.uk](mailto:norwich@minorsandbrady.co.uk)

 01603 365085

 107 Unthank Road, Norwich, NR2 2PE

CAISTER-ON-SEA | DEREHAM | DISS | NORWICH | OULTON BROAD | WROXHAM



## How can we support

- ✓ Residential Mortgages
- ✓ Protection & Insurance
- ✓ Buy-to-let (personal and limited company)



**Matt Waters**  
Director and  
Principal



**Victoria Payne**  
Mortgage and  
Protection Advisor

Offering you quick and professional mortgage advice every step of the way.

T: 01603 210378  
E: [enquiries@norfolk-mortgages.co.uk](mailto:enquiries@norfolk-mortgages.co.uk)