



Hillcroft The Marrams, Sea Palling

Norwich



Minors & Brady

Hillcroft The Marrams

The Marrams is a cosy one-bedroom chalet just a short walk from Sea Palling beach, perfect for a simple seaside getaway. Inside, the open-plan living and dining area feels bright and welcoming, with plenty of natural light. The kitchen is practical and easy to use, while the double bedroom and shower room provide everything you need for a comfortable stay. Local shops, cafes, and schools are close by, making day-to-day life straightforward. The chalet's soft coastal colors and wooden-style floors give it a relaxed, beachy feel. It's an ideal spot for anyone looking for a low-maintenance coastal retreat.

- Just a short walk from Sea Palling beach
- One-bedroom chalet, ideal for a simple coastal retreat
- Bright open-plan living and dining area with plenty of natural light
- Fully fitted kitchen with space for appliances
- Comfortable double bedroom for restful stays
- Modern shower room, practical and easy to maintain
- Soft coastal colors and wooden-style flooring give a relaxed, beachy feel
- Local shops, cafes, and schools are nearby for convenience
- Quiet and private setting, perfect for unwinding
- Cash buyers only, suitable for those aware of coastal environmental factors

Agents Note

This property will be sold freehold and connected to mains water, electricity and private drainage.

Please note that the property does not follow standard construction specifications. Prospective buyers are responsible for conducting their own assessments to ensure satisfaction with all environmental factors. Purchase is by cash only.





M&B

The Location

The Marrams, located in the coastal village of Sea Palling, is a charming residential area offering proximity to key amenities and attractions. The village features a local convenience store, Sea Palling Village Store, just a short walk away, perfect for everyday essentials.

For dining options, there are popular spots for relaxed meals. Families will find Stalham Academy, a well-regarded primary school, approximately 5 miles away, with additional educational options in nearby towns like North Walsham, around 12 miles distant.

The bustling town of Stalham, just a 10-minute drive (5 miles), offers a Tesco Superstore and a variety of shops and cafes for broader shopping needs. The beautiful Sea Palling beach is only a short stroll from The Marrams, making it an ideal location for seaside living.

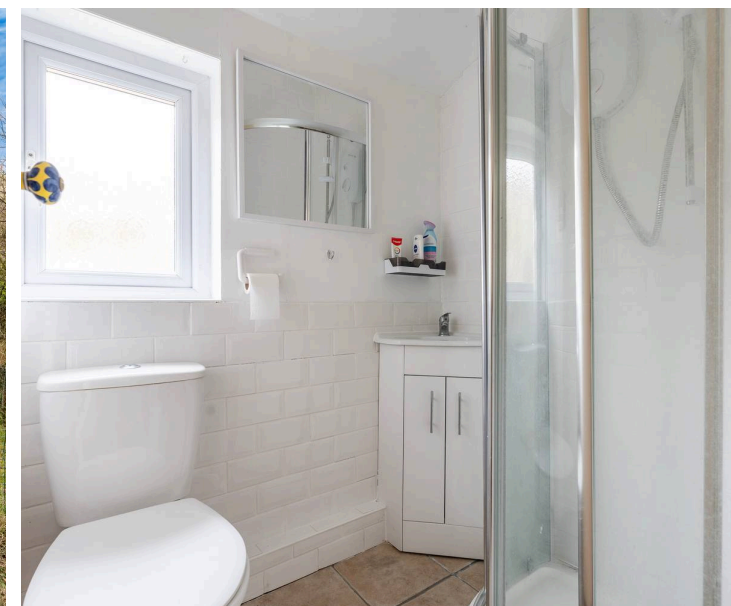
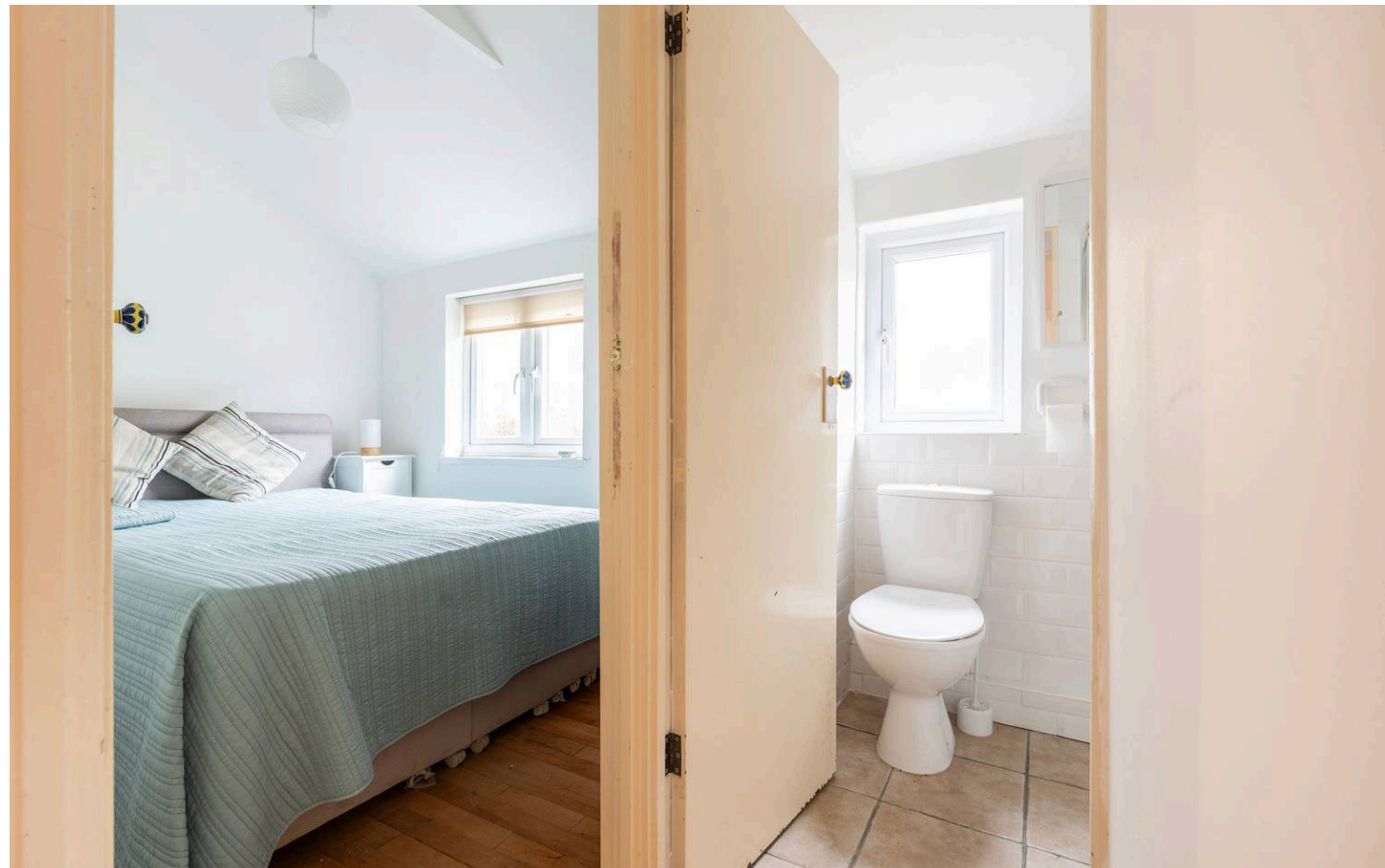
The Marrams, Sea Palling

This charming one-bedroom chalet offers a quiet and private retreat, just a short stroll from the beach. Fully self-contained, it provides independent living in a simple, seaside-inspired setting, perfect for those seeking a coastal escape.

The exterior is painted in blue tones, echoing the coastal theme, while French doors serve as a welcoming entrance into the chalet. Inside, the open-plan sitting and dining area benefits from a dual aspect, filling the space with natural light and creating a bright, airy atmosphere.

Wooden-style floors run throughout, adding warmth and a timeless, beachside character.

The kitchen is fully fitted and offers ample space for appliances, making it practical for everyday living or holiday stays. The chalet includes a comfortable double bedroom and a modern shower room, providing all the essentials for a relaxed stay.



M&B

Ground Floor

Approx. 31.1 sq. metres (334.4 sq. feet)



Total area: approx. 31.1 sq. metres (334.4 sq. feet)

Whilst every attempt has been made to ensure the accuracy of the floorplan contained here, measurements of doors, windows, rooms and any other items are approximate and no responsibility is taken for any error, omission or misstatement. This plan is for illustrative purposes only and should be used as such by any prospective purchaser. The services, systems and appliances shown have not been tested and no guarantee as to their operability or efficiency can be given.

Plan produced using PlanUp.

Dreaming of this home? Let's make it a *reality*.



Meet *Abi*
Branch Partner



Meet *Karol*
Property Lister



Meet *Claire*
Aftersales Team Leader

Minors & Brady
Your home, our market



wroxham@minorsandbrady.co.uk



01603 783088



6 Church Road, Wroxham, Norwich, NR12 8UG

CAISTER-ON-SEA | DEREHAM | DISS | NORWICH | OULTON BROAD | WROXHAM



How can we support

- ✓ Residential Mortgages
- ✓ Protection & Insurance
- ✓ Buy-to-let (personal and limited company)



Matt Waters
Director and
Principal



Victoria Payne
Mortgage and
Protection Advisor

Offering you quick and professional mortgage advice every step of the way.

T: 01603 210378
E: enquiries@norfolk-mortgages.co.uk