



24 Varvel Avenue, Norwich

Norwich



Minors & Brady

This exceptional three-bedroom semi-detached chalet bungalow has been extended and fully renovated to an impressive, high-quality finish, offering turnkey living with no onward chain. The home boasts a stunning open-plan kitchen and family room, finished with contemporary fittings and designed to maximise light, space and functionality. Significant investment has been made behind the scenes, including a brand-new gas central heating system, entirely new plumbing with copper pipework, and a full electrical rewire, delivering comfort, efficiency and long-term peace of mind. Accommodation is well balanced, with flexible living space including two en-suite bedrooms and thoughtfully designed practical areas such as a separate utility room. Externally, the property continues to impress with a private enclosed rear garden, a freshly laid gravel driveway and a detached garage with power. Every aspect of this home reflects quality craftsmanship, careful planning and modern living at its finest.

- Fully extended and comprehensively renovated to a high standard throughout, offering stylish, modern living with a true turnkey finish
- Outstanding open-plan kitchen and family room, finished with quality fittings, a central island and patio doors
- Brand-new gas central heating system installed
- Completely new plumbing system with copper pipework, ensuring modern performance throughout the home
- Three well-proportioned bedrooms, including two beautifully finished en-suite bathrooms, offering flexibility and comfort
- Separate utility room and ground floor WC, thoughtfully designed to enhance everyday practicality
- Private, enclosed rear garden, mainly laid to lawn and ideal for relaxing, entertaining or family use
- Detached garage with power, complemented by a newly laid gravel driveway providing ample off-road parking
- Offered with no onward chain





M&B

24 Varvel Avenue

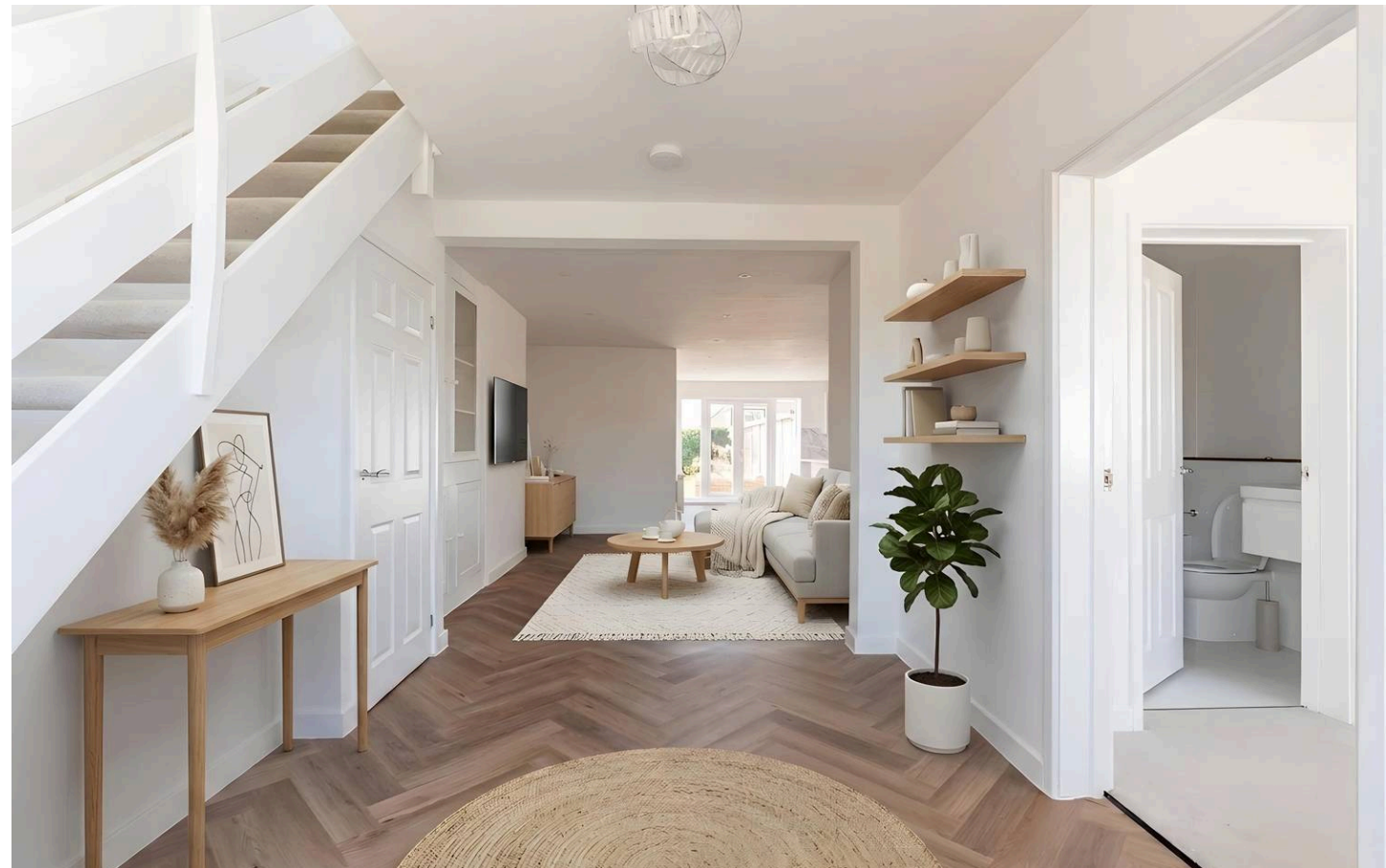
The Location

The property enjoys a fantastic position in the ever-popular and highly requested area of Sprowston, just two miles northeast of Norwich City Centre. This prime location combines suburban ease with excellent access into the city, where a vibrant mix of shops, restaurants, historic landmarks and leisure facilities await, from the charming lanes to the iconic Norwich Cathedral, it's all within easy reach.

Sprowston itself has become increasingly favoured thanks to its strong community feel and extensive local amenities. White House Farm is a standout, offering a renowned farm shop, traditional butchery, café, and even on-site beauty and hairdressing salons, creating a lovely lifestyle hub right on your doorstep.

Both Lidl and Tesco are also within close proximity, making everyday essentials and larger grocery shops easy to manage. Families are particularly drawn to the area for its well-regarded schooling options and catchment appeal, with several popular schools nearby.

Outdoor space is well catered for too, with a range of parks and green areas offering great spots for walks, play or weekend relaxation. Commuters will appreciate the quick access to the Northern Distributor Road (NDR), streamlining journeys around the city and beyond, while Norwich's central attractions remain just minutes away, whether by car or public transport.



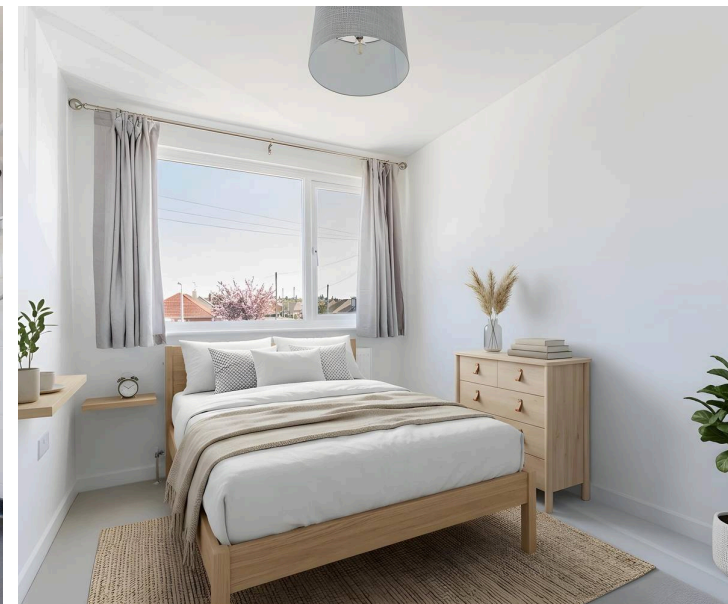
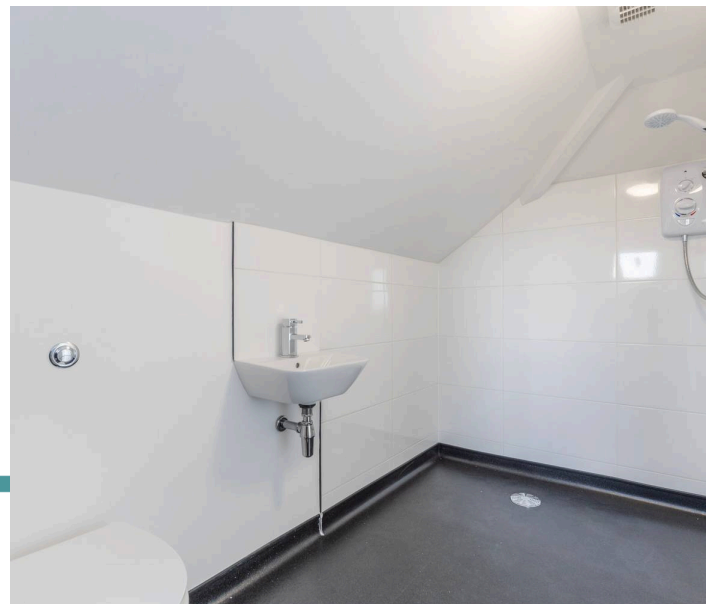
24 Varvel Avenue

Varvel Avenue, Sprowston

This beautifully refurbished three-bedroom semi-detached chalet bungalow has been thoughtfully extended and renovated throughout to create a stylish, modern home, offered to the market with no onward chain. Finished to a high standard from top to bottom, the property combines contemporary design with practical family living, making it ideal for a wide range of buyers.

At the centre of the home is an impressive open-plan kitchen and family room extending to over 11 metres, providing an exceptional sense of space and light. The kitchen is well appointed with quality fittings, generous work surfaces and a central island, while the family area easily accommodates dining and relaxing spaces. Patio doors open directly onto the rear garden, creating a seamless connection between indoor and outdoor living and making this an excellent space for entertaining or everyday family life.

The ground floor offers flexible accommodation, including a spacious double bedroom with its own modern en-suite bathroom, ideal for guests or multi-generational living. A separate utility room keeps laundry and household tasks discreetly tucked away, while a ground floor WC adds further convenience.



24 Varvel Avenue

Upstairs, there are two further well-proportioned bedrooms, both enjoying a bright and airy feel, along with a contemporary en-suite wet room finished in a clean, modern style. This layout provides comfort, privacy and practicality for family members or visiting guests.

Externally, the property is approached via a newly laid gravel driveway and sits behind mature shrubs, offering a pleasant degree of privacy. To the rear, the enclosed garden is mainly laid to lawn, making it ideal for children, pets or simply relaxing outdoors. A detached garage with power is accessed via a side door, providing excellent storage, workshop space or secure parking.

The renovation has also included significant behind-the-scenes improvements, delivering peace of mind for future owners. These include a brand-new gas central heating system, newly installed plumbing with copper pipework, and a full electrical rewire throughout, ensuring the home meets modern standards of efficiency, safety and reliability.

Overall, this is a turnkey property offering spacious, contemporary living, quality improvements throughout, and well-designed indoor and outdoor spaces, all ready to be enjoyed immediately.

Agents Note

This property will be sold freehold and connected to mains water, electricity, gas (2025) and drainage.

Some images used in this listing have been digitally staged to illustrate potential furnishing and layout options. We recommend arranging a viewing to assess the space and features in person.



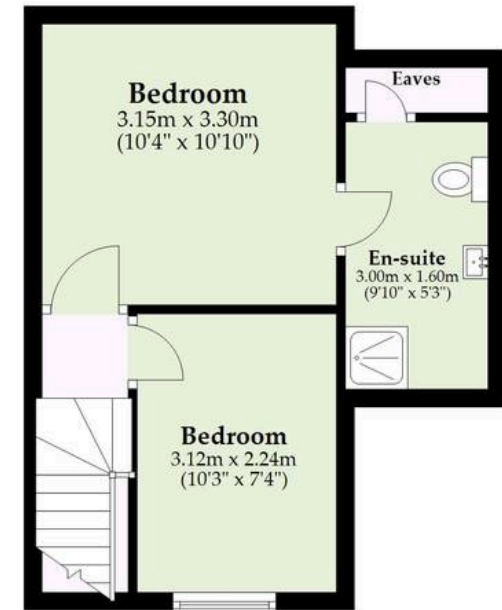
Ground Floor

Approx. 112.2 sq. metres (1208.2 sq. feet)



First Floor

Approx. 27.2 sq. metres (292.5 sq. feet)



Total area: approx. 139.4 sq. metres (1500.7 sq. feet)

Whilst every attempt has been made to ensure the accuracy of the floorplan contained here, measurements of doors, windows, rooms and any other items are approximate and no responsibility is taken for any error, omission or mis-statement. This plan is for illustrative purposes only and should be used as such by any prospective purchaser. The services, systems and appliances shown have not been tested and no guarantee as to their operability or efficiency can be given.

Plan produced using PlanUp.

Dreaming of this home? Let's make it a *reality*.



Meet *Abi*
Branch Partner



Meet *Karol*
Property Lister



Meet *Claire*
Aftersales Team Leader

Minors & Brady
Your home, our market



wroxham@minorsandbrady.co.uk



01603 783088



6 Church Road, Wroxham, Norwich, NR12 8UG

CAISTER-ON-SEA | DEREHAM | DISS | NORWICH | OULTON BROAD | WROXHAM



How can we support

- ✓ Residential Mortgages
- ✓ Protection & Insurance
- ✓ Buy-to-let (personal and limited company)



Matt Waters
Director and
Principal



Victoria Payne
Mortgage and
Protection Advisor

Offering you quick and professional mortgage advice every step of the way.

T: 01603 210378
E: enquiries@norfolk-mortgages.co.uk