



5 Haycroft, Hemsby  
Great Yarmouth



Minors & Brady

## 5 Haycroft

Hemsby, Great Yarmouth

In a quiet corner of Hemsby, this semi-detached home offers an easy, practical base for anyone looking to enjoy life by the coast. The layout is straightforward and comfortable, with bright living spaces, a modern kitchen and the valuable addition of an accessible ground-floor bedroom with its own wet room. Two further bedrooms upstairs and a low-maintenance garden make the property well suited to both everyday living and relaxed downtime, creating an appealing option for buyers seeking a well-kept home in this popular seaside village.

- Semi-detached residence positioned down a quiet, residential road in the popular coastal village of Hemsby
- Suitable option for first-time buyers, families or someone who requires a ground-floor accommodation
- Spacious living room that is filled with natural light, inviting relaxation and entertaining
- Kitchen fitted with modern units, an integrated oven, an induction hob and areas for your own appliances
- Garage conversion that is now a double bedroom, complemented by an easily accessible wet room
- Two first-floor bedrooms offering comfort and privacy
- Family bathroom comprising of a three-piece suite, including a bathtub, a hand wash basin and a toilet
- A private, low-maintenance garden that is predominantly Resin, along with planted beds and a timber storage shed
- A Resin driveway providing off-road parking for multiple vehicles, leading down to a carport for sheltered parking
- Easy access to village amenities, as well as the scenic coastline



M&B

## 5 Haycroft

Hemsby, Great Yarmouth

### Hemsby

Haycroft sits on the quieter inland edge of Hemsby, a coastal village north of Great Yarmouth, surrounded by open fields, sandy tracks and the low, windswept landscape that leads towards the dunes. Day-to-day needs are easy to cover: Co-op Food on Kings Way and Bermuda Stores on Newport Road are the closest options for quick shopping, while larger supermarkets such as Tesco Superstore in Caister-on-Sea, Sainsbury's in Great Yarmouth, and Asda on Acle New Road are all within a straightforward 15–20-minute drive.

Families have nearby education choices too, with Hemsby Primary School in the village itself and secondary options including Flegg High Ormiston Academy in Martham and Caister Academy a short distance south. Transport links are simple: local buses run towards Great Yarmouth for wider connections, and the A149 provides an easy route by car along the coast or inland. The lifestyle here is relaxed and outdoors-leaning, long beach walks, quiet evenings, and a sense of space, while still being close enough to larger towns for work, shopping, and leisure.



M&B

## 5 Haycroft

Hemsby, Great Yarmouth

Positioned along a quiet residential road in the well-loved coastal village of Hemsby, this semi-detached residence offers a calm and comfortable setting within easy reach of the beach, local amenities and the wider Norfolk coastline. Its thoughtful layout and adaptable spaces make it an appealing option for first-time buyers, families or anyone seeking the convenience of ground-floor accommodation.

A sheltered porch provides a welcoming introduction, leading into a bright and airy interior. The main living room is a generous, light-filled space that naturally encourages relaxation and everyday gathering. Its proportions and outlook create a central hub for the home, offering a setting that suits both quiet evenings and sociable occasions.

The kitchen features modern units and contemporary finishes, complete with an integrated oven, induction hob and space for your own appliances. It offers a practical and pleasant environment for cooking and dining, supporting the rhythm of daily life with ease.

A notable feature of the property is the former garage, now thoughtfully converted into a comfortable double bedroom with its own accessible wet room. This arrangement provides excellent versatility, ideal for multi-generational living, guest accommodation, independent space for an older child or anyone requiring step-free access. Its position on the ground floor adds a level of convenience that is increasingly valued.



M&B

# 5 Haycroft

Hemsby, Great Yarmouth

Upstairs, two further bedrooms offer peaceful, private spaces suited to restful nights or quiet daytime use. The family bathroom includes a three-piece suite with a bathtub, hand wash basin and toilet, presented in a simple and functional style.

The rear garden has been designed for low-maintenance enjoyment, finished predominantly in Resin for a clean and durable surface. Planted beds introduce softness and colour, while a timber storage shed provides useful outdoor storage. It is a space well suited to outdoor dining, children's play or simply enjoying the coastal air without the upkeep of a traditional lawn.

To the front, a Resin driveway offers generous off-road parking for several vehicles and leads to a carport, providing sheltered parking and additional practicality.

Altogether, this is a home that offers comfort, flexibility and a relaxed coastal lifestyle. Its adaptable layout, modern touches and peaceful setting create an inviting opportunity for buyers looking to settle in one of Norfolk's most cherished seaside villages.

## Agents Notes

Freehold

Connected to mains water, electricity and drainage.

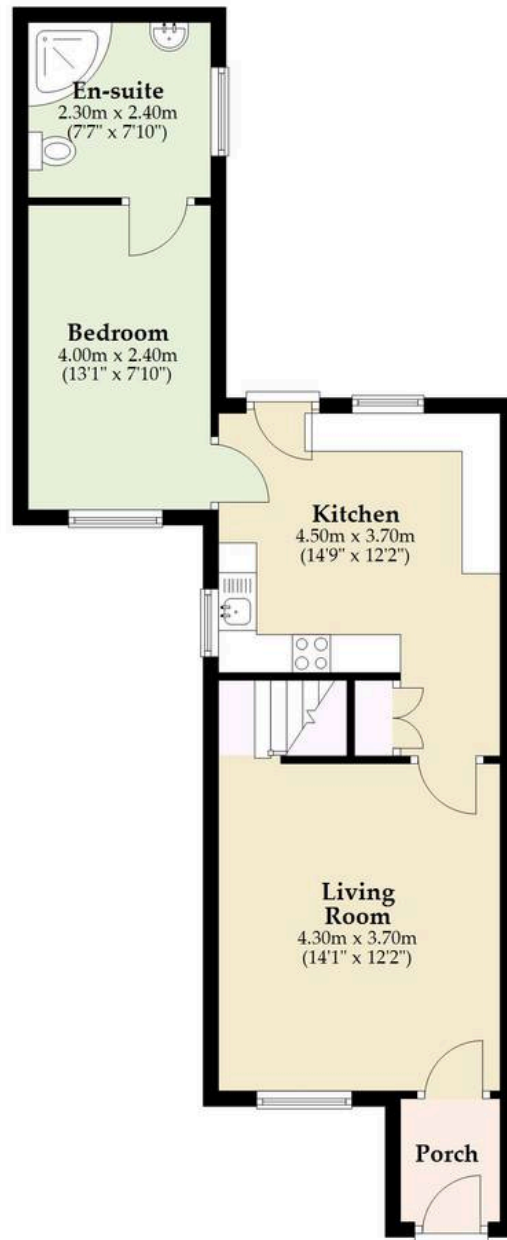
Oil central heating.



Energy Efficiency Rating		
	Current	Potential
<i>Very energy efficient - lower running costs</i>		
(92+) <b>A</b>		
(81-91) <b>B</b>		
(69-80) <b>C</b>		
(55-68) <b>D</b>	60	69
(39-54) <b>E</b>		
(21-38) <b>F</b>		
(1-20) <b>G</b>		
<i>Not energy efficient - higher running costs</i>		
<b>England, Scotland &amp; Wales</b>		
		EU Directive 2002/91/EC

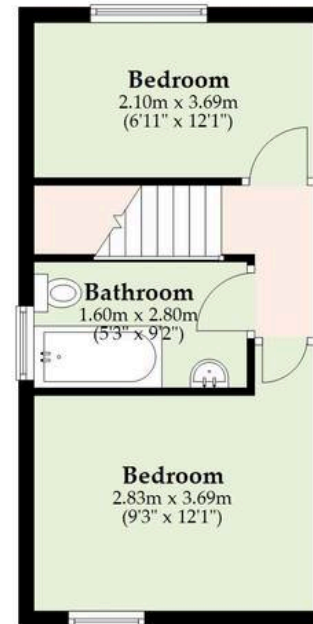
### Ground Floor

Approx. 50.7 sq. metres (545.4 sq. feet)



### First Floor

Approx. 29.5 sq. metres (317.2 sq. feet)



Total area: approx. 80.1 sq. metres (862.6 sq. feet)

Whilst every attempt has been made to ensure the accuracy of the floorplan contained here, measurements of doors, windows, rooms and any other items are approximate and no responsibility is taken for any error, omission or mis-statement. This plan is for illustrative purposes only and should be used as such by any prospective purchaser. The services, systems and appliances shown have not been tested and no guarantee as to their operability or efficiency can be given.

Plan produced using PlanUp.

# Dreaming of this home? Let's make it a *reality*.



Meet *Sarah*  
Senior Property Consultant



Meet *Dan*  
Branch Partner



Meet *Lauren*  
Property Consultant

Minors & Brady  
*Your home, our market*

 [caister@minorsandbrady.co.uk](mailto:caister@minorsandbrady.co.uk)

 01493 806188

 48 High Street, Caister-on-Sea, Great Yarmouth, NR30 5EH

CAISTER-ON-SEA | DEREHAM | DISS | NORWICH | OULTON BROAD | WROXHAM



## How can we support

- ✓ Residential Mortgages
- ✓ Protection & Insurance
- ✓ Buy-to-let (personal and limited company)



**Matt Waters**  
Director and  
Principal



**Victoria Payne**  
Mortgage and  
Protection Advisor

Offering you quick and professional mortgage advice every step of the way.

T: 01603 210378  
E: [enquiries@norfolk-mortgages.co.uk](mailto:enquiries@norfolk-mortgages.co.uk)