



80b Southtown Road, Great Yarmouth

Great Yarmouth



Minors & Brady

80b Southtown Road

Great Yarmouth

This three-bedroom detached home offers an easy, modern way of living, with thoughtful updates throughout and a layout that works well for everyday life. Set on a quiet private road, it features a newly fitted kitchen, new windows and a brand-new boiler, giving the property a fresh and reassuringly up-to-date feel. The main living space is bright and comfortable, with a separate utility room adding welcome practicality. Upstairs, the bedrooms are well-proportioned and supported by a family bathroom and additional cloakroom. Outside, the generous wraparound garden provides plenty of space to enjoy the outdoors, and off-road parking adds further convenience. A well-presented, move-in-ready home that suits a range of lifestyles.

- Modern three-bedroom detached home on a quiet private road
- Newly fitted kitchen with contemporary finishes
- Bright main living space with dual-aspect natural light
- Utility room providing additional household convenience
- Three well-proportioned bedrooms, each with built-in storage
- Updated windows throughout for improved comfort and efficiency
- Recently installed boiler offering reliable, energy-efficient heating
- Generous wraparound garden with excellent outdoor potential
- Family bathroom and separate ground-floor cloakroom
- Off-road parking for four vehicles





M&B

80b Southtown Road

Great Yarmouth

Great Yarmouth

Southtown Road sits on the south side of the River Yare, forming part of a long-established residential and commercial stretch that links Great Yarmouth with Gorleston. The setting has an urban, practical feel, with homes, small businesses, and light industry creating a lived-in, everyday atmosphere. Daily essentials are easy to reach: Asda in Gorleston and Morrisons at Gapton Hall are the closest large supermarkets, both a short drive away, while several convenience stores sit within the surrounding streets. Families benefit from nearby education options, with Southtown Primary School close by and Great Yarmouth Charter Academy within easy reach for older students.

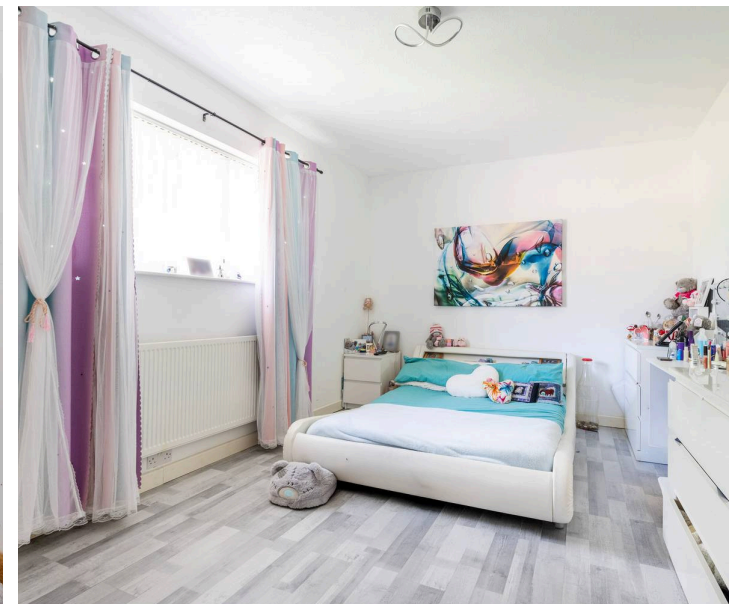
Transport links are straightforward, regular bus routes run along or near Southtown Road, connecting directly to the town centre, the seafront, and Gorleston, and the road provides quick access to the A47 for wider travel. The lifestyle here suits people who value convenience: riverside walks, the town centre, and the beach are all close enough to enjoy without hassle, while local pubs, takeaways, and independent shops add to the area's day-to-day practicality.

Agents Notes

Freehold

Connected to mains water, electricity, gas and drainage.

Gas central heating.



80b Southtown Road

Great Yarmouth

Set along a quiet private road, this well-presented three-bedroom detached home offers a modern and inviting setting with thoughtful upgrades throughout. Recently improved with new windows and a brand-new boiler, it provides a reassuringly up-to-date environment ready for immediate enjoyment.

The ground floor features a bright and comfortable living space with natural light from multiple aspects, creating an easy backdrop for everyday life. The newly fitted kitchen brings a contemporary feel, complete with quality finishes and direct access to the garden, while a separate utility room adds valuable practicality.

Upstairs, three appealing bedrooms offer flexibility for family living, guests, or home working. Built-in storage in each room enhances the sense of order and space, and the family bathroom, along with a separate cloakroom, ensures the home functions smoothly for busy households.

The generous wraparound garden is a standout feature, offering plenty of scope for outdoor dining, play, or simply enjoying time outside. Off-road parking for four vehicles further supports the home's convenience.

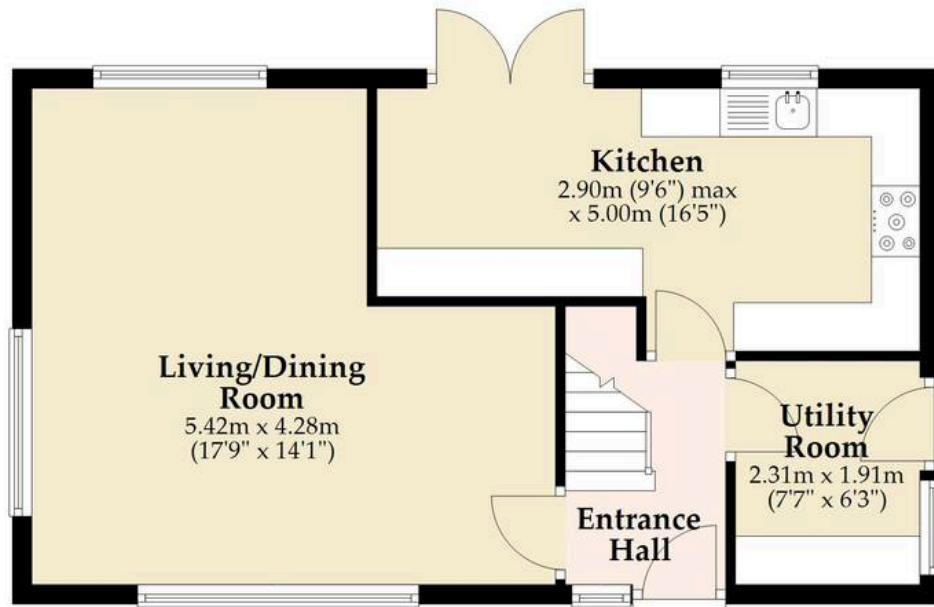
With its modern upgrades, fresh presentation and thoughtful layout, this property offers an appealing opportunity for anyone seeking a move-in-ready home within easy reach of local amenities, schools and transport links.

A well-balanced home with a welcoming feel, ready to suit a range of lifestyles.



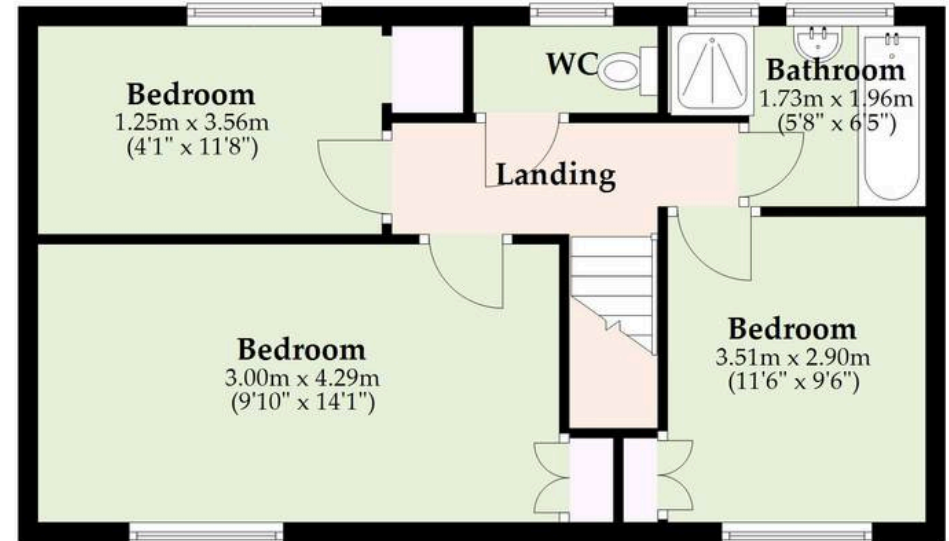
Ground Floor

Approx. 58.3 sq. metres (627.9 sq. feet)



First Floor

Approx. 43.0 sq. metres (463.0 sq. feet)



Total area: approx. 101.3 sq. metres (1090.9 sq. feet)

Whilst every attempt has been made to ensure the accuracy of the floorplan contained here, measurements of doors, windows, rooms and any other items are approximate and no responsibility is taken for any error, omission or mis-statement. This plan is for illustrative purposes only and should be used as such by any prospective purchaser. The services, systems and appliances shown have not been tested and no guarantee as to their operability or efficiency can be given.

Plan produced using PlanUp.

Dreaming of this home? Let's make it a *reality*.



Meet *Sarah*
Senior Property Consultant



Meet *Dan*
Branch Partner



Meet *Lauren*
Property Consultant

Minors & Brady
Your home, our market

 caister@minorsandbrady.co.uk

 01493 806188

 48 High Street, Caister-on-Sea, Great Yarmouth, NR30 5EH

CAISTER-ON-SEA | DEREHAM | DISS | NORWICH | OULTON BROAD | WROXHAM



How can we support

- ✓ Residential Mortgages
- ✓ Protection & Insurance
- ✓ Buy-to-let (personal and limited company)



Matt Waters
Director and
Principal



Victoria Payne
Mortgage and
Protection Advisor

Offering you quick and professional mortgage advice every step of the way.

T: 01603 210378
E: enquiries@norfolk-mortgages.co.uk