



7 Foxglade, Lowestoft

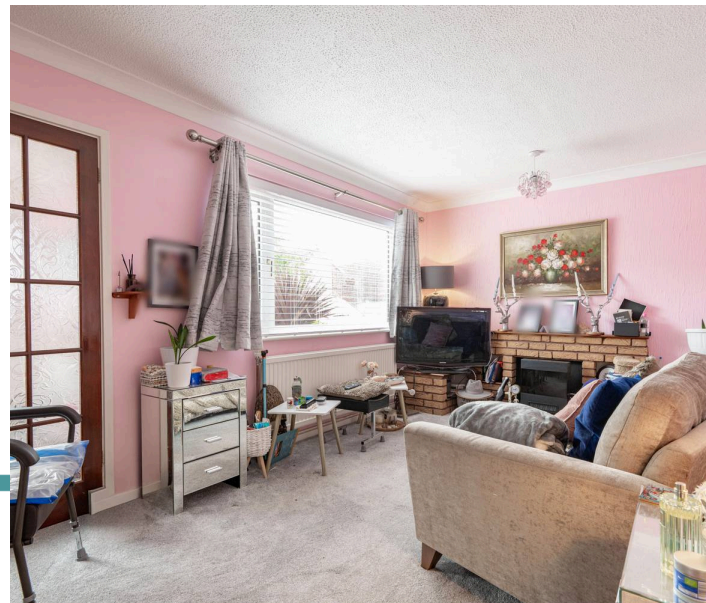
Minors & Brady

7 Foxglade

Lowestoft

Enjoying a pleasant position within the well-regarded North Oulton Broad area of Lowestoft, this extended semi-detached home offers an excellent opportunity for those seeking space, convenience and a family-friendly setting. Offering a great balance of space, practicality and modern touches, the property is perfectly suited to growing families and first-time buyers looking to settle in a well-established location.

- Extended three-bedroom semi-detached home
- Located in the sought-after North Oulton Broad area of Lowestoft
- Spacious and modern kitchen/diner with integrated appliances
- Ground floor shower room for added convenience
- Ample off-road parking with driveway, car port and detached garage
- Low-maintenance, fully enclosed rear garden with summerhouse
- Well placed for local amenities and within catchment for a popular junior school
- Close to the east coastline



M&B



M&B

7 Foxglade

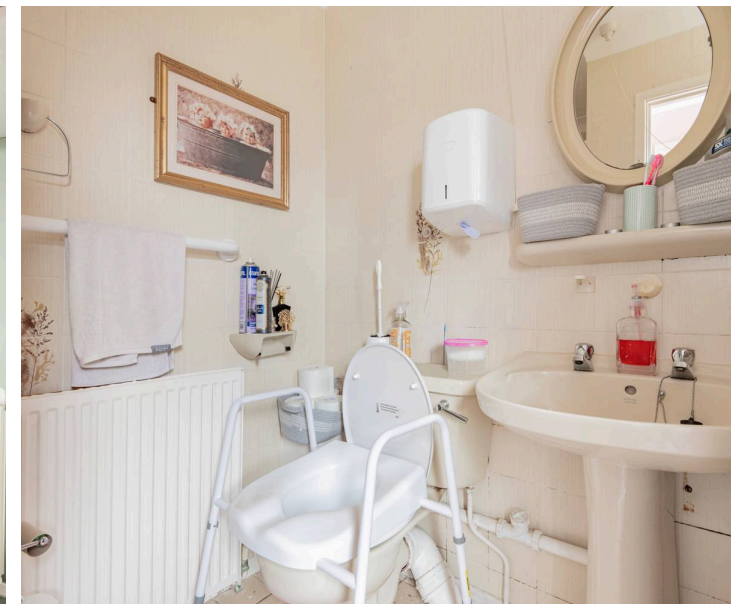
Lowestoft

Location

North Oulton Broad, part of Lowestoft, is a highly regarded residential area known for its accessibility and strong sense of community. The area offers a range of local shops, schools and everyday amenities, while also providing easy access to Oulton Broad itself, one of the gateways to the Norfolk Broads. With good transport links and nearby green spaces, it remains a popular choice for families and commuters alike seeking a balance between convenience and a more relaxed lifestyle.

Agents Note

We understand the property will be sold freehold, connected to all mains services. With gas central heating.



M&B

7 Foxglade

Lowestoft, Lowestoft

Set within the ever-popular North Oulton Broad area of Lowestoft, this extended semi-detached home occupies a convenient and family-friendly position, ideally placed for everyday amenities and schooling.

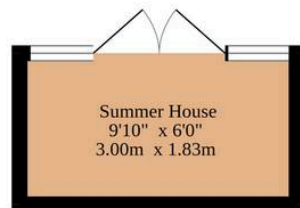
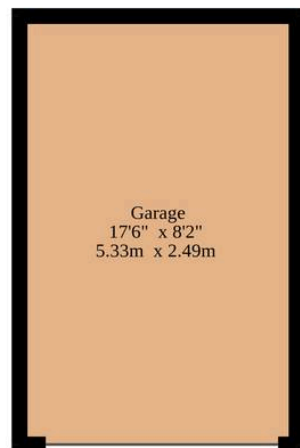
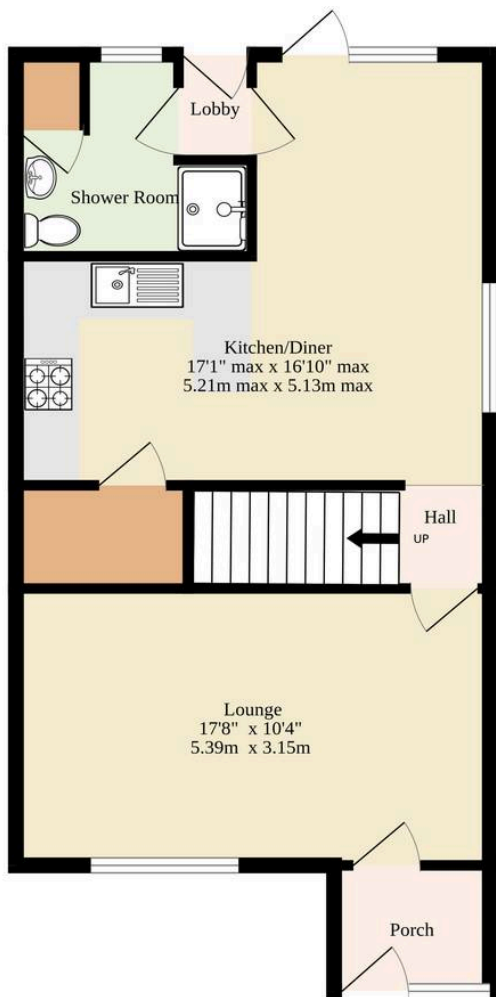
The accommodation is both well-proportioned and versatile, having been enhanced by a thoughtfully designed extension. At the heart of the home is a spacious, recently fitted kitchen/diner, finished with modern high-gloss units, ample worktop space and integrated appliances creating an ideal setting for both day-to-day living and entertaining. A separate lounge to the front provides a comfortable retreat, while a ground floor shower room adds valuable convenience.

Upstairs, the property continues to deliver with three bedrooms, including a principal bedroom with fitted wardrobes, alongside a family bathroom and separate WC offering a practical layout for busy households.

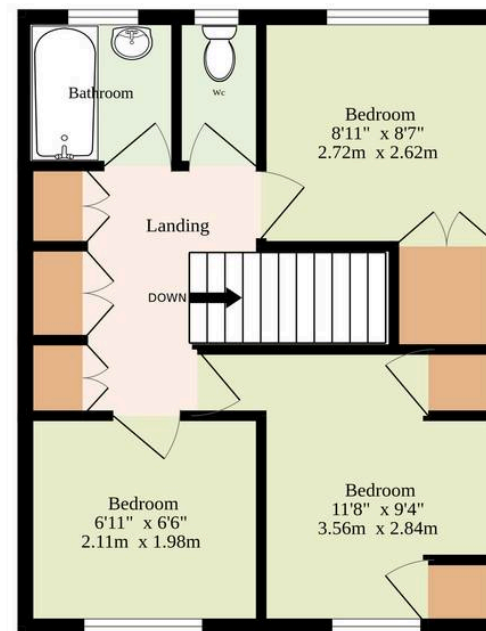
Externally, the home is equally well equipped. A wide frontage and long driveway provide ample off-road parking, leading through to a car port and detached garage with power and lighting. To the rear, a fully enclosed, low-maintenance garden has been designed for ease, featuring paved seating areas and a summerhouse ideal for relaxing or entertaining.



Ground Floor
727 sq.ft. (67.5 sq.m.) approx.



1st Floor
362 sq.ft. (33.6 sq.m.) approx.



Sqft Includes Summer House And Garage

TOTAL FLOOR AREA : 1089 sq.ft. (101.2 sq.m.) approx.

Whilst every attempt has been made to ensure the accuracy of the floorplan contained here, measurements of doors, windows, rooms and any other items are approximate and no responsibility is taken for any error, omission or mis-statement. This plan is for illustrative purposes only and should be used as such by any prospective purchaser. The services, systems and appliances shown have not been tested and no guarantee as to their operability or efficiency can be given.

Made with Metropix ©2026

Dreaming of this home? Let's make it a *reality*.



Meet *Macey*
Branch Manager



Meet *Bradley*
Senior Property Lister



Meet *Ollee*
Senior Property Consultant

Minors & Brady
Your home, our market

 oultonbroad@minorsandbrady.co.uk

 01502 447788

 Ivy Lane, Oulton Broad, NR33 8QH

CAISTER-ON-SEA | DEREHAM | DISS | LETTINGS | NORWICH | OULTON BROAD | WROXHAM



How can we support

- ✓ Residential Mortgages
- ✓ Protection & Insurance
- ✓ Buy-to-let (personal and limited company)



Matt Waters
Director and
Principal



Victoria Payne
Mortgage and
Protection Advisor

Offering you quick and professional mortgage advice every step of the way.

T: 01603 210378
E: enquiries@norfolk-mortgages.co.uk