



20 Webster Street, Bungay

Bungay



Minors & Brady

20 Webster Street

Bungay

Just a short stroll from the town centre, yet quietly set along a residential street, this mid-terrace home offers a lifestyle of convenience and comfort. Ideal for first-time buyers, small families, or investors, it features a light-filled open-plan living and dining area with a traditional fireplace, a kitchen with direct access to the garden, and three bedrooms ready to be personalised. Outside, a decked terrace, lawn, and timber shed provide a perfect setting for relaxing, entertaining, and everyday enjoyment. A well-positioned property with charm and potential, ready to welcome its next owners.

- Opportunity to be offered chain free
- Mid-terrace residence positioned down a quiet residential road, moments away from the town centre
- Suitable open for first-time buyers, small families or investors looking for a property within a prime location
- Open-plan living/dining room accentuated by a traditional fireplace, inviting relaxation and entertaining
- Kitchen fitted with units, a sink/drain unit, areas for your own appliances and access out to the garden
- Ground-floor bathroom comprising of a classic three-piece suite
- Three bedrooms offering comfort and privacy, ready for personalisation
- Lovely-sized garden featuring a decked terrace for seating, a laid to lawn and a timber shed
- Easy access to a wide range of amenities within the town





M&B

20 Webster Street

Bungay

Bungay

Webster Street is a quiet, residential road located just a short walk from the centre of Bungay, a historic market town in Suffolk. The street features a mix of period houses, many dating from the 19th and early 20th centuries, giving it a sense of established character while remaining practical for modern living. Its position close to the town centre means that shops, cafés, and essential services are all within easy walking distance. Local amenities include independent food shops, a small grocery store, a chemist, and traditional pubs, alongside more specialized boutiques and craft shops in the nearby Market Place.

For families, schooling is straightforward. Bungay Primary School and St Edmund's Catholic Primary School are within easy reach, while older children typically attend Bungay High School, all of which can be reached on foot or with a short drive.

Transport is typical of a small East Anglian town: there is no local train station, but bus services connect Bungay with nearby towns such as Beccles, Harleston, and Great Yarmouth. Roads are convenient for drivers, with the A143 and A144 providing links toward Norwich, Lowestoft, and other regional centres.

Agents Notes

Freehold. Connected to mains water, electricity, gas and drainage. Gas central heating system. On street parking, no permit (Minors & Brady are unable to verify this information. Has shared access across neighbours garden.



20 Webster Street

Bungay

Positioned along a quiet residential road, just moments from the town centre, this mid-terrace residence presents a fantastic opportunity for first-time buyers, small families, or investors seeking a property in a prime location.

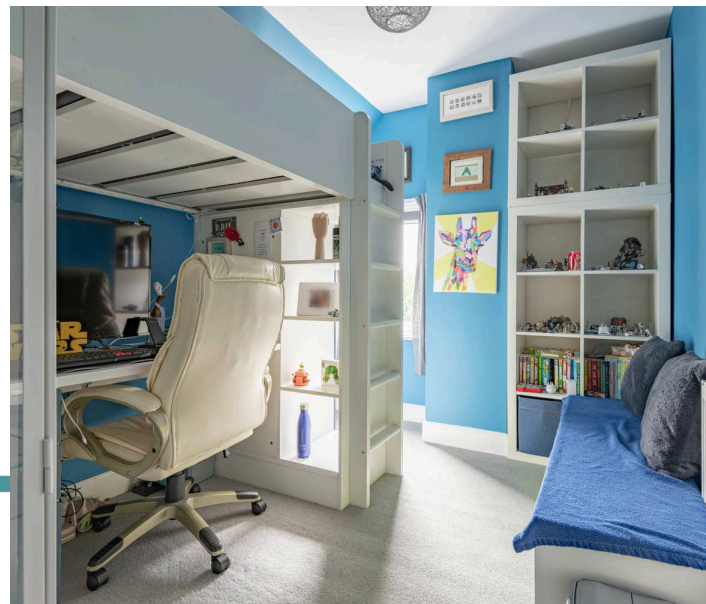
Inside, the open-plan living and dining room is enhanced by a traditional fireplace, creating a welcoming environment for both relaxation and entertaining. Natural light fills the space, highlighting the room's versatile layout.

The kitchen is fitted with units, a sink and drainer, and areas for your own appliances, with convenient access directly to the garden, making indoor-outdoor living effortless. On the ground floor, a classic three-piece bathroom offers practical comfort.

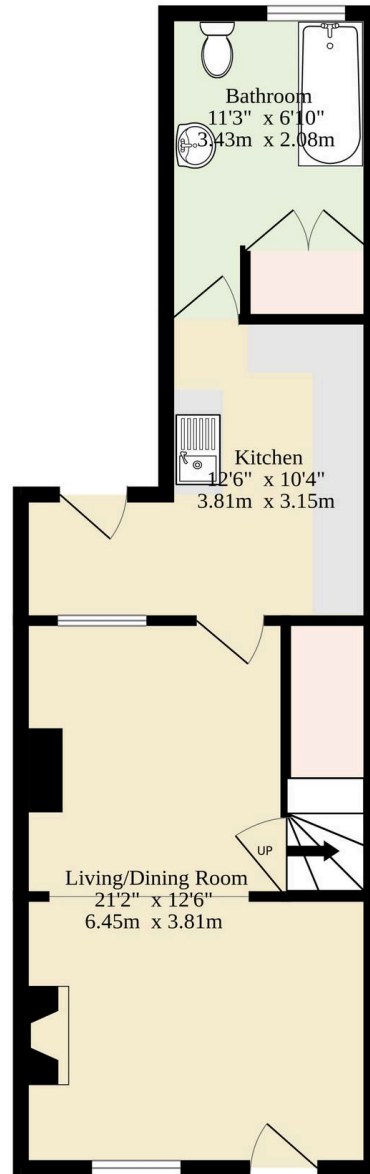
Upstairs, three bedrooms provide privacy and comfort, each ready to be personalised to suit your own style.

Outside, the garden offers a decked terrace for seating, a lawn area, and a timber shed, providing both practical storage and a pleasant space for enjoying the outdoors.

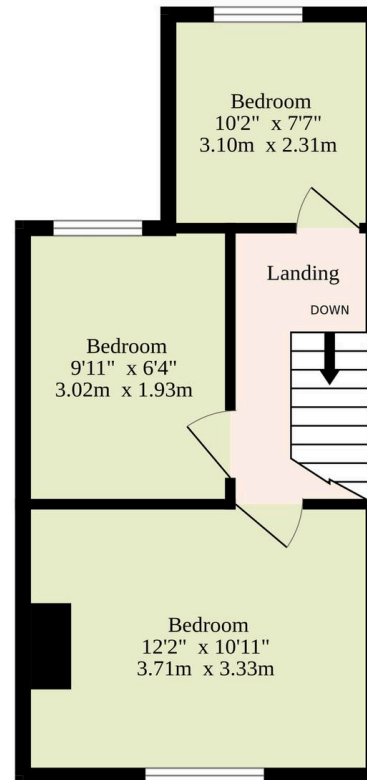
A property that delivers a well-considered layout in a sought-after location, ready for its new owners to make their mark.



Ground Floor
467 sq.ft. (43.4 sq.m.) approx.



1st Floor
288 sq.ft. (26.8 sq.m.) approx.



TOTAL FLOOR AREA : 755 sq.ft. (70.1 sq.m.) approx.

Whilst every attempt has been made to ensure the accuracy of the floorplan contained here, measurements of doors, windows, rooms and any other items are approximate and no responsibility is taken for any error, omission or mis-statement. This plan is for illustrative purposes only and should be used as such by any prospective purchaser. The services, systems and appliances shown have not been tested and no guarantee as to their operability or efficiency can be given.
Made with MetroPix ©2026

Dreaming of this home? Let's make it a *reality*.



Meet *Macey*
Branch Manager



Meet *Bradley*
Senior Property Lister



Meet *Ollee*
Senior Property Consultant

Minors & Brady
Your home, our market

 oultonbroad@minorsandbrady.co.uk

 01502 447788

 Ivy Lane, Oulton Broad, NR33 8QH

CAISTER-ON-SEA | DEREHAM | DISS | LETTINGS | NORWICH | OULTON BROAD | WROXHAM



How can we support

- ✓ Residential Mortgages
- ✓ Protection & Insurance
- ✓ Buy-to-let (personal and limited company)



Matt Waters
Director and
Principal



Victoria Payne
Mortgage and
Protection Advisor

Offering you quick and professional mortgage advice every step of the way.

T: 01603 210378
E: enquiries@norfolk-mortgages.co.uk