



10 Church Close, Buxton

Norwich



Minors & Brady

10 Church Close

Buxton, Norwich

This appealing detached bungalow in a popular Buxton residential area offers a well-balanced layout suited to a range of buyers. Designed for ease and comfort, the home provides single-storey living with thoughtfully arranged interior spaces. The property is ready for immediate occupation, allowing buyers to move in without delay, whilst still offering the opportunity to personalise to individual tastes. Its versatile accommodation allows for both relaxation and practical day-to-day living. Outside, manageable grounds and ample parking add to its overall convenience. The inclusion of a garage further enhances its functionality. Altogether, it presents a solid and inviting home in a well-regarded setting.

- Detached bungalow in a popular Buxton residential area
- Well-balanced and thoughtfully arranged layout
- Single-storey living for ease and accessibility
- Ready for immediate occupation
- Opportunity to personalise to individual taste
- Versatile accommodation for a range of buyers
- Comfortable living spaces suited to everyday life
- Manageable outdoor grounds
- Ample off-road parking
- Garage providing additional storage





M&B

10 Church Close

Buxton, Norwich

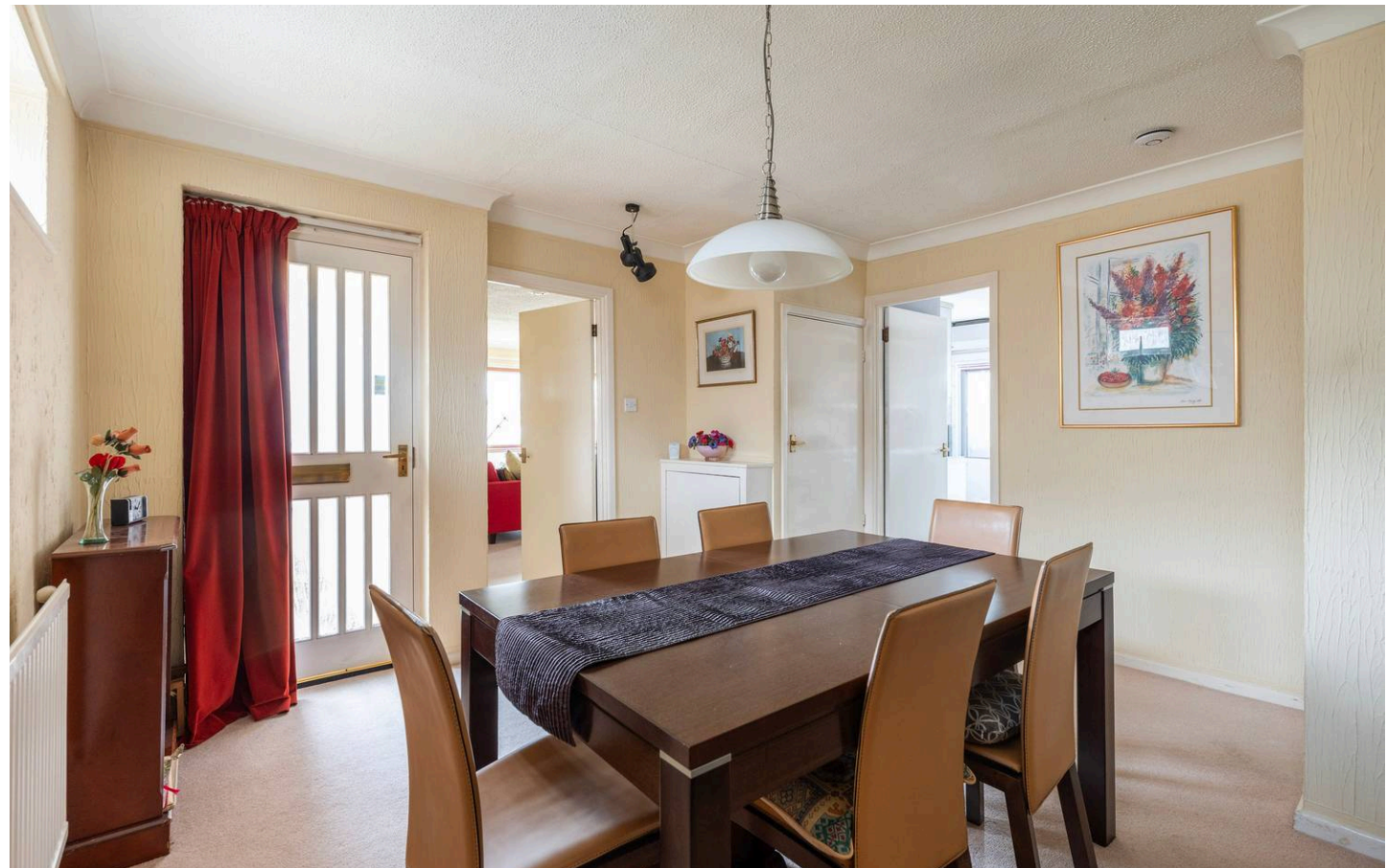
The Location

Set in the picturesque Norfolk countryside, the village of Buxton offers a peaceful and community-focused lifestyle, while remaining conveniently connected to surrounding towns and transport links. Located just north of Norwich, the village is set along the banks of the River Bure, offering scenic views, countryside walks, and access to the Bure Valley Railway, a charming narrow-gauge steam railway that links Buxton with Aylsham and Wroxham.

Buxton itself enjoys a welcoming, village feel with essential amenities such as a local primary school, pub, village hall, shop, and post office, while the neighbouring riverside village of Coltishall provides further conveniences including shops, cafés, and well-regarded eateries.

For more comprehensive services, the historic market town of Aylsham is just a short drive away, offering a variety of supermarkets, independent retailers, medical facilities, and both primary and secondary schooling options.

The area is popular with those seeking a slower pace of life while still being within easy reach of Norwich city centre, which lies around 25 minutes away by car and provides a mainline rail link to London Liverpool Street. With its combination of rural charm, riverside walks, and access to the beauty of the Norfolk Broads, Buxton is an ideal setting for families, professionals, or those looking to retire to the countryside without sacrificing everyday convenience.



10 Church Close

Buxton, Norwich

Church Close, Buxton

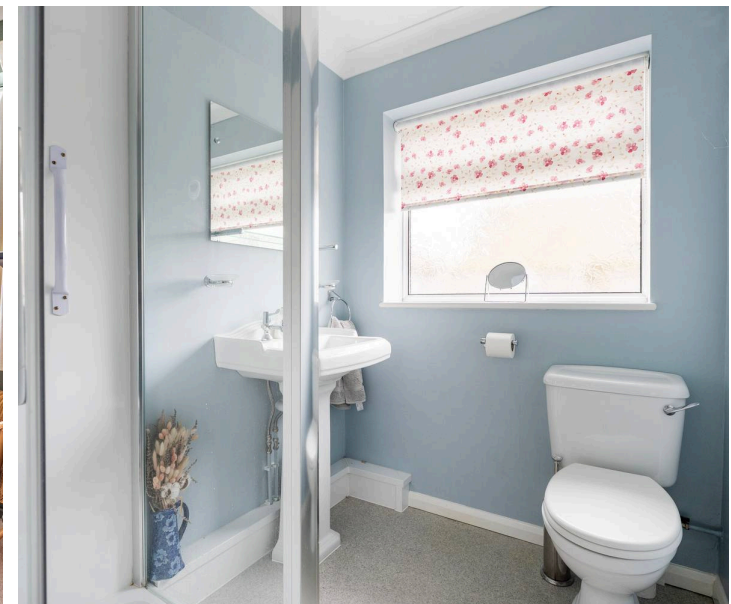
Situated on Church Close in Buxton, this well-presented two-bedroom detached bungalow offers comfortable, single-level living in a convenient and well-regarded residential setting.

Offered with no onward chain, the property presents an excellent opportunity for buyers seeking a smooth and straightforward move.

The accommodation is both practical and generously proportioned. A key feature of the home is the extended lounge, which provides a spacious and welcoming sitting area with ample room for a range of furnishings. In addition, there is a separate dining room, offering a defined space for meals or the flexibility to be used as a home office or additional reception room if required.

The kitchen is well laid out, providing good levels of storage and worktop space, and is conveniently positioned to serve the dining room. The property boasts two double bedrooms, both of which are comfortable in size and benefit from natural light, making them suitable for a variety of uses.

A fitted shower room completes the internal accommodation, offering a practical and accessible space. The bungalow is considered move-in ready, having been maintained to a good standard throughout.



10 Church Close

Buxton, Norwich

Externally, the property enjoys a low-maintenance garden, ideal for those looking to enjoy outdoor space without extensive upkeep. A tandem driveway provides off-road parking for multiple vehicles and leads to a garage, further enhancing the practicality of the home.

Additional benefits include a boiler and water cylinder that have both been replaced within the last decade, contributing to the overall efficiency of the property.

This attractive detached bungalow combines space, convenience, and ease of living in a desirable Buxton location, and early viewing is recommended to fully appreciate what is on offer.

Agents Note

This property will be sold freehold.

This property is connected to mains water, electricity, gas and drainage.



Ground Floor

Approx. 98.7 sq. metres (1062.7 sq. feet)



Total area: approx. 98.7 sq. metres (1062.7 sq. feet)

Whilst every attempt has been made to ensure the accuracy of the floorplan contained here, measurements of doors, windows, rooms and any other items are approximate and no responsibility is taken for any error, omission or mis-statement. This plan is for illustrative purposes only and should be used as such by any prospective purchaser. The services, systems and appliances shown have not been tested and no guarantee as to their operability or efficiency can be given.

Plan produced using PlanUp.

Dreaming of this home? Let's make it a *reality*.



Meet *Abi*
Branch Partner



Meet *Karol*
Property Lister



Meet *Claire*
Aftersales Team Leader

Minors & Brady
Your home, our market



wroxham@minorsandbrady.co.uk



01603 783088



6 Church Road, Wroxham, Norwich, NR12 8UG

CAISTER-ON-SEA | DEREHAM | DISS | NORWICH | OULTON BROAD | WROXHAM



How can we support

- ✓ Residential Mortgages
- ✓ Protection & Insurance
- ✓ Buy-to-let (personal and limited company)



Matt Waters
Director and
Principal



Victoria Payne
Mortgage and
Protection Advisor

Offering you quick and professional mortgage advice every step of the way.

T: 01603 210378
E: enquiries@norfolk-mortgages.co.uk