



8 Burghwood Road, Ormesby

Great Yarmouth



Minors & Brady

8 Burghwood Road

Ormesby, Great Yarmouth

Set on a substantial corner plot, this semi-detached chalet bungalow in Ormesby provides living and dining areas that are bright and adaptable, creating a natural flow between entertaining and everyday life. The kitchen features practical fittings and characterful details that make it easy to use and personalise. Upstairs, two further rooms offer flexible options for a home office, guest accommodation, or hobbies, allowing the home to evolve with your needs. With off-road parking, a large garage, and a location that combines the convenience of village amenities with proximity to the Norfolk coast, the property delivers versatile accommodation alongside expansive outdoor space, with the garden remaining a defining feature of life here.

Agents Notes

Freehold

Connected to mains water and electricity.

Oil central heating system.



M&B

8 Burghwood Road

Ormesby, Great Yarmouth

- Semi-detached chalet bungalow proudly positioned on a substantial corner plot within the coastal village of Ormesby, Norfolk
- 1,033sqft of well-presented accommodation that can easily adapt to your lifestyle preferences and interior style
- Spacious living room with an electric feature fireplace and sliding doors out to the garden
- Kitchen fitted with cabinetry, a sink/drain unit, an oven, a ceramic hob and areas for your own appliances
- Dining room with double aspect views of the garden, suitable for hosting
- Two ground-floor double bedrooms and a shower room comprising of a classic three-piece suite
- Two first-floor bedrooms with the flexibility to have a home office, a guest room or a space for hobbies
- Expansive, wrap-around grounds that are beautifully maintained, featuring a sweeping lawn, established hedging, various seating areas and multiple sheds
- A paved driveway providing off-road parking and a large garage for storage/worktop use
- A quiet village setting that ensures easy access to nearby amenities, the scenic coastline and nearby villages and towns



8 Burghwood Road

Ormesby, Great Yarmouth

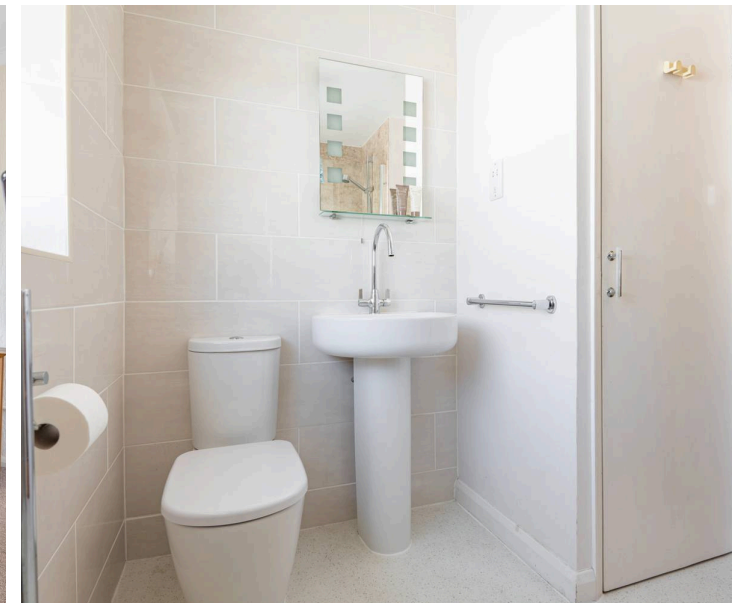
Ormesby

Burghwood Road lies in the quiet, rural coastal parish of Ormesby in Norfolk, surrounded by open fields, farmland, and pockets of woodland. The Norfolk coastline is just a few miles to the east, with sandy beaches and walking paths at Hemsby and California within a 10-minute drive, making it easy to enjoy the coast without living directly on it.

Village amenities are convenient, including a local post office, a pub, and small independent shops nearby in Ormesby St Margaret. For larger supermarkets and more extensive shopping, residents typically travel 10–15 minutes to Caister-on-Sea or Great Yarmouth, where Tesco, Morrisons, and Asda are available.

Families have access to local schooling with Ormesby Village Infant School and Ormesby Village Junior School serving younger children, while secondary education is found in nearby towns such as Caister Academy in Caister-on-Sea or other schools in Great Yarmouth.

Transport is primarily by car, with the B1152 and A149 providing direct links to Great Yarmouth and inland toward Norwich. Limited bus services connect the village to surrounding areas, but most residents rely on private vehicles for daily travel.



8 Burghwood Road

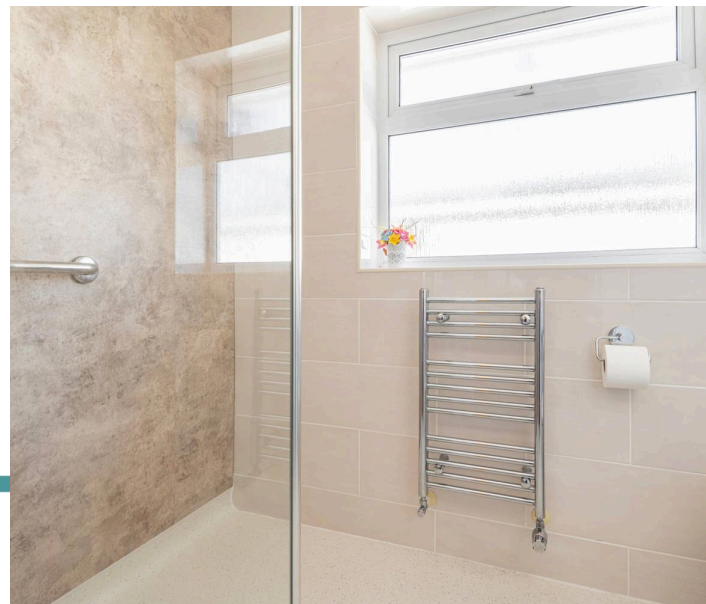
Ormesby, Great Yarmouth

Situated on a substantial corner plot within the coastal village of Ormesby, this semi-detached chalet bungalow offers flexible, well-presented accommodation that adapts to a variety of lifestyles. The property is defined by its bright interiors, versatile layout, and an outdoor space that is undoubtedly its standout feature.

A practical porch provides room for coats and shoes, leading into a welcoming entrance hall. The living room is both spacious and inviting, with an electric fireplace serving as a subtle focal point and sliding doors that open directly onto the garden, allowing light and fresh air to fill the space.

The kitchen is fitted with a range of cabinetry, a sink and drainer, an oven, and a ceramic hob, with space for additional appliances. Unique details, such as a circular window and serving hatch, add character and charm. Adjacent, the dining room enjoys double-aspect views over the garden, creating a bright and pleasant environment for family meals or entertaining.

The ground floor also includes two double bedrooms and a shower room with a classic three-piece suite. Upstairs, two further bedrooms provide flexible accommodation, ideal for a home office, guest room, or creative space.



M&B

8 Burghwood Road

Ormesby, Great Yarmouth

The gardens are a true highlight of the home, wrapping around the property to create an expansive, private outdoor environment. The grounds feature a sweeping lawn bordered by established hedging, offering both a sense of structure and space. Multiple seating areas provide options for dining, relaxing, or entertaining, while garden sheds offer practical storage without interrupting the sense of openness. Whether enjoying a quiet morning coffee in the sun, hosting friends and family, or pursuing outdoor hobbies, the garden provides a versatile and beautiful backdrop for daily life.

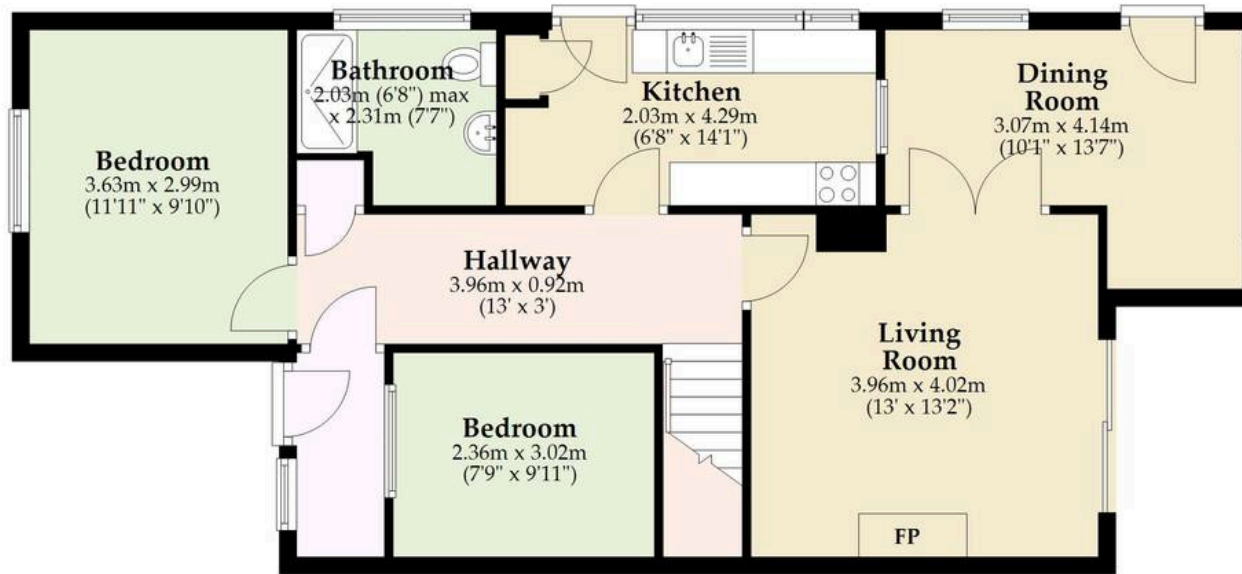
Practicality is not overlooked, with a paved driveway providing off-road parking for multiple vehicles and a large garage suitable for storage or workshop use.

This home presents a rare opportunity to secure a property with adaptable accommodation, generous outdoor space, and a garden that truly becomes an extension of the living area, enhancing both comfort and enjoyment.



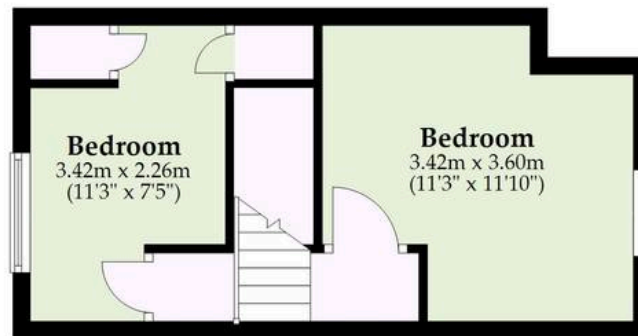
Ground Floor

Approx. 72.8 sq. metres (783.7 sq. feet)



First Floor

Approx. 23.2 sq. metres (249.6 sq. feet)



Total area: approx. 96.0 sq. metres (1033.3 sq. feet)

Whilst every attempt has been made to ensure the accuracy of the floorplan contained here, measurements of doors, windows, rooms and any other items are approximate and no responsibility is taken for any error, omission or mis-statement. This plan is for illustrative purposes only and should be used as such by any prospective purchaser. The services, systems and appliances shown have not been tested and no guarantee as to their operability or efficiency can be given.

Plan produced using PlanUp.

Dreaming of this home? Let's make it a *reality*.



Meet *Sarah*
Senior Property Consultant



Meet *Dan*
Branch Partner



Meet *Lauren*
Property Consultant

Minors & Brady
Your home, our market

 caister@minorsandbrady.co.uk

 01493 806188

 48 High Street, Caister-on-Sea, Great Yarmouth, NR30 5EH

CAISTER-ON-SEA | DEREHAM | DISS | NORWICH | OULTON BROAD | WROXHAM



How can we support

- ✓ Residential Mortgages
- ✓ Protection & Insurance
- ✓ Buy-to-let (personal and limited company)



Matt Waters
Director and
Principal



Victoria Payne
Mortgage and
Protection Advisor

Offering you quick and professional mortgage advice every step of the way.

T: 01603 210378
E: enquiries@norfolk-mortgages.co.uk