



1 Charles Close, Cromer
Cromer



Minors & Brady

1 Charles Close

Coastal convenience meets effortless living in this well-positioned Cromer home. This attractive two-bedroom semi-detached property is set within a popular residential area, just moments from the town centre and its range of shops, cafés, and amenities. Inside, the layout flows neatly from a comfortable lounge through to a kitchen/diner, with a bright conservatory offering additional living space overlooking the garden. Upstairs are two double bedrooms, both well suited for comfortable everyday living, along with a family bathroom. Outside, the landscaped rear garden has been designed for low maintenance while still providing a peaceful and characterful space, complete with a distinctive beach hut. With the benefit of a garage, gas central heating, and easy access to countryside and coastal walks, this home offers a superb lifestyle opportunity in a sought-after location.

- Popular and sought-after location in Cromer
- Two well-proportioned double bedrooms
- Semi-detached home offering comfortable living space
- Spacious kitchen/diner ideal for everyday living and entertaining
- Bright conservatory overlooking the rear garden
- Landscaped, low-maintenance enclosed rear garden
- Feature beach hut with power, plus additional garden outbuildings
- Garage providing parking or useful storage
- Gas central heating and double glazing throughout
- Close to town centre amenities, countryside, and coastal walks





M&B

1 Charles Close

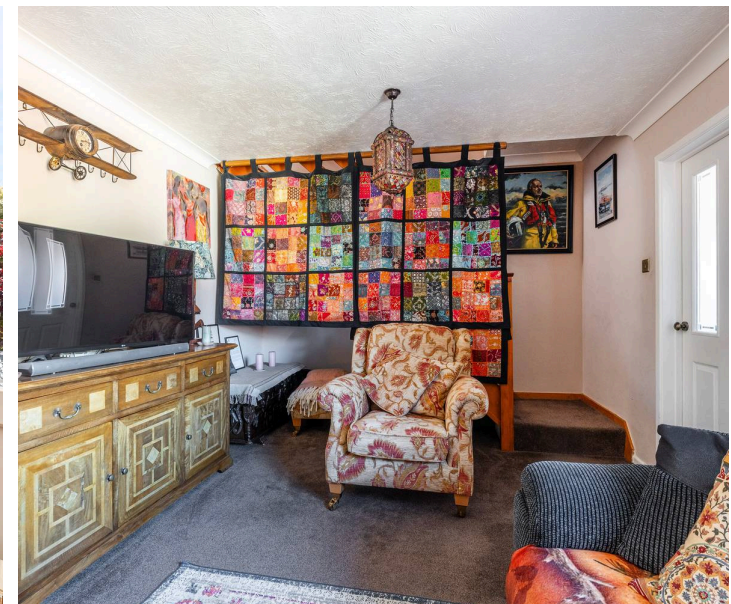
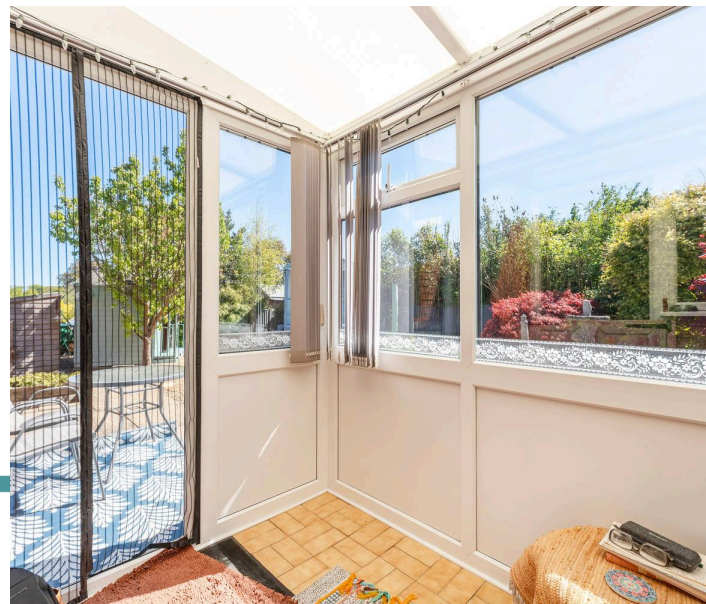
The Location

Cromer is a charming seaside town on the north coast of Norfolk. Set on cliffs overlooking the North Sea, it has a relaxed, welcoming feel and a strong connection to the sea.

One of its best-known landmarks is Cromer Pier, which stretches out into the water and still hosts traditional end-of-pier theatre shows, a rare and much-loved feature of British seaside towns. The beach below is sandy and spacious, especially at low tide, making it ideal for walks, paddling, or simply enjoying the fresh sea air.

Cromer has long been associated with fishing, particularly its famous Cromer crabs, which are still landed locally. The town centre features Victorian architecture, small independent shops, and a good selection of cafés and seafood restaurants, giving it an authentic rather than overly commercial atmosphere.

It also sits within the Norfolk Coast Area of Outstanding Natural Beauty, so visitors are close to scenic coastal paths, open skies, and peaceful countryside. Altogether, Cromer offers a pleasant and unpretentious coastal escape with plenty of traditional character.



1 Charles Close

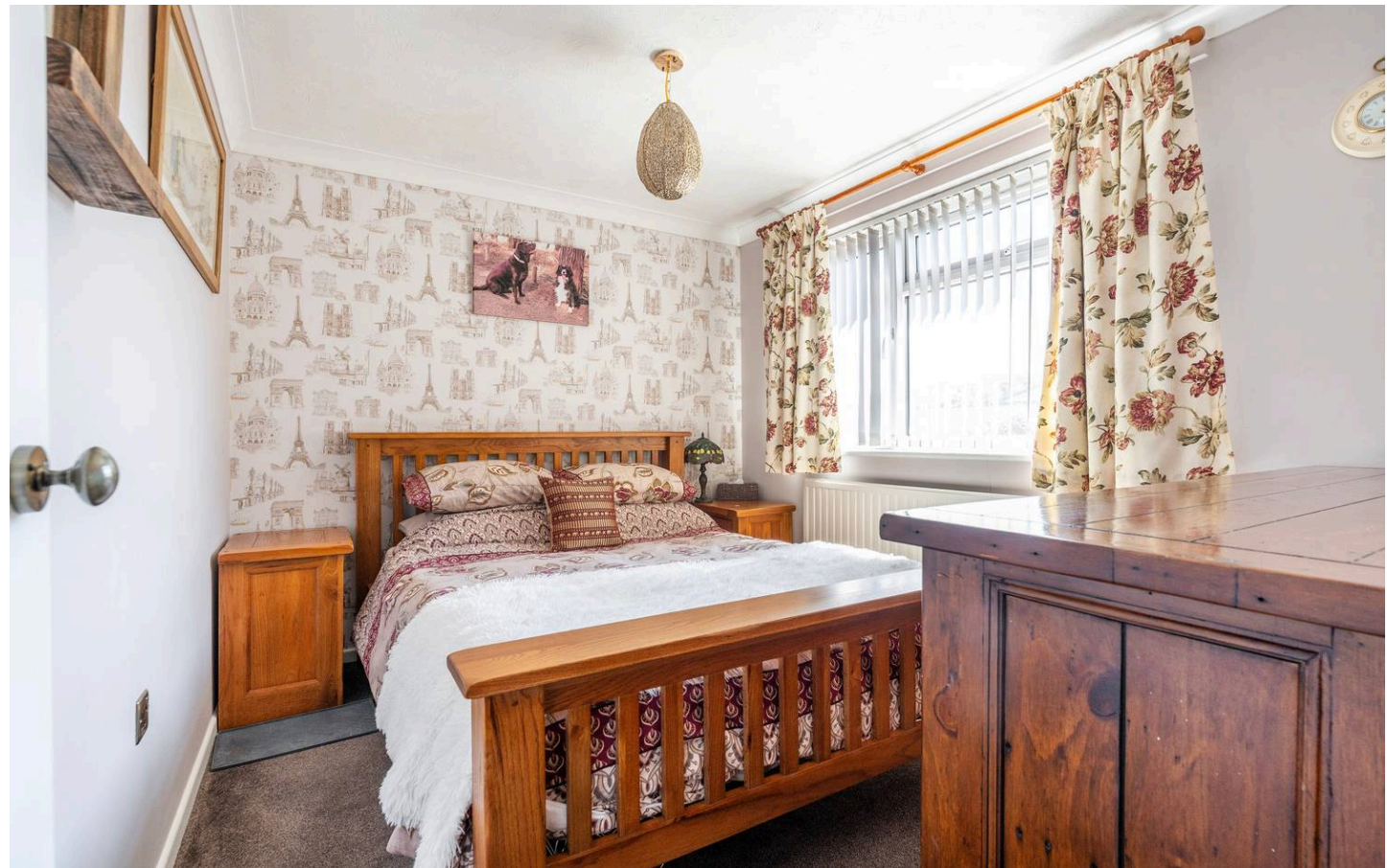
Cromer, Cromer

Charles Close, Cromer

Situated in a highly regarded area of Cromer, this attractive two-bedroom semi-detached home offers an excellent opportunity for those seeking a well-placed property close to both the town and the coast. The location is particularly convenient, being within easy reach of Cromer's town centre amenities while also offering quick access to scenic countryside and coastal walks.

The ground floor provides a comfortable and welcoming layout, beginning with a bright lounge that leads through to a generous kitchen/diner. This space works well for both everyday living and entertaining, with ample room for dining furniture. The conservatory extends the living accommodation further and enjoys views over the rear garden, making it a pleasant spot to relax throughout the year.

Upstairs, the property offers two well-proportioned double bedrooms. The main bedroom benefits from built-in storage, including cupboards and wardrobe space, while the second bedroom overlooks the rear garden. The family bathroom completes the first floor and is fitted with a modern three-piece suite.



M&B

1 Charles Close

The rear garden is a particular highlight, having been thoughtfully landscaped for ease of maintenance while still offering visual appeal. A mix of patio, shingle areas, and planted borders creates an inviting outdoor space, ideal for relaxing or entertaining. The feature beach hut adds a unique touch and benefits from power, alongside additional garden outbuildings that provide useful storage or versatile extra space. Side access leads conveniently back to the front of the property.

Further features include gas central heating, double glazing throughout, and a garage which offers parking or additional storage. With its appealing location and well-balanced accommodation, this home is well worth viewing to fully appreciate what it has to offer.

Agents Note

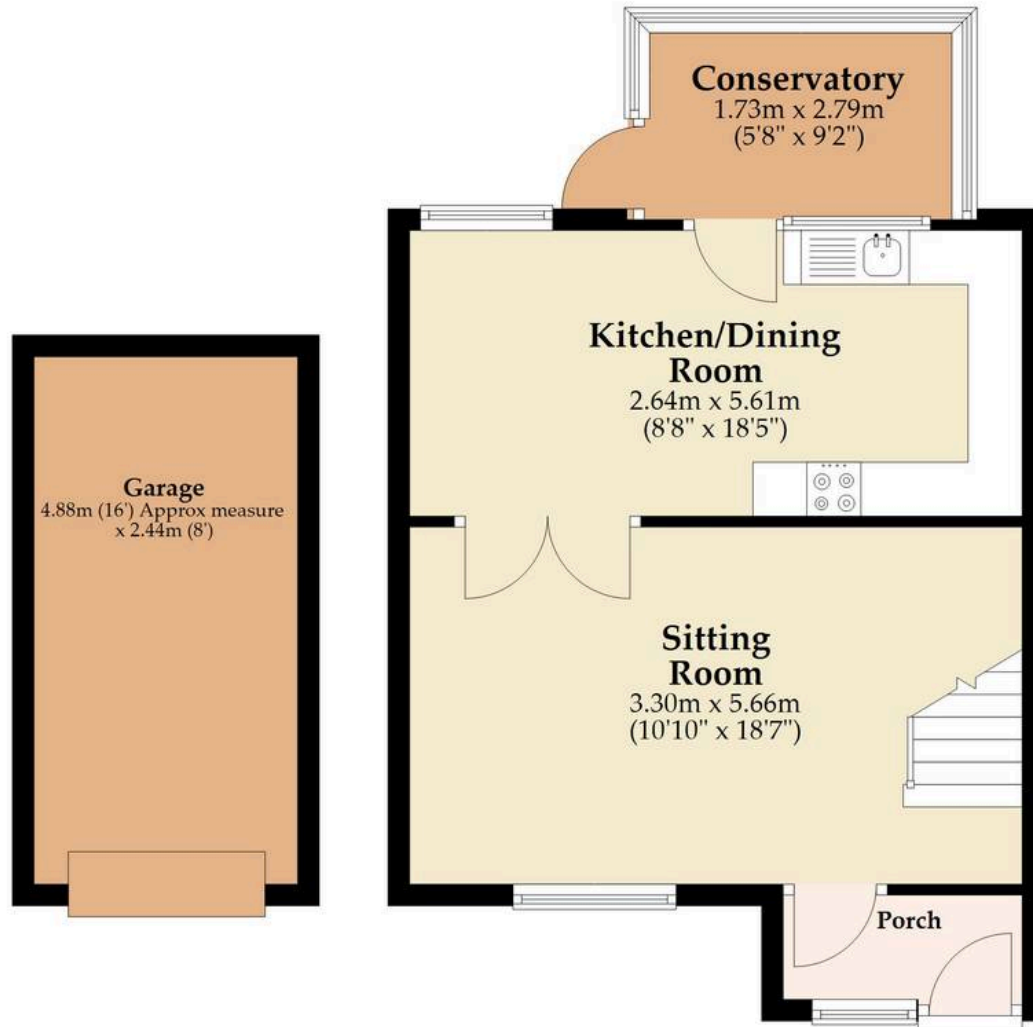
This property will be sold freehold.

Connected to mains water, electricity, gas and drainage.



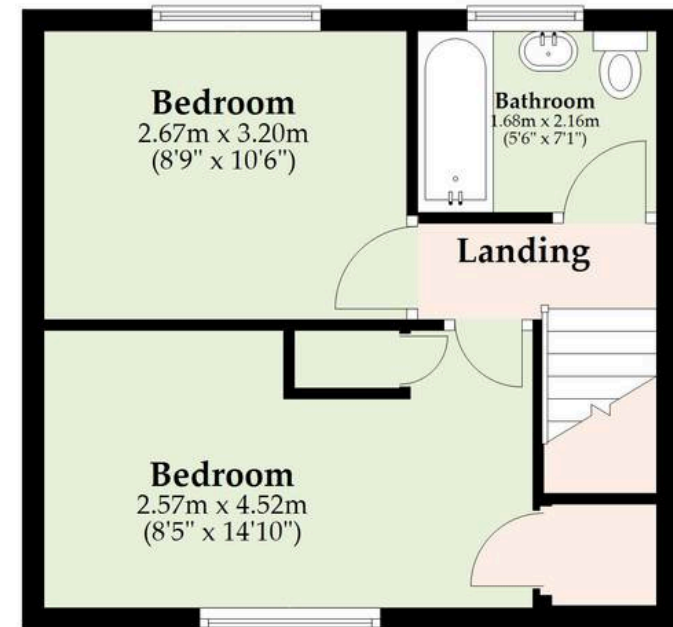
Ground Floor

Approx. 53.4 sq. metres (575.2 sq. feet)



First Floor

Approx. 29.7 sq. metres (319.7 sq. feet)



Total area: approx. 83.1 sq. metres (894.9 sq. feet)

Whilst every attempt has been made to ensure the accuracy of the floorplan contained here, measurements of doors, windows, rooms and any other items are approximate and no responsibility is taken for any error, omission or mis-statement. This plan is for illustrative purposes only and should be used as such by any prospective purchaser. The services, systems and appliances shown have not been tested and no guarantee as to their operability or efficiency can be given.

Plan produced using PlanUp.

Dreaming of this home? Let's make it a *reality*.



Meet *Abi*
Branch Partner



Meet *Karol*
Property Lister



Meet *Claire*
Aftersales Team Leader

Minors & Brady
Your home, our market



wroxham@minorsandbrady.co.uk



01603 783088



6 Church Road, Wroxham, Norwich, NR12 8UG

CAISTER-ON-SEA | DEREHAM | DISS | NORWICH | OULTON BROAD | WROXHAM



How can we support

- ✓ Residential Mortgages
- ✓ Protection & Insurance
- ✓ Buy-to-let (personal and limited company)



Matt Waters
Director and
Principal



Victoria Payne
Mortgage and
Protection Advisor

Offering you quick and professional mortgage advice every step of the way.

T: 01603 210378
E: enquiries@norfolk-mortgages.co.uk