



## Flat 10, 7 Newmans Court Norwich Street, Fakenham

£750 pcm

This stylish one-bedroom apartment in the heart of Fakenham offers modern, comfortable living in a prime town centre location. Featuring a welcoming hallway, an open-plan kitchen and living area with quality fittings, a peaceful double bedroom, and a contemporary bathroom, the home combines practicality with style. Additional benefits include lift access and permit parking, all within easy reach of the town's shops, cafes, and amenities, perfect for those seeking a convenient, low-maintenance lifestyle.

Council Tax band: A

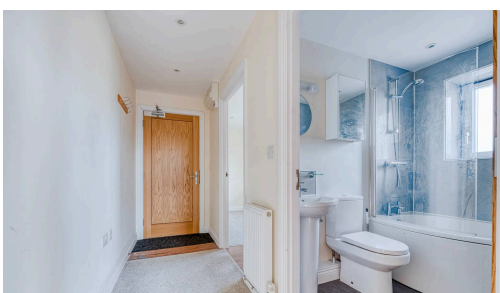
This stylish one-bedroom apartment in the heart of Fakenham offers modern, comfortable living in a prime town centre location. Featuring a welcoming hallway, an open-plan kitchen and living area with quality fittings, a peaceful double bedroom, and a contemporary bathroom, the home combines practicality with style. Additional benefits include lift access and permit parking, all within easy reach of the town's shops, cafes, and amenities, perfect for those seeking a convenient, low-maintenance lifestyle.

### Location

Norwich Street is a central thoroughfare in the historic market town of Fakenham, Norfolk, offering a vibrant blend of residential and commercial amenities. The street is within easy reach of local shops, including independent boutiques, cafes, and convenience stores, while larger supermarkets such as Tesco and Aldi are a short walk or drive away. Families benefit from proximity to a range of schools, including Fakenham Junior School, Fakenham Infant and Nursery School, and the nearby Sculthorpe



This stylish one-bedroom apartment in the heart of Fakenham offers modern, comfortable living in a prime town centre location. Featuring a welcoming hallway, an open-plan kitchen and living area with quality fittings, a peaceful double bedroom, and a contemporary bathroom, the home combines practicality with style. Additional benefits include lift access and permit parking, all within easy reach of the town's shops, cafes, and amenities, perfect for those seeking a convenient, low-maintenance lifestyle.



This stylish one-bedroom apartment in the heart of Fakenham offers modern, comfortable living in a prime town centre location. Featuring a welcoming hallway, an open-plan kitchen and living area with quality fittings, a peaceful double bedroom, and a contemporary bathroom, the home combines practicality with style. Additional benefits include lift access and permit parking, all within easy reach of the town's shops, cafes, and amenities, perfect for those seeking a convenient, low-maintenance lifestyle.

### **Location**

Norwich Street is a central thoroughfare in the historic market town of Fakenham, Norfolk, offering a vibrant blend of residential and commercial amenities. The street is within easy reach of local shops, including independent boutiques, cafes, and convenience stores, while larger supermarkets such as Tesco and Aldi are a short walk or drive away. Families benefit from proximity to a range of schools, including Fakenham Junior School, Fakenham Infant and Nursery School, and the nearby Sculthorpe Church of England Primary Academy.

Healthcare facilities are readily accessible, with the Fakenham Medical Centre and local dental practices serving the community. In terms of transport, Norwich Street is well-connected: the town is served by regular bus routes linking Fakenham to Norwich and surrounding villages, and main roads such as the A148 provide convenient access to North Norfolk's coastal towns. This combination of shops, schools, healthcare, and transport makes Norwich Street a highly practical and desirable location for residents.

### **Newmans Court, Norwich Street**

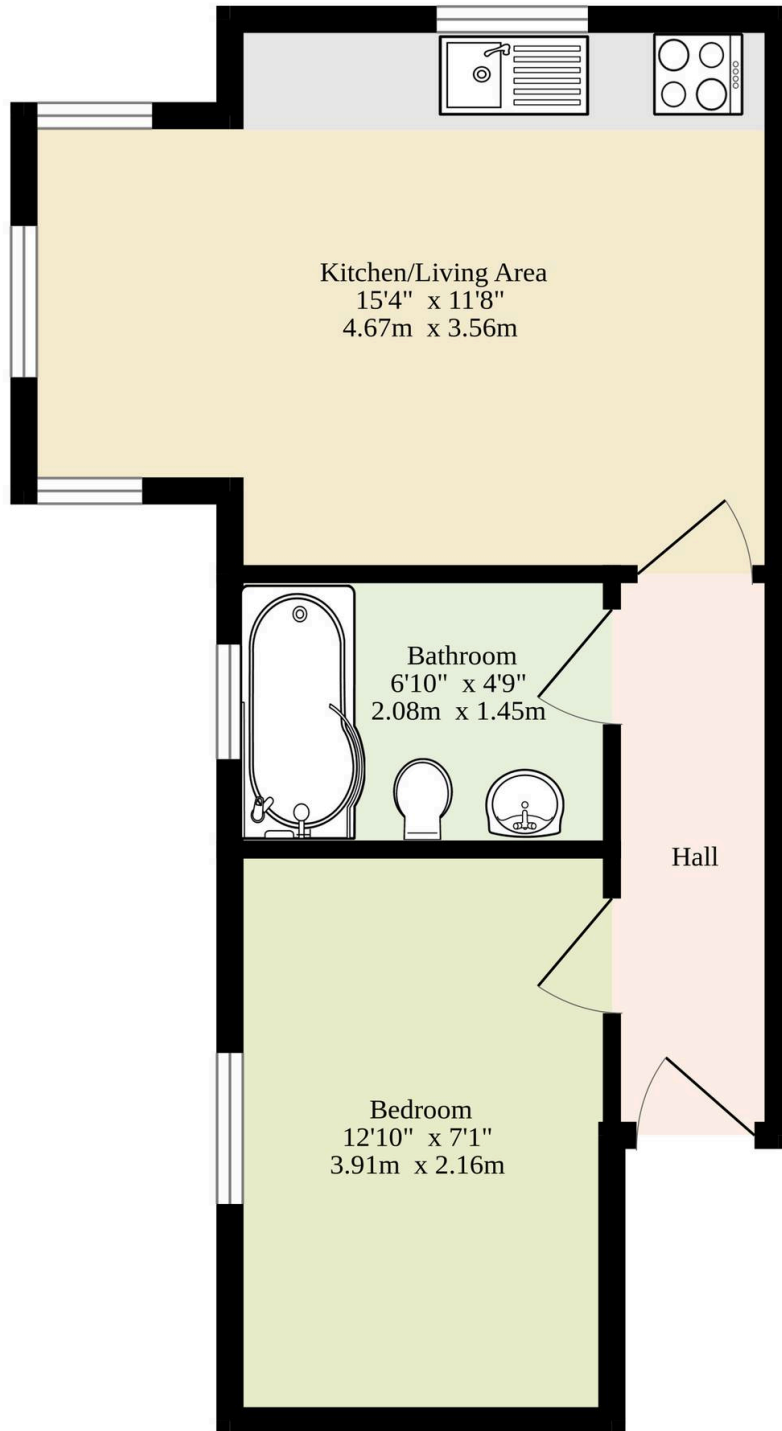
Step inside to a welcoming entrance hallway that sets the tone for this stylish home. The open-plan kitchen and living area provides a seamless flow, ideal for relaxing after a busy day or entertaining loved ones. The kitchen is thoughtfully equipped with quality cabinetry, an integrated oven, a fridge with an ice box, and a washing machine, ensuring both practicality and style.

The double bedroom offers comfort and privacy, while the modern bathroom features a sleek three-piece suite, providing a contemporary space to refresh and unwind. Additional conveniences include lift access and permit parking, adding ease to everyday living.

Perfectly suited for professionals seeking a comfortable and low-maintenance lifestyle in a thriving market town, this



339 sq.ft. (31.5 sq.m.) approx.



**TOTAL FLOOR AREA : 339 sq.ft. (31.5 sq.m.) approx.**

Whilst every attempt has been made to ensure the accuracy of the floorplan contained here, measurements of doors, windows, rooms and any other items are approximate and no responsibility is taken for any error, omission or mis-statement. This plan is for illustrative purposes only and should be used as such by any prospective purchaser. The services, systems and appliances shown have not been tested and no guarantee as to their operability or efficiency can be given.

Made with Metropix ©2025

You can include any text here. The text can be modified upon generating your brochure.

You can include any text here. The text can be modified upon generating your brochure.

