



CHARLES  
WESLEY  
COURT

Flat 5, Charles Wesley Court 46-50 Belvoir Street, Norwich

Norwich



Minors & Brady

# Flat 5

Charles Wesley Court 46-50 Belvoir Street, Norwich

Positioned in a prime Norwich setting and offered chain free, this first-floor flat provides an appealing, well-arranged home for first-time buyers or investors. A private porch entrance leads into a welcoming hallway, opening through to a light-filled living room with an archway to the kitchen, which features fitted cabinetry, an integrated oven and hob, a breakfast-bar unit and space for appliances. The property also offers a comfortable double bedroom with built-in storage and a bathroom with a classic three-piece suite, creating a practical and well-presented base in this vibrant city location.

- Offered chain free
- First-floor flat positioned within a prime location of the vibrant city of Norwich
- Easy access to the city centre, offering shopping malls, restaurants, education options and transport links
- Suitable choice for first-time buyers or investors
- Spacious living room that is filled with natural light, with an arch opening into the kitchen
- Kitchen is fitted with cabinetry, an integrated oven/hob, a breakfast bar unit and areas for your appliances
- Double bedroom with a built-in wardrobe
- Bathroom comprising of a classic three-piece suite
- Allocated parking



# Flat 5

Charles Wesley Court 46-50 Belvoir Street, Norwich

## Belvoir Street

Offered chain free, this first-floor flat presents an appealing opportunity for first-time buyers or investors, positioned in a prime location within the vibrant city of Norwich. Accessed via a private porch entrance, the property opens into a welcoming hallway that leads through to well-arranged accommodation.

The living room is a generous, light-filled space, enhanced by a wide archway that creates an open connection to the kitchen. The kitchen itself is fitted with cabinetry, an integrated oven and hob, a practical breakfast-bar unit and designated areas for appliances.

A comfortable double bedroom features a built-in wardrobe, while the bathroom offers a classic three-piece suite, providing everything required for day-to-day convenience.

With its excellent setting, private entrance and well-proportioned layout, this flat represents a strong choice for those seeking a home or investment in one of Norwich's most accessible and lively areas.

## Agents Notes

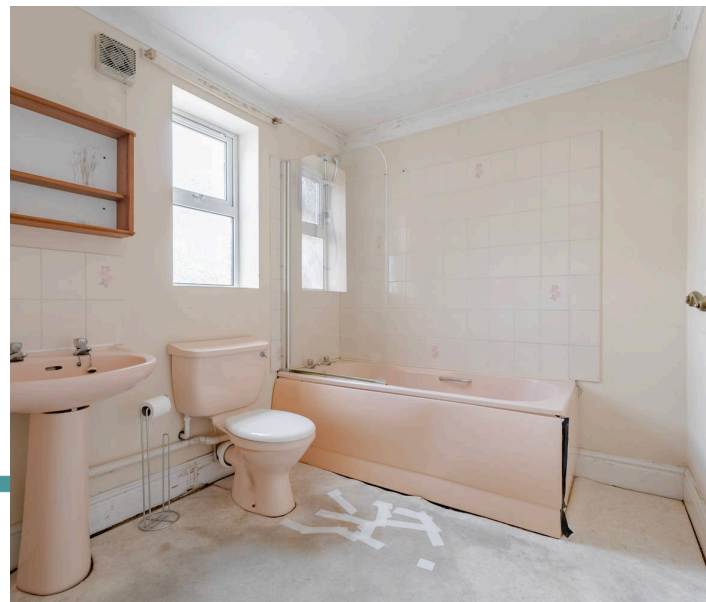
Freehold

Connected to mains water, electricity and drainage.

Oil central heating.

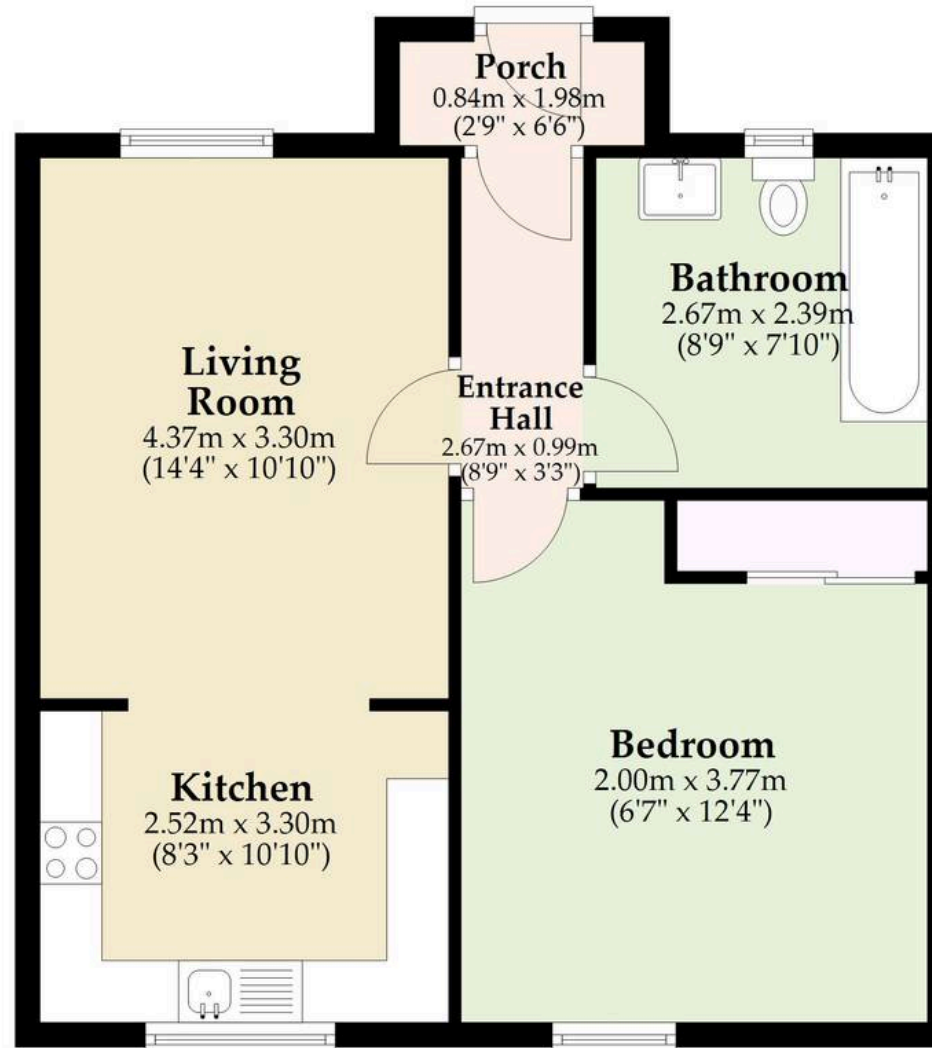
Allocated parking at the rear (Minors & Brady are unable to verify this information).

**M&B**



## Ground Floor

Approx. 51.2 sq. metres (550.6 sq. feet)



Total area: approx. 51.2 sq. metres (550.6 sq. feet)

Whilst every attempt has been made to ensure the accuracy of the floorplan contained here, measurements of doors, windows, rooms and any other items are approximate and no responsibility is taken for any error, omission or mis-statement. This plan is for illustrative purposes only and should be used as such by any prospective purchaser. The services, systems and appliances shown have not been tested and no guarantee as to their operability or efficiency can be given.

Plan produced using PlanUp.

# Dreaming of this home? Let's make it a *reality*.



Meet *Liam*  
Branch Manager



Meet *Nagilla*  
Aftersales Team Leader



Meet *Tristan*  
Senior Property Lister

Minors & Brady  
*Your home, our market*

 [norwich@minorsandbrady.co.uk](mailto:norwich@minorsandbrady.co.uk)

 01603 365085

 107 Unthank Road, Norwich, NR2 2PE

CAISTER-ON-SEA | DEREHAM | DISS | NORWICH | OULTON BROAD | WROXHAM



## How can we support

- ✓ Residential Mortgages
- ✓ Protection & Insurance
- ✓ Buy-to-let (personal and limited company)



**Matt Waters**  
Director and  
Principal



**Victoria Payne**  
Mortgage and  
Protection Advisor

Offering you quick and professional mortgage advice every step of the way.

T: 01603 210378  
E: [enquiries@norfolk-mortgages.co.uk](mailto:enquiries@norfolk-mortgages.co.uk)