



67 Romany Road, Norwich

Norwich



Minors & Brady

67 Romany Road

A smart first step onto the property ladder, this chain-free two-bedroom mid-terrace home offers comfortable, low-maintenance living. The property benefits from off-road parking, a private rear garden, and well-proportioned accommodation throughout. On the ground floor, there is a fitted kitchen, a handy cloakroom and a bright lounge ideal for everyday living. Upstairs, the main bedroom enjoys the privacy of an en suite, while the second bedroom features built-in storage with sliding doors. Double glazing and gas central heating add to the home's practical appeal. Well-suited to first-time buyers, this is a property that combines convenience, comfort and value.

- Two-bedroom mid-terrace home
- Offered with no onward chain
- Ideal first-time purchase
- Main bedroom with en suite
- Second bedroom with built-in storage and sliding doors
- Bright and well-proportioned lounge
- Fitted kitchen with ground floor cloakroom
- Private rear garden
- Gas central heating and double glazing
- Off-road parking





M&B

67 Romany Road

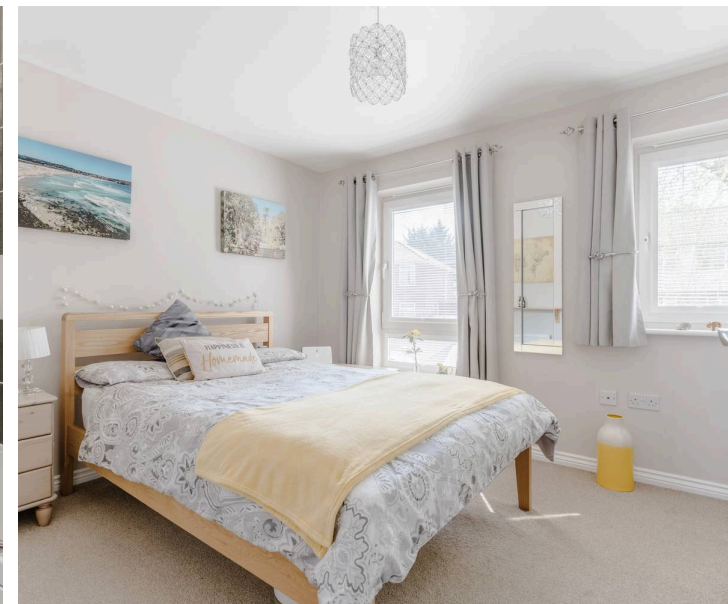
The Location

Romany Road, located in Norwich, is situated in a residential area known for its family-friendly environment and strong community spirit. The road is conveniently positioned within proximity to a range of local amenities, including shops, schools, and parks, making it an ideal location for families and professionals alike.

Residents can enjoy easy access to the city centre, just a short distance away, offering a variety of shopping, dining, and cultural attractions.

Romany Road is well-served by public transport, with regular bus services connecting to various parts of the city, and Norwich Train Station is also nearby, providing direct links to London and other major cities.

Additionally, nearby green spaces, such as Mousehold Heath and the River Wensum, offer ample opportunities for outdoor recreation and leisure activities, enhancing the appeal of this desirable location.



67 Romany Road

Romany Road, Norwich

This well-presented two-bedroom mid-terrace home represents a great first purchase and is offered with no onward chain. Benefiting from off-road parking and a private rear garden, the property provides comfortable and practical living in a convenient setting.

The ground floor comprises a welcoming entrance hall leading to a fitted kitchen, a useful ground floor cloakroom and a bright lounge, creating a pleasant space for everyday living and entertaining.

To the first floor are two bedrooms, including a main bedroom with its own en suite. The second bedroom features built-in storage with sliding doors, offering excellent practicality while remaining a versatile space. A family bathroom completes the accommodation.

Further benefits include gas central heating and double glazing throughout. With its appealing layout, private garden and chain-free position, this property is highly recommended for first-time buyers and early viewing is advised to appreciate all it has to offer.

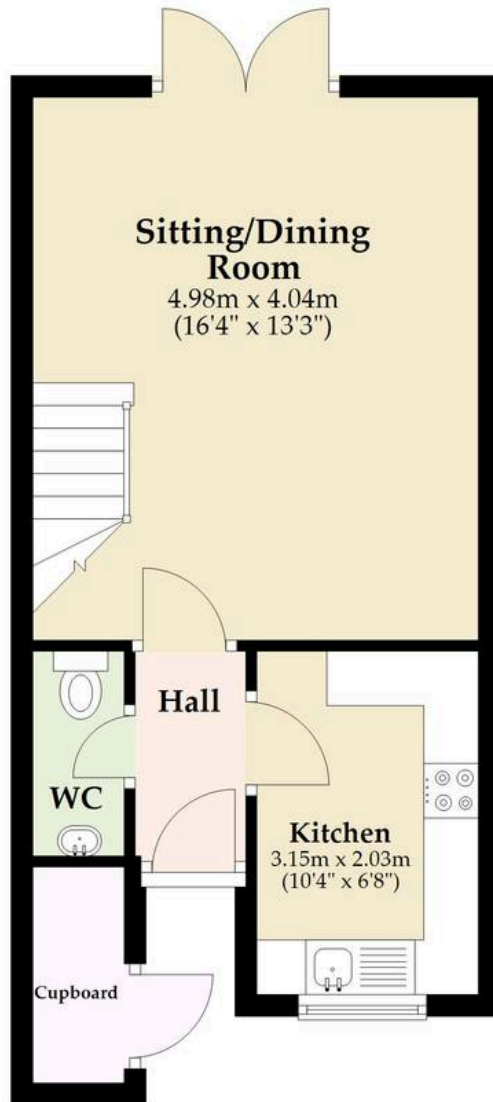
Agents Note

This property will be sold freehold and connected to mains water, electricity, gas and drainage.



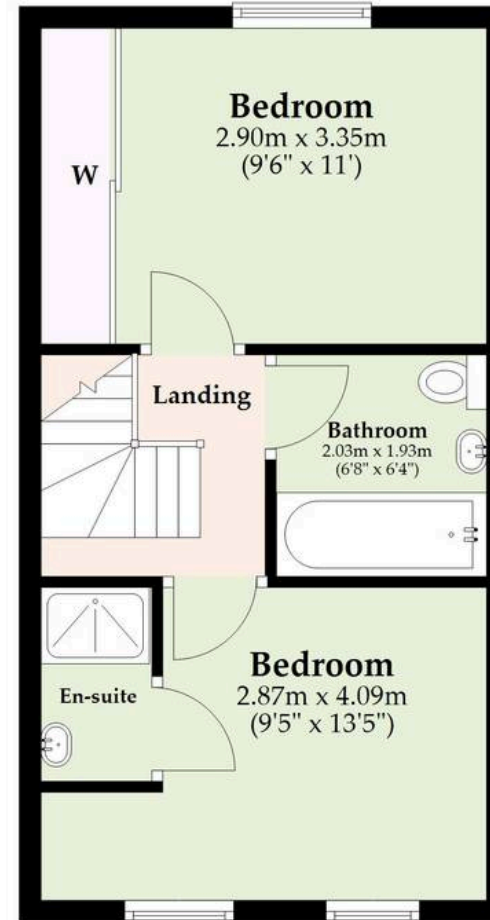
Ground Floor

Approx. 32.6 sq. metres (351.3 sq. feet)



First Floor

Approx. 30.5 sq. metres (328.0 sq. feet)
(excluding En-suite)



Total area: approx. 63.1 sq. metres (679.2 sq. feet)

Whilst every attempt has been made to ensure the accuracy of the floorplan contained here, measurements of doors, windows, rooms and any other items are approximate and no responsibility is taken for any error, omission or mis-statement. This plan is for illustrative purposes only and should be used as such by any prospective purchaser. The services, systems and appliances shown have not been tested and no guarantee as to their operability or efficiency can be given.

Plan produced using PlanUp.

Dreaming of this home? Let's make it a *reality*.



Meet *Liam*
Branch Manager



Meet *Nagilla*
Aftersales Team Leader



Meet *Tristan*
Senior Property Lister

Minors & Brady
Your home, our market

 norwich@minorsandbrady.co.uk

 01603 365085

 107 Unthank Road, Norwich, NR2 2PE

CAISTER-ON-SEA | DEREHAM | DISS | NORWICH | OULTON BROAD | WROXHAM



How can we support

- ✓ Residential Mortgages
- ✓ Protection & Insurance
- ✓ Buy-to-let (personal and limited company)



Matt Waters
Director and
Principal



Victoria Payne
Mortgage and
Protection Advisor

Offering you quick and professional mortgage advice every step of the way.

T: 01603 210378
E: enquiries@norfolk-mortgages.co.uk