



3 Needham Place St. Stephens Square, Norwich

Norwich



Minors & Brady

3 Needham Place St. Stephens Square

Norwich

A stylish and well-positioned city-centre duplex offering space, style and standout convenience. This two-double-bedroom apartment is set within a striking Grade II listed building, blending period charm with practical modern living across two floors. The layout is thoughtfully arranged, with a bright lounge/dining space, a well-equipped kitchen/breakfast room, and the added benefit of both a shower room and separate bathroom. Upstairs, two generous double bedrooms provide comfortable and versatile accommodation. Residents also enjoy access to a communal rooftop terrace, offering a rare outdoor retreat in the heart of the city. All of this is positioned just moments from Norwich's shops, restaurants, historic landmarks and transport links, making it ideal for both lifestyle buyers and investors.

- Two double bedroom split-level duplex apartment
- Situated within a striking Grade II listed building
- Prime Norwich city centre location on St Stephens Square
- Spacious lounge/dining room with good natural light
- Well-equipped kitchen/breakfast room with integrated appliances
- Ground floor shower room and separate first-floor bathroom
- Secure intercom entry with lift access
- Access to a communal rooftop terrace with seating areas
- Double glazing and electric storage heating
- Within walking distance of shops, restaurants, and historic landmarks



M&B



M&B

3 Needham Place St. Stephens Square

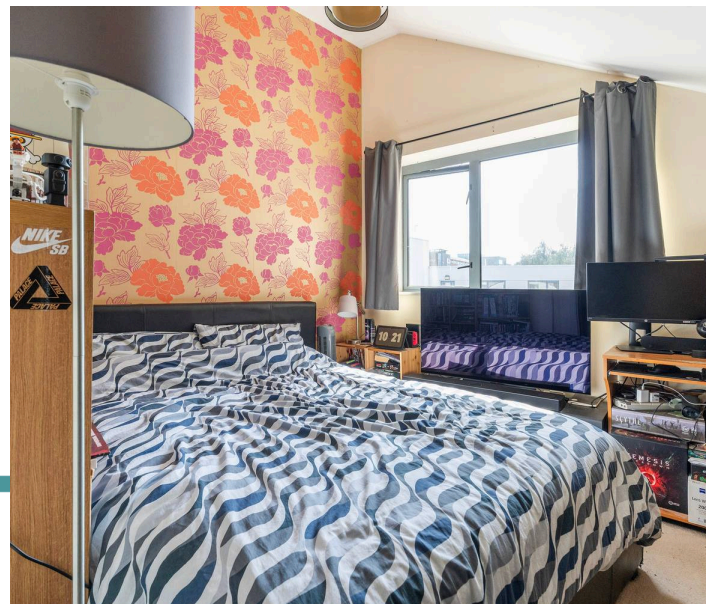
Norwich

The Location

Set within the heart of Norwich, Needham Place at St. Stephens Square offers a highly convenient city-centre setting, perfect for those who want everything close at hand. Positioned within the sought-after NR1 postcode, the property benefits from immediate access to a wide range of shops, supermarkets, cafés and restaurants, with Chantry Place and the historic city centre just a short walk away.

The surrounding area blends Norwich’s rich heritage with everyday practicality. Characterful streets, period buildings and nearby landmarks such as the city’s cathedral and market help give the area its distinct sense of place, while excellent transport links, including Norwich train station, make it well suited for commuters and those travelling further afield.

For leisure, residents can enjoy riverside walks along the nearby River Wensum, as well as green spaces such as Chapelfield Gardens, offering a welcome balance to city living. Cultural attractions, theatres and independent eateries are all within easy reach, supporting a vibrant yet accessible lifestyle.



M&B

3 Needham Place St. Stephens Square

Norwich

Needham Place, St. Stephens Square

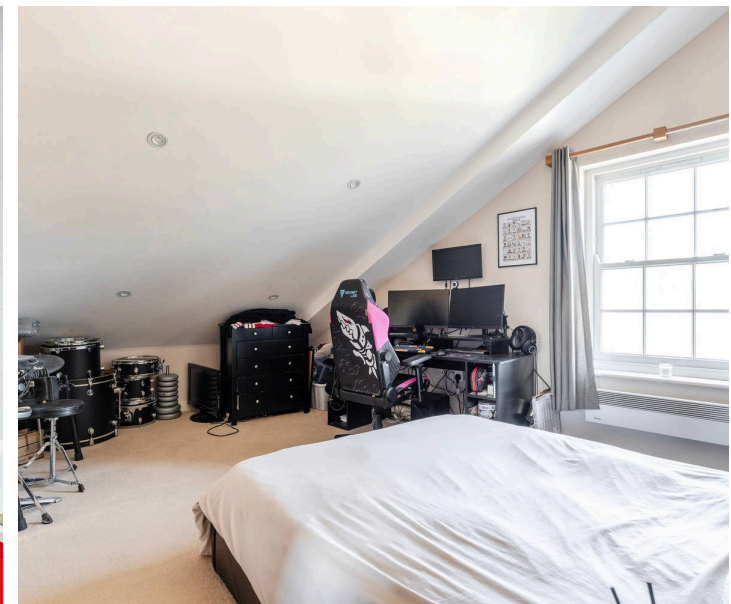
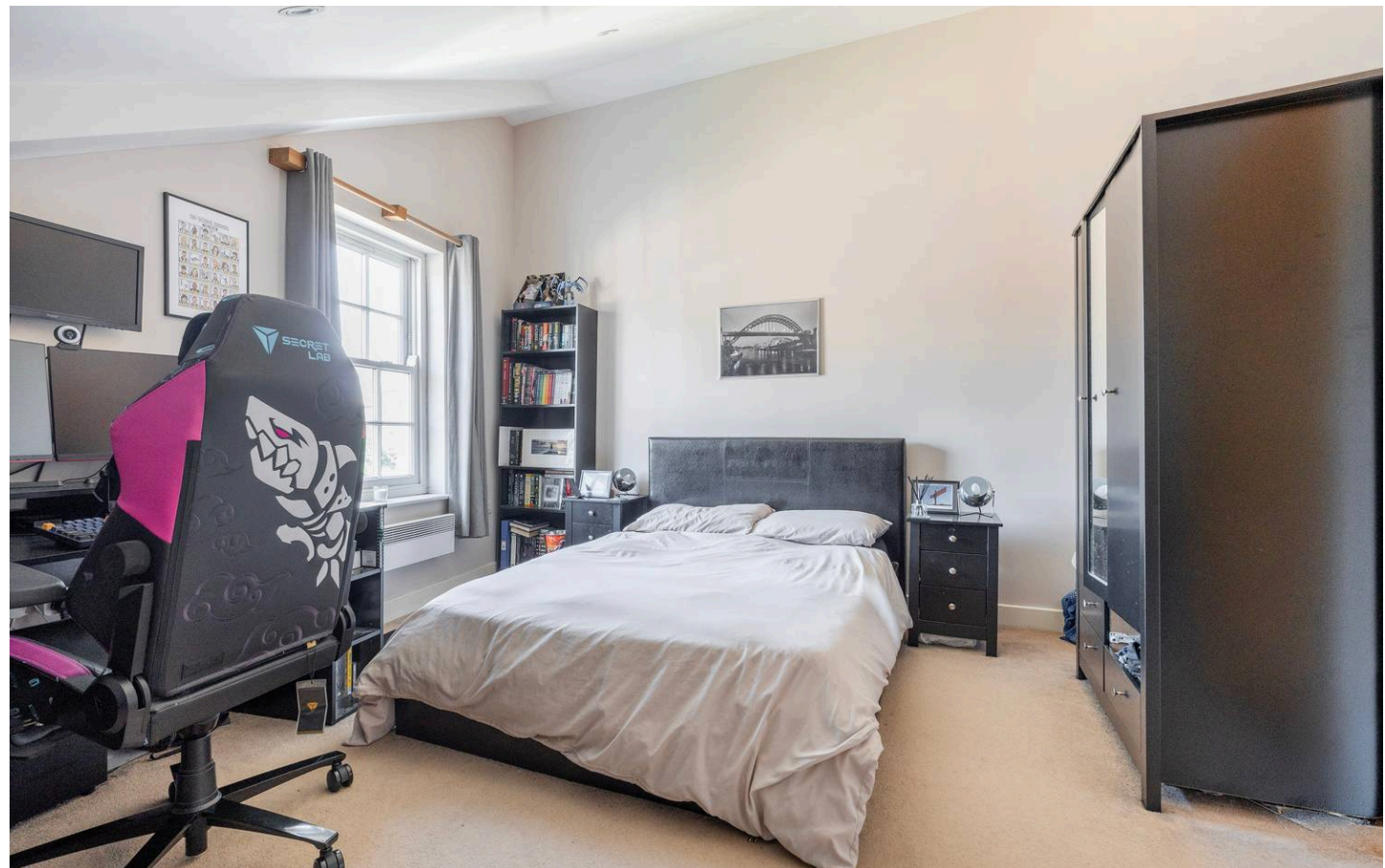
Set within a striking Grade II listed building in the heart of Norwich city centre, this two-bedroom split-level duplex apartment offers a unique blend of character, space, and convenience.

Arranged over two floors, the property provides well-balanced accommodation ideally suited to city living, whether as a main residence, investment, or lock-up-and-leave base.

Accessed via a secure intercom system, residents benefit from both lift and stair access, with entry leading into a private hallway. From here, the ground floor accommodation unfolds with a practical and well-planned layout. The kitchen/breakfast room is fitted with a range of wall and base units complemented by integrated appliances, offering a functional yet comfortable space for everyday use.

A separate shower room on this level adds flexibility, while the lounge/dining room provides a welcoming setting to relax or entertain, enhanced by good natural light and a sense of openness.

To the first floor, the apartment continues to impress with two well-proportioned double bedrooms, each offering comfortable accommodation and versatility for different living arrangements.



M&B

3 Needham Place St. Stephens Square

Norwich

The main bathroom is also located on this level and is fitted with a full-size bath and shower over, providing a second washing facility to complement the ground floor shower room. This dual arrangement adds a level of practicality that is particularly appealing for shared living or when hosting guests.

Additional features include double glazing and electric storage heating, ensuring comfort and efficiency throughout the year, while retaining the character expected of a listed building.

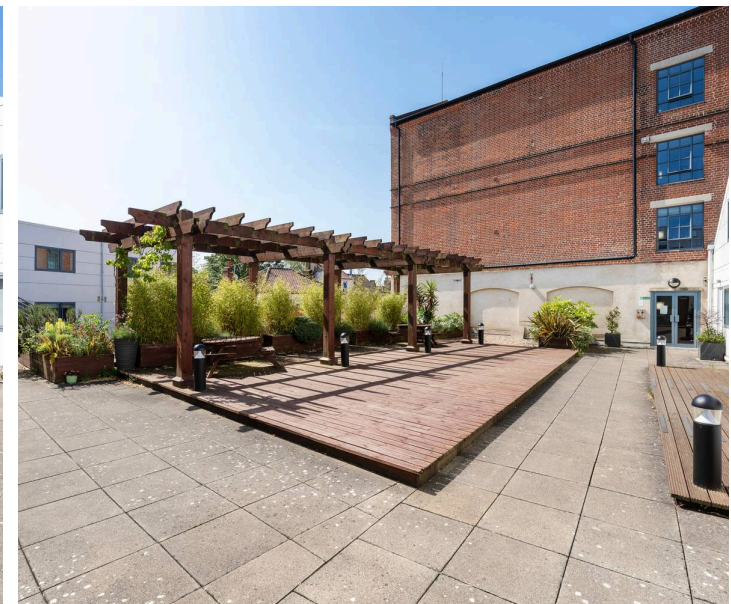
One of the notable benefits of the development is access to a communal rooftop terrace. This elevated outdoor space is mainly decked and thoughtfully arranged with seating areas, offering residents a place to unwind, socialise, or enjoy views across the surrounding cityscape, a valuable addition in such a central setting.

Agents Note

This property will be sold leasehold with 105 years remaining.

Connected to mains water, electricity and drainage.

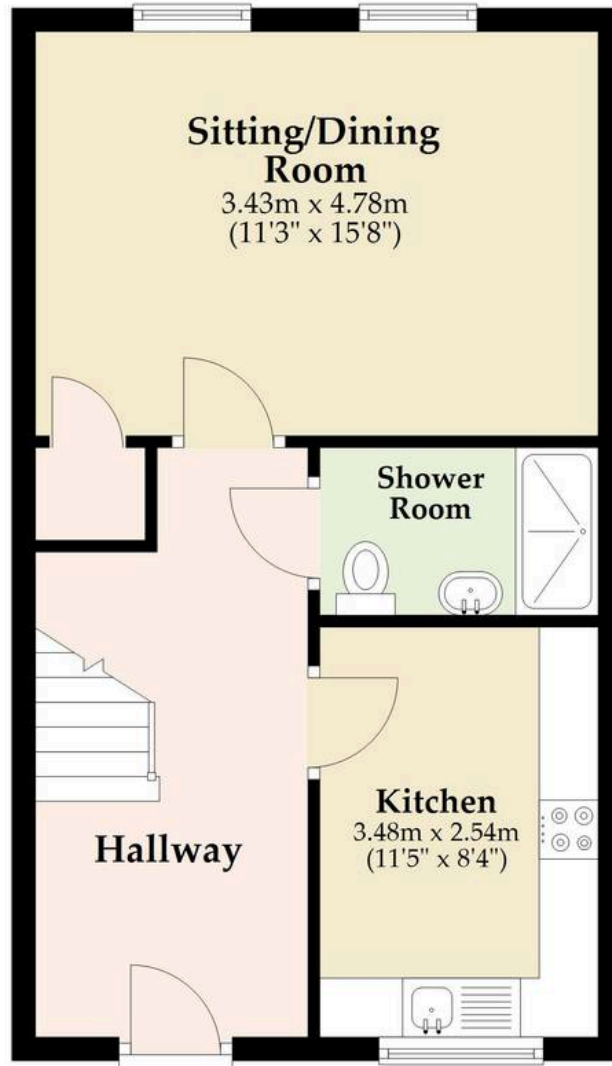
Charges for the apartment: £281.98 × 12 including water too.



M&B

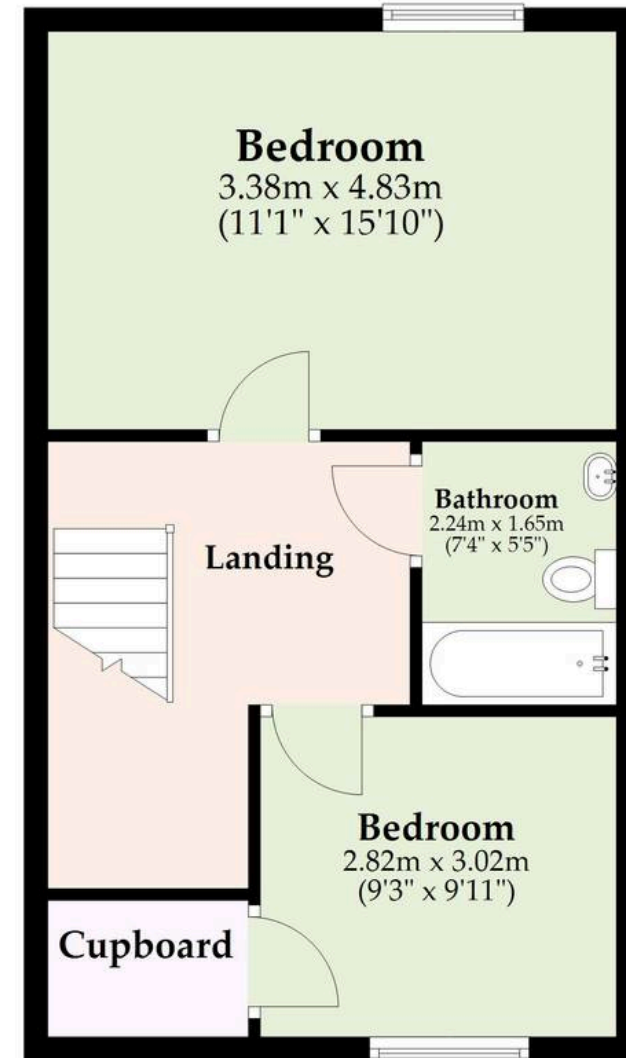
Ground Floor

Approx. 41.1 sq. metres (442.8 sq. feet)



First Floor

Approx. 41.5 sq. metres (446.4 sq. feet)



Total area: approx. 82.6 sq. metres (889.2 sq. feet)

Whilst every attempt has been made to ensure the accuracy of the floorplan contained here, measurements of doors, windows, rooms and any other items are approximate and no responsibility is taken for any error, omission or mis-statement. This plan is for illustrative purposes only and should be used as such by any prospective purchaser. The services, systems and appliances shown have not been tested and no guarantee as to their operability or efficiency can be given.

Plan produced using PlanUp.

Dreaming of this home? Let's make it a *reality*.



Meet *Liam*
Branch Manager



Meet *Nagilla*
Aftersales Team Leader



Meet *Tristan*
Senior Property Lister

Minors & Brady
Your home, our market

 norwich@minorsandbrady.co.uk

 01603 365085

 107 Unthank Road, Norwich, NR2 2PE

CAISTER-ON-SEA | DEREHAM | DISS | NORWICH | OULTON BROAD | WROXHAM



How can we support

- ✓ Residential Mortgages
- ✓ Protection & Insurance
- ✓ Buy-to-let (personal and limited company)



Matt Waters
Director and
Principal



Victoria Payne
Mortgage and
Protection Advisor

Offering you quick and professional mortgage advice every step of the way.

T: 01603 210378
E: enquiries@norfolk-mortgages.co.uk