



23 Peterkin Road, Norwich

Norwich



Minors & Brady

23 Peterkin Road

Norwich, Norwich

Offered with no onward chain, this well-presented and recently refurbished three-bedroom first-floor flat provides spacious and versatile accommodation within the popular NR4 area of Norwich. Ideal for first-time buyers, investors or those looking for convenient access to the city, the property combines practical living space with an excellent location close to a wide range of amenities, transport links and educational facilities. With generous room proportions, gas central heating and double glazing throughout, the flat offers an excellent opportunity for buyers seeking a property ready to move straight into, while also presenting strong rental potential for buy-to-let investors. The adaptable layout also makes it well-suited to those working from home or buyers wanting additional guest or hobby space, further enhanced by pleasant outlooks over nearby parkland.



M&B

23 Peterkin Road

Norwich, Norwich

- Recently refurbished, well-presented three-bedroom first floor flat situated within the popular south side of Norwich
- Excellent opportunity for first time buyers, investors or those seeking convenient city access
- Offered with no onward chain for a smoother and more straightforward purchase
- Spacious lounge offering comfortable living and dining space filled with natural light
- Fitted kitchen with a range of storage units, work surface space and integrated cooking appliances
- Three versatile bedrooms, including a generous principal bedroom with fitted wardrobes
- Modern bathroom fitted with a shower over bath and heated towel rail
- Benefits from double glazing and gas central heating throughout
- Communal gardens and on-street parking available nearby
- Conveniently located for access to Norwich city centre, the University of East Anglia, Norfolk and Norwich University Hospital, A11 and A47

Council Tax band: A

Tenure: Leasehold

EPC Energy Efficiency Rating: C

EPC Environmental Impact Rating: C



M&B

23 Peterkin Road

Norwich, Norwich

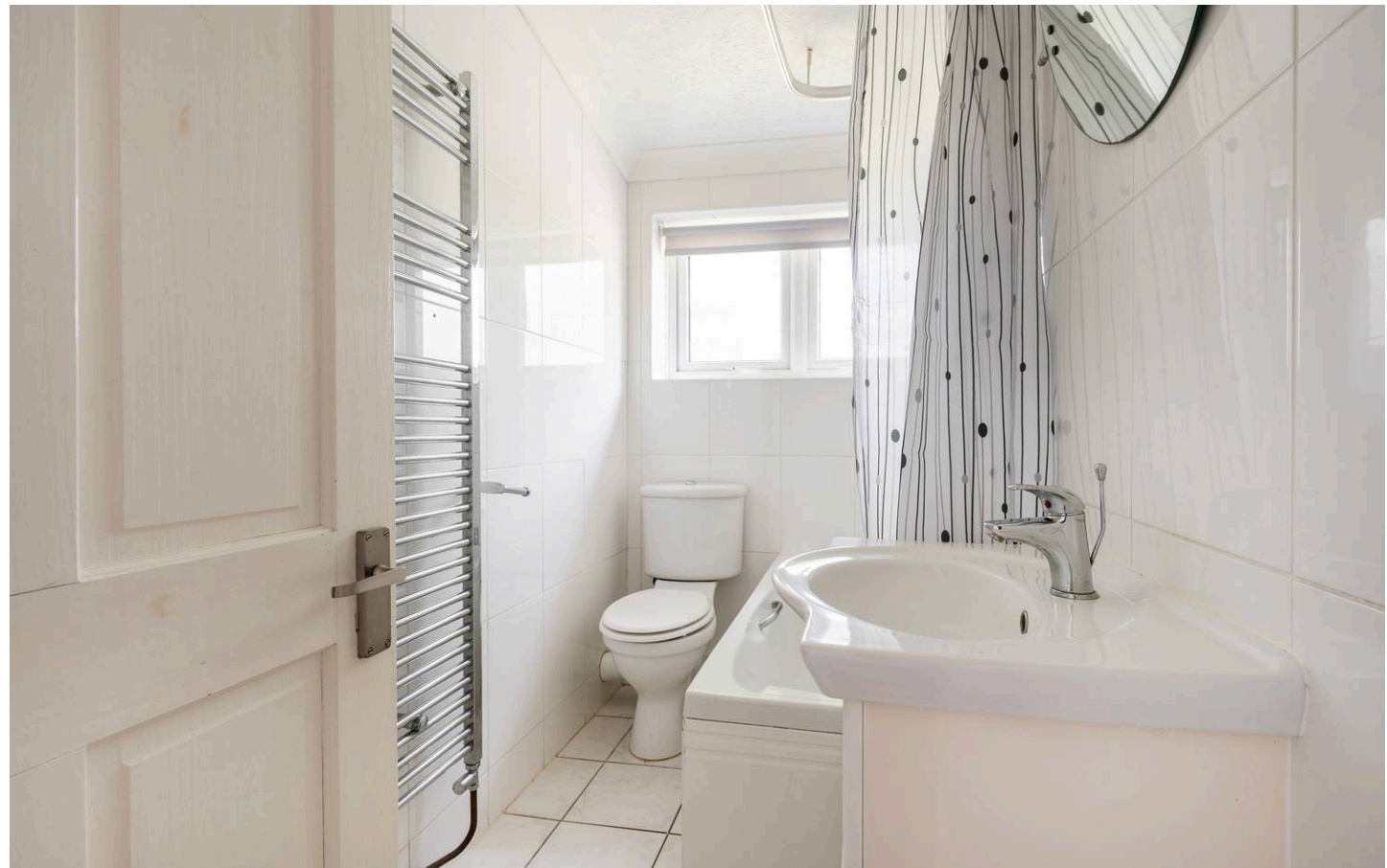
Location

Situated to the south of Norwich within the popular NR4 area, Peterkin Road enjoys a convenient residential setting close to a wide range of amenities and transport links. The area is well regarded for its access to the University of East Anglia, Norfolk and Norwich University Hospital, and the city centre, making it a practical location for day-to-day living. Nearby Eaton and Cringleford provide supermarkets, cafés, schools, and additional local services, while regular public transport routes connect easily across the city.

There is also good access to the A11 and A47 for travel further afield, along with nearby green spaces and walking routes including Eaton Park and the River Yare trails. The location offers a balance of city convenience and access to outdoor space within one of Norwich's most established residential areas.

Peterkin Road

Accessed via a private entrance with stairs rising to the first floor, the accommodation opens into a central hallway with useful built-in storage cupboards. The lounge is a bright and comfortable reception space with ample room for both seating and dining furniture, creating a welcoming environment for relaxing or entertaining.



M&B

23 Peterkin Road

Norwich, Norwich

Positioned separately, the fitted kitchen is arranged with a range of wall and base units, work surfaces and integrated cooking appliances, along with space for further freestanding appliances. The layout provides a practical and efficient space for day-to-day use while maintaining a bright and functional feel.

The property offers three bedrooms, all of which provide flexible accommodation for sleeping arrangements, guests or home working. The principal bedroom benefits from fitted wardrobes, while the remaining bedrooms are well proportioned and served by the bathroom, fitted with a bath and shower over, hand wash basin, WC and heated towel rail.

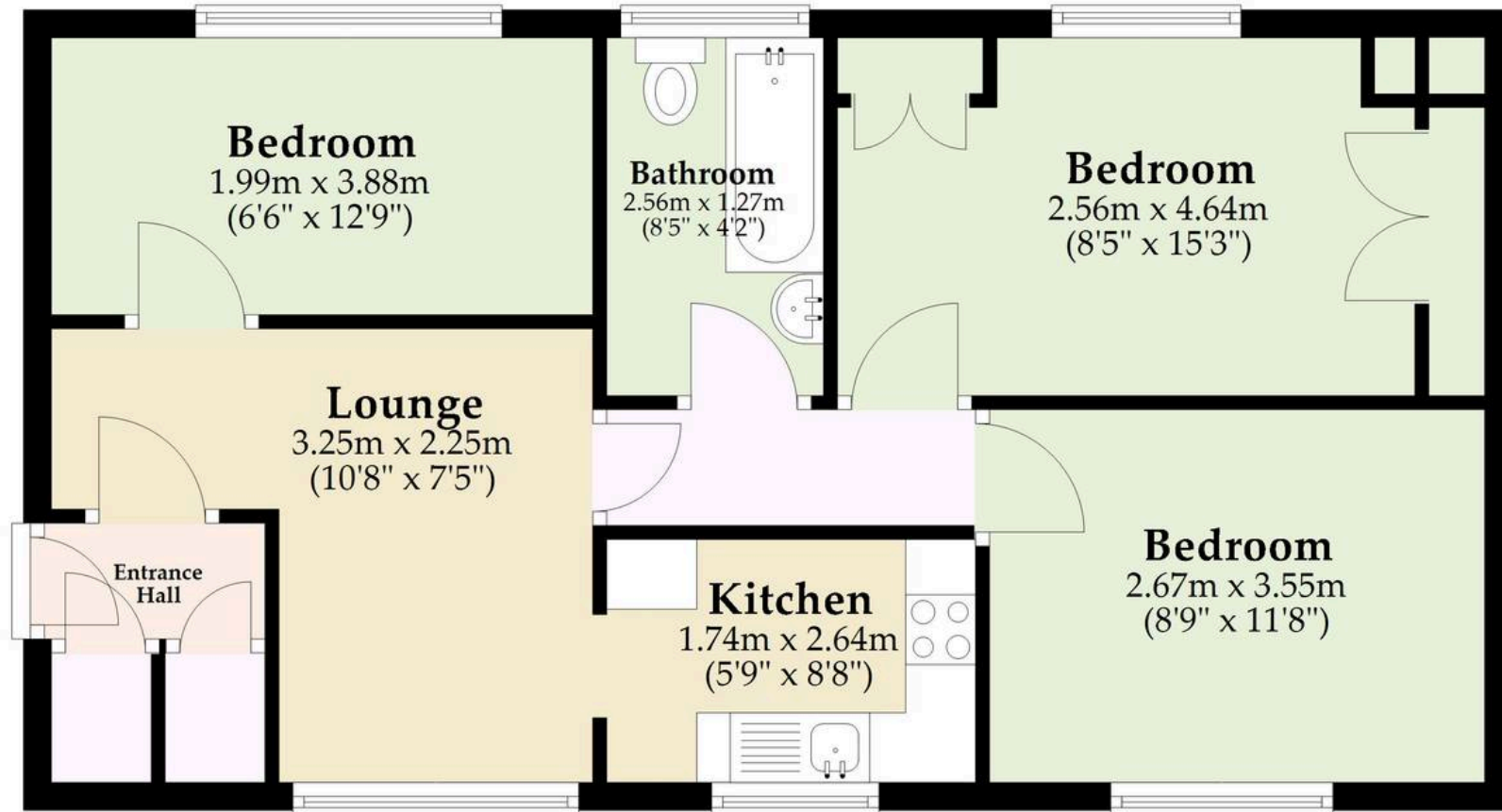
Externally, residents have access to communal gardens and on-street parking nearby. Combining space, convenience and investment potential, this flat presents a fantastic opportunity within a well-connected area of the city.



M&B

First Floor

Approx. 54.0 sq. metres (581.8 sq. feet)



Total area: approx. 54.0 sq. metres (581.8 sq. feet)

Whilst every attempt has been made to ensure the accuracy of the floorplan contained here, measurements of doors, windows, rooms and any other items are approximate and no responsibility is taken for any error, omission or mis-statement. This plan is for illustrative purposes only and should be used as such by any prospective purchaser. The services, systems and appliances shown have not been tested and no guarantee as to their operability or efficiency can be given.

Plan produced using PlanUp.

Dreaming of this home? Let's make it a *reality*.



Meet *Liam*
Branch Manager



Meet *Nagilla*
Aftersales Team Leader



Meet *Tristan*
Senior Property Lister

Minors & Brady
Your home, our market

 norwich@minorsandbrady.co.uk

 01603 365085

 107 Unthank Road, Norwich, NR2 2PE

CAISTER-ON-SEA | DEREHAM | DISS | NORWICH | OULTON BROAD | WROXHAM



How can we support

- ✓ Residential Mortgages
- ✓ Protection & Insurance
- ✓ Buy-to-let (personal and limited company)



Matt Waters
Director and
Principal



Victoria Payne
Mortgage and
Protection Advisor

Offering you quick and professional mortgage advice every step of the way.

T: 01603 210378
E: enquiries@norfolk-mortgages.co.uk