



43b Duke Street, Norwich

Norwich



Minors & Brady

43b Duke Street

Rare city-centre living with the major advantage of off-road parking. Situated in the heart of Norwich, this well-presented two-bedroom second-floor apartment offers a convenient and practical lifestyle close to shops, amenities and transport links. The bright lounge is filled with natural light, providing a comfortable space for both everyday living and entertaining. A well-arranged kitchen offers ample storage and workspace, making it ideal for modern living. Two generous double bedrooms provide flexible accommodation for homeowners, professionals or investors alike. Completing the home is a recently modernised contemporary shower room, along with double glazing, gas central heating and the highly sought-after benefit of private off-road parking.

- Two-bedroom second-floor apartment
- Prime Norwich city-centre location
- Rare off-road parking space to the rear
- Bright and spacious lounge with multiple windows
- Well-arranged kitchen with ample storage and workspace
- Two generous double bedrooms
- Recently modernised contemporary shower room
- Double glazing throughout
- Gas central heating for year-round comfort
- Ideal for first-time buyers, professionals or investors





M&B

43b Duke Street

The Location

Located in the very heart of Norwich, Duke Street offers an enviable position within one of the city's most dynamic and historic areas. Nestled within the vibrant NR3 district, this property combines timeless architectural charm with the convenience of modern city living. Residents benefit from being just a short stroll away from the iconic Norwich Cathedral, whose stunning spire has dominated the city skyline for centuries, as well as the scenic riverside walks, ideal for leisurely strolls or moments of calm away from the bustle of daily life.

The surrounding neighbourhood is rich with character and culture, featuring a diverse selection of boutique shops, independent cafés, artisan stores and well-regarded local restaurants, creating a strong sense of community and charm. For those who need to travel, Norwich Train Station is within easy reach, offering excellent connections for commuters and visitors alike.

Whether you're looking to immerse yourself in the city's vibrant social scene, enjoy quieter historic streets, or simply appreciate the convenience of central living, Duke Street offers a lifestyle that blends heritage, culture and everyday comfort. Its prime location ensures you're never far from everything Norwich has to offer, making it an ideal choice for those seeking energy, accessibility and character in equal measure.



43b Duke Street

Duke Street, Norwich

Situated in the heart of Norwich city centre, this well-presented two-bedroom second-floor apartment offers a practical and convenient lifestyle with the added benefit of off-road parking. The property is ideal for first-time buyers, professionals or investors seeking a centrally located home within easy reach of shops, amenities and transport links.

The apartment is accessed via a communal entrance with stairs leading to the second floor, opening into a private entrance hall that provides access to all rooms. The lounge is a bright and comfortable living space, benefitting from multiple windows that allow natural light to fill the room, creating a pleasant setting for both relaxing and entertaining.

The kitchen is well arranged and functional, fitted with a range of wall and base units, work surfaces along with space for everyday appliances. The layout offers practical work and storage space and enjoys natural light from its window.

There are two well-proportioned bedrooms, both suitable for double use, with one also housing the boiler neatly within a storage cupboard. These rooms offer flexibility for sleeping accommodation, home working or guest use, depending on individual needs.



43b Duke Street

The property benefits from a recently updated and modernised shower room, featuring a large walk-in shower, WC and wash basin, finished in a clean and contemporary style. This space has been thoughtfully upgraded to provide a more modern alternative to a traditional bathroom layout.

Additional features include double glazing and gas central heating, contributing to everyday comfort throughout the year. Externally, the apartment enjoys the valuable advantage of one off-road parking space to the rear, a highly desirable asset for city-centre living.

Agents Note

This property will be sold leasehold.

Ground rent: £0

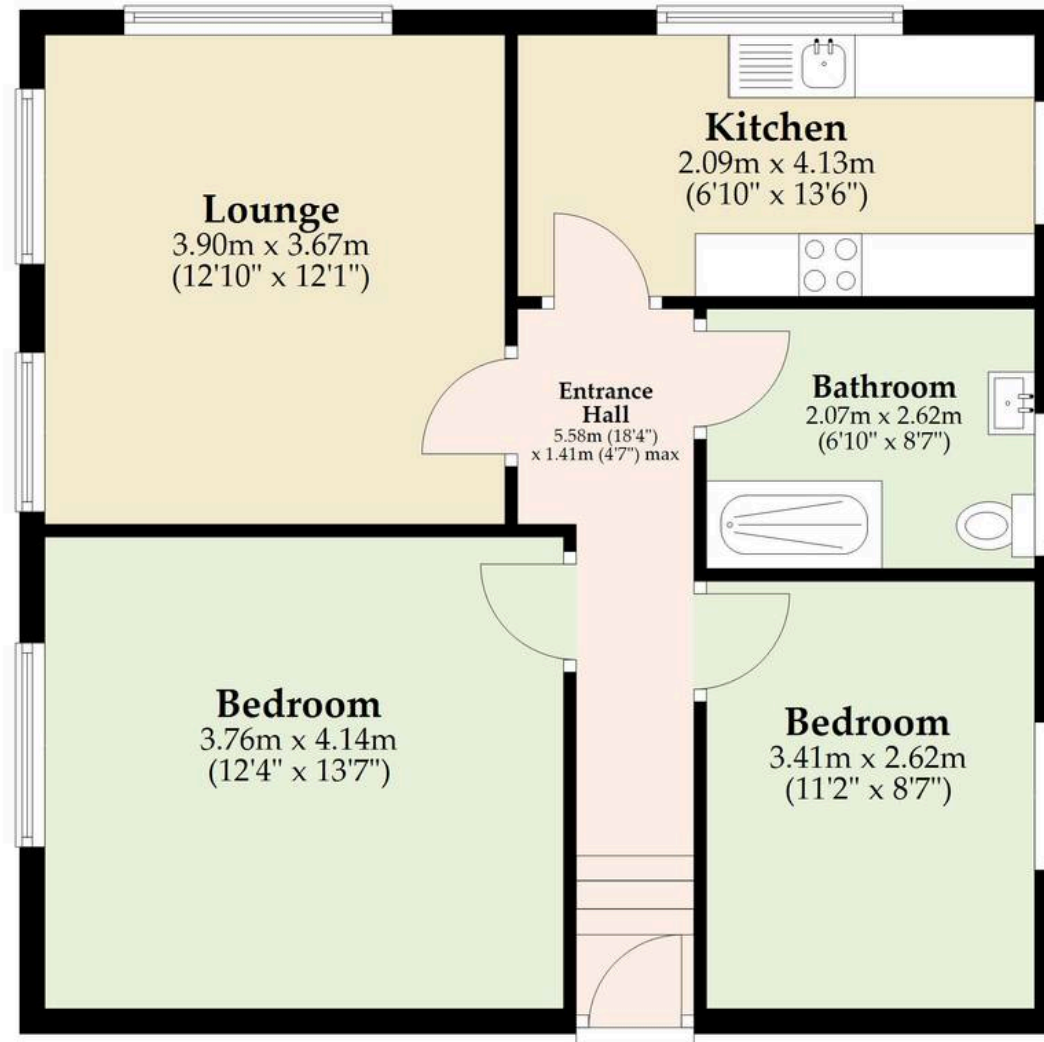
Service charge: £150 paid monthly.



M&B

Second Floor

Approx. 61.4 sq. metres (660.5 sq. feet)



Total area: approx. 61.4 sq. metres (660.5 sq. feet)

Whilst every attempt has been made to ensure the accuracy of the floorplan contained here, measurements of doors, windows, rooms and any other items are approximate and no responsibility is taken for any error, omission or misstatement. This plan is for illustrative purposes only and should be used as such by any prospective purchaser. The services, systems and appliances shown have not been tested and no guarantee as to their operability or efficiency can be given.

Plan produced using PlanUp.

Dreaming of this home? Let's make it a *reality*.



Meet *Liam*
Branch Manager



Meet *Nagilla*
Aftersales Team Leader



Meet *Tristan*
Senior Property Lister

Minors & Brady
Your home, our market

 norwich@minorsandbrady.co.uk

 01603 365085

 107 Unthank Road, Norwich, NR2 2PE

CAISTER-ON-SEA | DEREHAM | DISS | NORWICH | OULTON BROAD | WROXHAM



How can we support

- ✓ Residential Mortgages
- ✓ Protection & Insurance
- ✓ Buy-to-let (personal and limited company)



Matt Waters
Director and
Principal



Victoria Payne
Mortgage and
Protection Advisor

Offering you quick and professional mortgage advice every step of the way.

T: 01603 210378
E: enquiries@norfolk-mortgages.co.uk