



58 Woodward Avenue, Bacton

Stowmarket



Minors & Brady

58 Woodward Avenue

Bacton, Stowmarket

Set in the heart of Bacton's friendly village community, this three-bedroom bungalow offers a reassuringly straightforward way of living, with everything arranged across one well-considered level. Close to Stowmarket and its wider amenities, it's a home that balances comfort with practicality, making it an appealing choice for those looking to downsize, anyone seeking level-access living, or buyers wanting a first home that's easy to settle into. Light, flexible spaces, a bright conservatory opening to the garden, and a low-maintenance outdoor layout all come together to create a property that supports a relaxed, everyday rhythm, and ready for its next owners.

- Well-presented three-bedroom bungalow in a popular village setting
- Convenient access to Stowmarket, local amenities and transport links
- Single-storey layout ideal for downsizers, first-time buyers or level-access living
- Spacious main reception room offering a comfortable central living space
- Modern fitted kitchen with integrated oven and practical storage
- Bright conservatory providing an additional year-round reception area
- Three versatile bedrooms suitable for family use, guests or home working
- Low-maintenance rear garden with lawn, patio and decked seating area
- Well-kept front garden with off-road parking
- A well-located, easy-to-manage home ready for immediate occupation



M&B



M&B

58 Woodward Avenue

Bacton, Stowmarket

Bacton

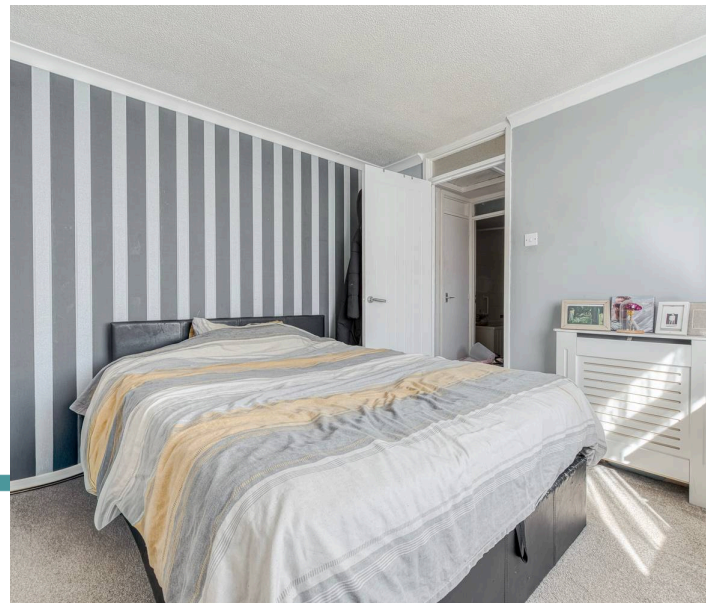
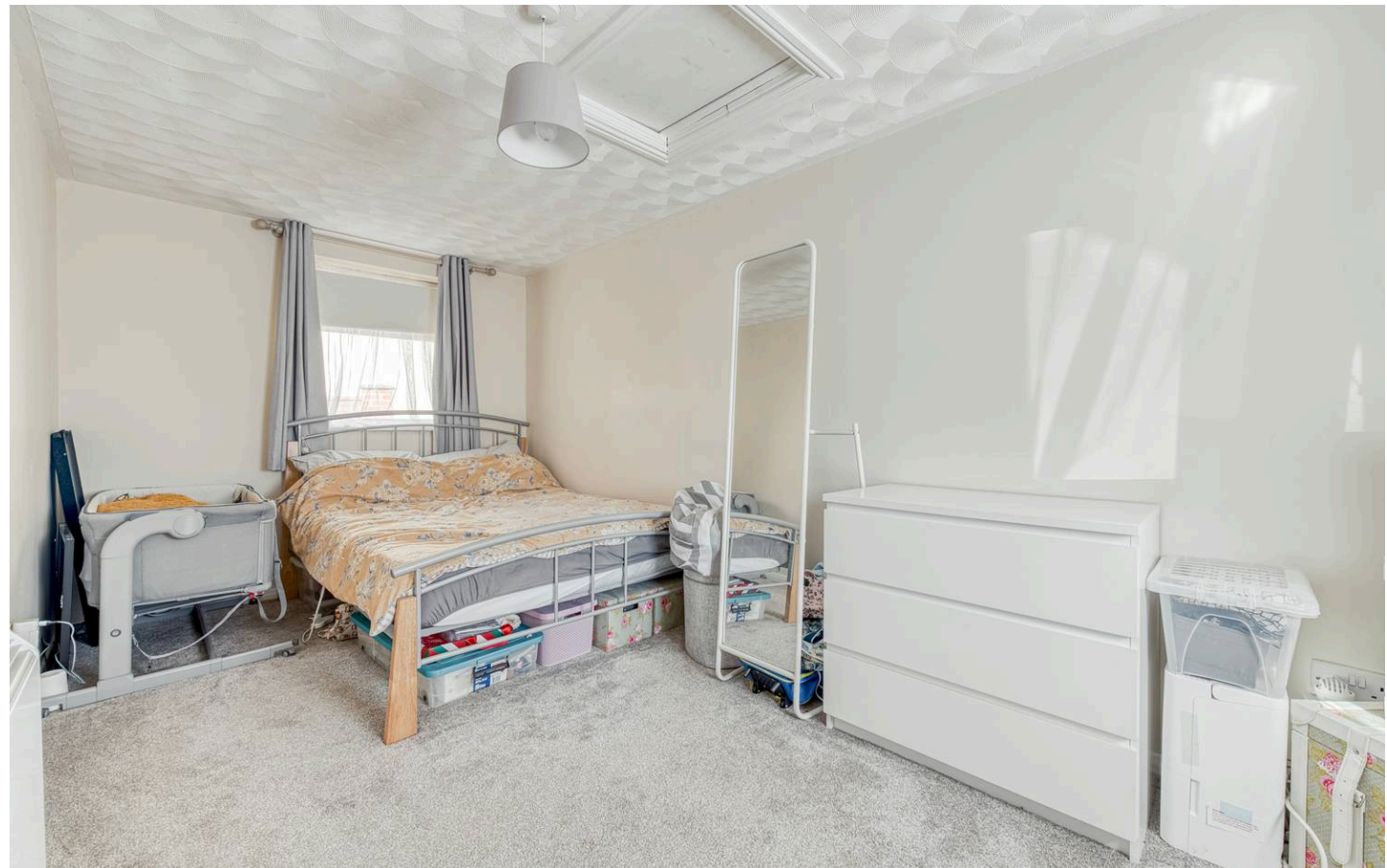
Woodward Avenue sits within the heart of Bacton, a small Suffolk village north-east of Stowmarket, giving you a residential setting that feels peaceful without being isolated. The road is part of a settled, low-traffic neighbourhood close to open fields, footpaths, and the village's main cluster of amenities.

From Woodward Avenue, it's only a short stroll to Shop Green, where you'll find the Londis convenience store, a café, a pub, and everyday services. Finbows Yard, just outside the village, adds practical extras such as a hardware store, small independent shops, and local businesses.

For full weekly shopping, Stowmarket is the nearest town, around 10–12 minutes by car, with Tesco Superstore, Asda, Lidl, and Aldi all close together on the northern and central side of town. This makes larger errands straightforward without needing to travel far.

Families benefit from having Bacton Primary School within the village, easily reached from Woodward Avenue. For secondary education, Stowmarket High School is the closest option, with further choices in Debenham and Stowupland depending on preference and catchment.

Transport links are practical for a rural location. Stowmarket railway station provides direct services to Ipswich, Norwich, and London, making commuting or day trips simple. Local bus routes connect Bacton with Stowmarket, Eye, and nearby villages. Road access via the B1113 and A14 gives clear routes toward Ipswich, Bury St Edmunds, and the A140 corridor.



58 Woodward Avenue

Bacton, Stowmarket

A quietly confident home with an easy sense of comfort, this three-bedroom bungalow sits within the well-regarded village of Bacton, a short distance from Stowmarket and its everyday essentials, transport connections and welcoming community feel. It's a property that lends itself naturally to those seeking the ease of single-storey living, whether you're ready to downsize, want a home that supports a simpler layout, or are taking your first step onto the property ladder.

Inside, the flow is calm and practical. A generous living room forms the heart of the home, offering a warm, relaxed space to unwind. The kitchen pairs modern cabinetry with considered functionality, including an integrated oven, room for a tall fridge-freezer and plumbing in place for laundry appliances.

To the rear, the conservatory brings a lovely sense of light, opening the house to the garden and creating an inviting second living space, ideal for slow mornings, quiet reading, or gathering with friends.

The three bedrooms offer flexibility, whether you need comfortable sleeping spaces, a guest room, or a dedicated home office. A well-kept bathroom with a classic three-piece suite serves the home with ease.

The garden has been designed with low-maintenance living in mind. A small lawn, patio and decked terrace provide pockets of outdoor space for dining, planting or simply enjoying the fresh air without the burden of heavy upkeep.

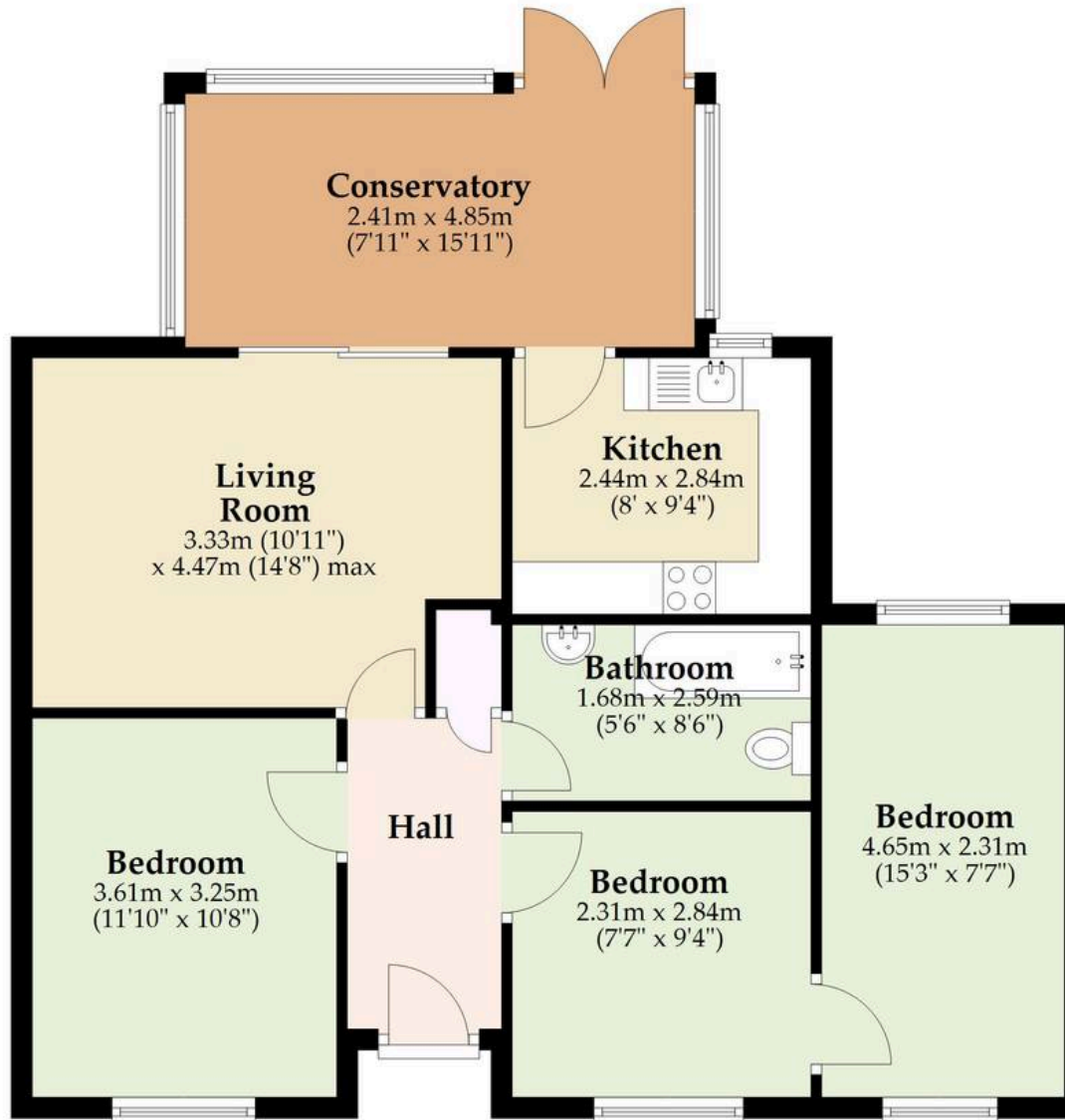
The front garden is equally tidy, with off-road parking adding everyday convenience.

M&B



Ground Floor

Approx. 74.1 sq. metres (797.7 sq. feet)



Total area: approx. 74.1 sq. metres (797.7 sq. feet)

Whilst every attempt has been made to ensure the accuracy of the floorplan contained here, measurements of doors, windows, rooms and any other items are approximate and no responsibility is taken for any error, omission or mis-statement. This plan is for illustrative purposes only and should be used as such by any prospective purchaser. The services, systems and appliances shown have not been tested and no guarantee as to their operability or efficiency can be given.

Plan produced using PlanUp.

Dreaming of this home? Let's make it a reality



Meet *Nicola*
Branch Manager



Meet *Theo*
Property Consultant



Meet *Anya*
Aftersales Progressor

Minors & Brady
Your home, our market

 diss@minorsandbrady.co.uk

 01379 771444

 46-47 Mere Street, Diss, IP22 4AG

CAISTER-ON-SEA | DEREHAM | DISS | NORWICH | OULTON BROAD | WROXHAM



How can we support

- ✓ Residential Mortgages
- ✓ Protection & Insurance
- ✓ Buy-to-let (personal and limited company)



Matt Waters
Director and
Principal



Victoria Payne
Mortgage and
Protection Advisor

Offering you quick and professional mortgage advice every step of the way.

T: 01603 210378
E: enquiries@norfolk-mortgages.co.uk