



10 Mount Street, Diss

Diss



Minors & Brady

10 Mount Street

Diss

Moments from the heart of Diss and set along one of its most admired streets, this Grade II listed cottage offers an inviting blend of character and comfort, creating a home that feels both historic and warmly lived-in. Inside, two reception rooms, a country-style kitchen and three double bedrooms provide well-proportioned spaces enriched by original features, from exposed beams to wooden flooring. Modern touches include a contemporary bathroom with a freestanding tub, a stylish first-floor shower room and a log burner in the living room. The west-facing garden is designed for low-maintenance enjoyment, with planted beds, paved seating areas and a timber storage shed completing the setting.

- Grade II listed cottage in a highly regarded position along Mount Street
- Less than 0.2 miles from Diss town centre and its wide range of amenities
- Two reception rooms, including a living room with a log burner
- Country-style kitchen with butler sink, integrated oven, hob and space for fridge/freezer
- Ground floor bathroom with contemporary three-piece suite, freestanding bathtub and space for laundry appliances
- First-floor shower room with modern three-piece suite
- Three double bedrooms featuring character details and original charm
- Top-floor bedroom showcases exposed beams and wooden flooring
- Westerly facing, low-maintenance rear garden with planted beds





M&B

10 Mount Street

Diss

Diss

Mount Street sits close to the heart of Diss, giving you a straightforward walk to the town's main amenities while still feeling residential and well-established. The nearest major supermarkets are Tesco Superstore and Morrisons, both within a practical distance for day-to-day shopping. Families have good options nearby, including Diss Church of England Junior Academy, Roydon Primary School and Diss High School. Transport links are a strong point, with Diss railway station offering direct services to Norwich, Ipswich and London, and road connections via the A1066 and A140 opening up the wider area. Altogether, Mount Street supports a lifestyle centred on convenience, community and easy access to the town's shops, green spaces and weekly market.



M&B

10 Mount Street

Diss

A beautifully positioned Grade II listed three-bedroom cottage less than 0.2 miles from the centre of Diss, this characterful home sits along Mount Street, one of the town's most admired residential roads. Surrounded by an attractive run of historic properties and within a short walk of the high street, it offers a rare opportunity to enjoy period living in a highly convenient setting.

Believed to date back to the 1700s, the property has been thoughtfully modernised while retaining the features that define its heritage. Two reception rooms provide flexible living space, with the living room centred around a log burner that enhances the cottage's warmth and atmosphere.

The kitchen is equipped with country-style cabinetry, a butler sink, an integrated oven, a hob and space for a fridge/freezer, creating a practical and inviting environment for everyday use.

The ground floor bathroom features a contemporary three-piece suite, including a freestanding bathtub and patterned tiles, along with space for laundry appliances.



10 Mount Street

Diss

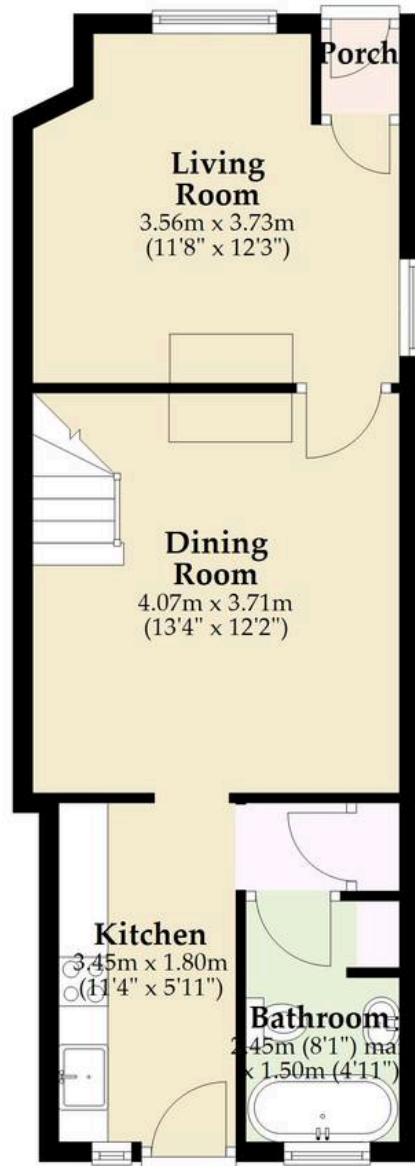
Across the first and second floors, three double bedrooms continue the home's characterful feel, each retaining original features. The first-floor shower room comprises a modern three-piece suite, while the top-floor bedroom is particularly appealing, with exposed beams and wooden flooring adding to its sense of charm.

The rear garden offers a private, low-maintenance outdoor space, enclosed by fencing. A shared pathway serves neighbouring properties, while the garden itself is predominantly paved, with planted beds introducing colour and greenery. A timber storage shed provides useful additional space, and the westerly aspect ensures the patio benefits from afternoon and evening sun.



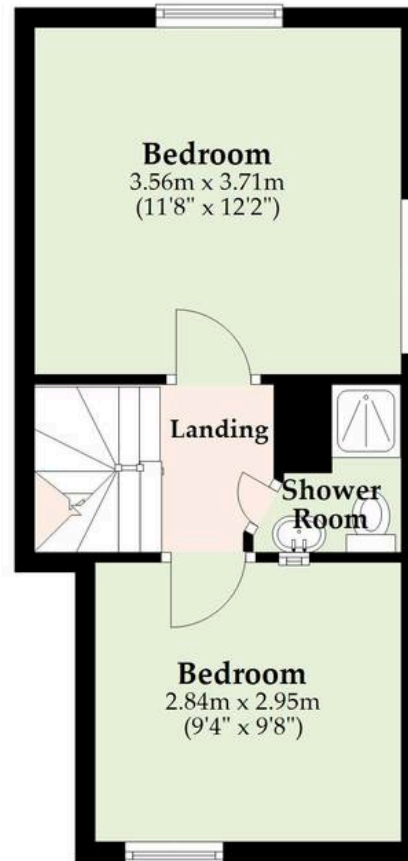
Ground Floor

Approx. 40.5 sq. metres (435.5 sq. feet)



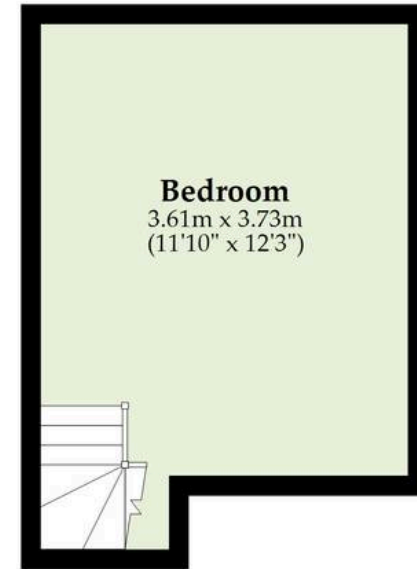
First Floor

Approx. 28.6 sq. metres (308.2 sq. feet)



Second Floor

Approx. 17.8 sq. metres (191.4 sq. feet)



Total area: approx. 86.9 sq. metres (935.1 sq. feet)

Whilst every attempt has been made to ensure the accuracy of the floorplan contained here, measurements of doors, windows, rooms and any other items are approximate and no responsibility is taken for any error, omission or mis-statement. This plan is for illustrative purposes only and should be used as such by any prospective purchaser. The services, systems and appliances shown have not been tested and no guarantee as to their operability or efficiency can be given.

Plan produced using PlanUp.

Dreaming of this home? Let's make it a reality



Meet *Nicola*
Branch Manager



Meet *Theo*
Property Consultant



Meet *Anya*
Aftersales Progressor

Minors & Brady
Your home, our market

 diss@minorsandbrady.co.uk

 01379 771444

 46-47 Mere Street, Diss, IP22 4AG

CAISTER-ON-SEA | DEREHAM | DISS | NORWICH | OULTON BROAD | WROXHAM



How can we support

- ✓ Residential Mortgages
- ✓ Protection & Insurance
- ✓ Buy-to-let (personal and limited company)



Matt Waters
Director and
Principal



Victoria Payne
Mortgage and
Protection Advisor

Offering you quick and professional mortgage advice every step of the way.

T: 01603 210378
E: enquiries@norfolk-mortgages.co.uk