



NO
BALL
GAMES

23

23 Bermuda Holiday Park, Newport Road, Hemsby

Hemsby



Minors & Brady

23 Bermuda Holiday Park, Newport Road

Hemsby

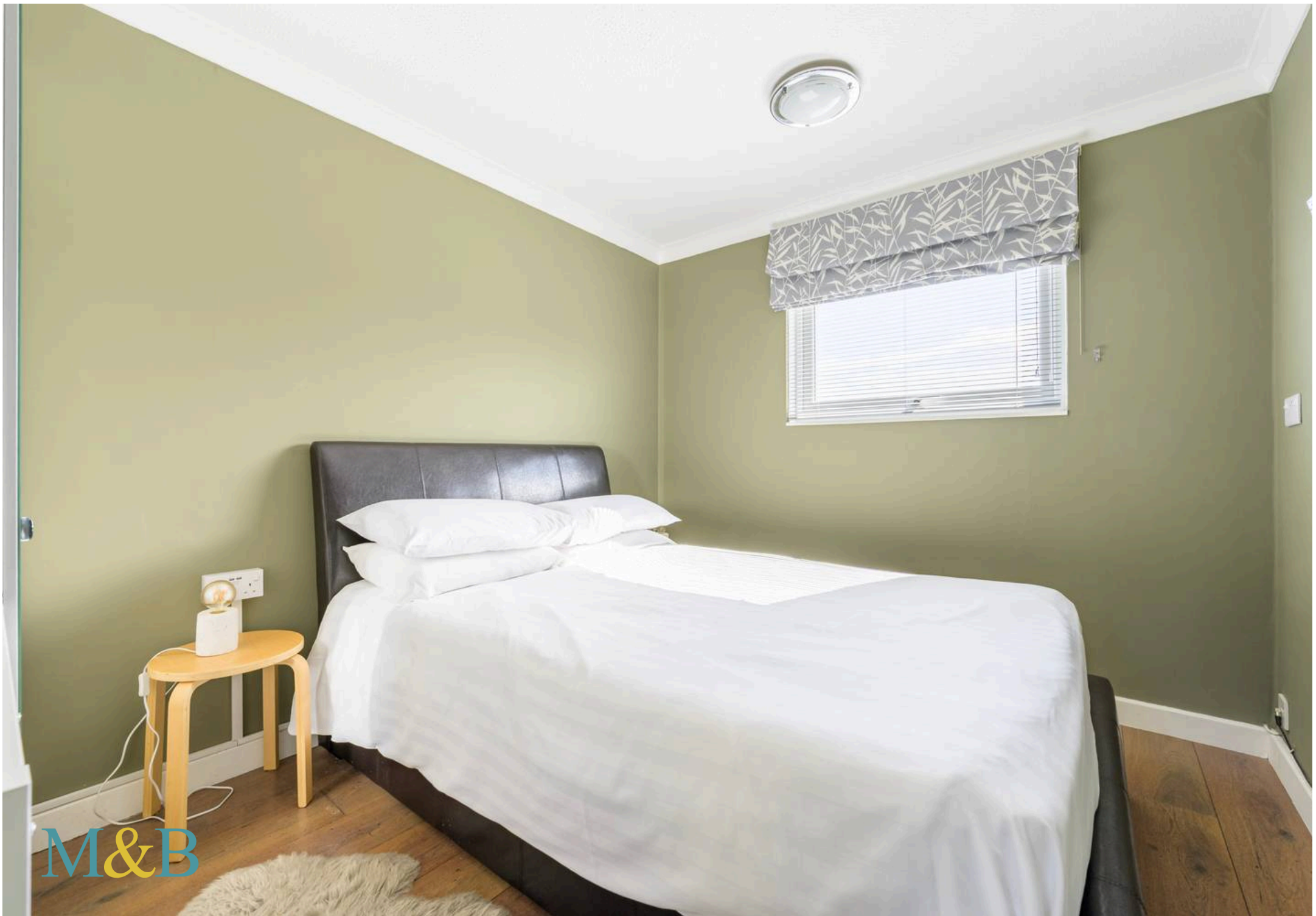
Coastal comfort meets easy-going holiday living, this two-bedroom chalet is all about relaxed escapes by the sea. Set within Bermuda Holiday Park in Hemsby, it provides a practical and welcoming base for weekend breaks or longer stays. The open-plan living space creates a bright and sociable environment, making the most of every inch of space. A modern-style kitchen adds a clean and functional touch, ideal for everyday use. Two bedrooms and a shower room complete the accommodation, keeping things simple and efficient. With a private terrace and access to shared outdoor areas, the property offers a laid-back setting within easy reach of the coast.

- The Location

Bermuda Holiday Park offers a well-rounded selection of on-site facilities designed to support both convenience and enjoyment throughout your stay. Residents can enjoy access to a swimming pool, clubhouse and café, offering relaxed spaces for leisure, socialising and refreshments without needing to leave the park. An arcade and minimart add further practicality, ensuring entertainment and everyday essentials are close at hand.

The park's coastal position places you moments from the beach, with well-kept grounds that enhance the calm, welcoming atmosphere. Its setting makes it an excellent base for exploring nearby seaside towns, nature trails and the broader Norfolk landscape, while still offering all the amenities needed for an effortless holiday experience.





M&B

This attractive two-bedroom chalet sits within the well-known Bermuda Holiday Park in Hemsby, offering an easygoing coastal escape ideal for weekend breaks, family getaways or seasonal use. The development provides a relaxed setting, with shared outdoor areas available for residents to enjoy the wider surroundings.

A private front terrace gives the chalet a welcoming feel, creating a sheltered space for outdoor seating, perfect for relaxing or enjoying the fresh coastal air in warmer months.

Inside, the bright sitting room flows into the kitchen, forming a sociable and open-plan living space that makes the most of the layout. The kitchen features cabinetry with contrasting work surfaces and tiled splashbacks, offering a clean, practical environment with ample storage and space for appliances.

A shower room serves the property, providing a straightforward and functional layout suited to everyday use. Two bedrooms complete the accommodation, each offering space for essential furnishings and storage.

Residents benefit from access to communal outdoor areas, adding to the sense of space and allowing enjoyment of the surrounding environment. With the coast and local attractions within easy reach, this chalet presents a simple, modern and enjoyable retreat by the sea.

Agents Note

This chalet will be sold leasehold with 50 years remaining.

Ground rent: £1,800 paid annually.

Please be advised that the site operates on a seasonal basis and is not open all year. All prospective purchasers must undertake their own due diligence, acknowledge these conditions and confirm that they are satisfied with the occupation and associated arrangements.



M&B

Ground Floor

Approx. 35.2 sq. metres (379.4 sq. feet)



Total area: approx. 35.2 sq. metres (379.4 sq. feet)

Whilst every attempt has been made to ensure the accuracy of the floorplan contained here, measurements of doors, windows, rooms and any other items are approximate and no responsibility is taken for any error, omission or misstatement. This plan is for illustrative purposes only and should be used as such by any prospective purchaser. The services, systems and appliances shown have not been tested and no guarantee as to their operability or efficiency can be given.

Plan produced using PlanUp.

Dreaming of this home? Let's make it a *reality*.



Meet *Sarah*
Senior Property Consultant



Meet *Dan*
Branch Partner



Meet *Lauren*
Property Consultant

Minors & Brady
Your home, our market

 caister@minorsandbrady.co.uk

 01493 806188

 48 High Street, Caister-on-Sea, Great Yarmouth, NR30 5EH

CAISTER-ON-SEA | DEREHAM | DISS | NORWICH | OULTON BROAD | WROXHAM



How can we support

- ✓ Residential Mortgages
- ✓ Protection & Insurance
- ✓ Buy-to-let (personal and limited company)



Matt Waters
Director and
Principal



Victoria Payne
Mortgage and
Protection Advisor

Offering you quick and professional mortgage advice every step of the way.

T: 01603 210378
E: enquiries@norfolk-mortgages.co.uk