



21 Meadow Court Links Road, Gorleston
Great Yarmouth



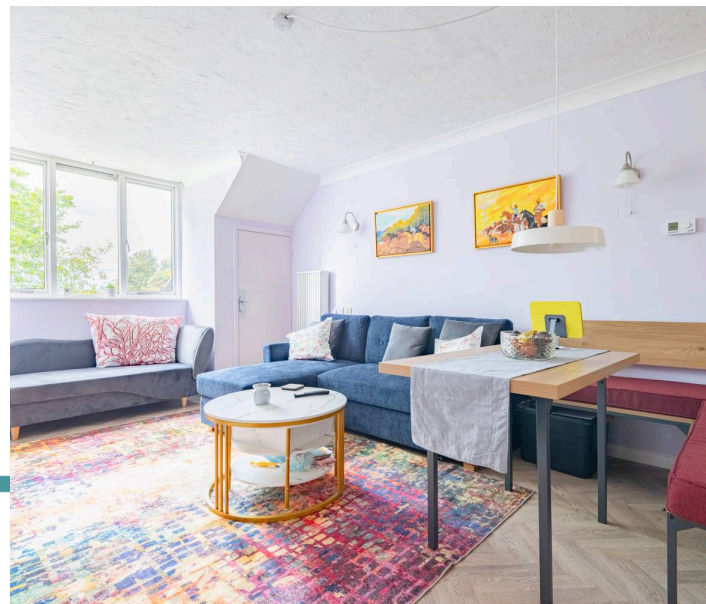
Minors & Brady

21 Meadow Court Links Road

Gorleston, Great Yarmouth

A peaceful first-floor setting and a recently renovated interior make this over-60s apartment an appealing choice for those seeking comfort and convenience close to the coast. It provides a bright open-plan kitchen/living room, a well-proportioned bedroom with fitted storage, and a modern shower room, all complemented by new flooring and updated storage heating. Residents benefit from an on-site warden, communal lounge and gardens, secure entry and a stair lift for easy access. With local amenities, transport links, James Paget Hospital and the beach all within reach, it offers a relaxed and well-supported lifestyle.

- Renovated first-floor apartment, located on a quiet over 60's development in Gorleston
- Bright open-plan kitchen/living room with built-in storage
- Kitchen is fitted with a range of cabinetry, an integrated oven, a ceramic hob and a breakfast bar
- Double bedroom with fitted wardrobe
- Modern shower room arranged for convenience
- New storage heating installed throughout
- On-site warden, communal lounge, laundry and gardens
- Secure entry system and stair lift access to the first floor
- Convenient location close to amenities, transport links, James Paget Hospital and the beach





M&B

21 Meadow Court Links Road

Gorleston, Great Yarmouth

A well-presented first-floor apartment within a respected over-60s development, positioned in a quiet and well-maintained setting close to the coast. Recently renovated with all new flooring and new storage heating, the property provides comfortable, secure and low-maintenance living in a desirable part of Gorleston-on-Sea.

The home features a bright open-plan kitchen/living room, creating a welcoming space for everyday living, with useful built-in storage throughout. The double bedroom includes a fitted wardrobe, while the modern shower room is arranged for convenience. A secure entry system, care alarm and stair lift to the first floor ensure easy access and peace of mind.

Residents enjoy a friendly community atmosphere, supported by an on-site warden, communal lounge, laundry facilities and attractive gardens.

Outside, the site offers communal parking and well-kept grounds, adding to the appeal of this comfortable retirement home.

Agents Notes

Leasehold, with 50 years left on the lease.


Service/maintenance charge: £3,500 p/a.

Ground rent: £100 p/a.

Connected to mains water, electricity and drainage.

Electric storage.

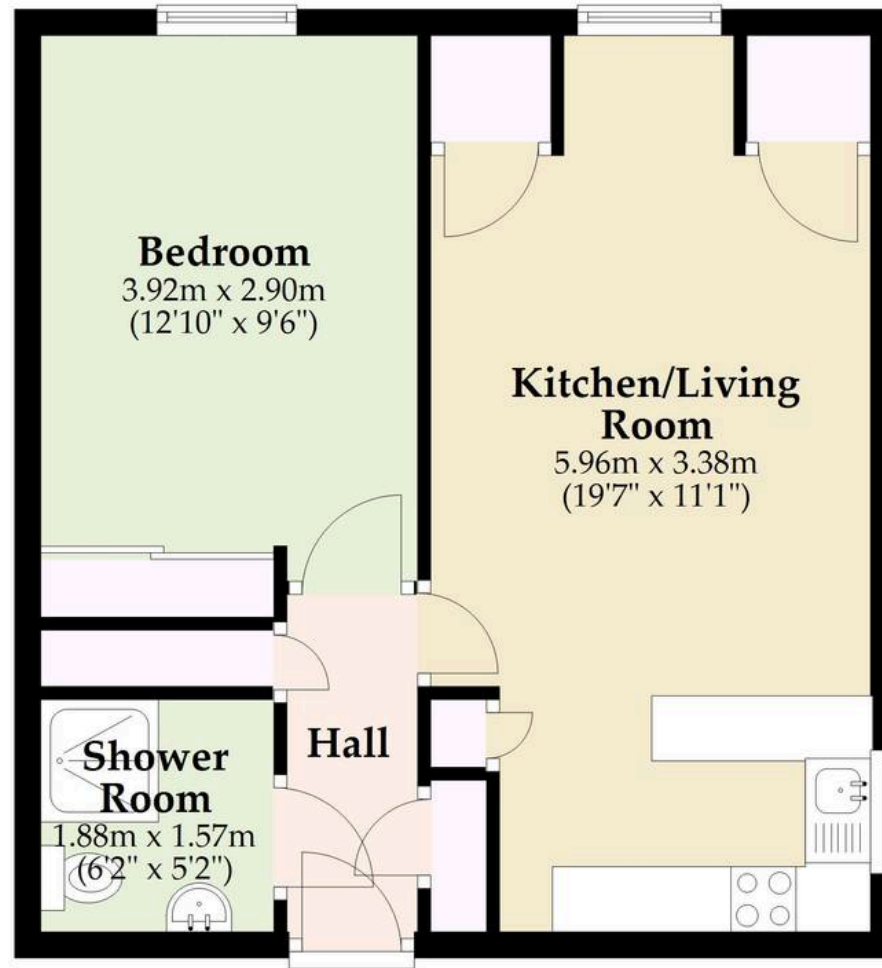


Energy Efficiency Rating		
	Current	Potential
Very energy efficient - lower running costs		
(92+) A		
(81-91) B		
(69-80) C	71	75
(55-68) D		
(39-54) E		
(21-38) F		
(1-20) G		
Not energy efficient - higher running costs		
England, Scotland & Wales		
		EU Directive 2002/91/EC 

M&B

First Floor

Approx. 43.6 sq. metres (469.6 sq. feet)



Total area: approx. 43.6 sq. metres (469.6 sq. feet)

Whilst every attempt has been made to ensure the accuracy of the floorplan contained here, measurements of doors, windows, rooms and any other items are approximate and no responsibility is taken for any error, omission or misstatement. This plan is for illustrative purposes only and should be used as such by any prospective purchaser. The services, systems and appliances shown have not been tested and no guarantee as to their operability or efficiency can be given.

Plan produced using PlanUp.

Dreaming of this home? Let's make it a *reality*.



Meet *Sarah*
Senior Property Consultant



Meet *Dan*
Branch Partner



Meet *Lauren*
Property Consultant

Minors & Brady
Your home, our market

 caister@minorsandbrady.co.uk

 01493 806188

 48 High Street, Caister-on-Sea, Great Yarmouth, NR30 5EH

CAISTER-ON-SEA | DEREHAM | DISS | NORWICH | OULTON BROAD | WROXHAM



How can we support

- ✓ Residential Mortgages
- ✓ Protection & Insurance
- ✓ Buy-to-let (personal and limited company)



Matt Waters
Director and
Principal



Victoria Payne
Mortgage and
Protection Advisor

Offering you quick and professional mortgage advice every step of the way.

T: 01603 210378
E: enquiries@norfolk-mortgages.co.uk