



The Cottage The Street, Sea Palling

Norwich

Minors & Brady



Guide Price £1,100 pcm
Minors & Brady

The Cottage The Street

Sea Palling, Norwich

This charming period cottage offers character and comfort throughout, combining traditional features with thoughtful modern updates. Boasting three good-sized double bedrooms, the property provides a cosy and inviting atmosphere ideal for both permanent living and holiday use. Packed with original features, including exposed wooden beams and a rustic fireplace, further enhanced by a log-burning stove installed in 2024. The home has been carefully maintained and improved, with damp proofing work completed in 2025 and recently replaced flooring, adding a fresh and practical finish throughout. Situated in a popular seaside town, just a short walk from the beach, the property offers a peaceful coastal lifestyle. Outside, you'll find a compact patio garden, designed for low-maintenance enjoyment, alongside a covered parking area providing convenient off-road parking.

- Charming period cottage full of character
- Located in a popular seaside town just a short walk to the beach
- Three good-sized double bedrooms
- Cosy lounge with log-burning stove (installed 2024)
- Original features including exposed beams and fireplace
- Enclosed, low-maintenance compact patio garden
- Recently replaced flooring (carpet & LVT throughout)
- Well-equipped kitchen with skylight
- Covered parking area providing convenient off-road parking



M&B



Minors & Brady



M&B

Minors & Brady

The Cottage The Street

Sea Palling, Norwich

Location

Sea Palling is a well-regarded and popular seaside village on the North Norfolk coast, known for its sandy beaches and relaxed coastal charm. The beach itself is recognised for being sheltered by offshore reefs, creating calmer waters that are often appreciated by visitors and residents alike.

The village provides essential amenities including a local shop, café, and pub, supporting day-to-day living while maintaining a quiet, community-focused feel. For a wider range of facilities, larger towns such as Stalham and North Walsham are within easy driving distance, offering supermarkets, schools, healthcare services, and transport links.

Sea Palling is also well-positioned for those who enjoy the outdoors. The surrounding area offers access to scenic coastal walks, countryside routes, and nearby connections to the Norfolk Broads National Park. This makes it an appealing location for walkers, nature enthusiasts, and those simply looking to enjoy a slower pace of life by the sea.

The Street, Sea Palling

Enter through the porch into the dining room, a bright and welcoming space perfect for enjoying meals with family and friends.

From here, step into the cosy lounge, where large windows bring in natural light, and the combination of a rustic fireplace and recently installed log-burning stove (2024) creates a warm and inviting focal point.

The kitchen is well-equipped with modern appliances set within traditional cabinetry. A skylight enhances the space with additional natural light, and a door leads directly to the rear garden, offering easy access to outdoor dining and relaxation.



M&B

The Cottage The Street

Sea Palling, Norwich

A conservatory provides an additional versatile living area, ideal as a reading space, garden room, or informal sitting area overlooking the outside space.

A family bathroom on this floor includes both a bath and a shower, providing convenience and comfort.

The house features three good-sized double bedrooms, offering plenty of space for relaxation. One of the bedrooms benefits from a wardrobe with sliding doors, providing practical storage.

Outside, the enclosed rear garden has been designed for ease of maintenance, featuring a compact patio garden layout with paved areas and synthetic grass, ideal for relaxing or entertaining without extensive upkeep.

To the front/side, the property benefits from a covered parking area, ensuring sheltered and convenient off-road parking, adding to its overall practicality and appeal.

Agents Note

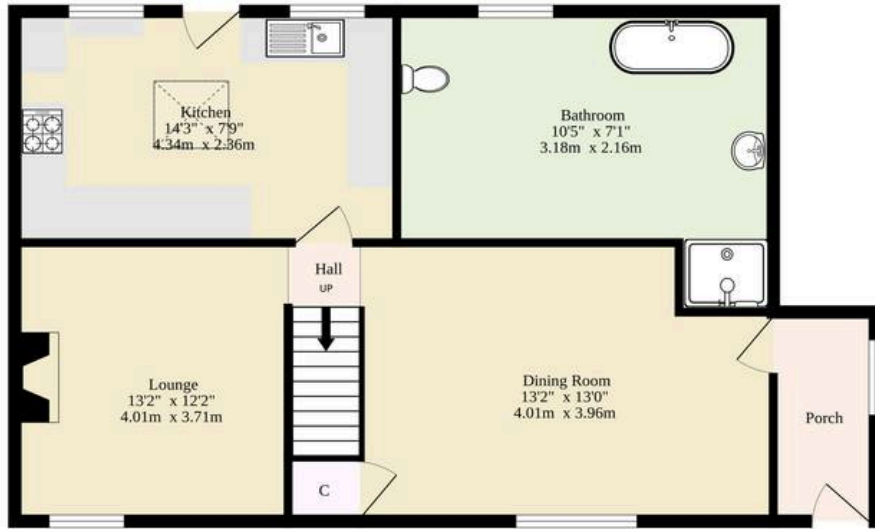
This property will be sold freehold.

Connected to mains water, electricity, gas and drainage.

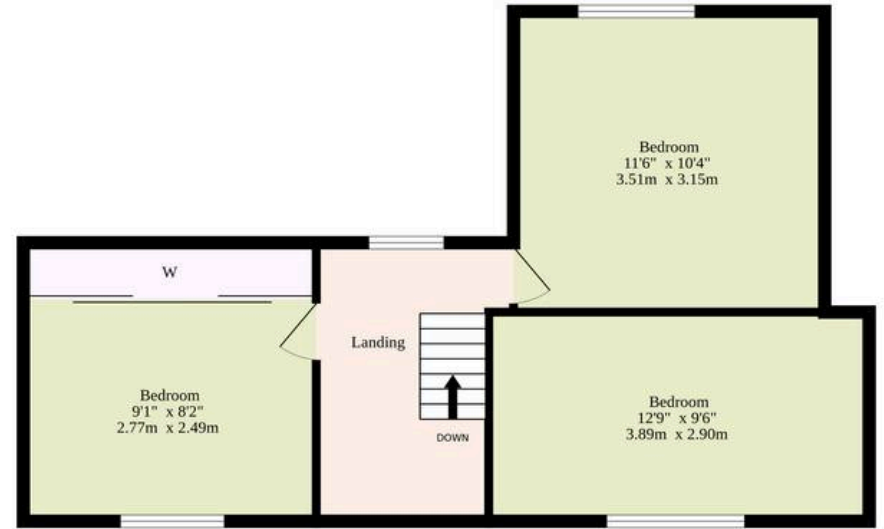


M&B

Ground Floor
585 sq.ft. (54.3 sq.m.) approx.



1st Floor
432 sq.ft. (40.1 sq.m.) approx.



TOTAL FLOOR AREA : 1017 sq.ft. (94.5 sq.m.) approx.

Whilst every attempt has been made to ensure the accuracy of the floorplan contained here, measurements of doors, windows, rooms and any other items are approximate and no responsibility is taken for any error, omission or mis-statement. This plan is for illustrative purposes only and should be used as such by any prospective purchaser. The services, systems and appliances shown have not been tested and no guarantee as to their operability or efficiency can be given.
Made with Metropix ©2025

Dreaming of this home? Let's make it a *reality*.



Meet *Abi*
Branch Partner



Meet *Karol*
Property Lister



Meet *Claire*
Aftersales Team Leader

Minors & Brady
Your home, our market



wroxham@minorsandbrady.co.uk



01603 783088



6 Church Road, Wroxham, Norwich, NR12 8UG

CAISTER-ON-SEA | DEREHAM | DISS | NORWICH | OULTON BROAD | WROXHAM



How can we support

- ✓ Residential Mortgages
- ✓ Protection & Insurance
- ✓ Buy-to-let (personal and limited company)



Matt Waters
Director and
Principal



Victoria Payne
Mortgage and
Protection Advisor

Offering you quick and professional mortgage advice every step of the way.

T: 01603 210378
E: enquiries@norfolk-mortgages.co.uk